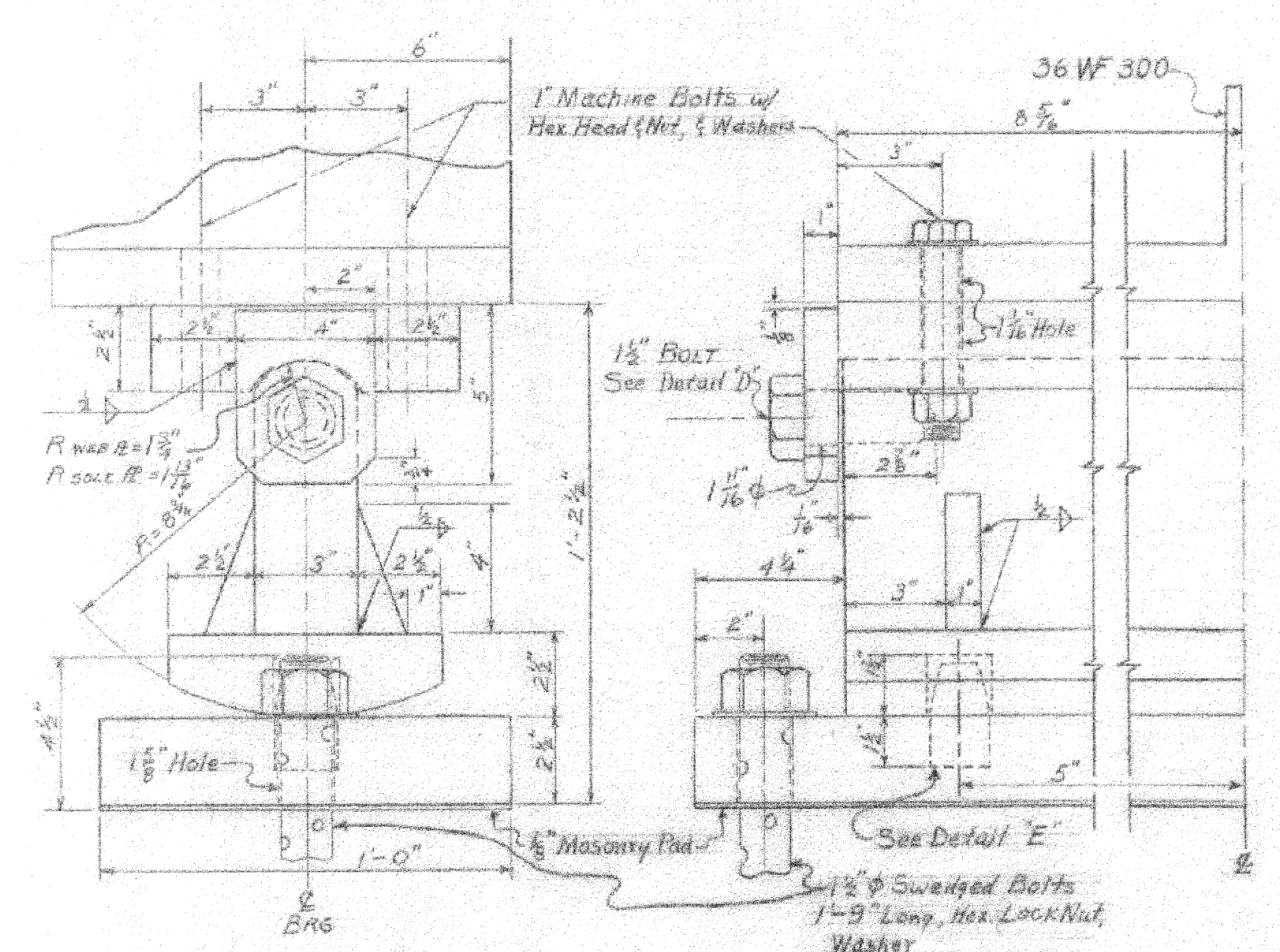
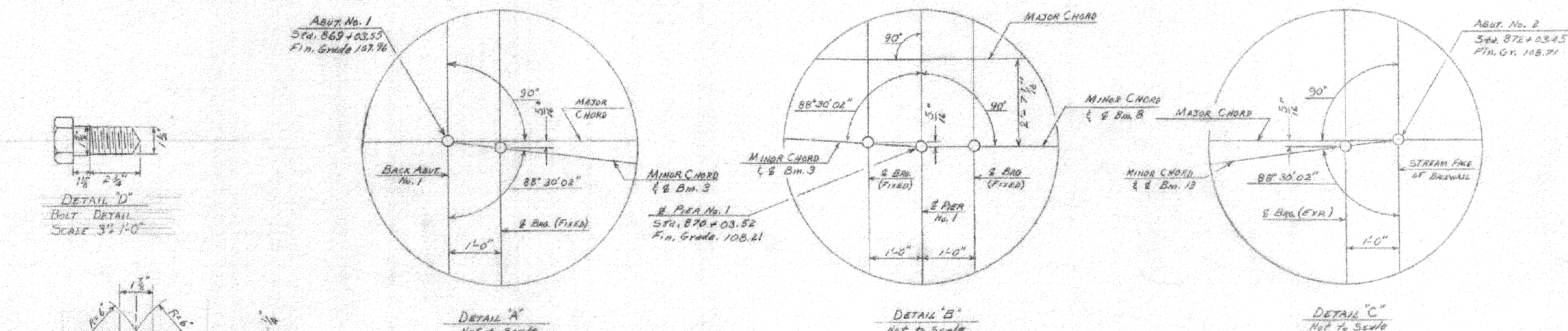


FRAMING PLAN  
SCALE 3/8" = 1'-0"



EXPANSION BEARING  
SCALE 3\"/>

REVISIONS  
① CHANGED 312-C TO 312-A  
5-27-65 RFB



DETAIL "D"  
BOLT DETAIL  
SCALE 3/4\"/>
  
 DETAIL "E"  
PINTLE DETAIL  
SCALE 3\"/>

NOTES

- For detail shear connectors see SCB-30-60 & SCB-D-60
- All diaphragms to be 18x4 L1427 with interior diaphragms perpendicular to the beams of each span. Diaphragms at the piers as per std. sat. SCB-D-60, end of abutment No. 2 as per sheet "EXPANSION END DETAILS". Interior diaphragms as per std. sat. SB-20-60.
- The center beam in each span is at the minor chord of that span. All beams in each span are parallel.
- Expansion bearing to be installed in such a position that web will be in a vertical position at a stand temperature of 40°F. See note #2 of "EXPANSION END DETAILS" sheet.
- EI datum sea level based on nearest U.S. Government Vertical Control.
- Cross slope of approach slab to conform with the cross slope of bridge.
- All dimensions given at 68°F.

SUPERSTRUCTURE QUANTITIES

ITEM NO.	ITEM	UNIT	NET	OVERRUN	TOTAL	FINAL
106-A	CHAN. EXCAV. OF EARTH	C.Y.				
106-B	CHAN. EXCAV. OF ROCK	C.Y.				
106-C	UNCLASS. CHAN. EXCAV.	C.Y.				
107	STRUCT. EXCAV.	C.Y.				
401-B	CONC. CLASS B (MOD.)	C.Y.	321			
402	REINF. STEEL	LBS.	See Reinforcing Schedule			
407	ASPHALTIC-ASB. COATING	S.Y.				
502-B	TREATED TIMBER PILING	L.F.				
503	SPLICES FOR STEEL PILING	EA.				
504	STEEL PILING	L.F.				
312A	JOINT SEALER - HOT POURED ①	L.F.	150		STAGE II	
318	TAR EMULSION FOR BRIDGE FLOORS	GAL.	400		STAGE II	
361-B	BIT. CONCRETE TREATMENT	TONS	111		STAGE II	
403	SPIRAL REINFORCEMENT (7650°)	L.S.	1			
504A	STRUCTURAL STEEL	LBS.	697,230			
551-C	GRANITE BRIDGE CURB (MOD.)	L.F.	591			
572	BRIDGE RAILING	L.F.	365			

ST. ALBANS - HIGHGATE  
IM BPNT(4)  
SHEET 32 OF 32  
BRIDGE 100N&S  
FOR REFERENCE ONLY

STATE OF VERMONT  
DEPARTMENT OF HIGHWAYS

TOWN OF SWANTON-HIGHGATE  
ROUTE No. 189 LOG STA. 870+50  
FRAMING PLAN & EXP. BRGS.  
ROCK RIVER  
SCALE As NOTED  
SURVEYED BY  
DRAWN BY RLM CHECKED BY NBT  
PROJECT No. 189-3(7) COVERLET 3  
SHEET 73 OF 143  
HIGHGATE STAGE II PROJECT No. 1-59-3 (24)  
SHEET 81 OF 127