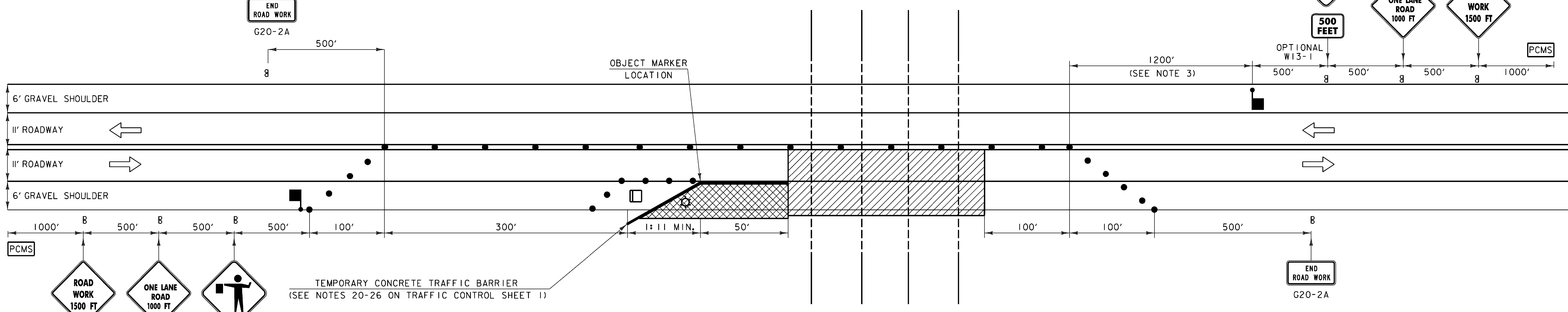


TRAFFIC CONTROL FOR VT 78 UNDER BRIDGE 98
WITH DAYTIME TWO WAY TRAFFIC AND TEMPORARY CONCRETE TRAFFIC BARRIER
 (EASTBOUND CLOSURE SHOWN, WESTBOUND CLOSURE MIRRORED)



TRAFFIC CONTROL FOR WOOD HILL ROAD UNDER BRIDGE 94
WITH DAYTIME ONE WAY ALTERNATING TRAFFIC AND TEMPORARY CONCRETE TRAFFIC BARRIER
 (EASTBOUND CLOSURE SHOWN, WESTBOUND CLOSURE MIRRORED)

- LEGEND**
- FLOW OF TRAFFIC
 - RETROREFLECTIVE PLASTIC DRUM
 - PORTABLE ARROW BOARD
 - TYPE III BARRICADE
 - LIGHTING
 - WORK AREA
 - TRUCK/TRAILER MOUNTED ATTENUATOR
 - PORTABLE CHANGEABLE MESSAGE SIGN (SEE NOTE 15 ON TRAFFIC CONTROL SHEET 1)
 - FLAGPERSON
 - CONSTRUCTION STAGING/ STORAGE AREA (SEE NOTE 25 ON TRAFFIC CONTROL SHEET 1)

- TRAFFIC CONTROL NOTES:**
1. SEE THE TRAFFIC CONTROL NOTES ON TRAFFIC CONTROL SHEET 1 FOR ADDITIONAL NOTES AND APPROACH SIGNING FOR THE LEFT LANE CLOSURE.
 2. SEE THE CONCRETE MEDIAN BARRIER NOTES ON TRAFFIC CONTROL SHEET 1 FOR ADDITIONAL NOTES FOR LANE CLOSURES.
 3. DUE TO THE LARGE AMOUNT OF TRUCK TRAFFIC AND THE STEEP DOWNGRADE AT BRIDGE 94, THE WESTBOUND FLAGPERSON NEEDS TO BE POSITIONED AT THE CREST OF THE HILL, APPROXIMATELY 1200' WEST OF BRIDGE 94 NB.

PROJECT NAME: ST. ALBANS - HIGHGATE
 PROJECT NUMBER: IM BPNT(4)
 FILE NAME: TCP BR 98.dgn PLOT DATE: 8/17/2009
 PROJECT LEADER: JPB DRAWN BY: NCF/JJB
 DESIGNED BY: JJB CHECKED BY: DH
TRAFFIC CONTROL SHEET 5 SHEET 10 OF 32