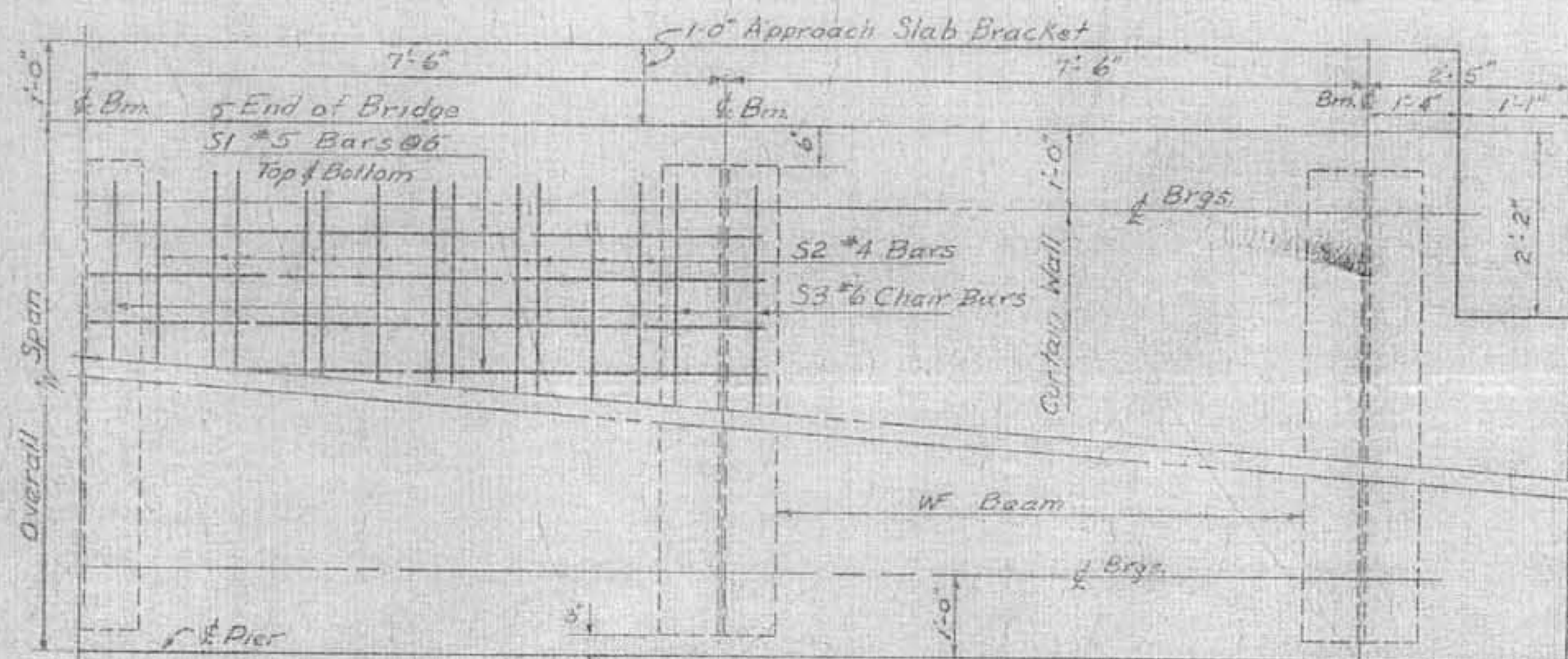
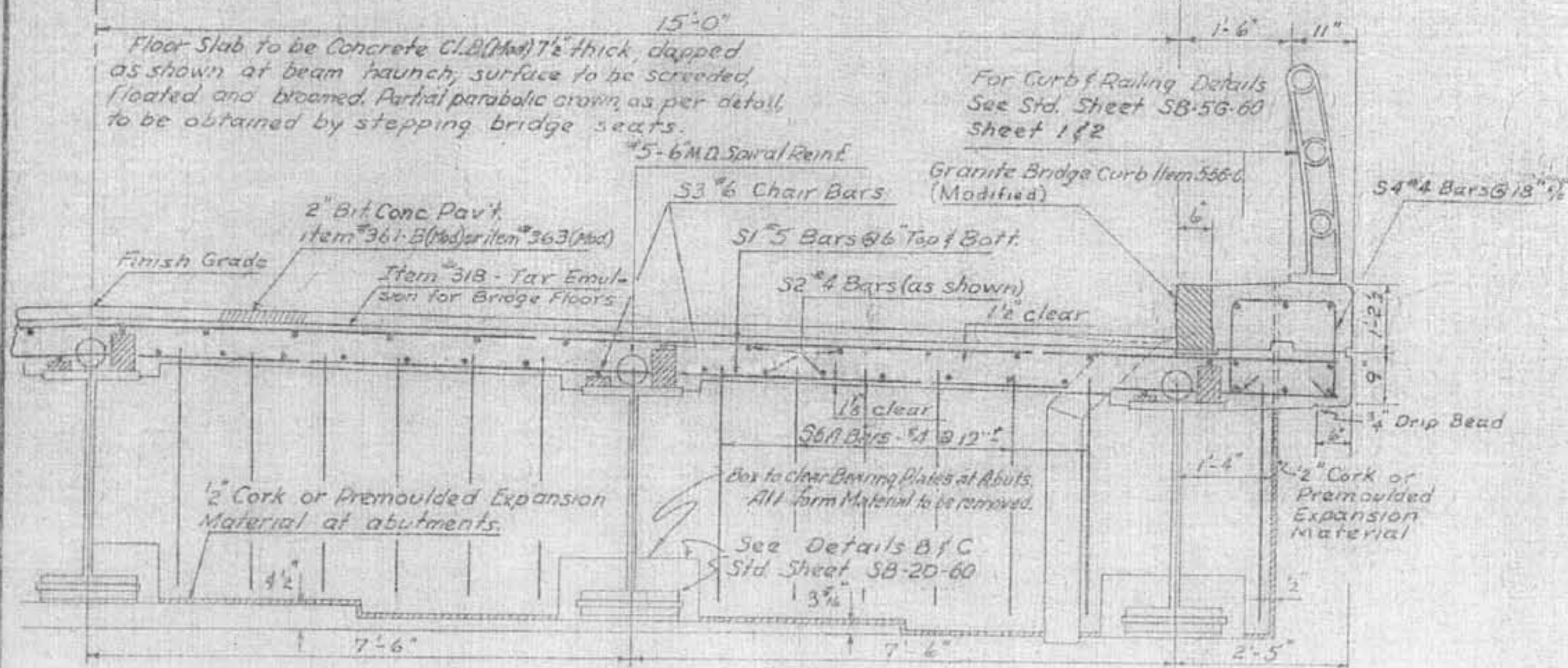


DETAIL OF PARTIAL PARABOLIC GROWN OF SLAB



HALF PLAN



TYPICAL HALF SECTION

Revisions & Corrections
Changed to 12" curb 9/7/60

Drawn By: R.S.H. June 1960
Traced By: R.S.H. June 1960
Checked By: R.T.B. & R.S.H. July 1960
Correct: 13 July 1960
Approved: 13 July 1960
Chief Engineer

TYPICAL SECTION, PLAN VIEW, & QUANTITIES
30 FOOT ROADWAY W/ BEAM BRIDGES

34-44 NON COMPOSITE, 49-99 COMPOSITE
FOR ADDITIONAL DETAILS SEE STANDARD SCB-D-60

TABLE OF QUANTITIES FOR SINGLE (SQUARE) SPAN

Span, Out to Out	99-0	94-0	89-0	84-0	79-0	74-0	69-0	64-0	59-0	54-0	49-0	44-0	39-0	34-0
Span E to E Brigs.	97-0	92-0	87-0	82-0	77-0	72-0	67-0	62-0	57-0	52-0	47-0	42-0	37-0	32-0
Length of Bms	98-0	93-0	88-0	83-0	78-0	73-0	68-0	63-0	58-0	53-0	48-0	43-0	38-0	33-0
Size W/ Beam	36WF300	36WF300	36WF300	36WF245	36WF174	36WF170	36WF160	36WF150	36WF150	36WF150	36WF150	36WF150	36WF150	36WF116
Lght. f. Size Bot Cover It.	63" x 12"	59" x 11"	55" x 11"	51" x 11"	47" x 11"	43" x 11"	39" x 11"	35" x 11"	31" x 11"	27" x 11"	23" x 11"	19" x 11"	15" x 11"	11" x 11"
Dead load Deflection	3"	2 1/2"	2 1/8"	2 1/4"	1 7/8"	1 1/2"	1 1/4"	1"	7/8"	5/8"	1/2"	3/8"	1/4"	1/4"
Dia of Spiral Bars														
Mean Dia. of Spiral														Non Composite
Spiral Pitch 0'-10" from Brng.	Double @ 5 1/2"	Double @ 5 1/2"	Double @ 6"	Double @ 5 1/2"	Double @ 5"	Double @ 5"	Double @ 5"	Double @ 5"	Double @ 5"	Double @ 5"	Double @ 5 1/2"	Double @ 5 1/2"	Double @ 5 1/2"	Double @ 5 1/2"
" 10'-20" or E Span	Double @ 6 1/2"	Double @ 6 1/2"	Double @ 7"	Double @ 6 1/2"	Double @ 6"	Double @ 6 1/2"	Double @ 6 1/2"	Double @ 6 1/2"	Double @ 6 1/2"	Double @ 7"	Double @ 7 1/2"	Double @ 7 1/2"	Double @ 7 1/2"	Double @ 7 1/2"
" 20'-30" or E Span	4 1/2"	4"	4 1/2"	4"	4 1/2"	4 1/2"	4 1/2"	4 1/2"	5"	5 1/2"	6"	6 1/2"	6 1/2"	6 1/2"
" 30'-40" or E Span	5 1/2"	5 1/2"	5 1/2"	5 1/2"	6"	6"	7"	7 1/2"	7 1/2"	7 1/2"	7 1/2"	7 1/2"	7 1/2"	7 1/2"
" 40'-E Span	7"	7"	8"	8"	8"	8"	8"	8"	8"	8"	8"	8"	8"	8"
Length of #5 Studs (Attends to Span)	7"	7"	8"	8"	8"	8"	8"	8"	8"	8"	8"	8"	8"	8"
(2 Studs required per pitch, 62" long unless otherwise specified on the plans)														
Tot. Struct. Steel (1 span) (lbs)	192,860	169,900	156,410	123,370	99,000	82,950	69,500	59,080	52,070	46,560	41,610	37,780	28,150	22,190
Reinforcing Bars - S1	376	376	356	336	316	296	276	256	236	216	196	176	156	136
" - S2	192	192	192	192	192	192	192	128	128	128	128	128	128	64
" - S3	30	30	30	30	30	30	30	20	20	20	20	20	20	10
" - S4	128	120	112	108	100	92	88	80	74	68	60	54	48	40
" - S5	16	16	16	16	16	16	16	16	16	16	16	16	16	16
" - S6A	52	52	52	52	52	52	52	52	52	52	52	52	52	52
" - S7	44	44	44	44	44	44	44	44	44	44	44	44	44	44
Tot. Weight - Reinf. Bars (lbs)	21,570	20,530	19,520	18,480	17,450	16,440	15,400	14,220	13,190	12,170	11,140	10,120	9,070	7,900
Approx. Wt. Spiral Reinf. (lbs)	2,550	2,520	2,280	2,370	2,320	2,190	2,070	1,960	1,690	1,550	1,430	1,300	1,170	1,040
Tot. Cu Yds. Conc. Class #1 (Mod) (Yds)	116	111	106	101	95	90	85	79	73	68	63	58	51	45
Tot. Wt. Return Conc. Plast. (Mod) (Tons)	42	40	38	36	34	32	29	27	25	23	21	19	17	15
or Emulsion for Bridge Floors (Gals)	132	125	119	112	105	99	92	85	79	72	65	59	52	45
Approx. Quantity #5 Studs	3000	2900	2600	2700	2700	2500	2400	2250	1990	1810	1660	1510	1360	1210

REINFORCING STEEL SCHEDULE

Span	S1-#5 Str.	S2-#4 Str.	S3-#6 Str.	S4-#4 Str.	S5-#5 Str.	S6A-#4 Str.
34	95'-6"	33'-6"	2'-6"	6'-6"	T.L. = 5'-3"	T.L. Varies
39	20'-3"	20'-6"	2'-9"	7'-0"	B = 1'-6"	A = 5" G = 5"
44	22'-9"	23'-0"	3'-0"	7'-6"	D = 1'-6"	A G
49	25'-3"	25'-6"	3'-0"	7'-6"	C = 1'-5"	H = 3' E
54	27'-9"	28'-0"	3'-0"	7'-6"	H = 3'	B D
59	30'-3"	30'-6"	3'-0"	7'-6"		
64	32'-9"	33'-0"	3'-0"	7'-6"		
69	24'-3"	24'-6"	3'-2"	7'-10"	A = 5" G = 5"	C = 8"
74	26'-0"	26'-3"	3'-2"	7'-10"		
79	27'-6"	28'-0"	3'-3"	8'-0"	S7-#6	S6P-#5
84	29'-3"	29'-6"	3'-3"	8'-0"	T.L. = 3'-0"	T.L. = 4'-2"
89	31'-0"	31'-3"	3'-3"	8'-0"	B = 1'-8"	B = 2'-6"
94	32'-6"	33'-0"	3'-4"	8'-2"	J = 6"	C = 8"
99	34'-3"	34'-6"	3'-4"	8'-2"	A = 8" G = 8"	D = 1'-0"

RICHMOND
IM BPNT (3)
SHEET 13 OF 18
ALL BRIDGES
FOR REFERENCE ONLY

DEPARTMENT OF HIGHWAYS
STANDARD STRUCTURES

SCB-30-60

VOID
Reprinted
for photographing
July 1962