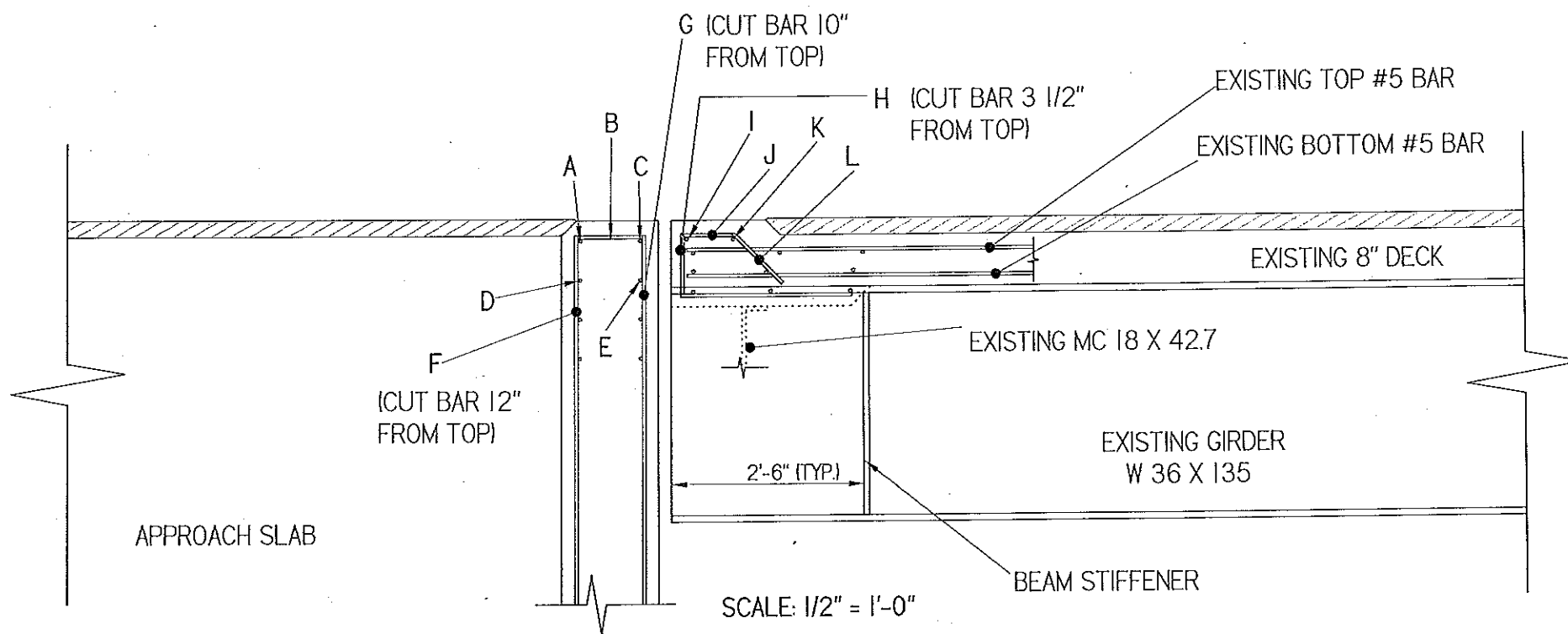


STEEL TO BE REMOVED

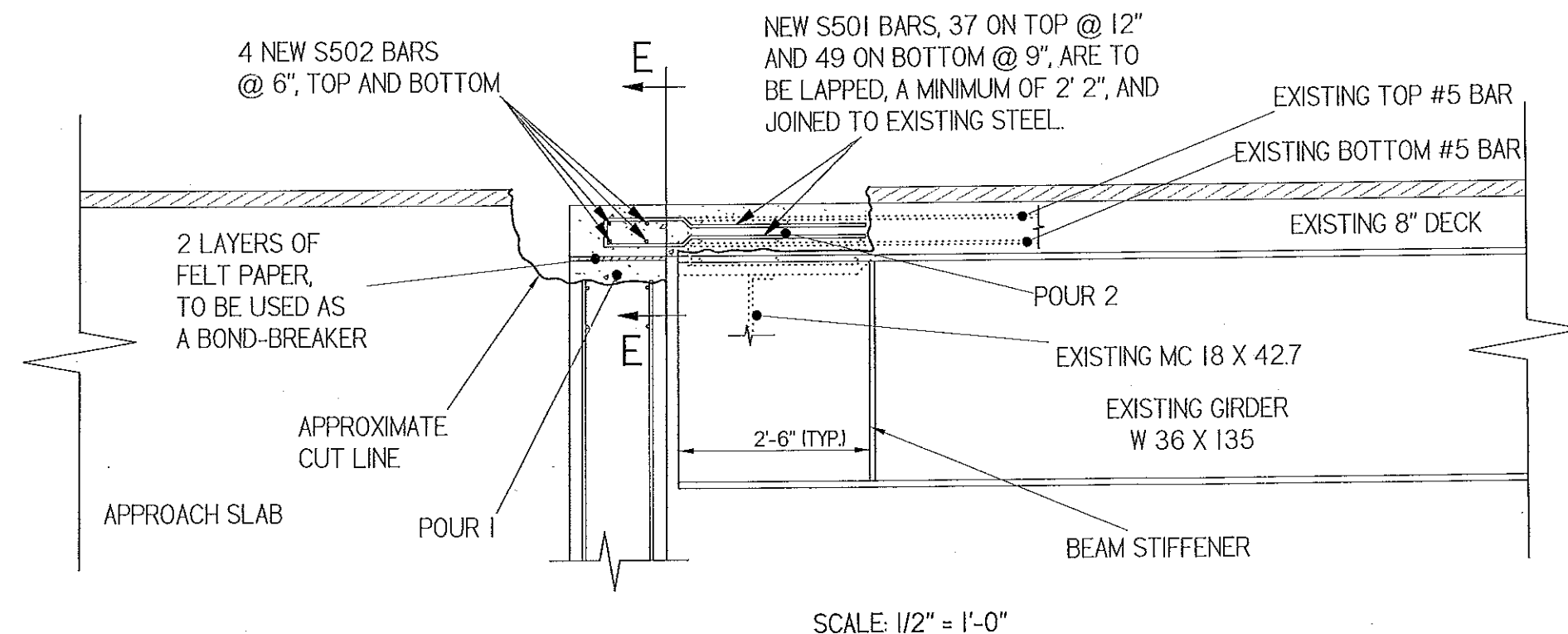


NOTES:

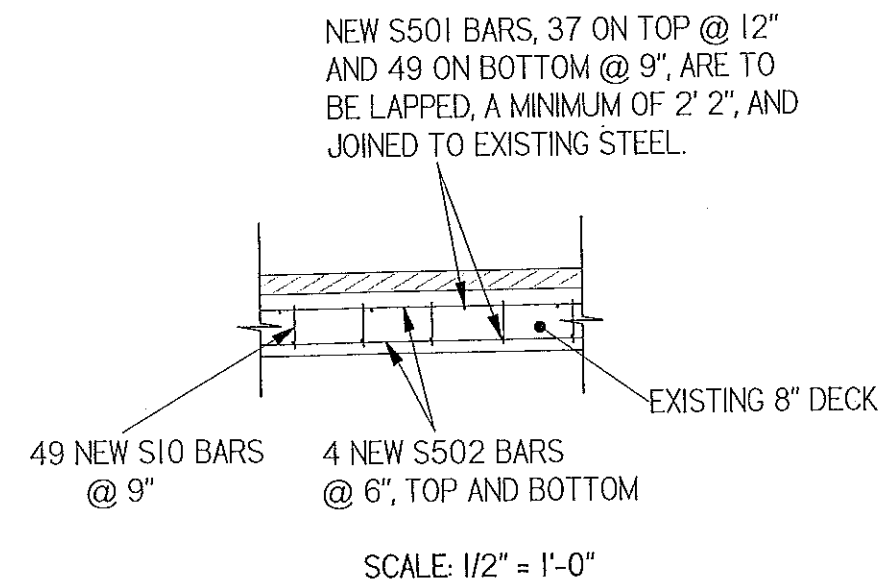
BARS TO BE REMOVED ARE A, B, C, D, E, F, G (SEE NOTES IN DIAGRAM FOR BARS F, G AND H), I, J, K, AND L.

NEW BARS ARE TO BE LAPPED, A MINIMUM, OF 2' 2".

NEW STEEL TO BE ADDED



E-E



BARNET, I-91, BR 74N  
REINFORCING STEEL

DESIGNED/DRAWN BY: DWH  
CHECKED BY:

SHEET 4 OF 7