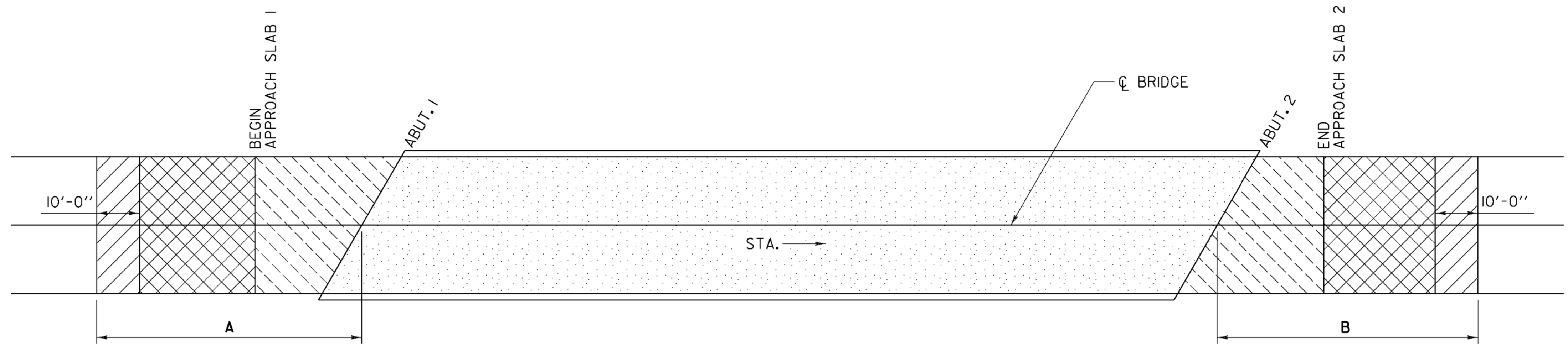


BRIDGE NO.	A(FT)	B(FT)
59S	80.0	80.0
60S	100.0	<del>60.0</del> 100.0
64N	60.0	60.0
64S	80.0	<del>60.0</del> 80.0
67N	80.0	80.0
69N	60.0	80.0



- COLD PLANE - 1 1/4"
- COLD PLANE - 2 1/2"
- COLD PLANE - 2 1/2" ON BRIDGE 69N.  
REMOVE BIT. CONC. PAV'T - TO TOP OF THE APPROACH SLABS FOR BRIDGES 59S, 60S, 64N, 64S, AND 67N.
- REMOVE BIT. CONC. PAV'T - TO THE TOP OF THE CONCRETE BRIDGE DECK AND REMOVE THE BARRIER MEMBRANE.

**NOTE:**

1. COLD PLANE WILL BE PAID FOR UNDER 210.I0.
2. REMOVAL OF THE BIT. CONC. PAV'T. WILL BE PAID FOR UNDER ITEM 529.I0
3. REMOVAL OF THE BARRIER MEMBRANE WILL BE PAID FOR UNDER ITEM 580.I6.

**BITUMINOUS CONCRETE REMOVAL & REPLACEMENT PLAN**

NOT TO SCALE

COLD PLANED +175' BETWEEN BRIDGES 59S & 60S TO ELIMINATE (2) PAVING JOINTS (1 1/4" DEPTH). EL TO EL TO RETAIN RUMBLE STRIPS.

PROJECT NAME: BRADFORD - RYEGATE  
PROJECT NUMBER: IM MEMB(16)

FILE NAME: 08-Conc Remov Plan.dgn PLOT DATE: 2/25/2009  
PROJECT LEADER: JPB DRAWN BY: MWS  
DESIGNED BY: SRB CHECKED BY: JPB  
**BITUMINOUS CONCRETE REMOVAL PLAN** SHEET 7 OF 61