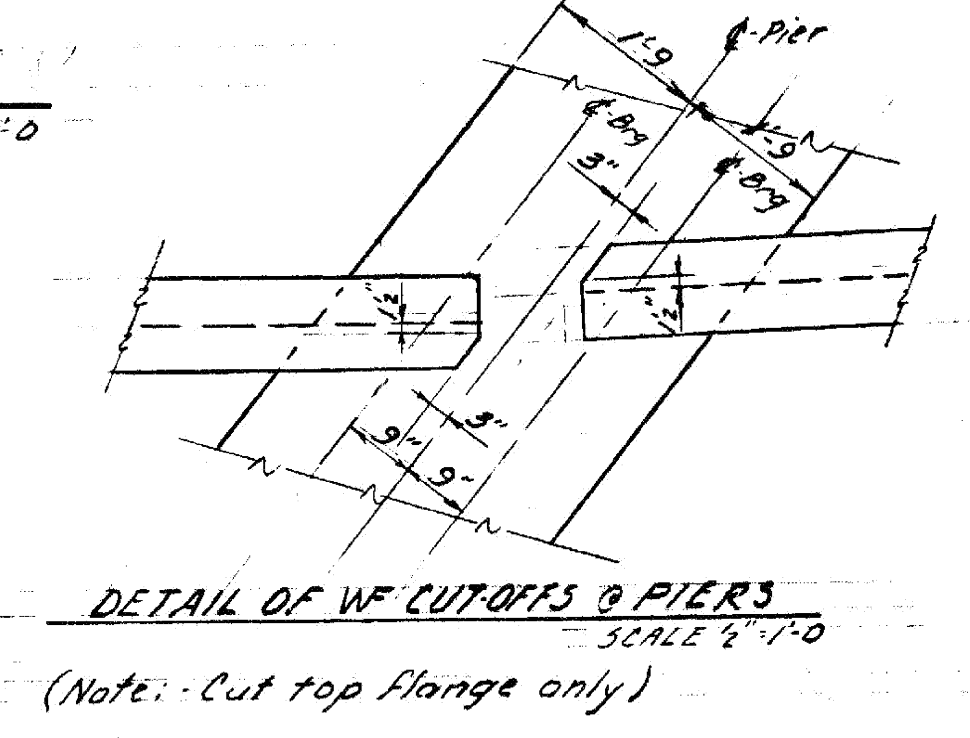
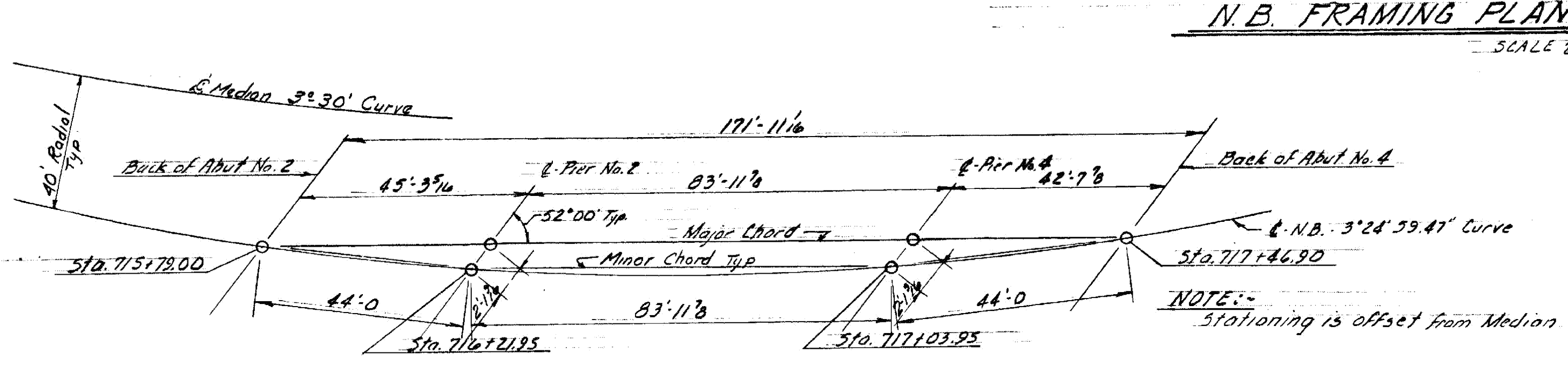


CAMBER
 44' Span: 1"
 84' Span: 3"



For Superstructure Notes See B.R. 306

HARTFORD-SHARON
 IM MEMB(15)
 SHEET 47 OF 47
 BRIDGE 15N&S
 FOR REFERENCE ONLY

STATE OF VERMONT
 DEPARTMENT OF HIGHWAYS

PROJECT HARTFORD-SHARON
 TOWN OF SHARON
 ROUTE NO. 1-B3 STA. 717+0
 1-B3 OVER VT #132
 N.B. SUPERSTRUCTURE
 SCALE As shown

IN CHARGE R. Oatley
 DRAWN BY R. Oatley CHECKED BY W. Toop 11/65
 PROJECT NO. 1-22-112
 SHEET 47 OF 47 BR 307