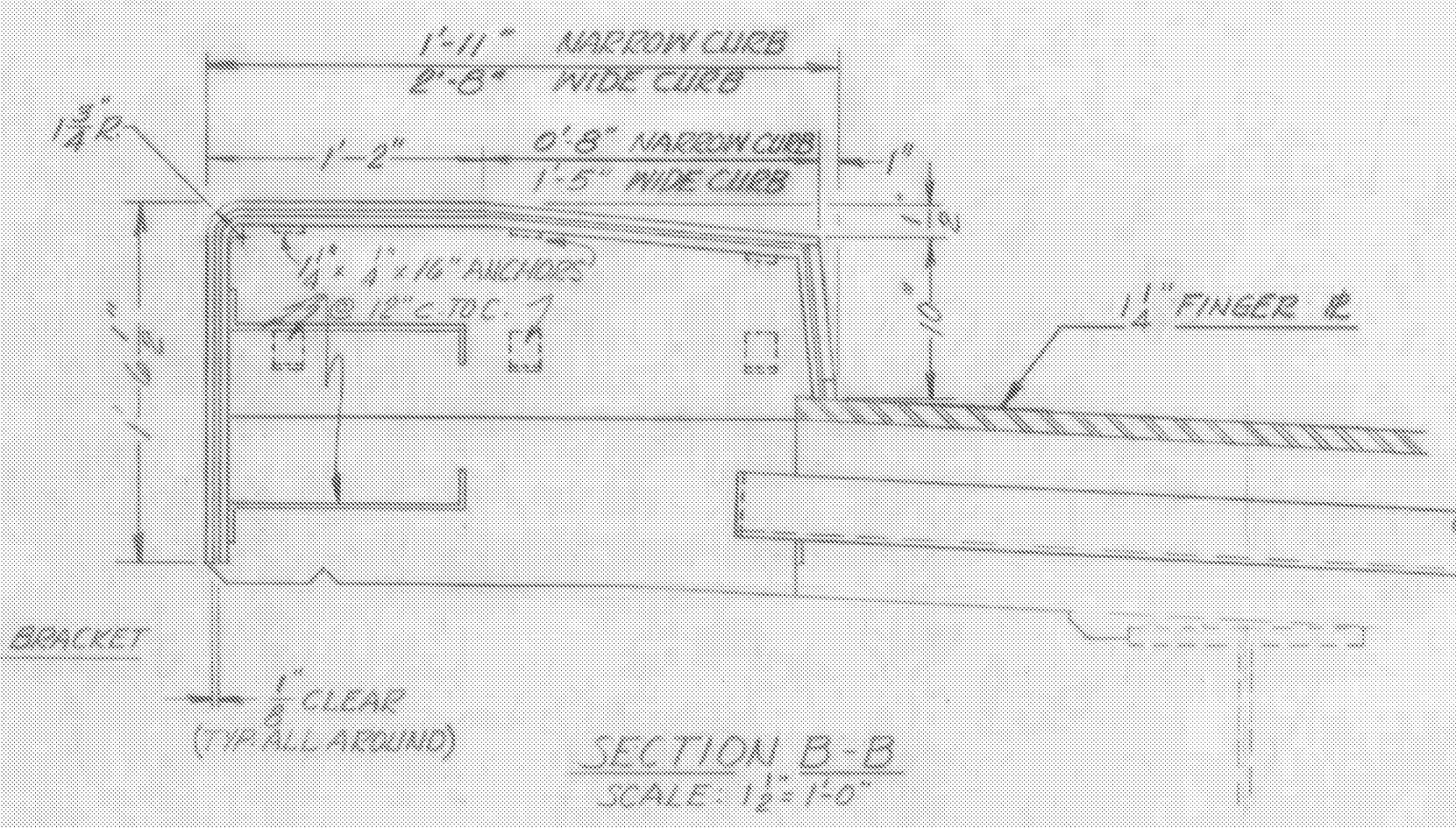
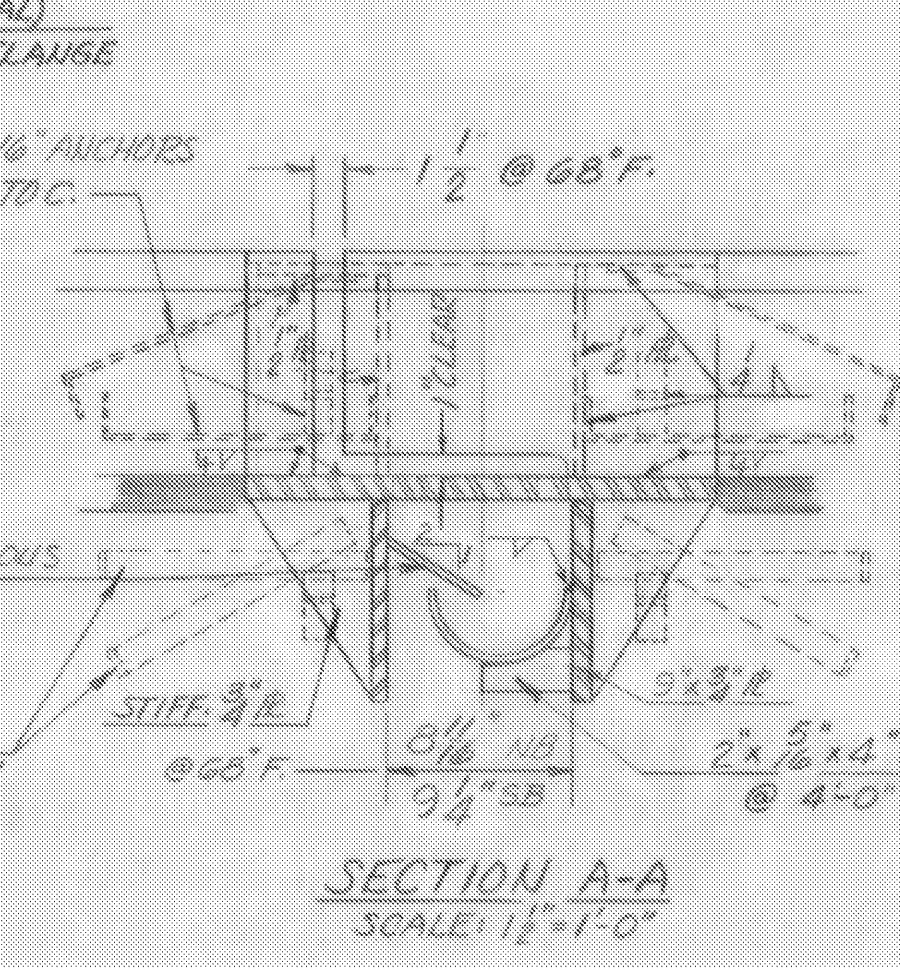
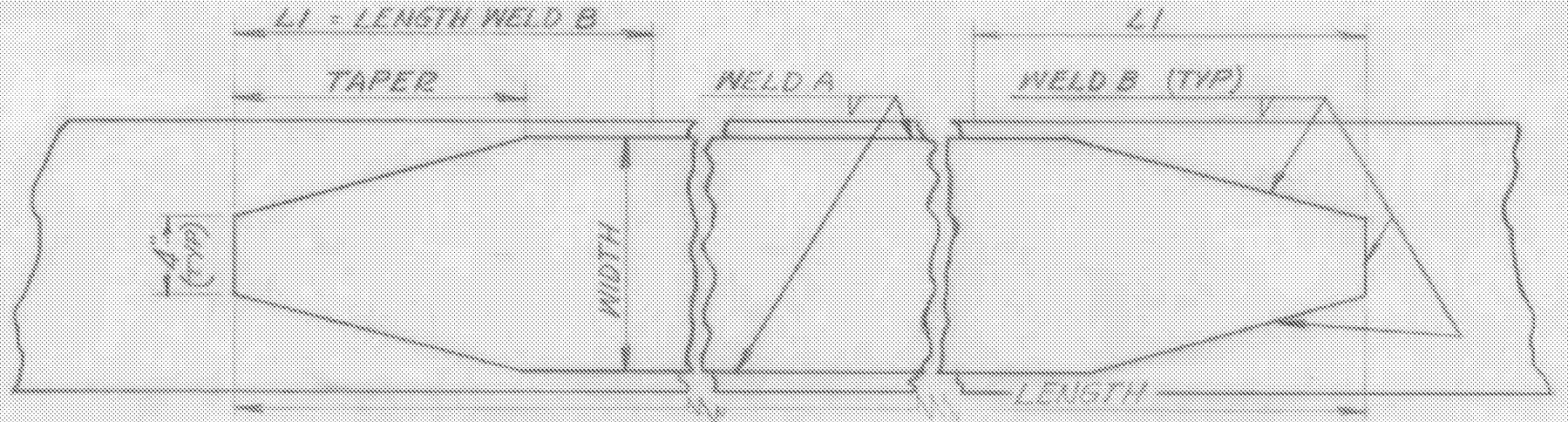


NOTE: IF WROUGHT IRON IS UNAVAILABLE FOR TROUGH ASSEMBLY, A-242 MAY BE SUBSTITUTED ~

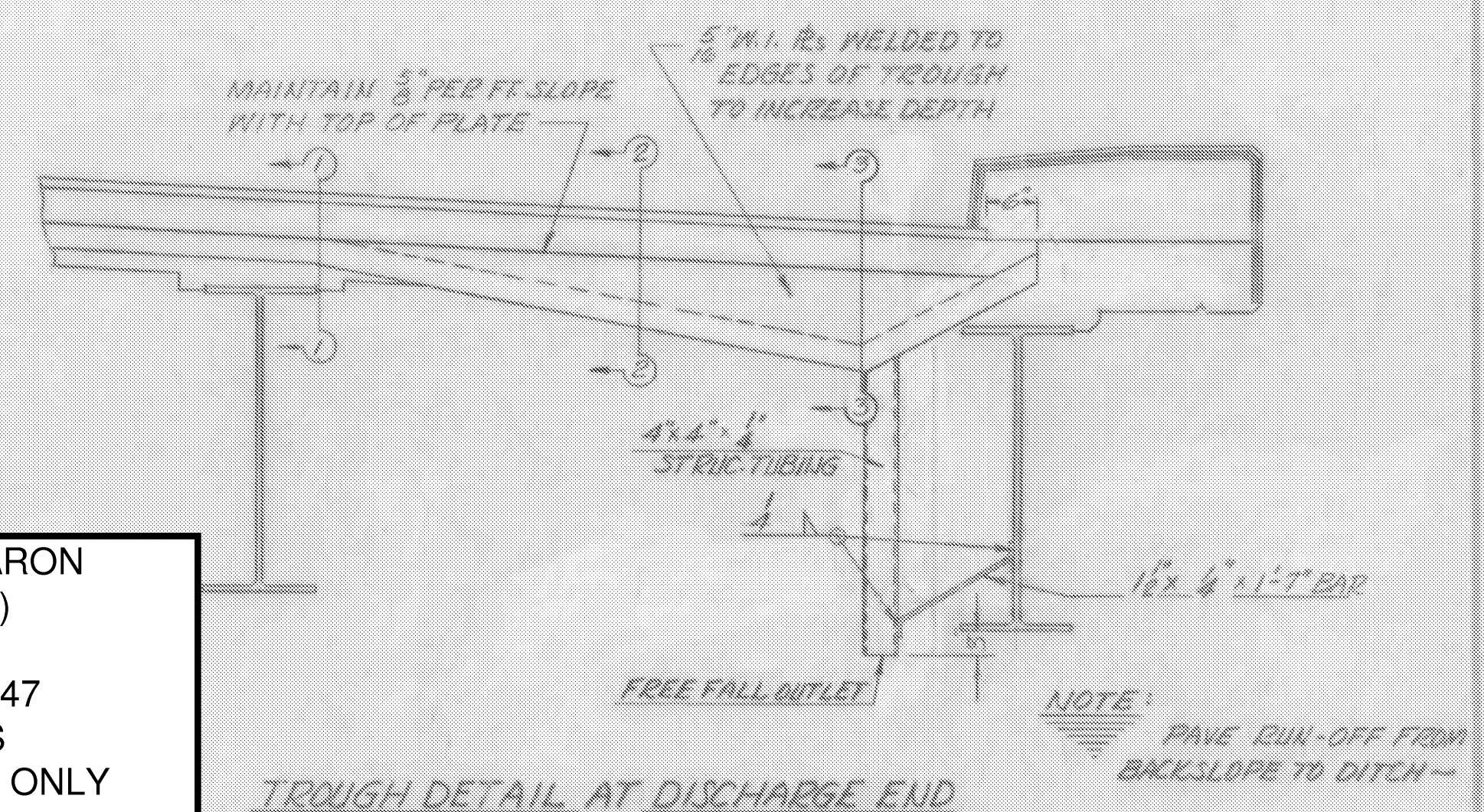
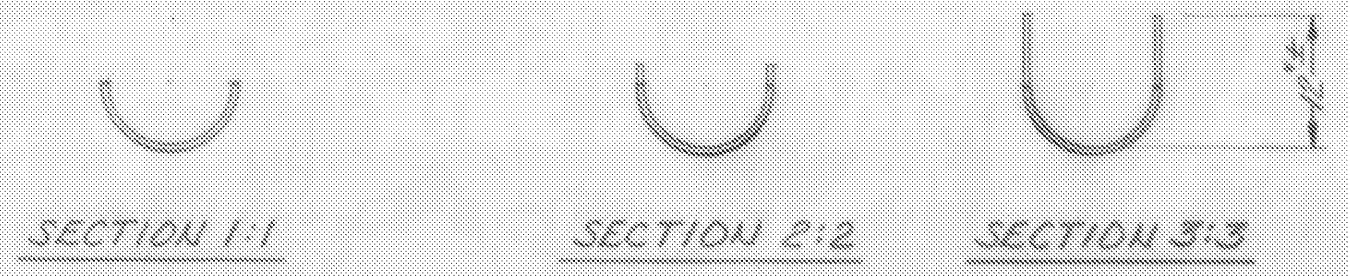


PARTIAL PLAN OF CURB & FINGER IRs AT EXPANSION JOINT
SCALE: 1/2" = 1'-0"

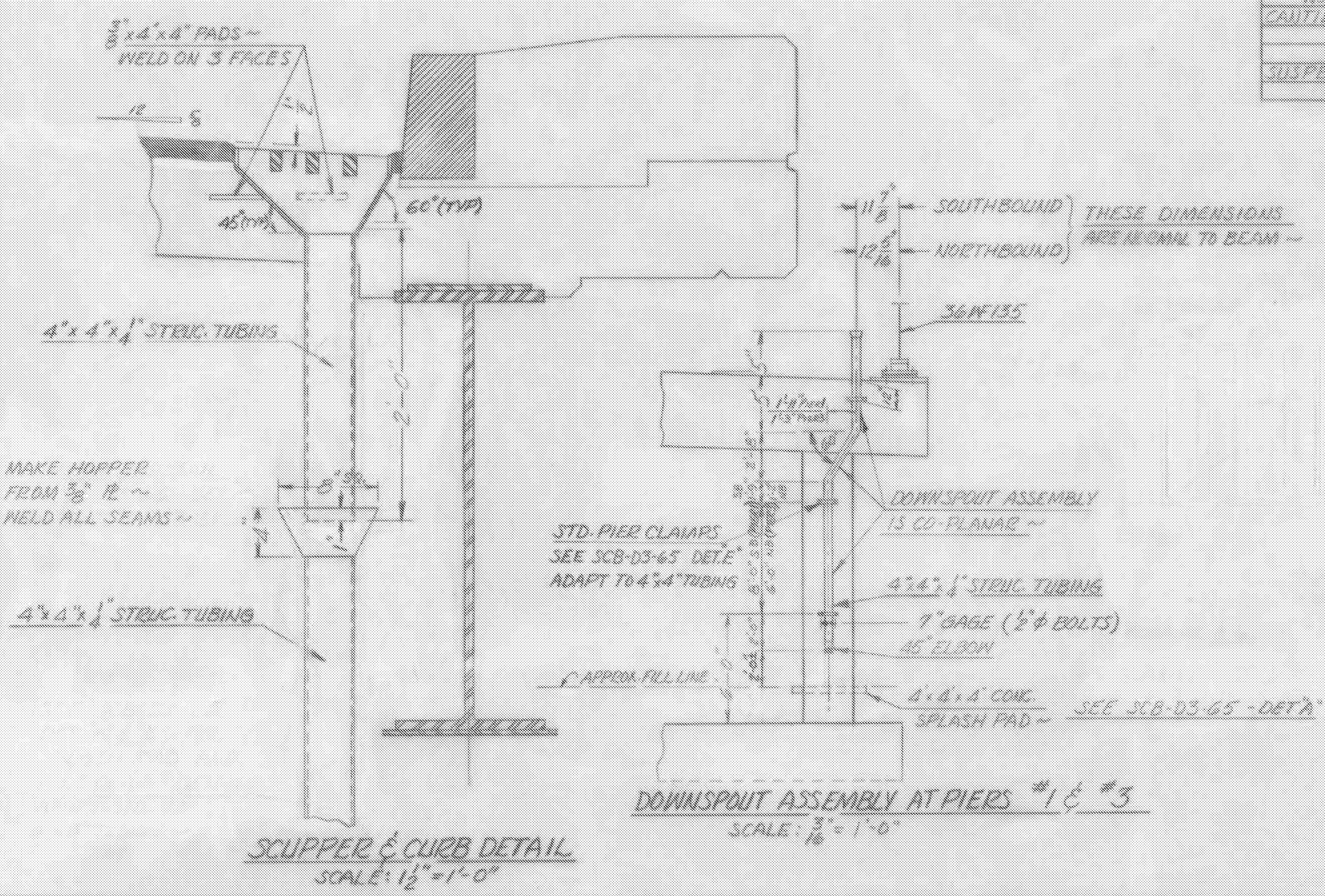


	SOUTHBOUND	CANTILEVER SPAN	TOP FLANGE	BOT FLANGE	SUSPENDED SPAN	TOP FLANGE	BOT FLANGE	SUSPENDED SPAN	TOP FLANGE	BOT FLANGE	SUSPENDED SPAN	TOP FLANGE	BOT FLANGE	SUSPENDED SPAN	TOP FLANGE	BOT FLANGE	SUSPENDED SPAN
COVER PLATE WIDTH	17'-2 1/2"	17'-2 1/2"	53'-1"	17'-2 1/2"	17'-2 1/2"	53'-1"	17'-2 1/2"	17'-2 1/2"	53'-1"	17'-2 1/2"	17'-2 1/2"	53'-1"	17'-2 1/2"	17'-2 1/2"	53'-1"	17'-2 1/2"	17'-2 1/2"
THICKNESS	10"	10"	10"	13"	10"	10"	13"	10"	10"	10"	13"	10"	10"	10"	10"	13"	10"
TAPER	1/2"	1/2"	1/2"	1/2"	1/2"	1/2"	1/2"	1/2"	1/2"	1/2"	1/2"	1/2"	1/2"	1/2"	1/2"	1/2"	1/2"
WELD A	3/16"	3/16"	3/16"	3/16"	3/16"	3/16"	3/16"	3/16"	3/16"	3/16"	3/16"	3/16"	3/16"	3/16"	3/16"	3/16"	3/16"
WELD B	3/16"	3/16"	3/16"	3/16"	3/16"	3/16"	3/16"	3/16"	3/16"	3/16"	3/16"	3/16"	3/16"	3/16"	3/16"	3/16"	3/16"
L1	1'-0 1/2"	1'-0 1/2"	2'-0"	1'-9 1/2"	1'-9 1/2"	2'-0"	1'-9 1/2"	1'-9 1/2"	2'-0"	1'-9 1/2"	1'-9 1/2"	2'-0"	1'-9 1/2"	1'-9 1/2"	2'-0"	1'-9 1/2"	1'-9 1/2"

COVER PLATE DETAILS

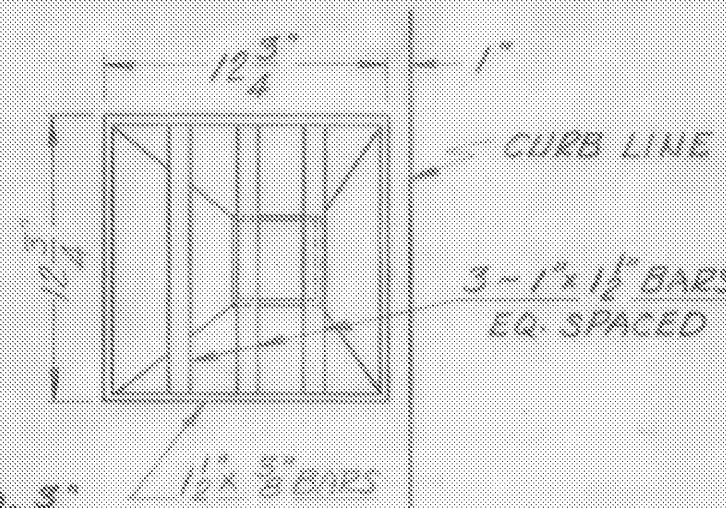


TROUGH DETAIL AT DISCHARGE END
SCALE: 3/4" = 1'-0"



SCUPPER & CURB DETAIL
SCALE: 1/2" = 1'-0"

DOWNSPOUT ASSEMBLY AT PIERS #1 & #3
SCALE: 3/16" = 1'-0"



PLAN OF SCUPPER
SCALE: 1/2" = 1'-0"

HARTFORD-SHARON
IM MEMB(15)

SHEET 33 OF 47
BRIDGE 43S
FOR REFERENCE ONLY

ITEM NO.	ITEM	UNIT	NET	TOTAL	FINAL
	CHAN. EXCAV. OF EARTH	C.Y.			
	CHAN. EXCAV. OF ROCK	C.Y.			
	UNCLASS. CHAN. EXCAV.	C.Y.			
	STRUCT. EXCAV.	C.Y.			
	CONC. CLASS AA (MOD.)	C.Y.			
	CONC. CLASS B (MOD.)	C.Y.			
	REINF. STEEL	LBS.			
	ASPHALTIC ASD COATING	S.Y.			
	TREATED TIMBER PILING	L.F.			
	SPLICES FOR STEEL PILING	EA.			
	STEEL PILING	L.F.			
	UNTREATED TIMBER PILING	L.F.			

STATE OF VERMONT
DEPARTMENT OF HIGHWAYS

TOWN OF HARTFORD URBAN - SOUTH
ROUTE NO. 191 Log STA.
CURB, SCUPPER & TROUGH DETAILS
191 OVER US 5
SCALE AS SHOWN
SURVEYED BY _____
DRAWN BY EHW CHECKED BY EFP
PROJECT NO. I91-2(2)
SHEET 36 OF 219