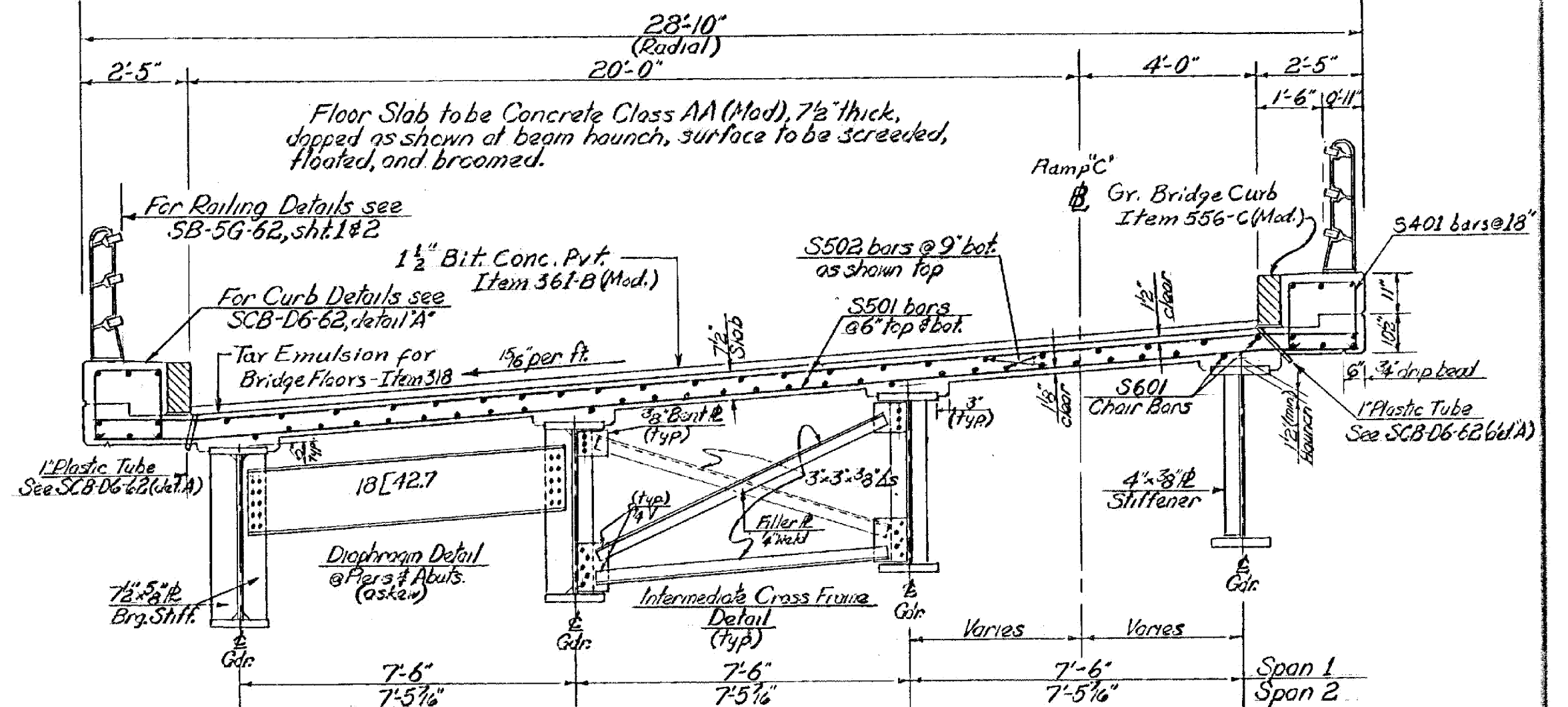
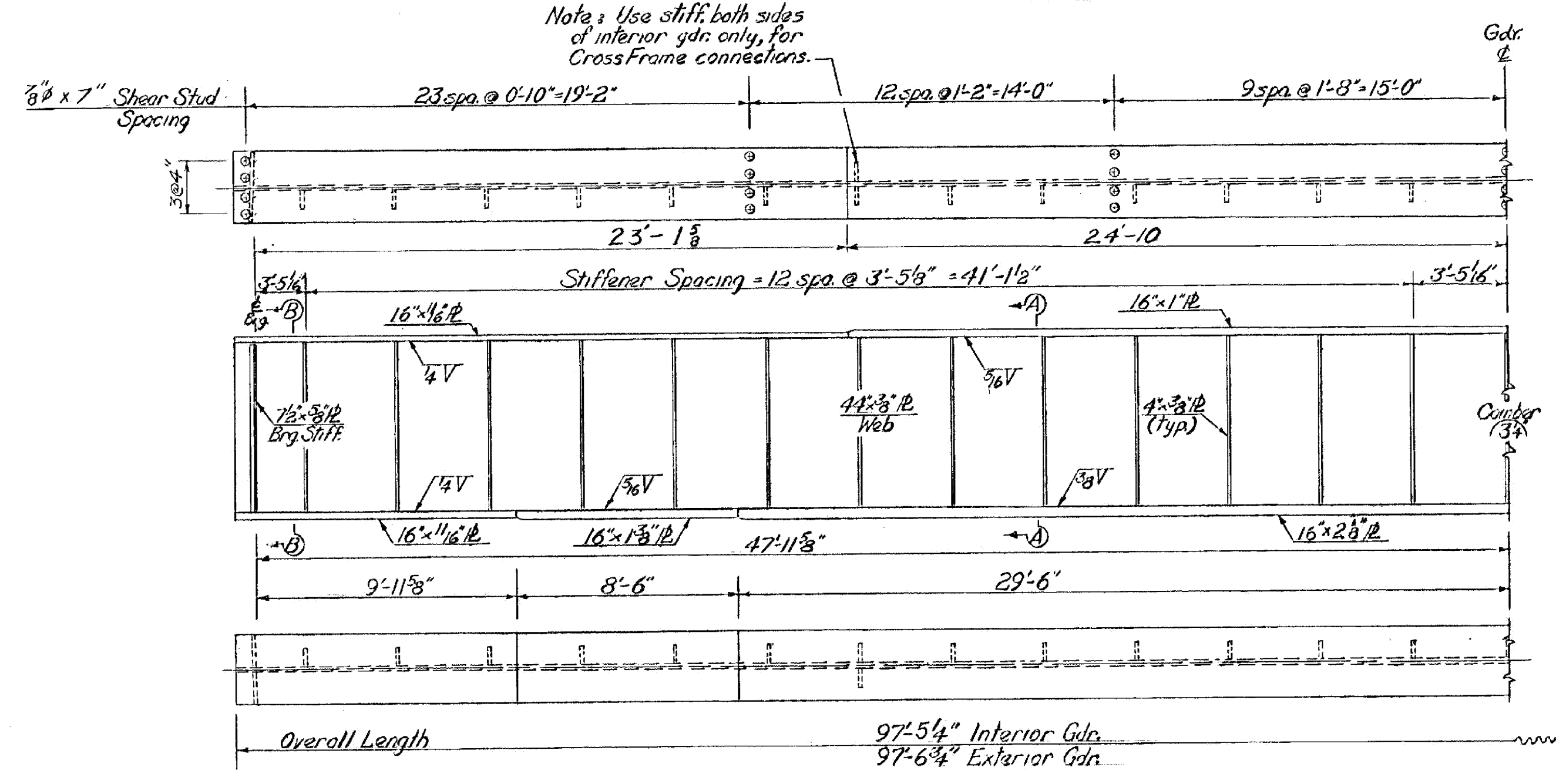


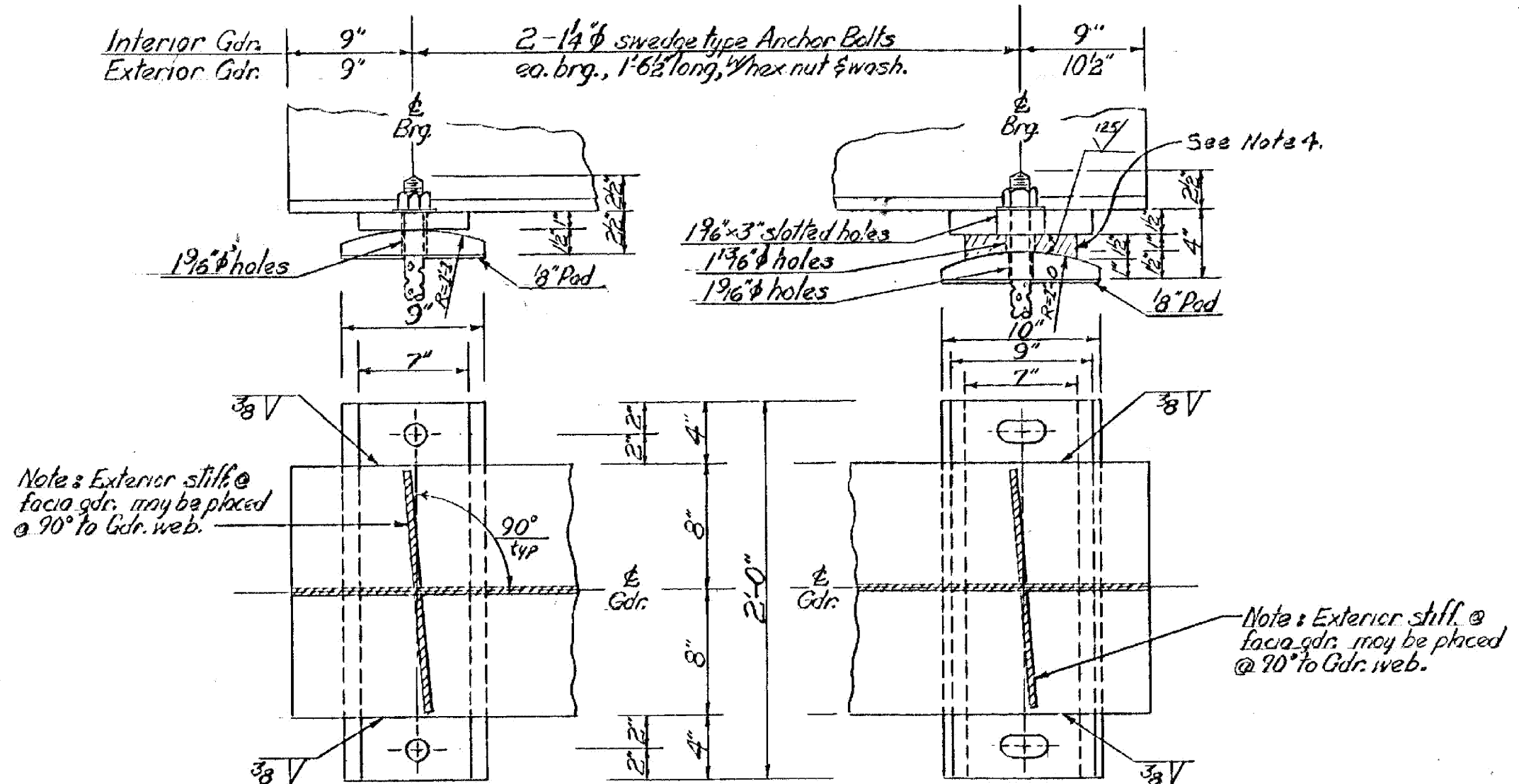
FRAMING PLAN
Scale 3/32"=1'-0"



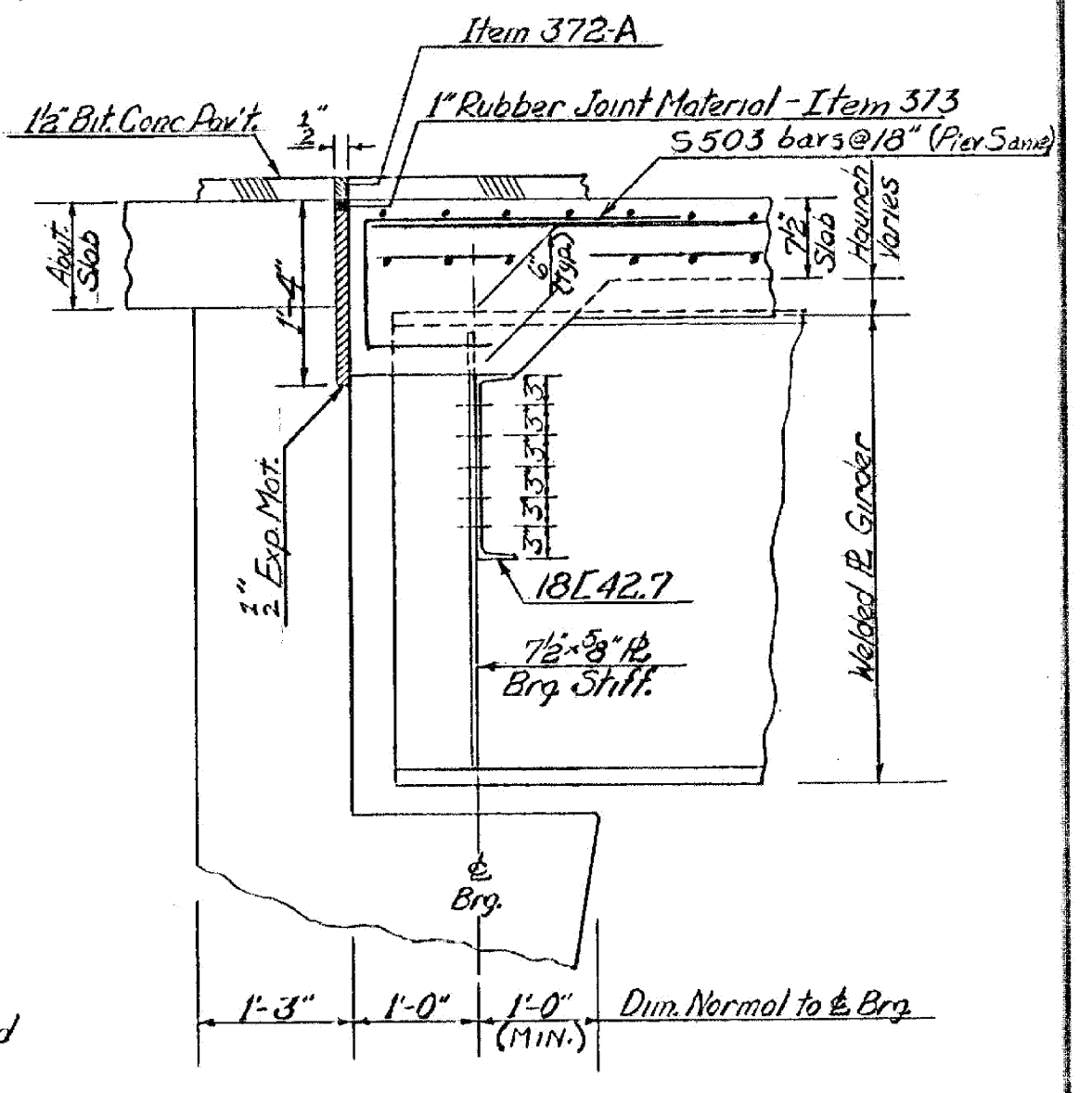
TYPICAL SECTION
Scale 3/8"=1'-0"



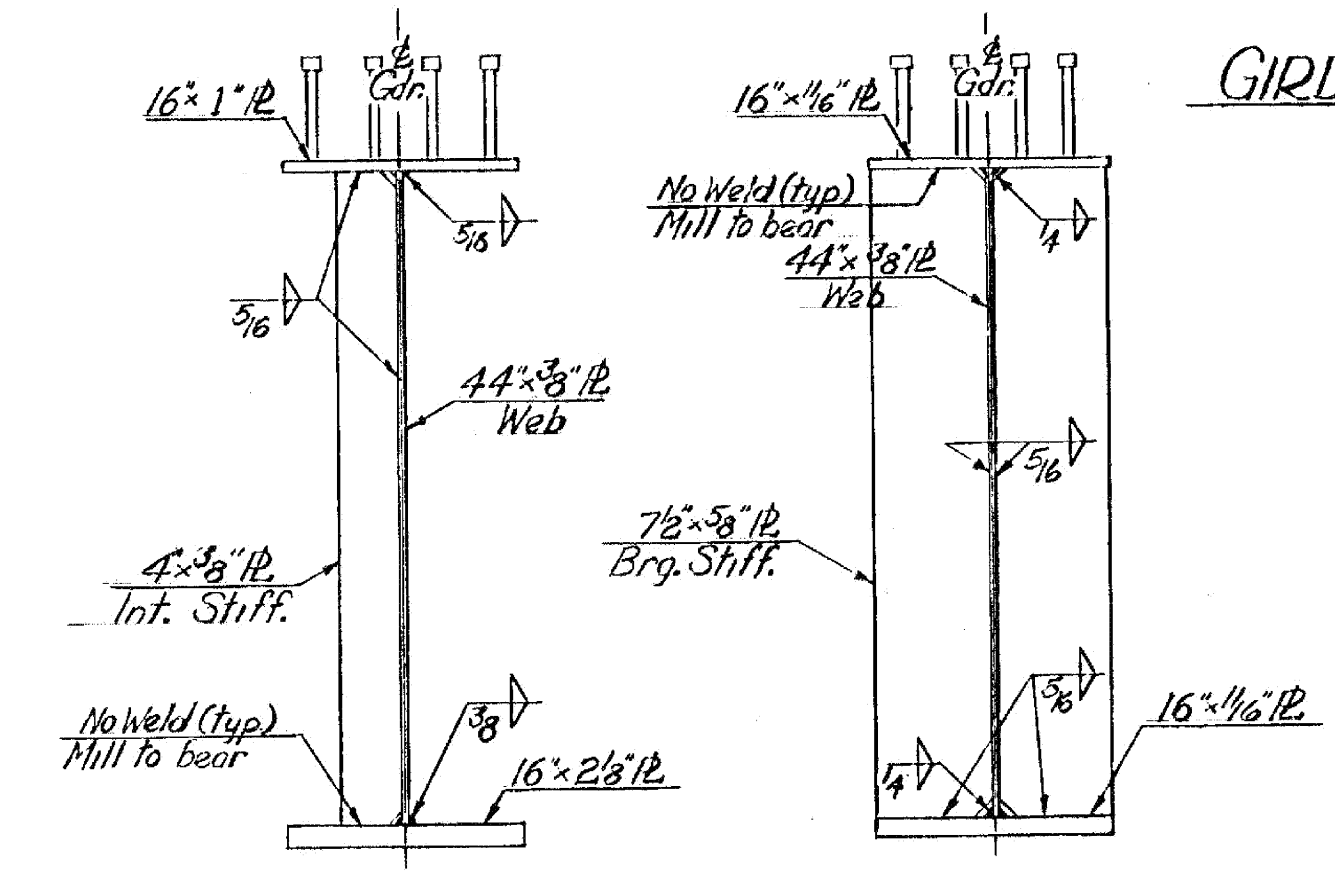
GIRDER DETAILS
Not to Scale



FIXED BEARING DEVICE DETAILS
Scale 1/2"=1'-0"



SECTION AT ABUTMENTS
Scale 3/4"=1'-0"



SECTION A-A Scale 1/4"=1'-0"
SECTION B-B Scale 1/4"=1'-0"

NOTES

- Items indicated on this sheet are included in the superstructure quantities.
- Spiral Reinforcement - Item #03. Channels, spiral reinforcing or other mechanical shear connector devices may be substituted for the indicated welded studs, upon the approval of the Engineer.
- Comber indicated is the ordinate at midpoint of beam.
- The 1 1/2" x 7" x 2'-0" PL in the Expansion Bearing shall be Cust Bronze conforming to ASTM B22-40T, class B. This plate shall have tapered recesses, comprising not less than 25% of the bearing area, filled with a lubricating compound. The coefficient of friction shall be less than 0.10. If not specified use A36 steel.
- Shop splices in the web and flanges shall be A.W.S. prequalified full penetration type and shall be fully detailed on the shop drawings.

HARTFORD-SHARON
IM MEMB(15)

SHEET 21 OF 47
BRIDGE 41C
FOR REFERENCE ONLY

STATE OF VERMONT
DEPARTMENT OF HIGHWAYS

TOWN OF: HARTFORD
ROUTE No. I-91 STA. 27+02.89
FRAMING PLAN-TYPICAL SECTION
Ramp "C" over Interstate I89
SCALE as noted
SURVEYED BY
DRAWN BY RND CHECKED BY DHR & RUM
PROJECT No. I-91-1(25)
BR 301 of 311 SHEET 125 OF 265 Sheet 196 of 212