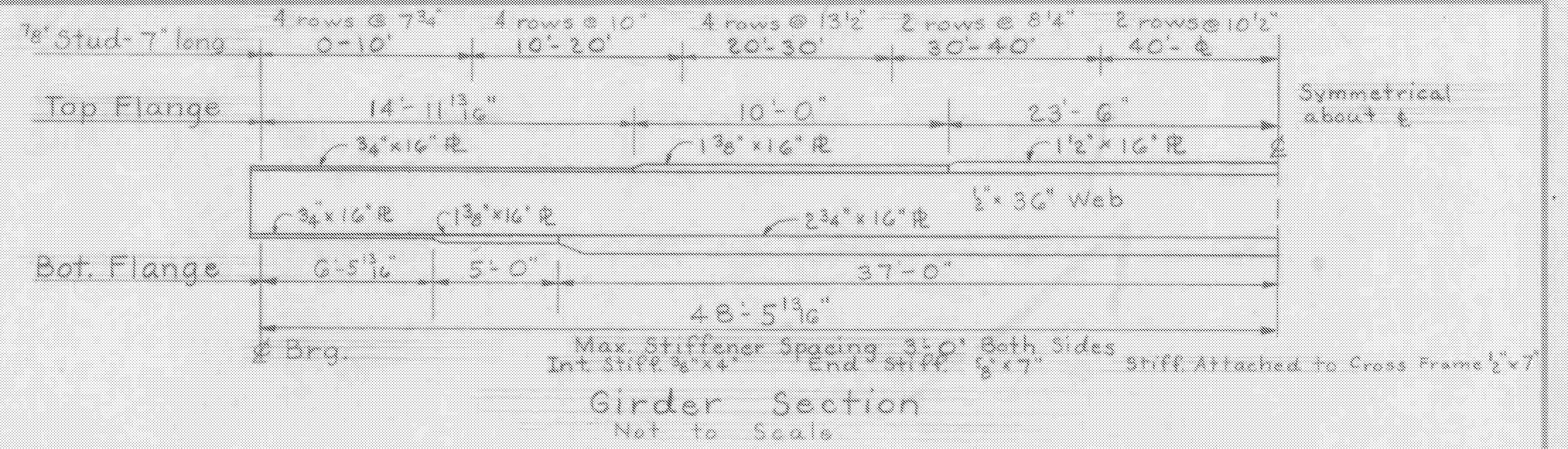
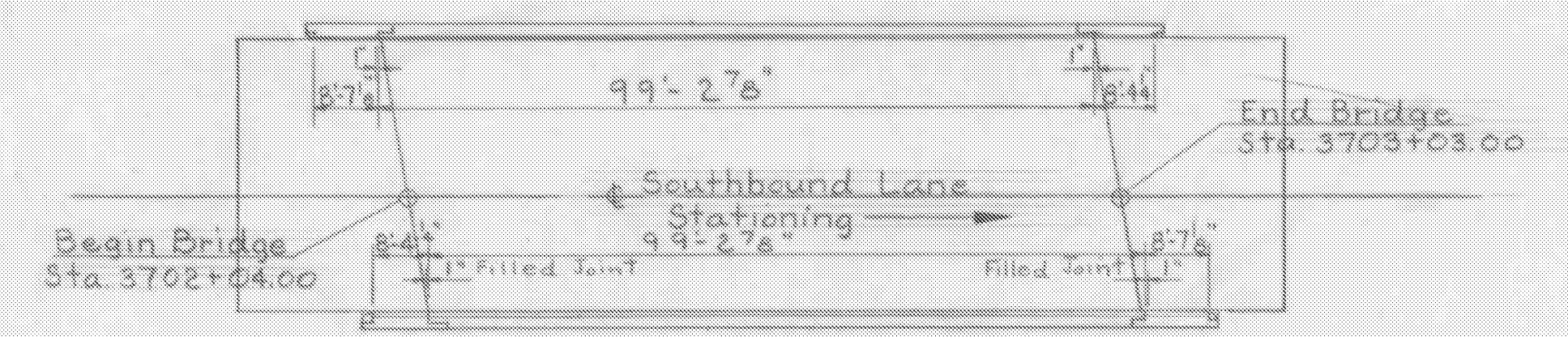


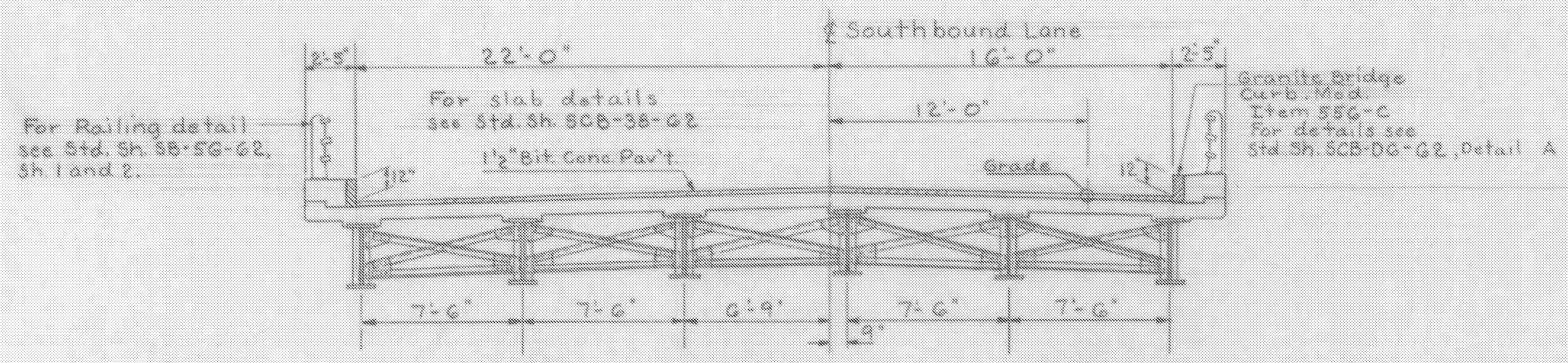
Framing Plan
Scale 1"=10'



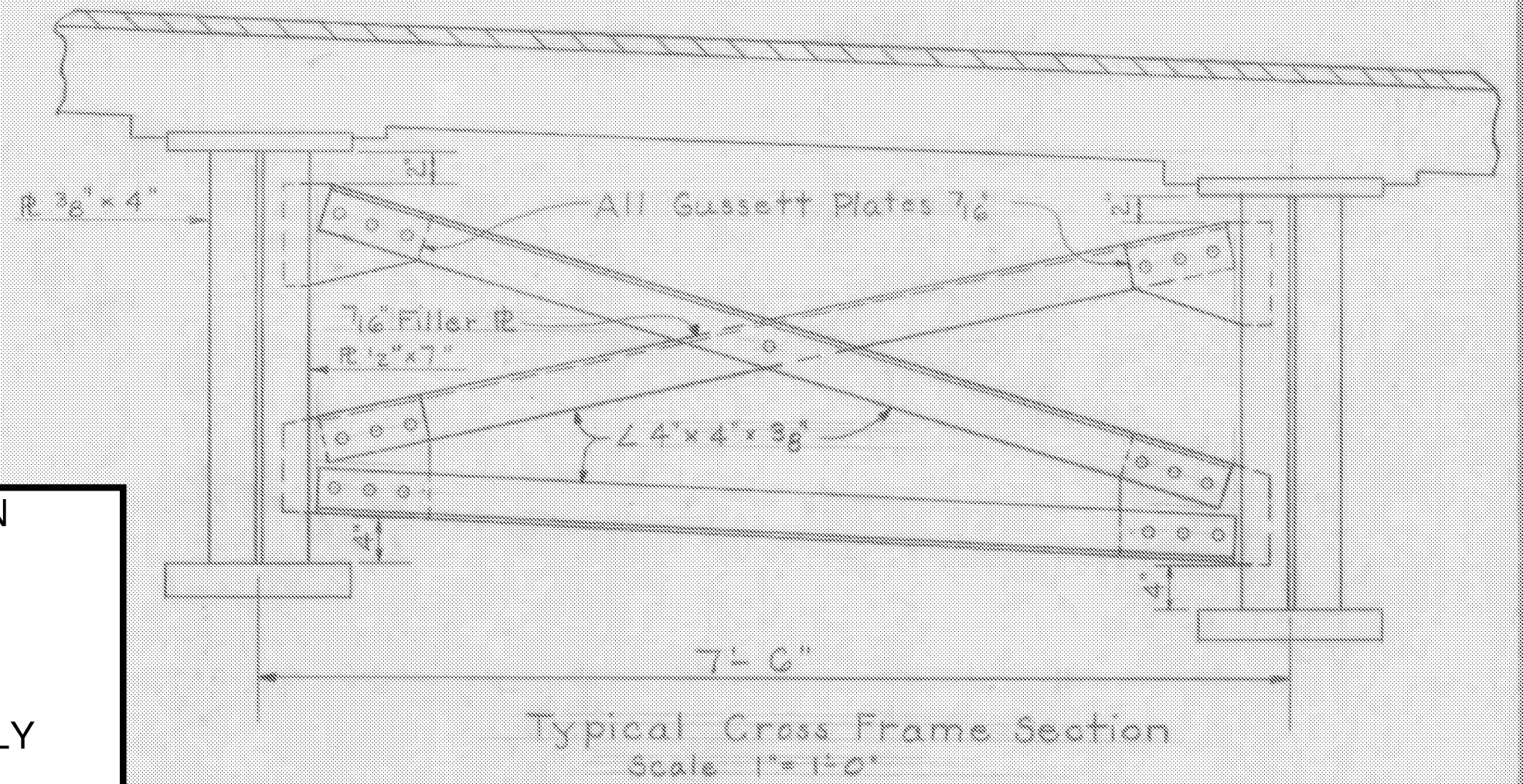
Girder Section
Not to Scale



Curb Layout
Scale 1"=20'



Typical Section
Scale 1"=5'



Typical Cross Frame Section
Scale 1"=1'-0"

HARTFORD-SHARON
IM MEMB(15)

SHEET 15 OF 47
BRIDGE 41N&S
FOR REFERENCE ONLY

- Notes:
1. For General Notes see Std. Sh. SCB-D1-62.
 2. Spiral reinforcement may be substituted for studs, on the basis of 1 1/2 pitches of 5/8" φ spirals per double row of studs. Estimated weight given in Item 403 is based on spiral reinforcement.
 3. * Indicates quantity to be included in roadway quantities.
 4. See Std. Sh. SCB-D2-62, Detail C, for detail of beam haunch.
 5. For details of joints at the ends of the bridge see Approach Slab Details sheets BR110 & BR111.

Estimated Superstructure Quantities (S.B.Lane)				Stage II Construction	
ITEM NO.	ITEM	UNIT	TOTAL	FINAL	
* 318	Tar Emulsion for Bridge Floors	Gal.	167		
* 361-B	Bituminous Conc. Pav't. Mod. (Dense Graded Top Course)	Ton.	36		
372A	Joint Sealer - Hot Poured	L.F.	118		
372C	Joint Sealer - Preformed	L.F.	136		
401-AA	Concrete Class AA, Mod.	C.Y.	116 140		
402	Reinforcing Steel	Lb.	31,668 31,589		
403	Spiral Reinforcement (3060#)	L.S.	12	1/2	
404	Structural Steel @ Sta. 3702+50	Lb.	170,800 170,474		
556-C	Granite Bridge Curb, Mod.	L.F.	198 198		
572	Bridge Railing	L.F.	343 343		

STATE OF VERMONT
DEPARTMENT OF HIGHWAYS

TOWN OF Hartford

ROUTE NO. I 91 LOG STA. I 91 over Ramp C (Southbound)

Superstructure Details

SCALE As Noted

SURVEYED BY Jewett

DRAWN BY A.J.C. CHECKED BY WOOD

PROJECT NO. I 91-1(25)

SHEET 74 OF 26