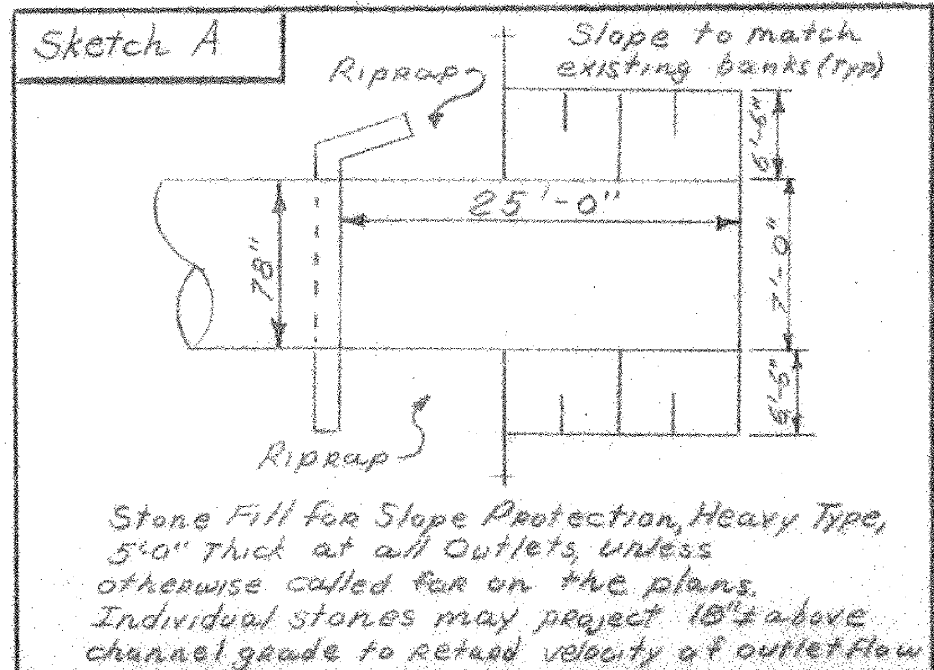
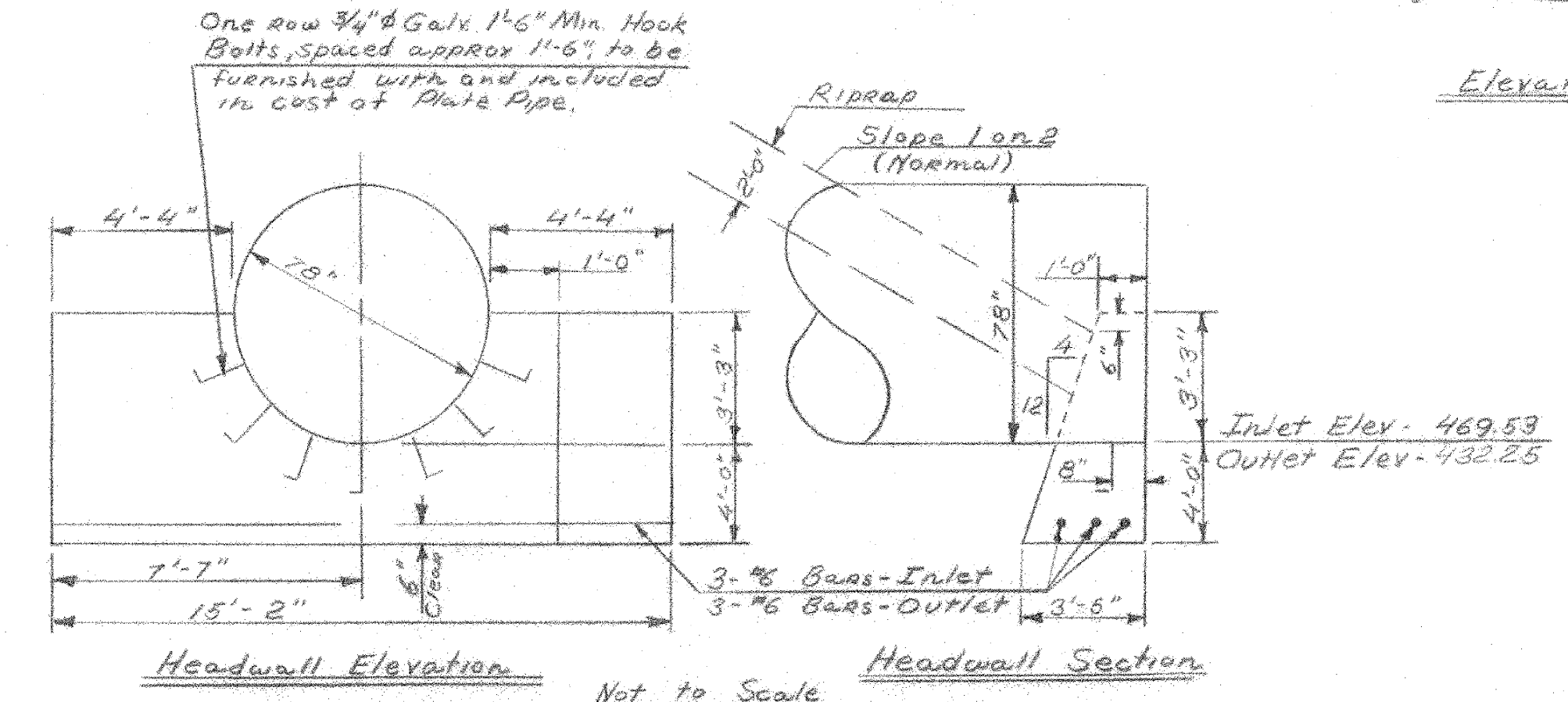
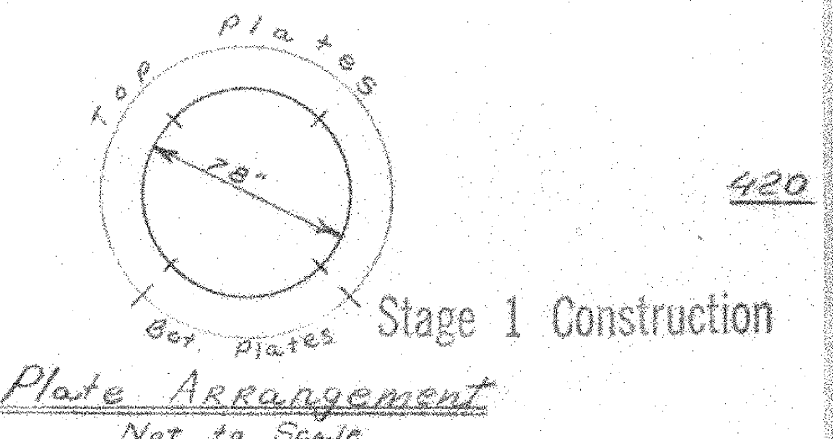


Reinforcing Steel				
No. Pieces	Size	Length	Mark	Type Location
3	#6	18'-0"	601	STR. Upstream
3	#6	20'-0"	602	STR. Downstream

Bend in Field

HARTFORD - SHARON
 IM 089-1(55)
 189 - BR. NO. 9-2
 SHEET 17 of 20
 FOR REFERENCE ONLY

- Notes:**
- Dia. of Pipe: 78"
 - OA Slope Length: 654'-0"
 - OA Horiz. Length: 653'-0"
 - Camber: 0
 - Gage T.R.s: 10 ga.
 - Gage B.R.s: 8 ga.
 - Wt. Per Ft.: 185 lbs/ft
 - Total Wt.: 120,990 lbs.
 - Waterway: 33'



ITEM NO.	ITEM	UNIT	NET	TOTAL	FINAL
	CHAL. EXCAV. OF EARTH	C.Y.			18
	CHAL. EXCAV. OF ROCK	C.Y.			
108C	UNGLASS. CHAL. EXCAV.	C.Y.		2270	1122
109	STRUT. EXCAV.	C.Y.		1340	1340
	CONC. CLASS. AA (MGCL)	C.Y.			
401B	SPAL. CLAS. B	C.Y.		22	18.2
402	REIN. STEEL	LBS.		172	122
429A	78" x 654' Corrugated Galvan-ized Metal Rate Pipe, Top Plates #10 ga., Bottom Plates #8 ga., Wt. 120,990 lbs.	L.S.		1	1
511	Stone Fill for Slope Protection (Heavy Type)	C.Y.		100	22
512	Stone Fill for Slope Protection (Light Type)	C.Y.		100	22
373A	Riprap (Heavy Type)	C.Y.		180	22

STATE OF VERMONT
 DEPARTMENT OF HIGHWAYS

TOWN OF HARTFORD

ROUTE No. 189 LOG STA. _____

78" x 654' CGMPP

S.B. Sta. 286+63.78 @ 30'-00' PI.

SCALE: 1" = 10'-0"

SURVEYED BY: MORRIS

DRAWN BY: L.L.L. CHECKED BY: G.E.H.

PROJECT NO. 189-1(5) Cont.

SHEET 85 OF 269