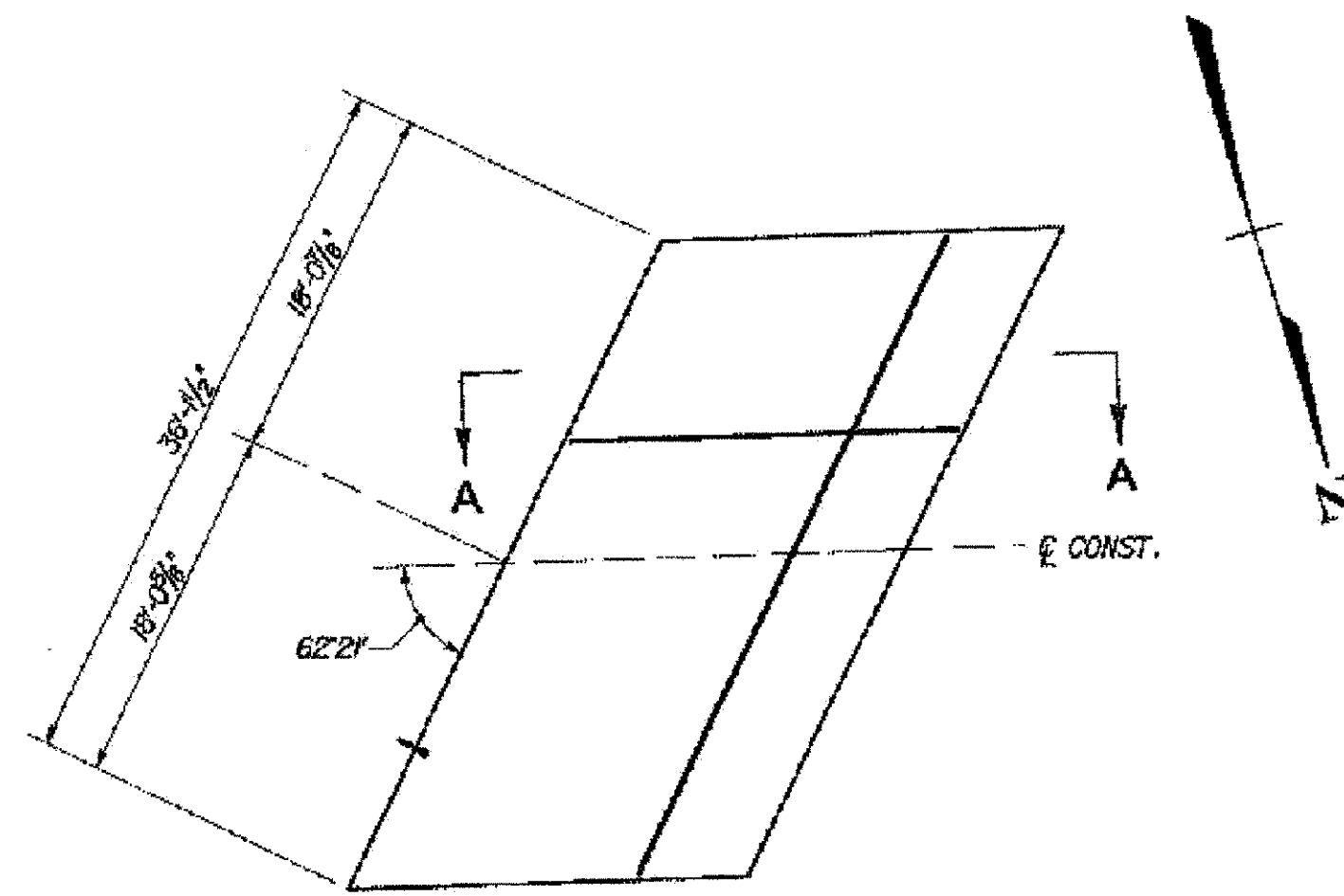
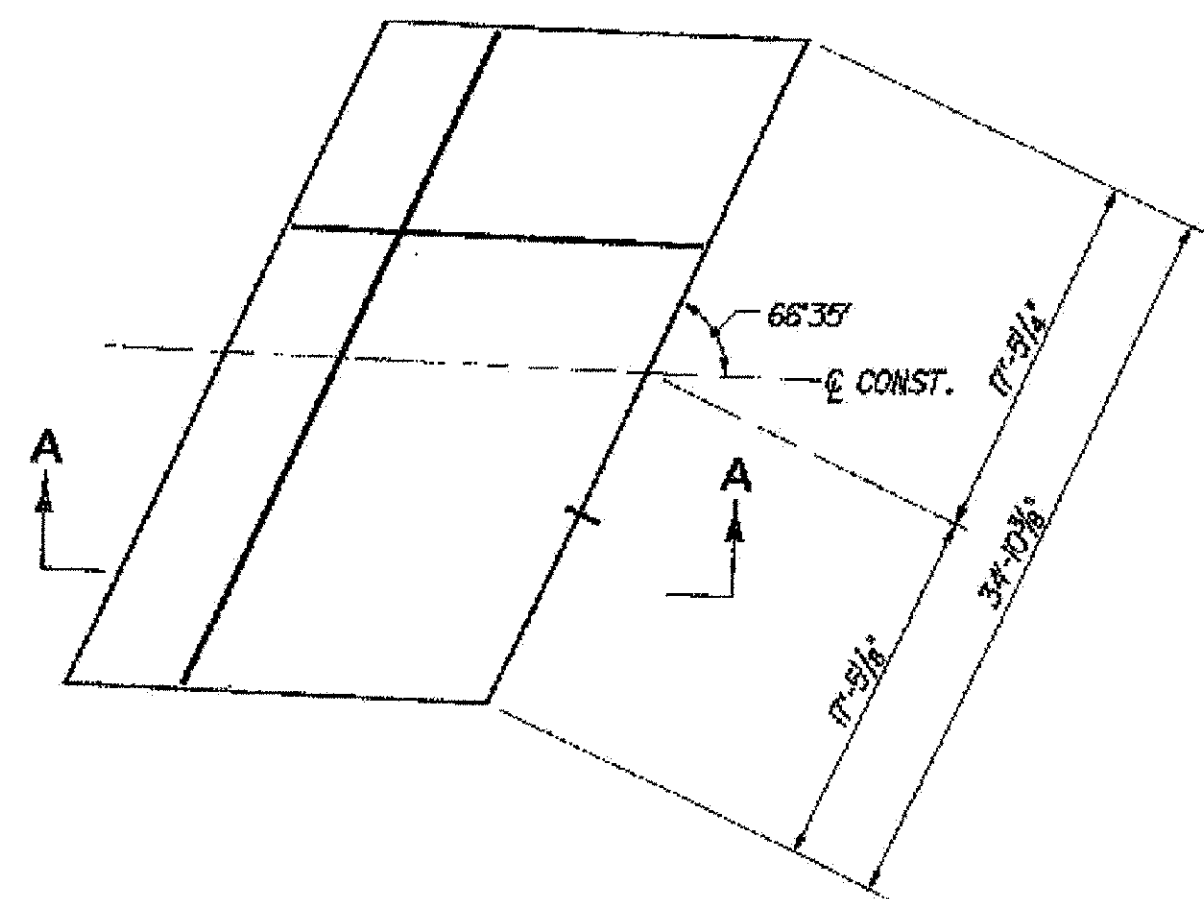


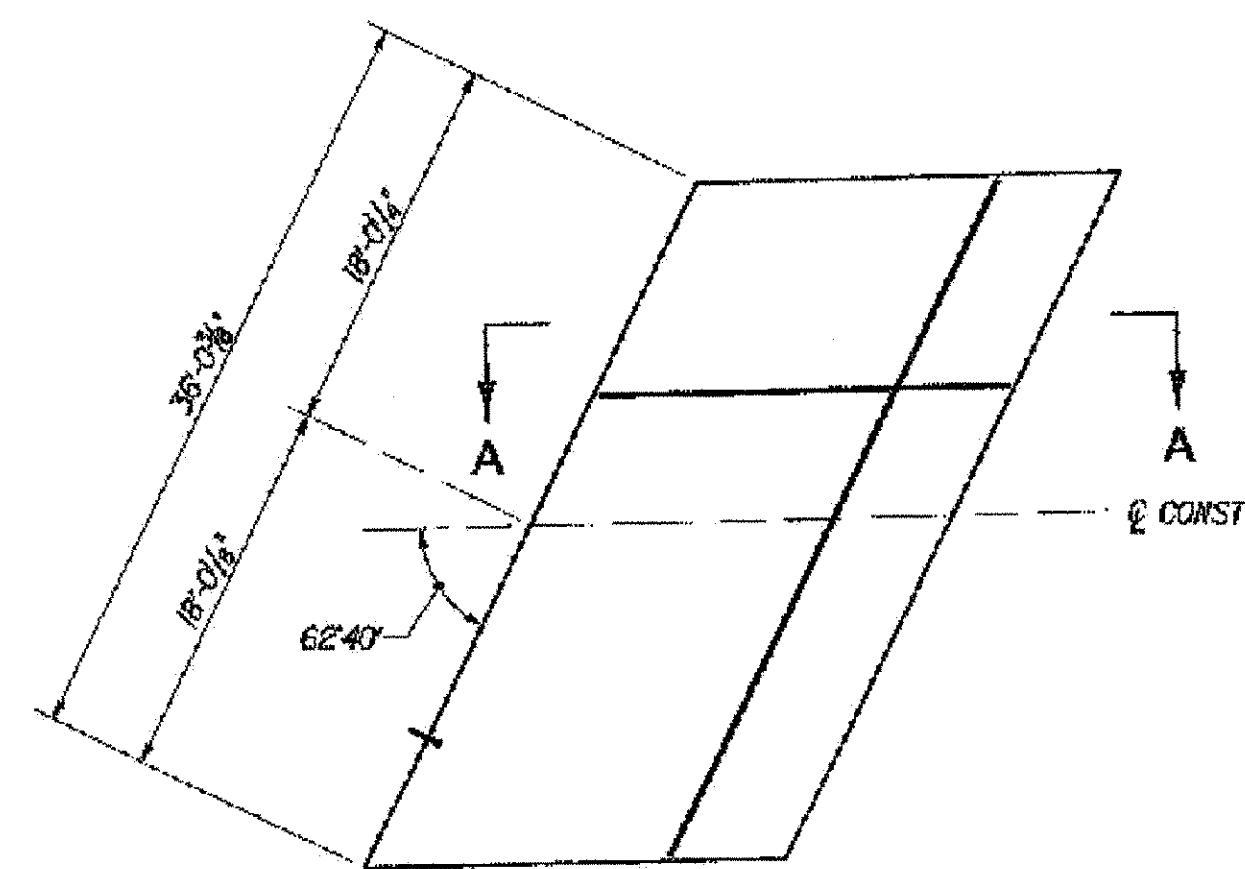
48S ABUTMENT 1



48S ABUTMENT 2

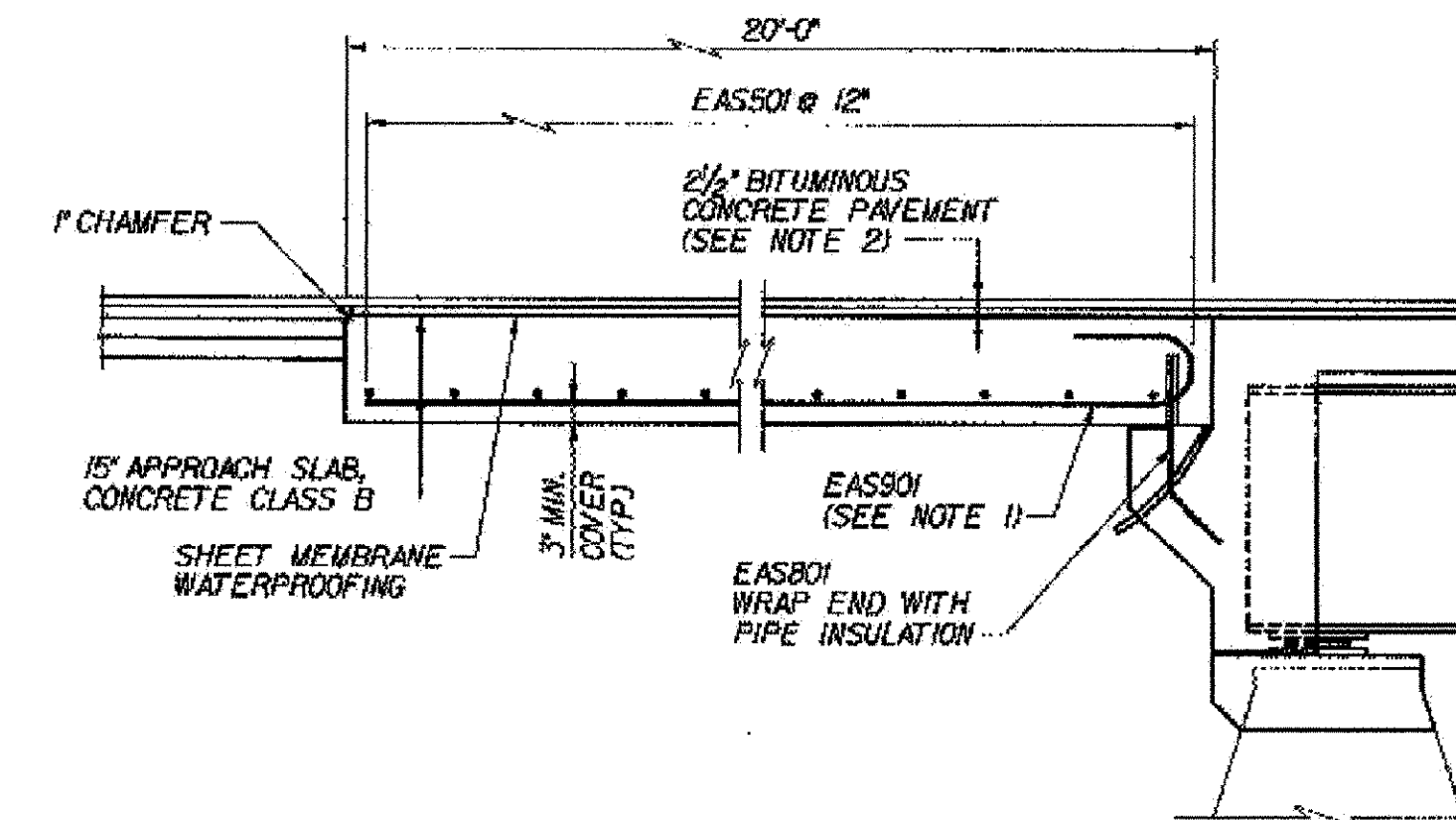


48N ABUTMENT 1



48N ABUTMENT 2

APPROACH SLAB PLANS
SCALE: 1/8" = 1'-0"



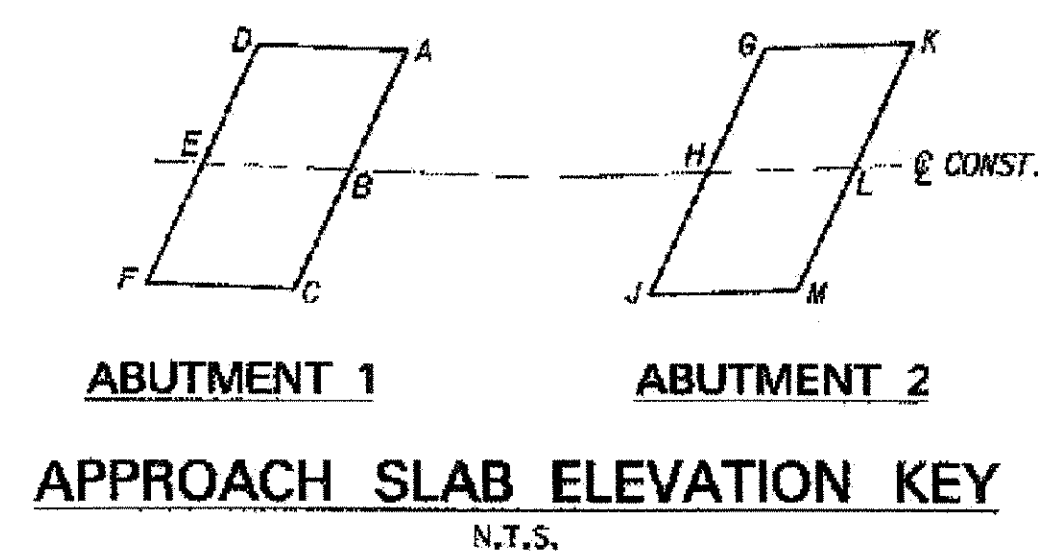
SECTION A-A
(APPROACH SLAB AT FIXED ABUT. SHOWN;
SLAB AT EXPANSION ABUT. SIMILAR)
N.T.S.

RAISED FINISHED GRADE 5/4" RAISED FINISHED GRADE 3/4"

TOP OF APPROACH SLAB ELEVATIONS					
BR 48N			BR 48S		
LOCATION	STATION	ELEVATION	LOCATION	STATION	ELEVATION
A	4+13.74	448.55.99	A	4+38.89	448.74
B	4+06.79	449.18.62	B	4+31.88	449.38
C	3+98.89	448.81.25	C	4+24.89	450.01
D	3+93.88	448.44.88	D	4+18.80	448.04
E	3+86.79	448.07.51	E	4+11.86	449.27
F	3+78.88	448.74.15	F	4+04.98	449.91
G	7+14.80	450.17.61	G	7+40.89	450.32
H	7+08.49	450.89.24	H	7+32.56	450.05
J	6+98.24	451.43.87	J	7+24.21	451.58
K	7+34.88	450.28.72	K	7+18.08	450.43
L	7+28.49	450.01.35	L	7+52.56	451.05
M	7+18.14	451.54.98	M	7+44.11	451.88

NOTES:

- TIP HOOK END OF BAR AS REQUIRED TO ACHIEVE MINIMUM COVER.
- FOR DETAILS OF APPROACH SLAB PAVEMENT AND TRANSITION TO EXISTING PAVEMENT, SEE DETAIL ON TYPICAL END OF DECK SLAB DETAILS, BRIDGE SHEET C-15.



MIDDLESEX - WATERBURY
ST-IM 089-2(42)
SHEET 19 OF 25
BRIDGES 48 N & S
FOR REFERENCE ONLY

**STATE OF VERMONT
AGENCY OF TRANSPORTATION**

Town Of	MIDDLESEX-BOLTON	Bridge No.	48N&S
Highway No.	I-89	Log Sta.	
		Surv. Sta.	
I-89 OVER LITTLE RIVER			
APPROACH SLAB DETAILS (48N&S)			
Designed By	P.W. SZUSTAK	Drawn By	R.A. BOTZENHART
Checked By	J.P. HALSTEAD	Date	10/99
		Bridge Design Supervisor	Date
PROJECT	MIDDLESEX-BOLTON	PROJECT NO.	IM-089-2(26)
TVGA CAD Drawing No.	48aplab	Date	10/99
Bridge Sheet No.	BR48-6	Sheet	66 of 307

TVGA ENGINEERING, SURVEYING, P.C.