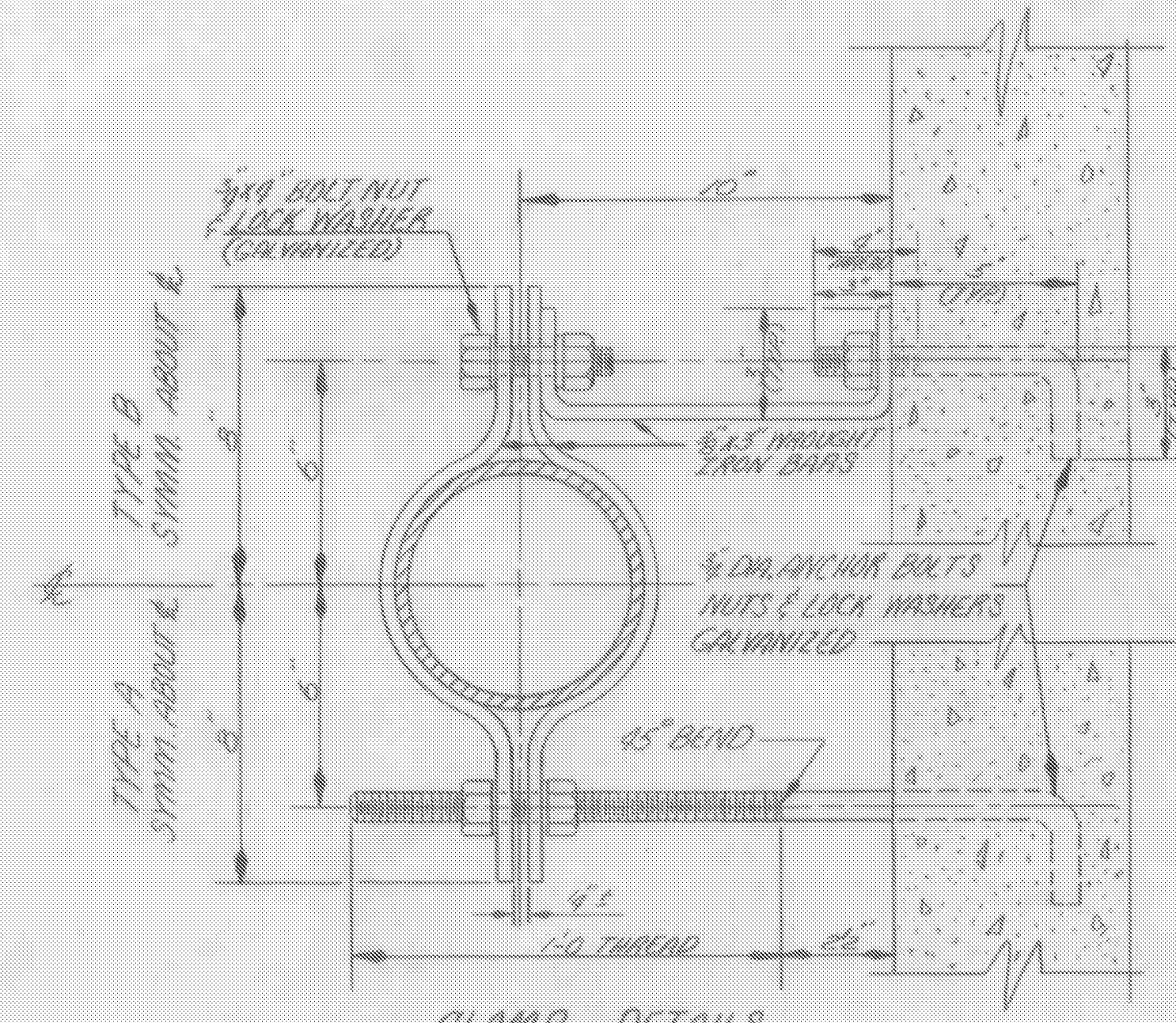
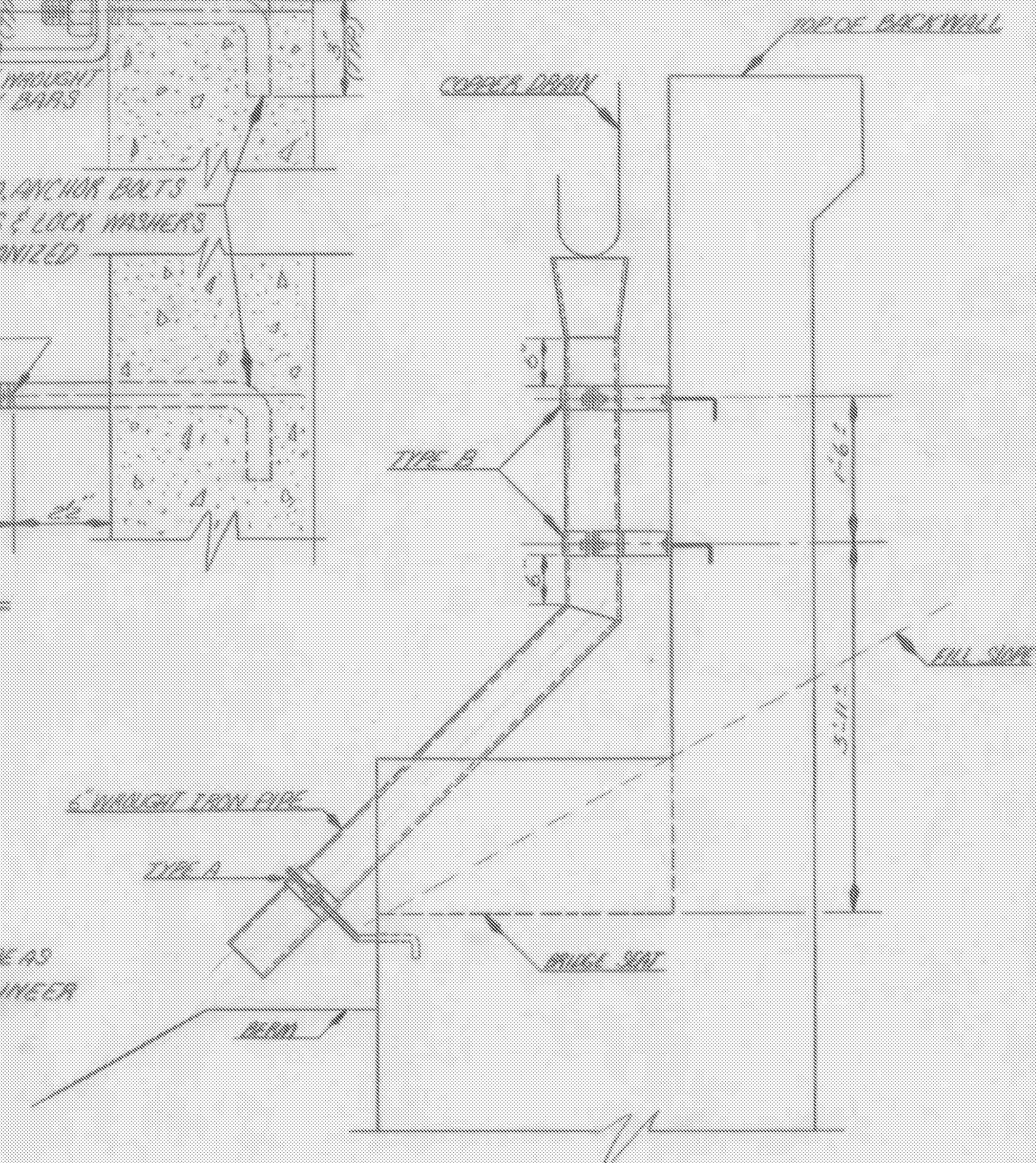


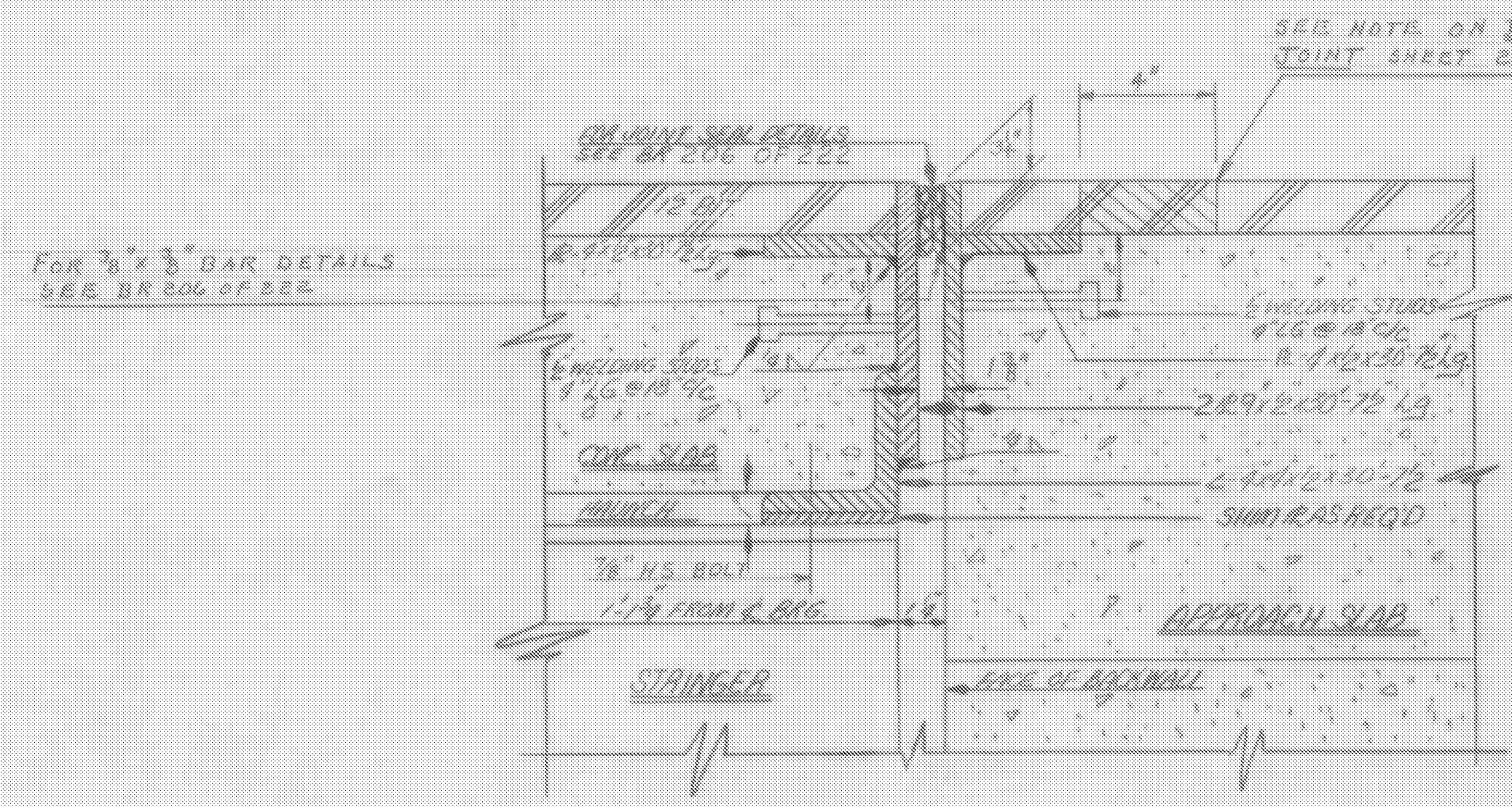
FINGER PLATE DETAIL
SCALE 3"=1'-0"



CLAMP DETAILS
SCALE 3"=1'-0"

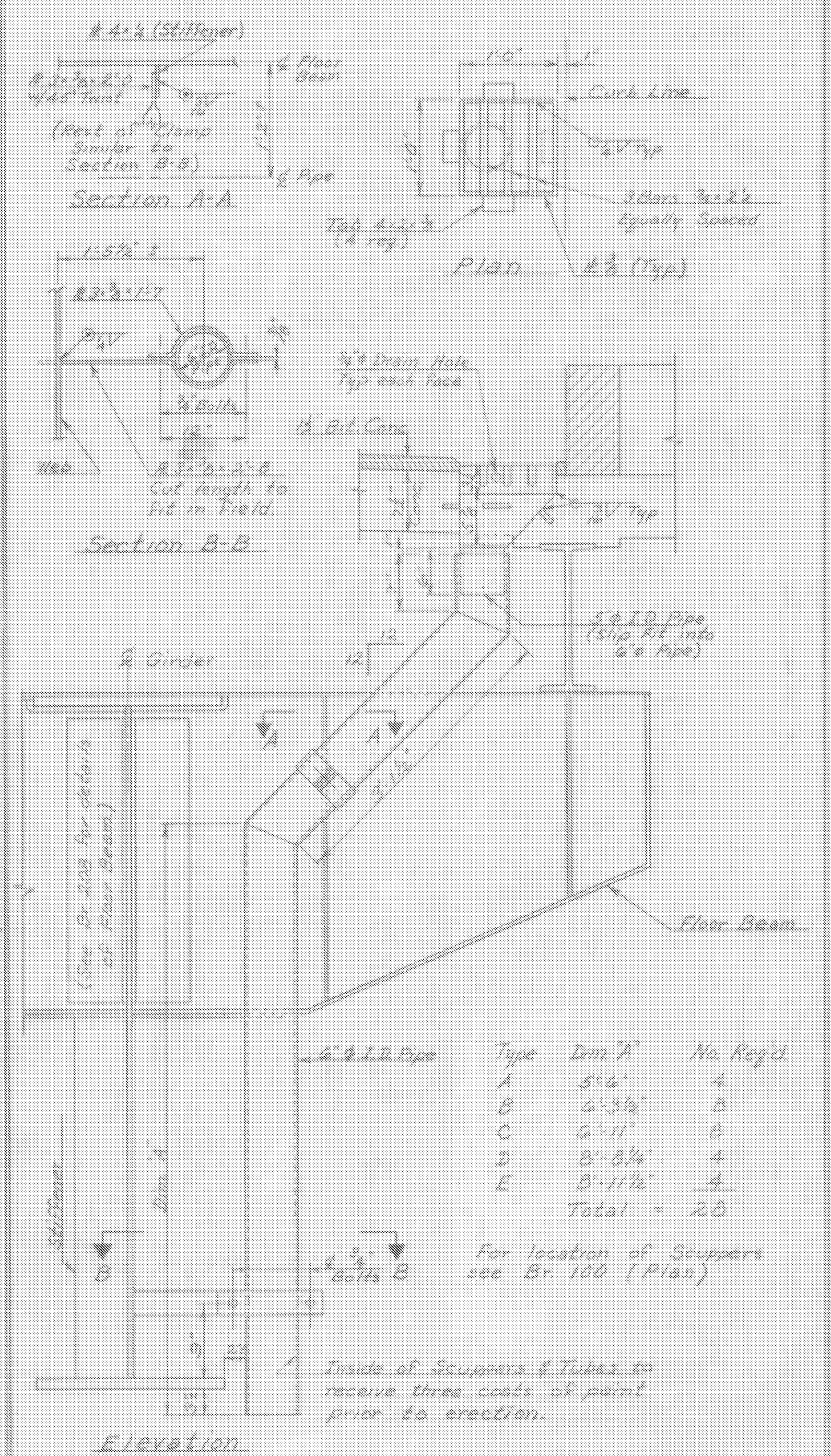


DRAINAGE AT EXP. DAMS
SCALE 3/4"=1'-0"



ROTATORY JOINT AT
ABUTMENT NOS 3&4
SCALE 3"=1'-0"

RIM JOINT AT CURB
SEE DEFLECTION JOINT BR 206 OF 222



Scupper Details
Scale: 1"=1'-0"

(Scupper Details added to sheet by W. Tripp, 4-11-66; Crd by E. Oalley BR 212 OF 222

WINDSOR-HARTLAND
IM MEMB(14)

SHEET 39 OF 39
BRIDGE 40S
FOR REFERENCE ONLY

ITEM NO.	ITEM	UNIT	REF	TOTAL	FINAL
	CHAN. EXCAV. OF EARTH	C.Y.			
	CHAN. EXCAV. OF ROCK	C.Y.			
	UNCLASS. CHAN. EXCAV.	C.Y.			
	STRUCT. EXCAV.	C.Y.			
	CONC. CLASS AA (MOD.)	C.Y.			
	CONC. CLASS B (MOD.)	C.Y.			
	REINF. STEEL	LBS.			
	ASPHALTIC-ARB. COATING	S.Y.			
	TREATED TIMBER PILING	L.F.			
	SPLICES FOR STEEL PILING	EA.			
	STEEL PILING	L.F.			
	UNTREATED TIMBER PILING	L.F.			

STATE OF VERMONT
DEPARTMENT OF HIGHWAYS

TOWN OF HARTLAND

ROAD NO. _____ BRIDGE NO. _____

I-91 OVER THE OTTAUQUECHEE RIVER
FINGER PLATE, DRAIN TROUGH,
CLAMP AND ROTATION JOINT DETAILS

SCALE AS SHOWN

SURVEYED BY _____

DRAWN BY S.H.S. CHECKED BY R.L.O.

PROJECT NO. I-91-1(22) CONT. "A" (31)

SHEET 63 OF 103 Sheet 171 of 242