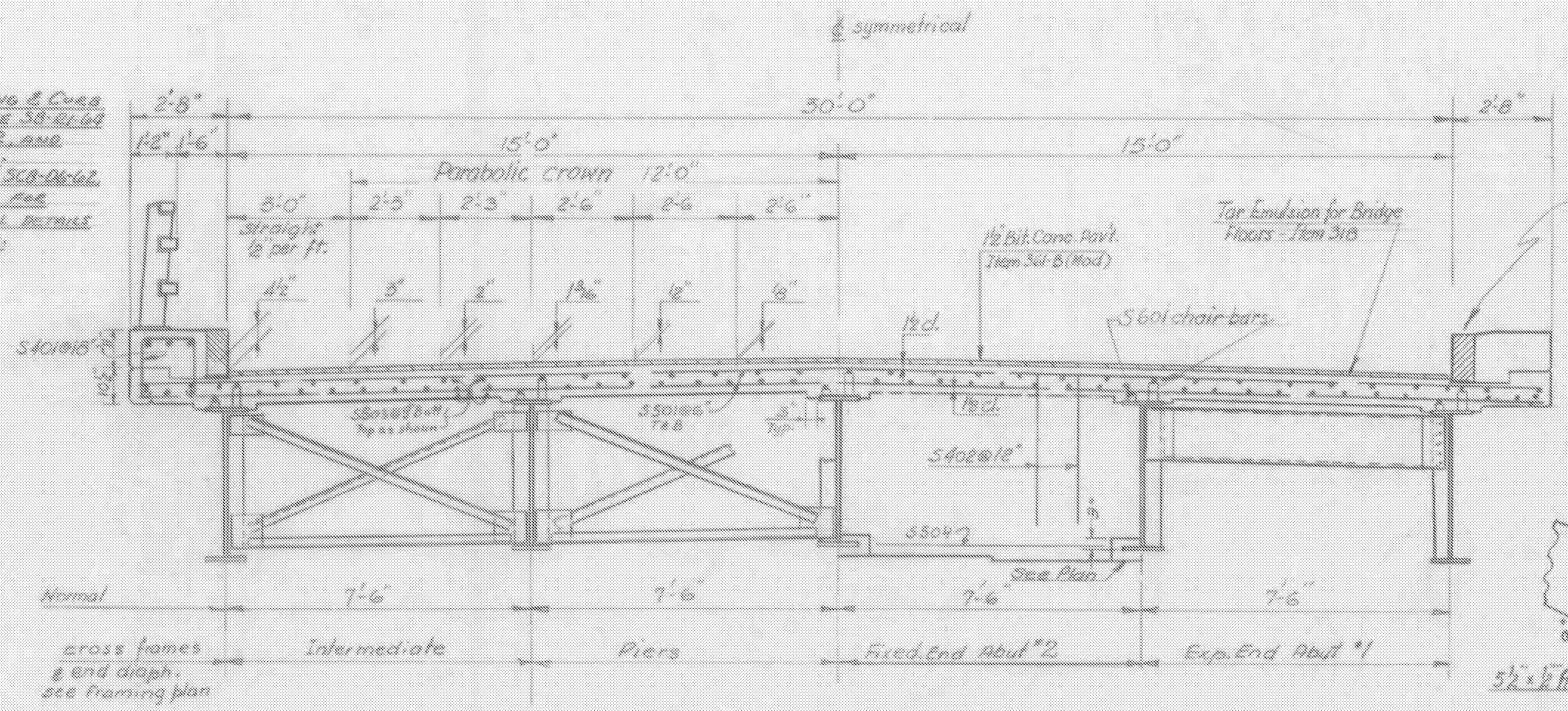
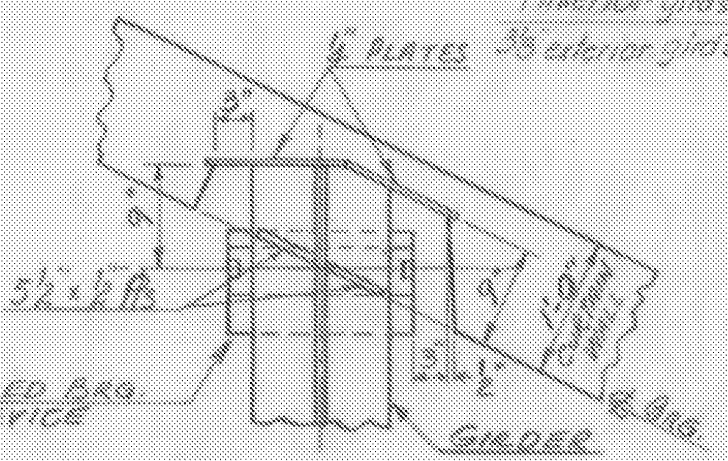
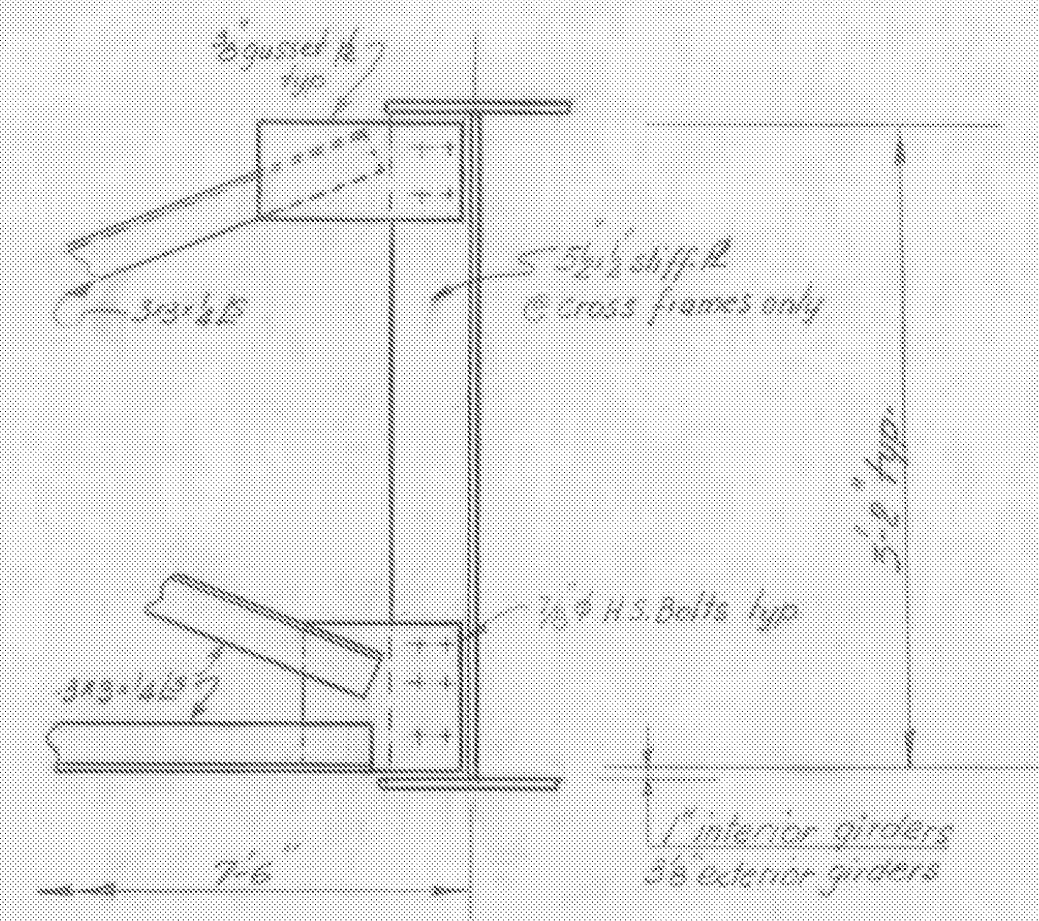
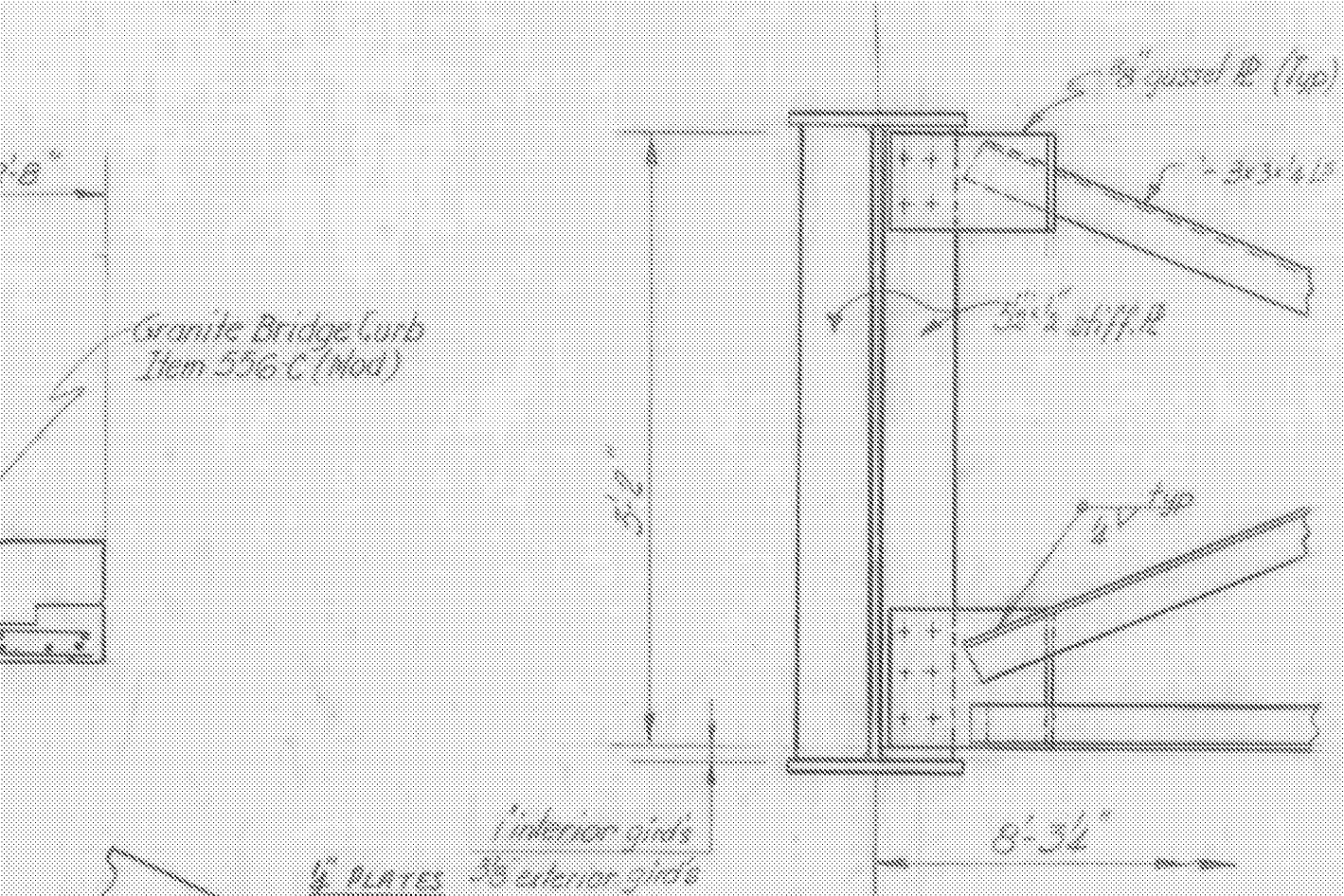


FOR RAILING & CURB
DETAILS SEE SB-21-64
SHEETS 1 & 2, AND
SB-23-64.
REFER TO SCB-D2-62
DETAIL A FOR
ADDITIONAL DETAILS
OF CURB.

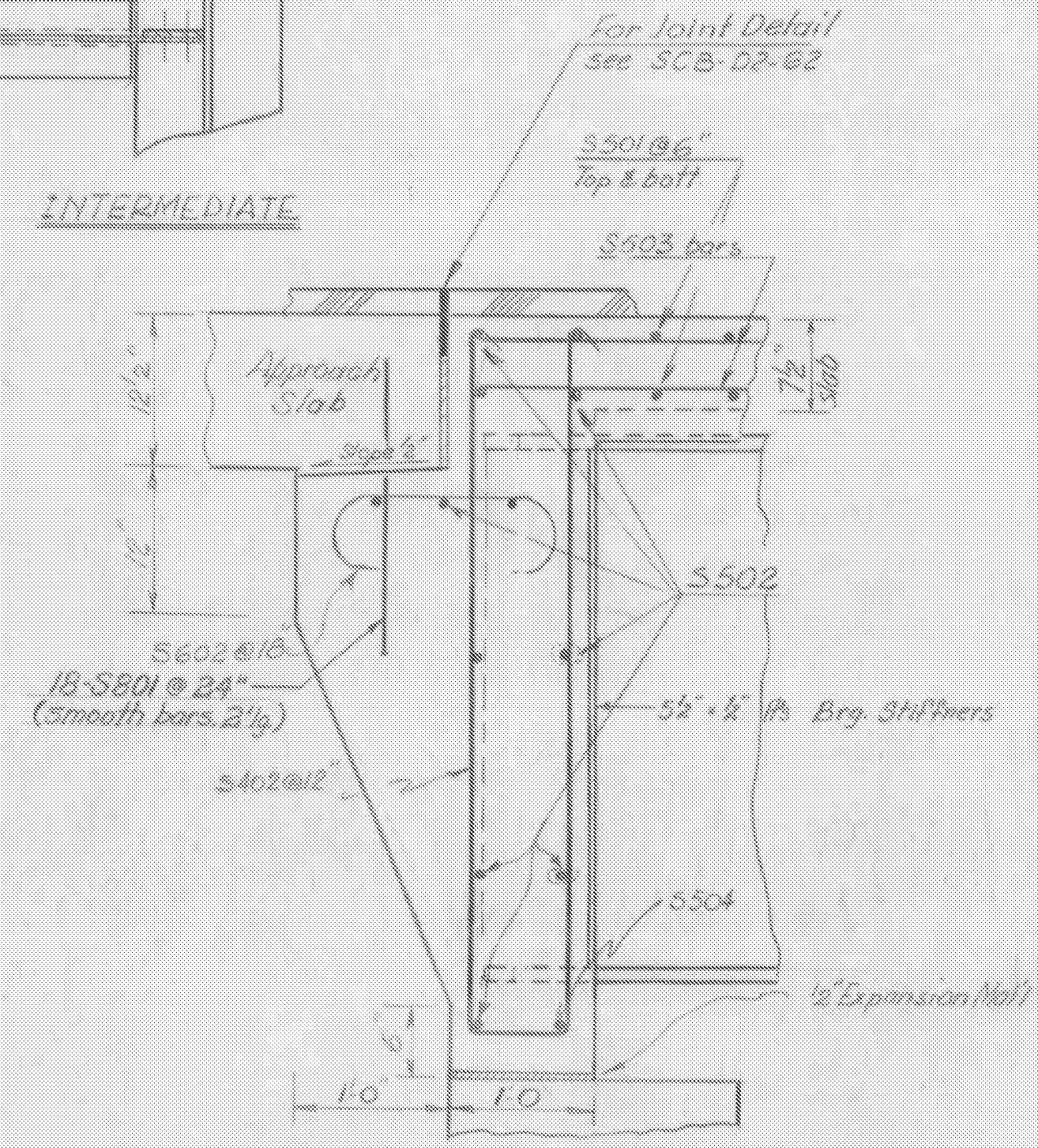


SECTION (NON-COMPOSITE - SHOWN)
scale 3/8" = 1'ft
see framing plan for studs in composite section

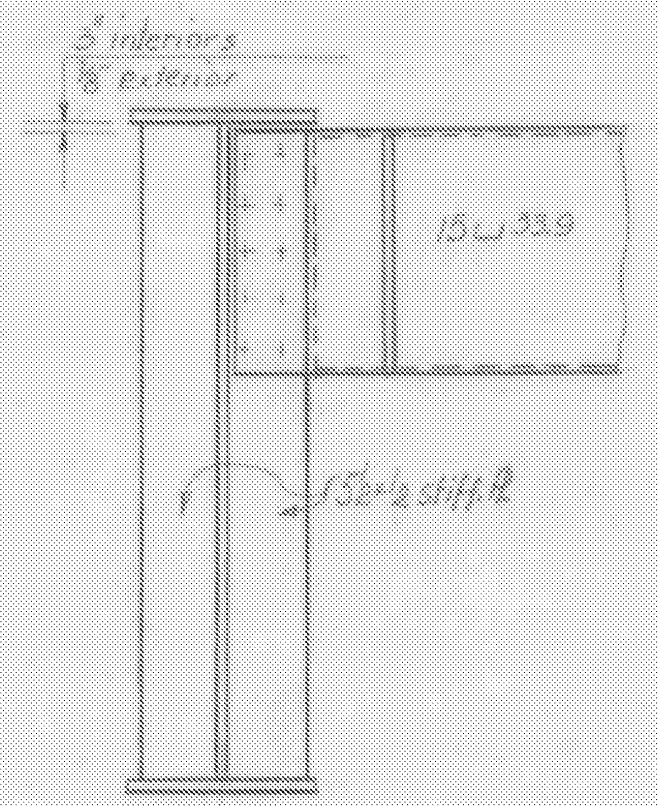


PLAN OF CURTAIN WALL AT
BEARING DEVICE (ABUT. #2)
SCALE 3/4" = 1'-0"

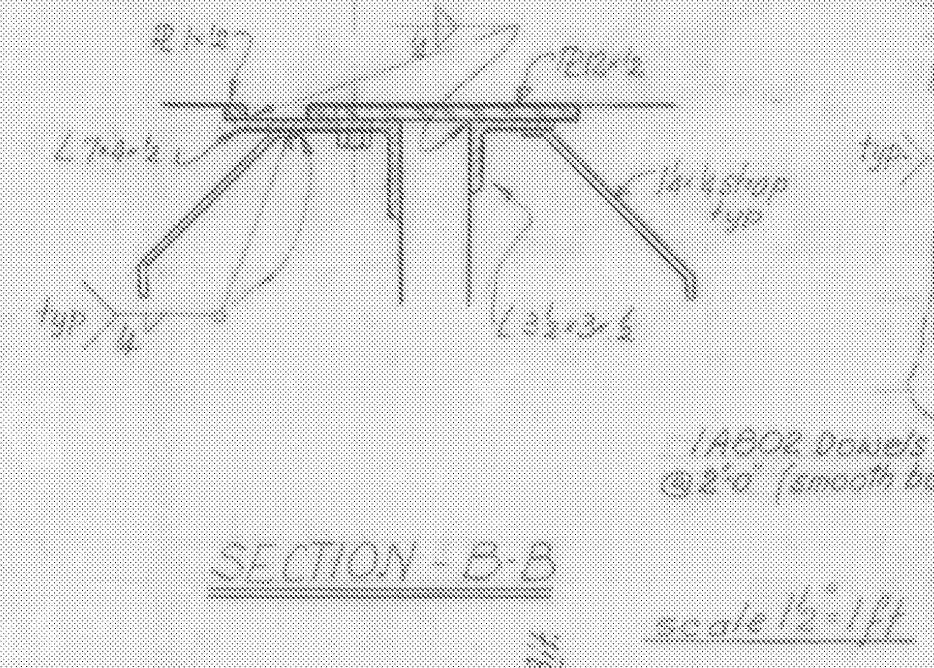
CROSS FRAME DETAILS
scale 1" = 1'ft



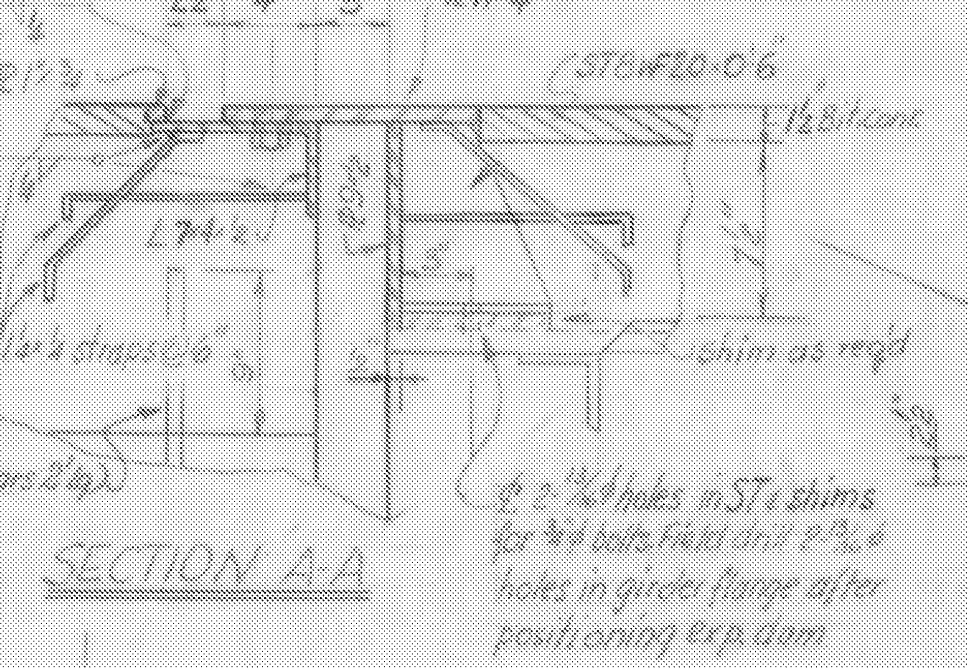
BACKWALL AT ABUTMENT #2
scale 1/2" = 1'ft



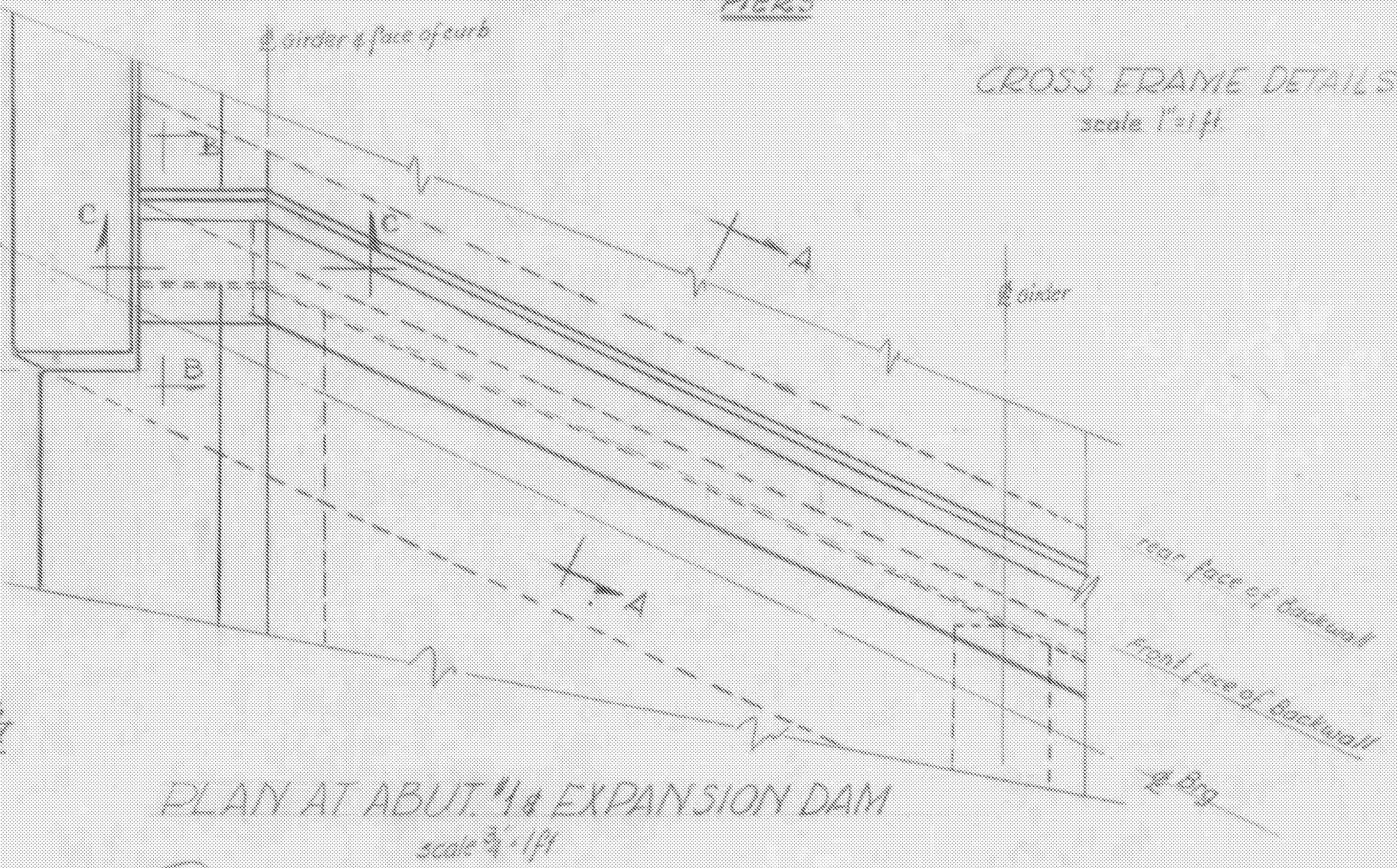
END DIAPHRAGM ABUT. #1
scale 1" = 1'ft



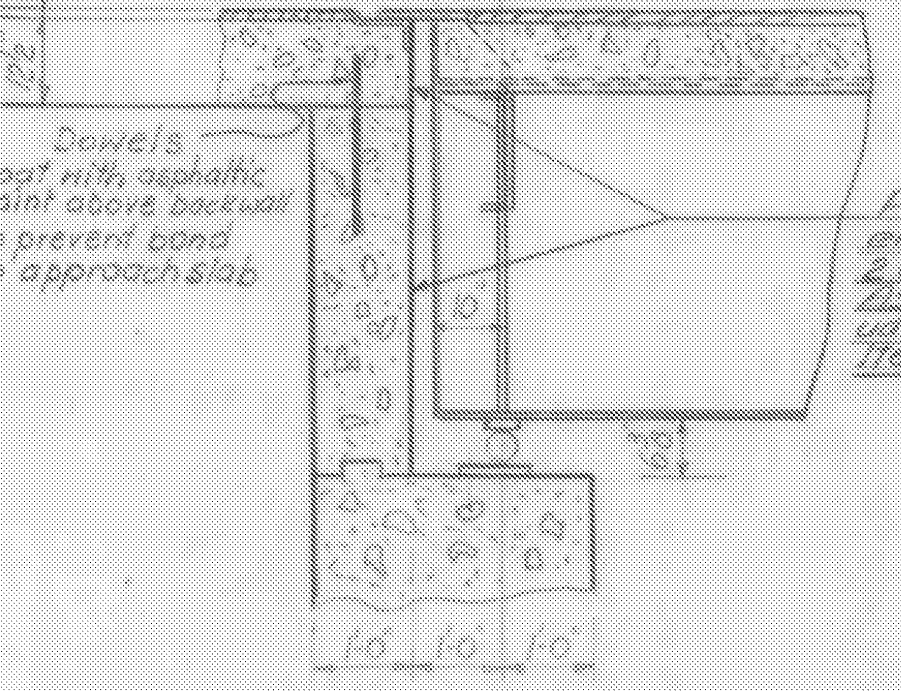
SECTION - B-B
scale 1/2" = 1'ft



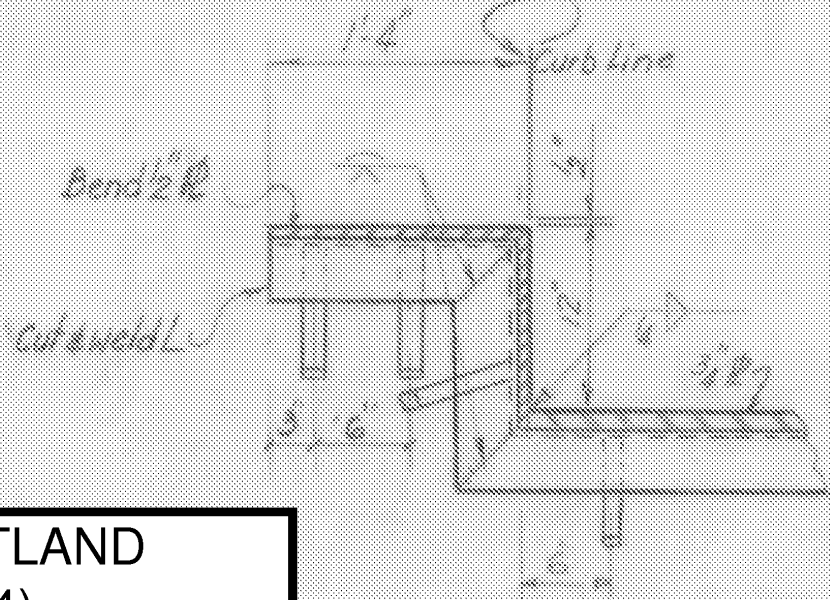
SECTION A-A
scale 1/2" = 1'ft



PLAN AT ABUT. #1 EXPANSION DAM
scale 3/4" = 1'ft



LONGITUDINAL SECTION
AT ABUTMENT #1
scale 1/2" = 1'ft



SECTION C-C
scale 1" = 1'ft

WINDSOR-HARTLAND
IM MEMB(14)

SHEET 33 OF 39
BRIDGE 39N&S
FOR REFERENCE ONLY

ITEM NO.	ITEM	UNIT	NET	TOTAL	FINAL
	CHAN. EXCAV. OF EARTH	C.Y.			
	CHAN. EXCAV. OF ROCK	C.Y.			
	UNCLASS. CHAN. EXCAV.	C.Y.			
	STRUCT. EXCAV.	C.Y.			
	CONC. CLASS AA (MOD.)	C.Y.			
	CONC. CLASS B (MOD.)	C.Y.			
	REINF. STEEL	LBS.			
	ASPHALTIC-ASB. COATING	S.Y.			
	TREATED TIMBER PILING	L.F.			
	SPLICES FOR STEEL PILING	EA.			
	STEEL PILING	L.F.			
	UNTREATED TIMBER PILING	L.F.			

STATE OF VERMONT
DEPARTMENT OF HIGHWAYS

TOWN OF Hartland - Hartford
ROUTE No. 191 STA. 3518+0
INTERSTATE OVER U.S. RT. 5
TYR SUPERSTRUCTURE DETAILS
SCALE as noted
SURVEYED BY _____
DRAWN BY *R.H. Kowalski* CHECKED BY *D.H.R.*
PROJECT NO. I-91-1-10-2-1-1(31)
BR107 SHEET 45 OF 103 Sheet 165 of 242