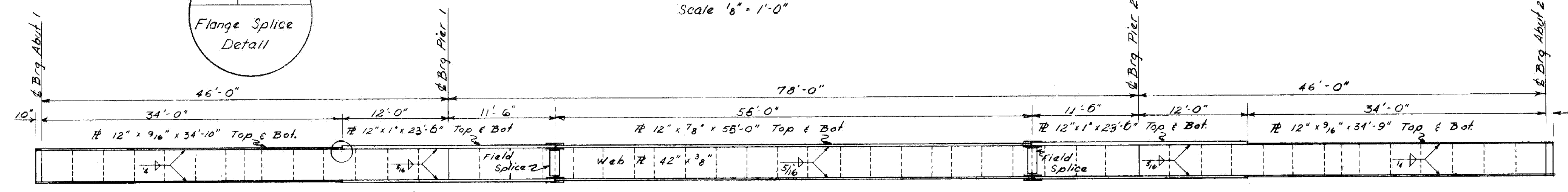
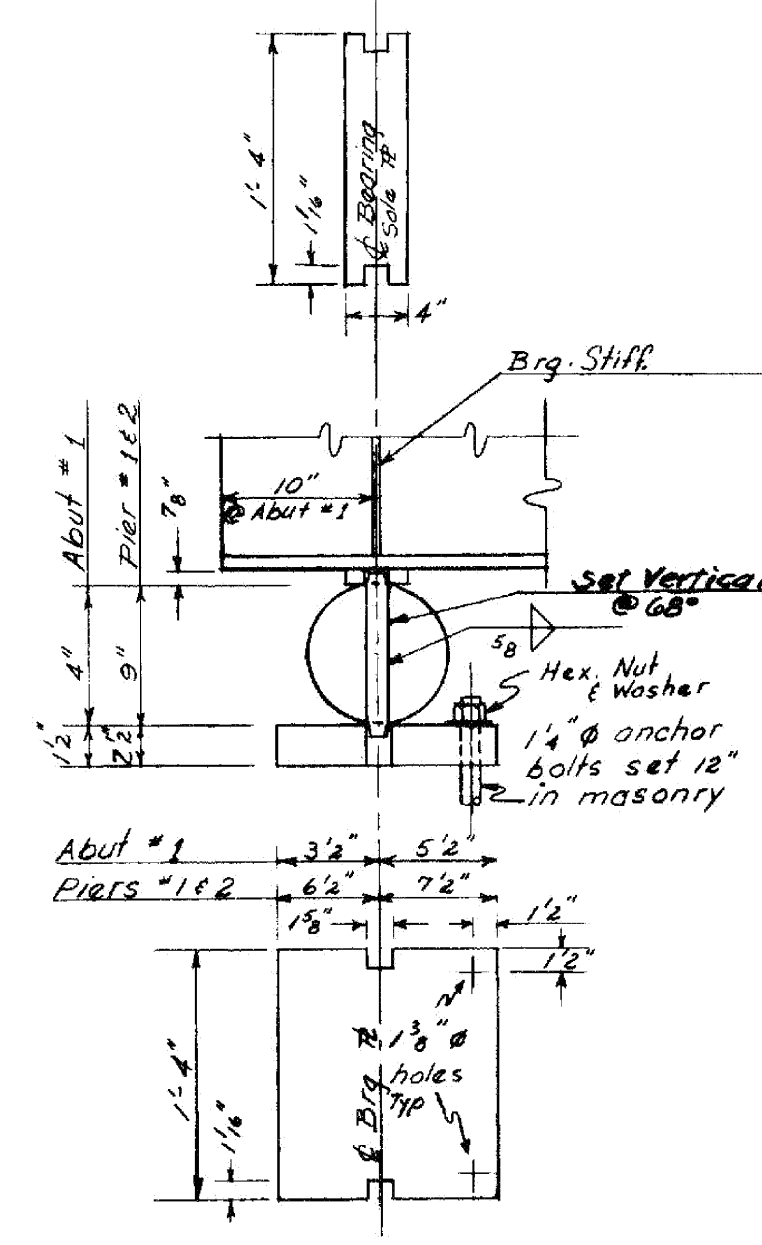


**GIRDER ELEVATION**  
Scale 1/8" = 1'-0"

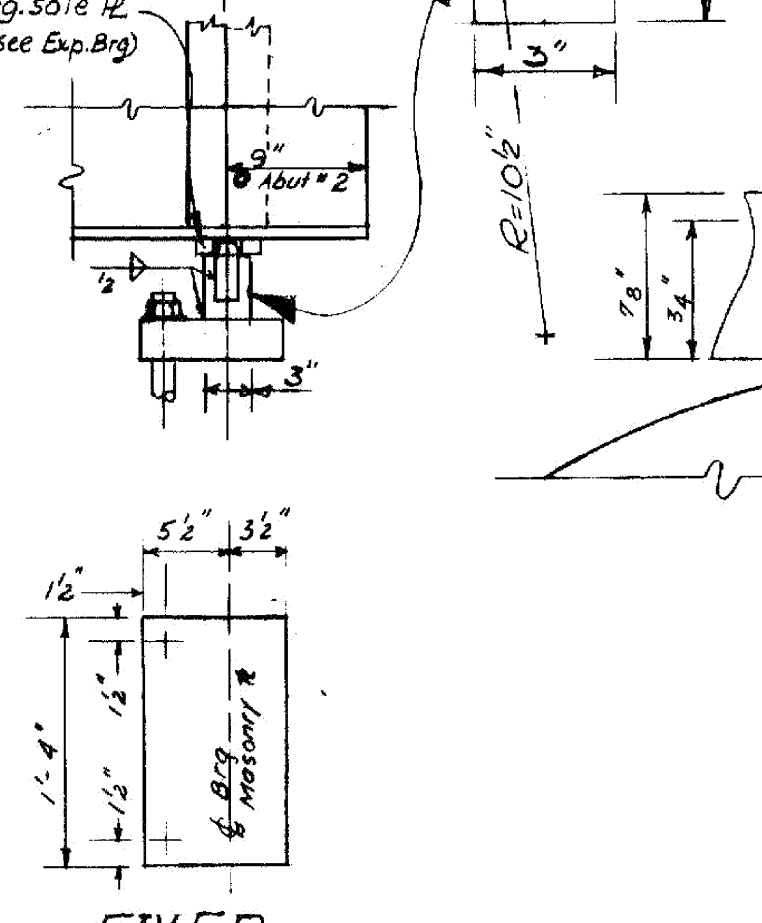
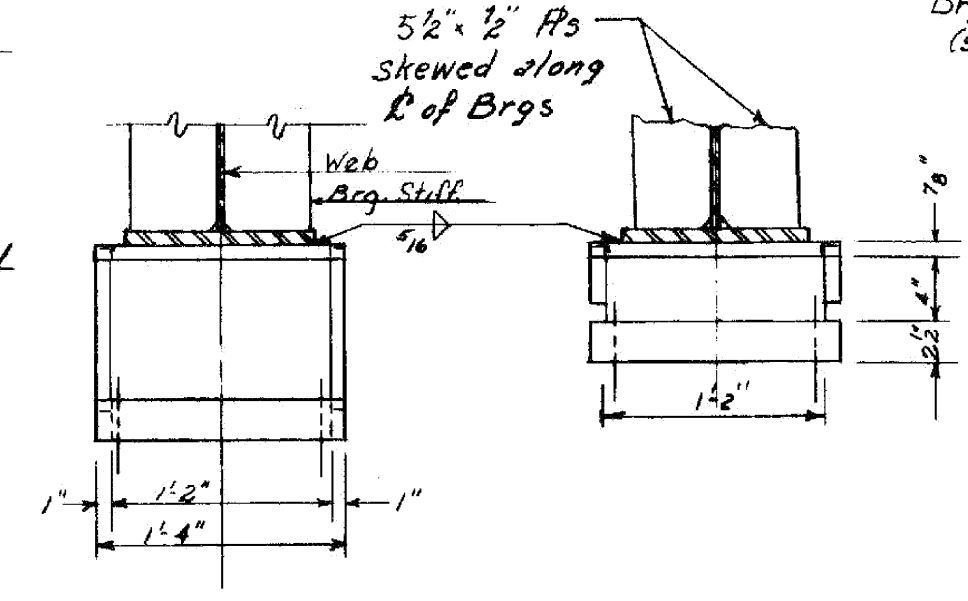


WINDSOR-HARTLAND  
IM MEMB(14)  
SHEET 32 OF 39  
BRIDGE 39N&S  
FOR REFERENCE ONLY

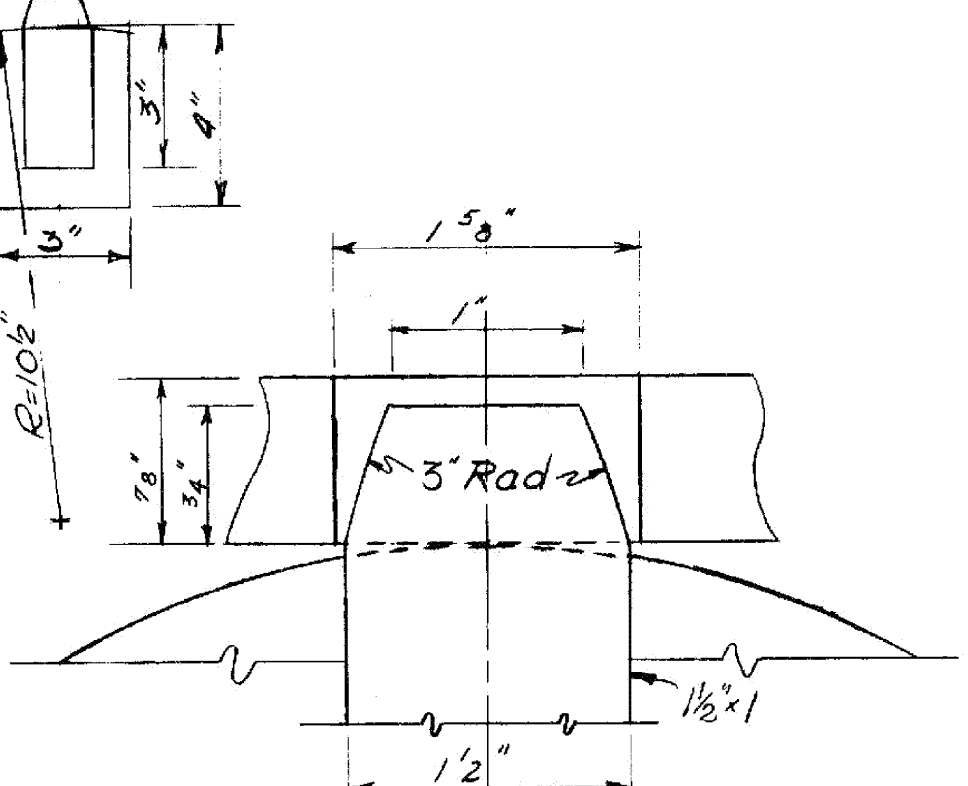
- NOTES**
- Plates for expansion bearings shall be high yield strength structural alloy steel (A514). Steel for rollers shall be cold finished carbon steel ASTM-A108 (Grade 1045) turned and polished. Rollers shall be preheated in furnace to 400°F, held at this temp until welding is completed, and then allowed to cool slowly. Side bars shall be ASTM-A36. Plates shall be straightened to plane surfaces.
  - All steel for fixed bearings shall be ASTM A-36
  - All bolts shall be 3/4" diameter high yield strength bolts, and shall conform to ASTM-A325
  - In lieu of the above pouring sequence the slab may be placed in one continuous pour, under the direction of the Engineer, using a retarding admixture for concrete meeting the requirements of the General Special Provisions as specified under Concrete Item 401, section 401.02-H, General.



**BEARING DETAILS**  
Scale 1" = 1'-0"



**PINTLE DETAIL**  
Scale 1" = 1'-0"



ITEM NO.	ITEM	UNIT	NET	TOTAL	FINAL
	CHAN. EXCAV. OF EARTH	C. Y.			
	CHAN. EXCAV. OF ROCK	C. Y.			
	UNCLASS. CHAN. EXCAV.	C. Y.			
	STRUCT. EXCAV.	C. Y.			
	CONC. CLASS AA (MOD.)	C. Y.			
	CONC. CLASS B (MOD.)	C. Y.			
	REINF. STEEL	LBS.			
	ASPHALTIC ASB. COATING	S. Y.			
	TREATED TIMBER PILING	L. F.			
	SPLICES FOR STEEL PILING	EA.			
	STEEL PILING	L. F.			
	UNTREATED TIMBER PILING	L. F.			

STATE OF VERMONT  
DEPARTMENT OF HIGHWAYS  
TOWN OF HARTLAND-HARTFORD  
ROUTE No. 1 91 STA. 3510  
INTERSTATE OVER U.S. #5  
FRAMING PLAN & BEARING DETAILS  
SCALE As Noted  
SURVEYED BY  
DRAWN BY DHR CHECKED BY RWR  
PROJECT NO. I 91-1 122 Cont. 4  
SHEET 44 OF 103