

SHEET NO.	TITLE PAGE
1	TITLE PAGE
2	ALIGNMENT SHEET
3	TYPICAL CROSS SECTION OF IMPROVEMENT (BIT CONC. PAV'T. ITEM 361-B MOD.)
4	R.O.W. DETAIL SHEET
5	QUANTITY SHEET (ITEMS)
6	QUANTITY SHEET (DRAINAGE)
7-8	EARTHWORK AND GRADE SHEETS
9-12	PLAN AND PROFILE SHEETS
13	BLANK
14-15	BLANK
16	A-61 SOLID ROCK EXCAVATION
17	B-1 BANKING TABLES
18	B-5 TYPICAL SLOPE GRADING
19	B-6 MUCK EXCAVATION
20	B-10 EMBANKMENT ON SLOPE
21	D-2 HEADWALLS AND UNDERDRAIN
22	D-3 JUTE MATTING
23	D-4 SPECIAL ELBOWS
24	D-8 R.C. DROP INLETS
25	D-10 DROP INLET TOPS
26	D-11 D.I. GRATE, TYPE A
27	D-13 R.C. CATCH BASIN
28	D-16 PRECAST CURB D.I., D.I. GRATE TYPE B
29	E-31 CONSTRUCTION IDENTIFICATION SIGNS
30	F-1 PROPERTY LINE FENCE
31	G-1 STANDARD STEEL BEAM GUARD RAIL
32	G-3a THREE CABLE GUARD RAIL END ANCHORAGE
33	G-4 PLANK GUARD RAIL, WOOD MARKER POSTS
34	J-1 BOUNDARY MARKERS
35	J-4 FIELD OFFICE
36	BLANK
37	SCB-30-12
38-39	DETAILS BRIDGE I 91 OVER U.S. 5 AT 3518+11.0 (BR. 100-112)
40-41	DETAILS BRIDGE I 91 OVER OTTAUQUICHEE RIVER AT 3529+95.0 (BR. 200-222)
42	SB-R3-64
43-44	SB-R1-64 (SHEETS 1 AND 2)
45-46	SCB-D1, D2, D4, D6-62
47-48	BLANK
49-50	GROSS SECTIONS (INTERSTATE)
51-52	EXTENDED GROSS SECTIONS 3520+00 TO 3527+80

*Added in Final
Struct. Steel Details with Extd Weights
1. Earthwork Sheet*

STATE OF VERMONT
DEPARTMENT OF HIGHWAYS
PROPOSED IMPROVEMENT
TOWNS OF HARTLAND-HARTFORD
COUNTY OF WINDSOR
INTERSTATE ROUTE 91
BELLOWS FALLS-WHITE RIVER JCT. ROAD

CONTRACT NO. 4
BEGINNING AT A POINT 1.363 MILES SOUTHERLY OF THE HARTLAND-HARTFORD TOWN LINE AND EXTENDING NORTHERLY 0.473 MILES
LENGTH OF ROADWAY 2010.37 FEET = 0.380 MILES
LENGTH OF BRIDGES 489.63 FEET = 0.093 MILE
LENGTH OF CONTRACT 2500.00 FEET = 0.473 MILES

STAGE I CONSTRUCTION

ADT 1965	3500
ADT 1985	8060
DHV 1985	1160
D	5 1/2 %
T	7 %
V	60 MPH

PROJECT NAME & NUMBER STAGE I & 2-2 SPAN WELDED PLATE
HARTLAND-HARTFORD I 91-(22) GRADING & DRAINAGE GIRDER BRIDGES
RECORD PLANS
MATERIALS

SUBBASE OF GRAVEL - SMITH LEHEUREUX GRAVEL PIT - HARTLAND, VT.
SUBBASE OF CRUSHED ROCK - SMITH LEHEUREUX QUARRY (PERINI CRUSHER) - HARTLAND, VT.
CONCRETE CLASS AA B B - MILLER READY MIX INC. - WHITE RIVER JCT. VT. & V. LEDARD, N. Y.
REINFORCING STEEL & STEEL PILING - REPLEHEN STEEL CORP. - ALBANY, N. Y.
METAL CULVERT PIPE - NEW ENGLAND METAL CULVERT CORP. - WHITE RIVER JUNCTION, VT.
REINFORCED CONCRETE W.P.P., GUARD RAIL ITEMS, PROPERTY LINE FENCE & EROSION CONTROL ITEMS - S. T. CRISWOLD & CO., INC. - WILLISTON, VT.
STRUCTURAL STEEL - A. LEO NASH STEEL CO. - PITTSFIELD, MASS.
GRANITE BRIDGE CURB - E. L. SMITH WHETMORE & MORSE QUARRIES - BARRE, VT.
BRIDGE PILING - WARD WELLS CO., INC. - NATICK, MASS.
BRIDGE PAINT - AMSTERDAM COLOR WORKS INC. - NEW YORK, N. Y.

CONTRACTOR - MILLER CONSTRUCTION INC.
WINDSOR, VT.
CHIEF RESIDENT ENGINEER - ROY E. NICHOLSEN
RES. ENG. - JAMES A. MCCREA & GLEASON W. AYERS
INSPECTORS - ALLEN J. NEWTON, JOSHUA PAVIS & ALLAN COUCH
RECORD PLANS - GLEASON W. AYERS
CONTRACT DATED - MARCH 1, 1965.
STARTED - MARCH 11, 1965.
COMPLETED - AUGUST 26, 1966.
ACCEPTED - AUGUST 3, 1966.

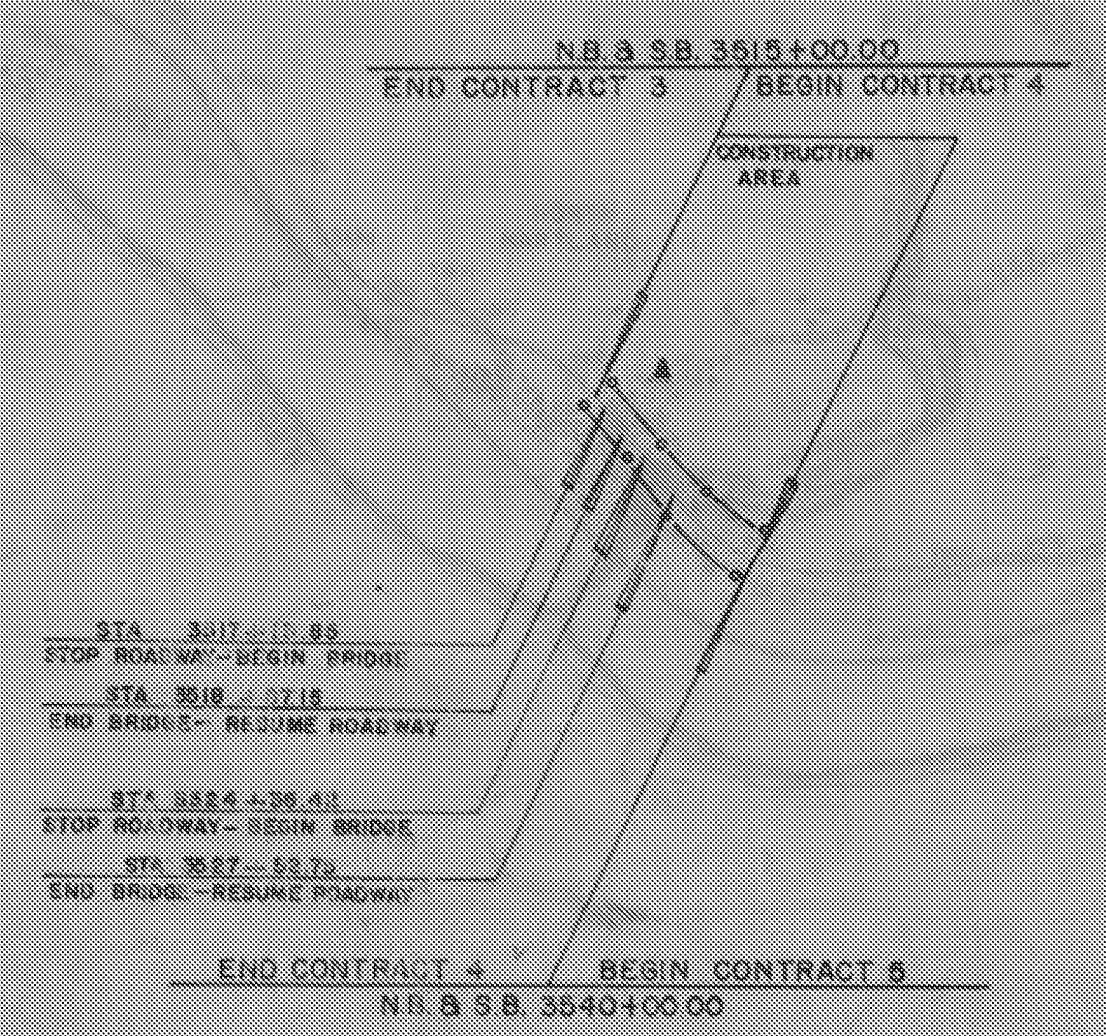
57

HARTLAND-HARTFORD
PROJECT I 91-(22), C-4, S-1
TYPE GRADING & DRAINAGE
FOUR STAGE 2 SEE I 91-(13)
CONTRACTOR MILLER CONSTRUCTION INC.
WINDSOR, VT.
YEAR 1965-66
Location Beginning at a point 1.363 miles southerly of the Hartland-Hartford
Town Line and extending northerly 0.473 miles.
Box 251 3883

HARTLAND-HARTFORD I 91-(22) C-4, S-1
CONTRACTOR - MILLER CONSTRUCTION INC.
WINDSOR, VT.
CONS. IT. COMPLETED - AUGUST 26, 1966.
RECORD PLANS - GLEASON W. AYERS.

CONSTRUCTION IDENTIFICATION SIGNS

SCALE IN FEET



WINDSOR-HARTLAND
IM MEMB(14)
SHEET 29 OF 39
BRIDGE 39N&S
FOR REFERENCE ONLY

APPROVED *R.H. Currier*
ASST. CHIEF ENGINEER
DATE *9/26/69*

J.P. Perkins DISTRICT 11/21/63
E.H. McKinney 11/10/63
Sam Brown 11/14/63
J.S. Chase 11/7/63
L.M. Lane 11/9/63
J.P. Bishop 11/11/63