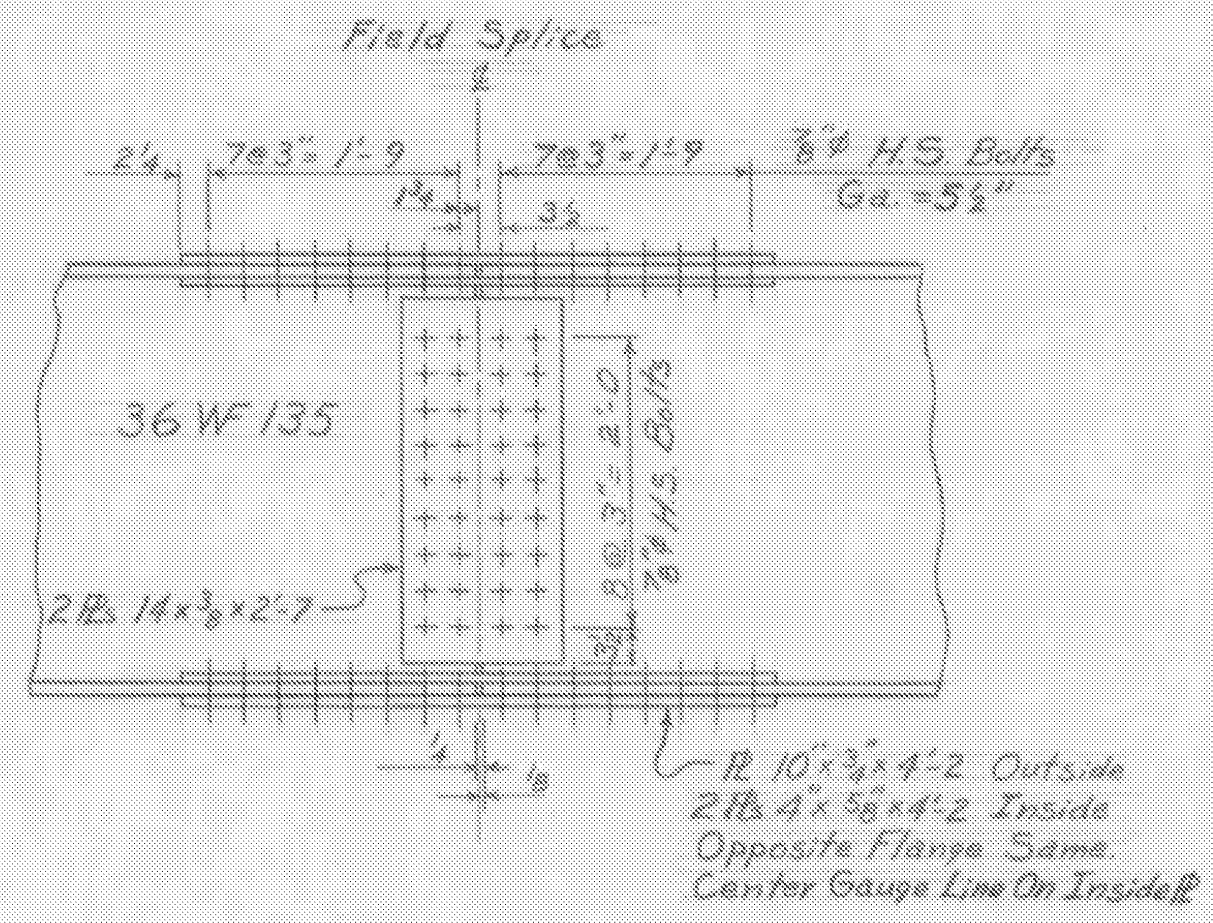
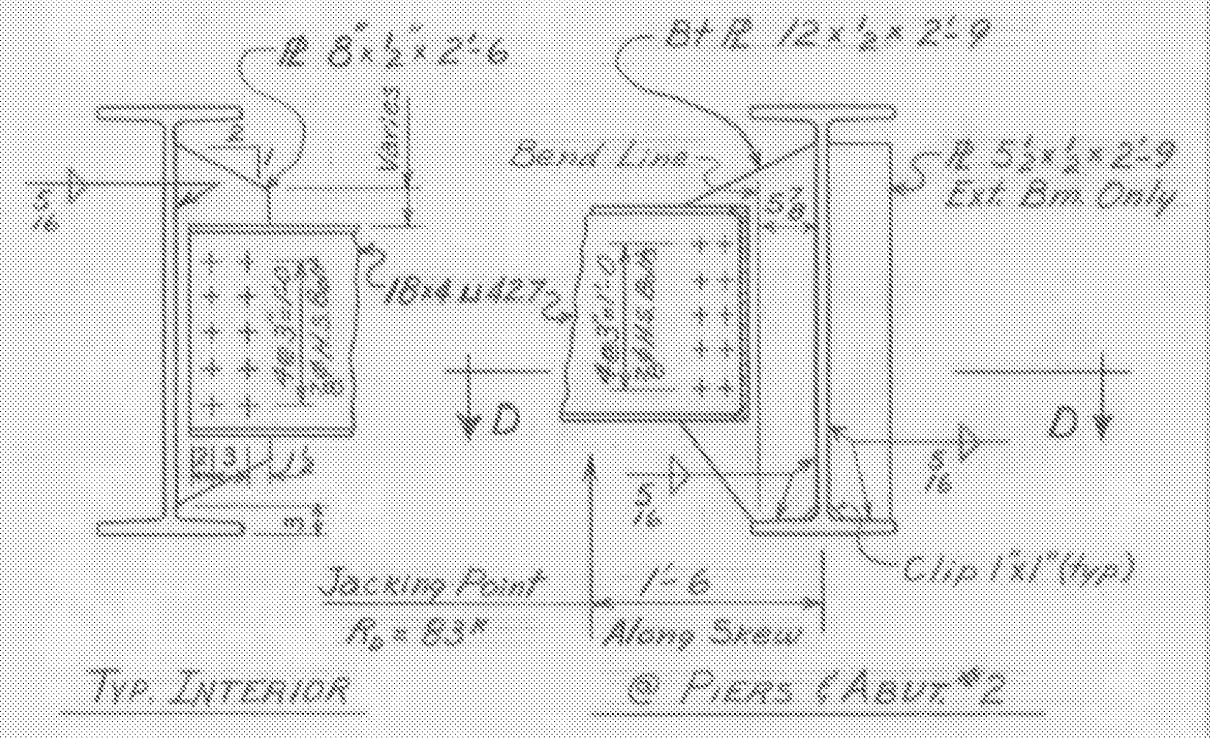


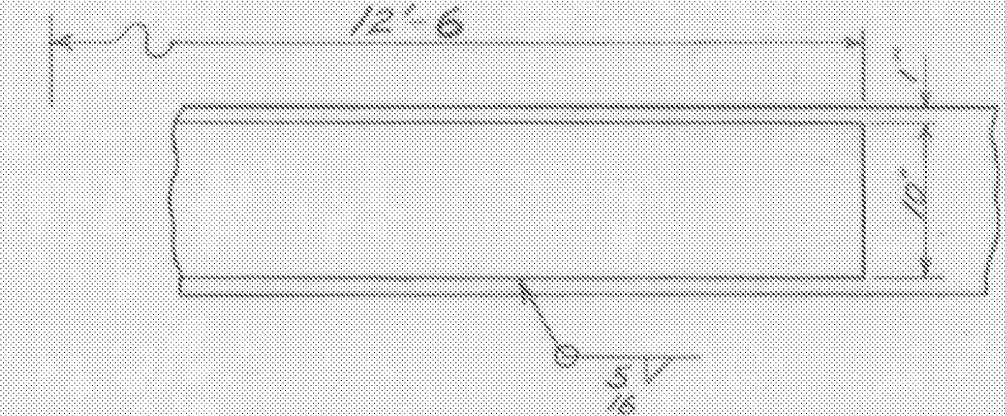
**FRAMING PLAN**  
Scale 3/4"=1'-0"  
Details Not Shown Are Same As Opposite Bridge



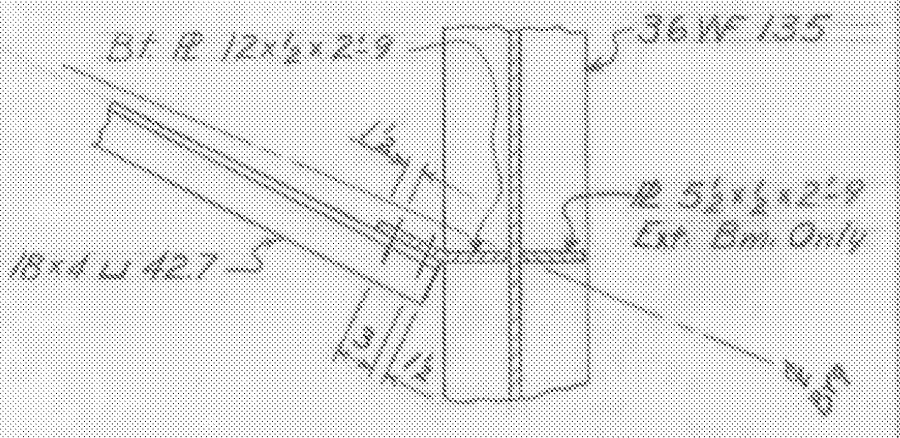
**FIELD SPLICE**  
Scale 3/4"=1'-0"



**DIAPHRAGM DETAILS**  
Scale 3/4"=1'-0"



**COVER PLATE DETAILS**  
Scale 1"=1'-0"  
Top & Bottom Plates are Same



**SECTION D-D**  
Scale 3/4"=1'-0"

**NOTES**

- Materials: All structural steel not otherwise specified shall conform to the specification for Structural Steel A.S.T.M. Designation A36-62T. Rollers for expansion bearings shall be cold finished carbon steel conforming to A.S.T.M. Designation A108 (A.I.S.I. Grade 1045). Roller shall be turned and finished as indicated. Roller shall be preheated in furnace to a temperature appropriate to the type of electrode before welding, held at this temperature until welding is completed, and allowed to cool slowly. Finish machining shall be done subsequent to welding. Min. allow. Y.R. 50,000 psi. Exp. Base plates and sole plates shall be Structural Nickel Steel, A.S.T.M. Designation A6. Finished surfaces shall be plane so as to afford full contact with the roller.
- Dimensions shown are measured horizontally or vertically and are for 68°F.
- No camber is specified. Fabricate end spans with mill camber down and center section with mill camber up. Final roadway grade and haunch depth is to be determined by the Engineer following erection of the structural steel and the determination of the stringer profiles.
- For additional notes see Standard Structures Sheet SCB-D1-62.

Revision 1 Date 2-25-65 by RPG dd RND  
Increased finish grade elevations by 0.25 ft. on this sheet only.

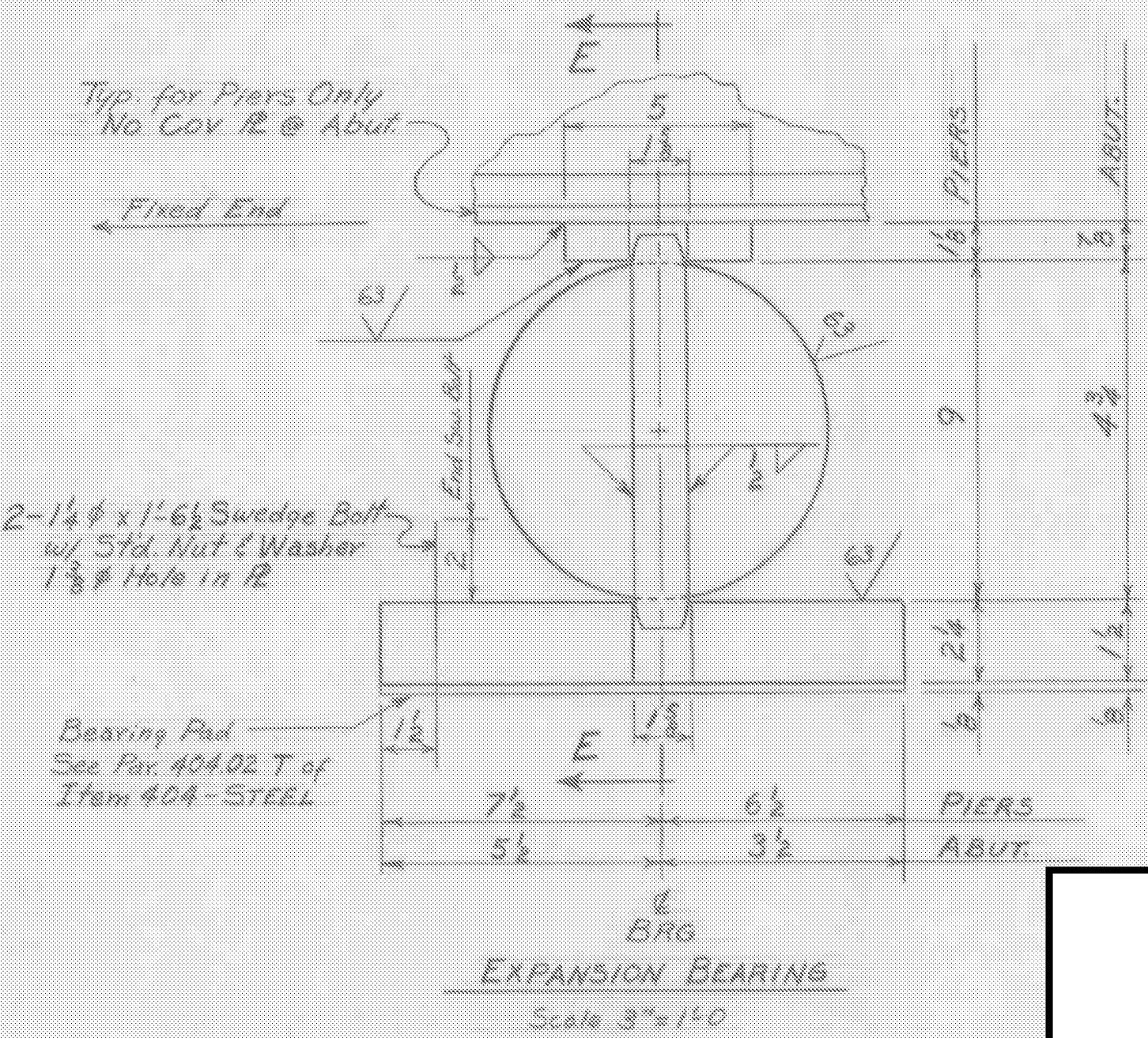
**STATE OF VERMONT**  
DEPARTMENT OF HIGHWAYS

**WEATHERSFIELD-WINDSOR-HARTLAND**  
ROUTE NO. 191 STA. 3043+80

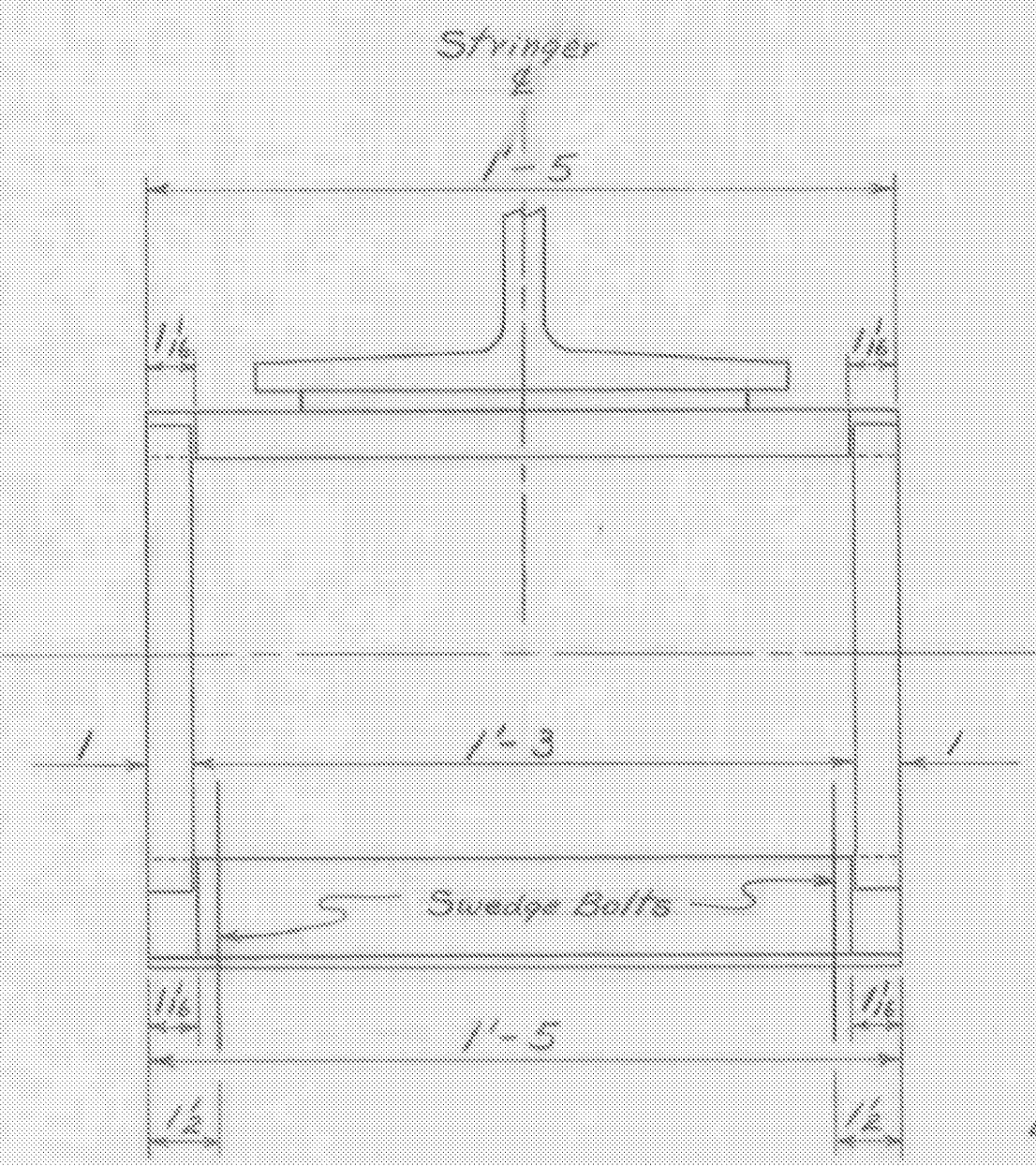
**FRAMING PLAN & EXP. BRG. DETAILS**  
INTERSTATE OVER WINDSOR T.R. #5

SCALE As Noted  
SURVEYED BY  
DRAWN BY RLM 5-2-63 CHECKED BY RPG  
PROJECT NO. I91-1(21) Cont. 3  
SHEET 45 OF 166

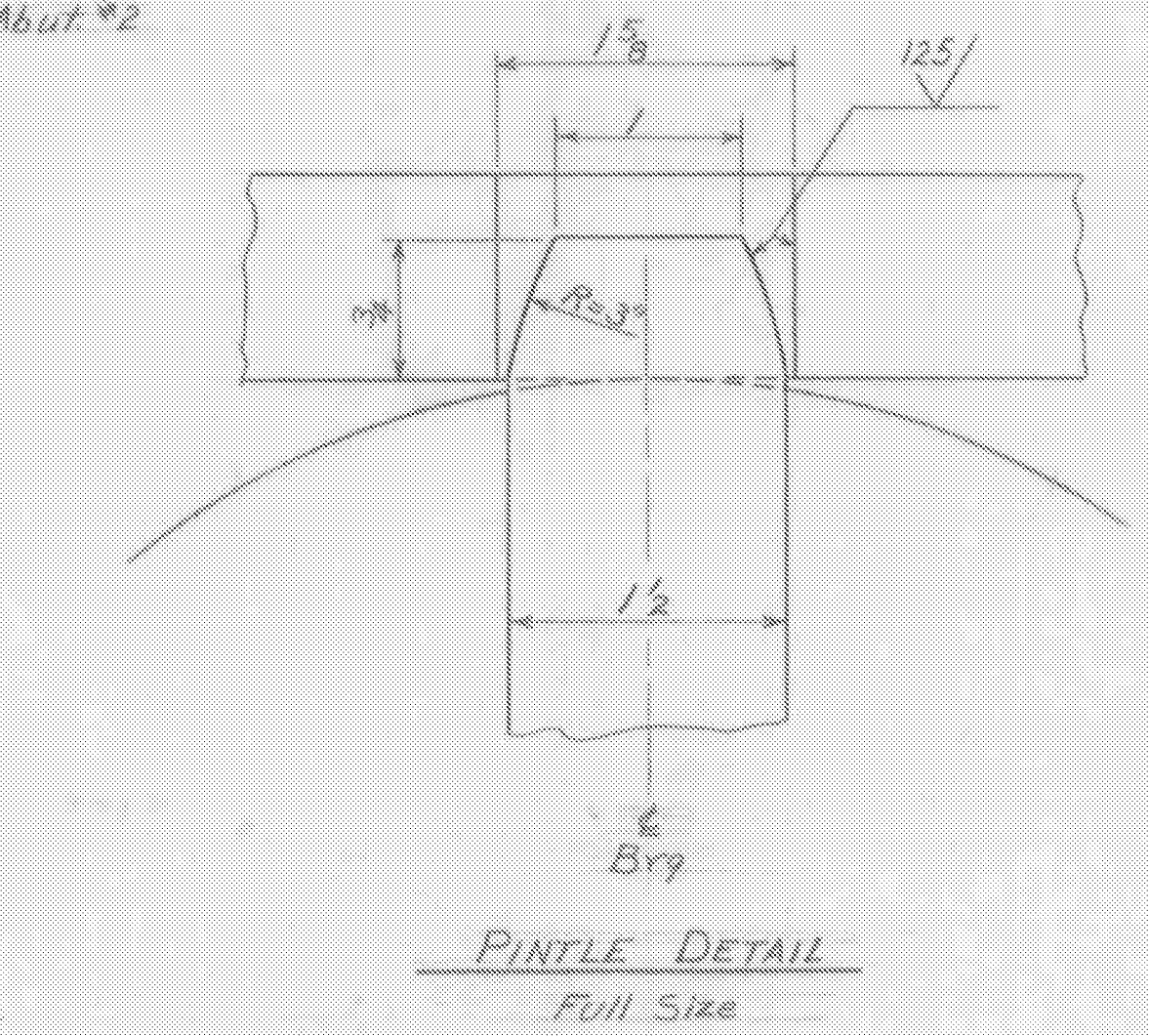
ITEM NO.	ITEM	UNIT	N.B.	S.B.	TOTAL	FINAL
106-A	CHAN. EXCAV. OF EARTH	C.Y.				
106-B	CHAN. EXCAV. OF ROCK	C.Y.				
106-C	UNCLASS. CHAN. EXCAV.	C.Y.				
107	STRUCT. EXCAV.	C.Y.				
401-B	CONC. CLASS B (MOD.)	C.Y.				
402	REINF. STEEL	LBS.				
407	ASPHALTIC-ASS. COATING	S.Y.				
502-B	TREATED TIMBER PILING	L.F.				
503	SPLICES FOR STEEL PILING	EA.				
504	STEEL PILING	L.F.				
502-A	UNTREATED TIMBER PILING	L.F.				
404-A	Structural Steel	LBS.	117,000	147,900	264,900	296,011



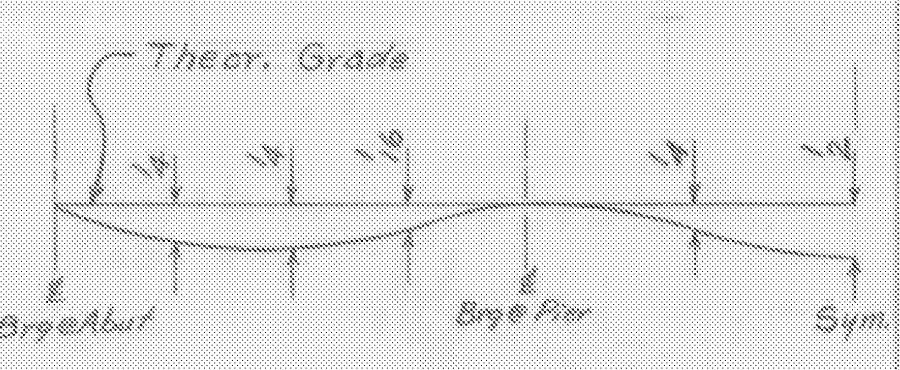
**EXPANSION BEARING**  
Scale 3"=1'-0"



**SECTION E-E**  
Scale 3"=1'-0"



**PINTLE DETAIL**  
Full Size



**DEAD LOAD DEFLECTION**  
Not to Scale

Dimensions shown are for expected deflection at quarter points due to full dead load.

**WINDSOR-HARTLAND**  
IM MEMB(14)  
**SHEET 22 OF 39**  
**BRIDGE 34S**  
**FOR REFERENCE ONLY**