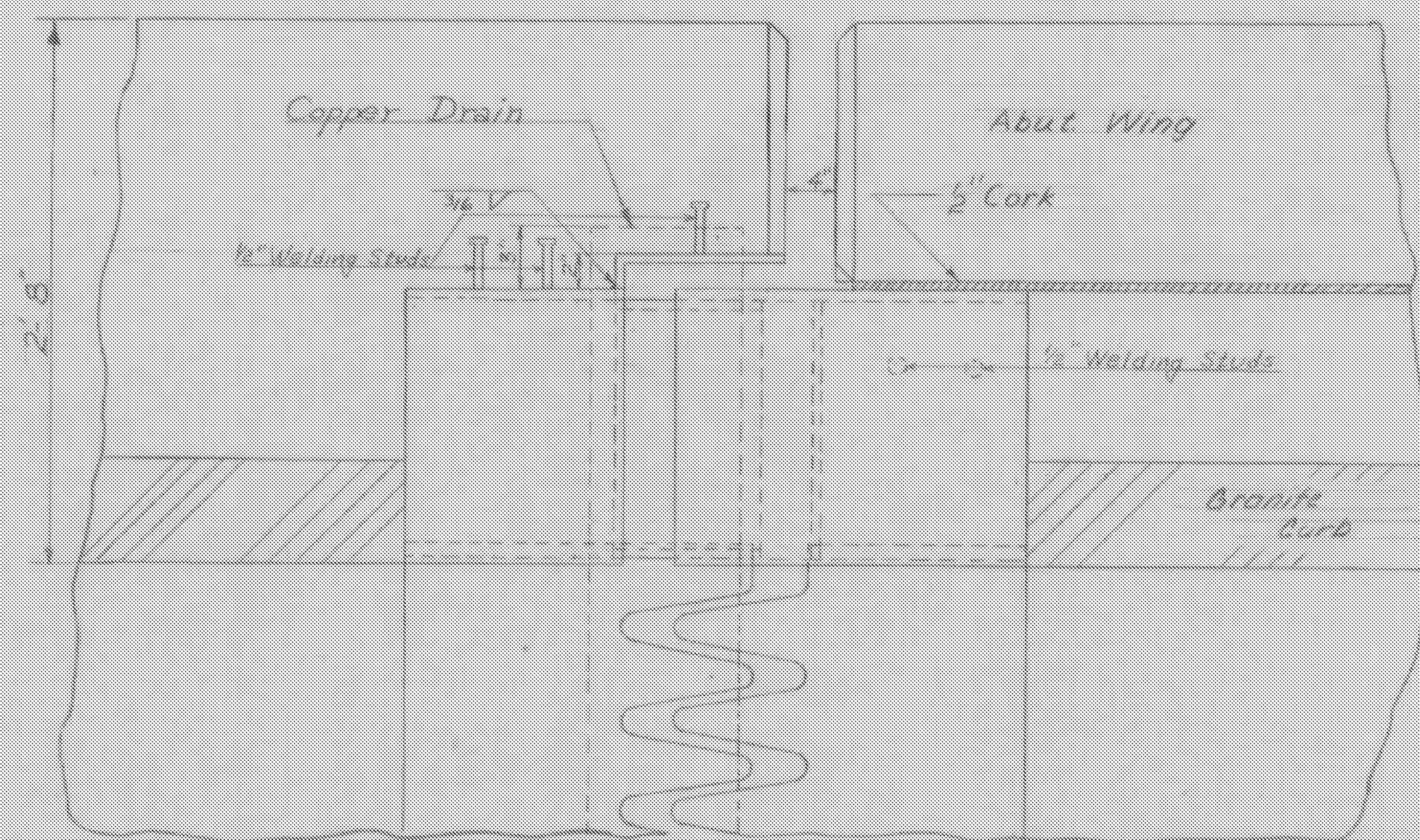
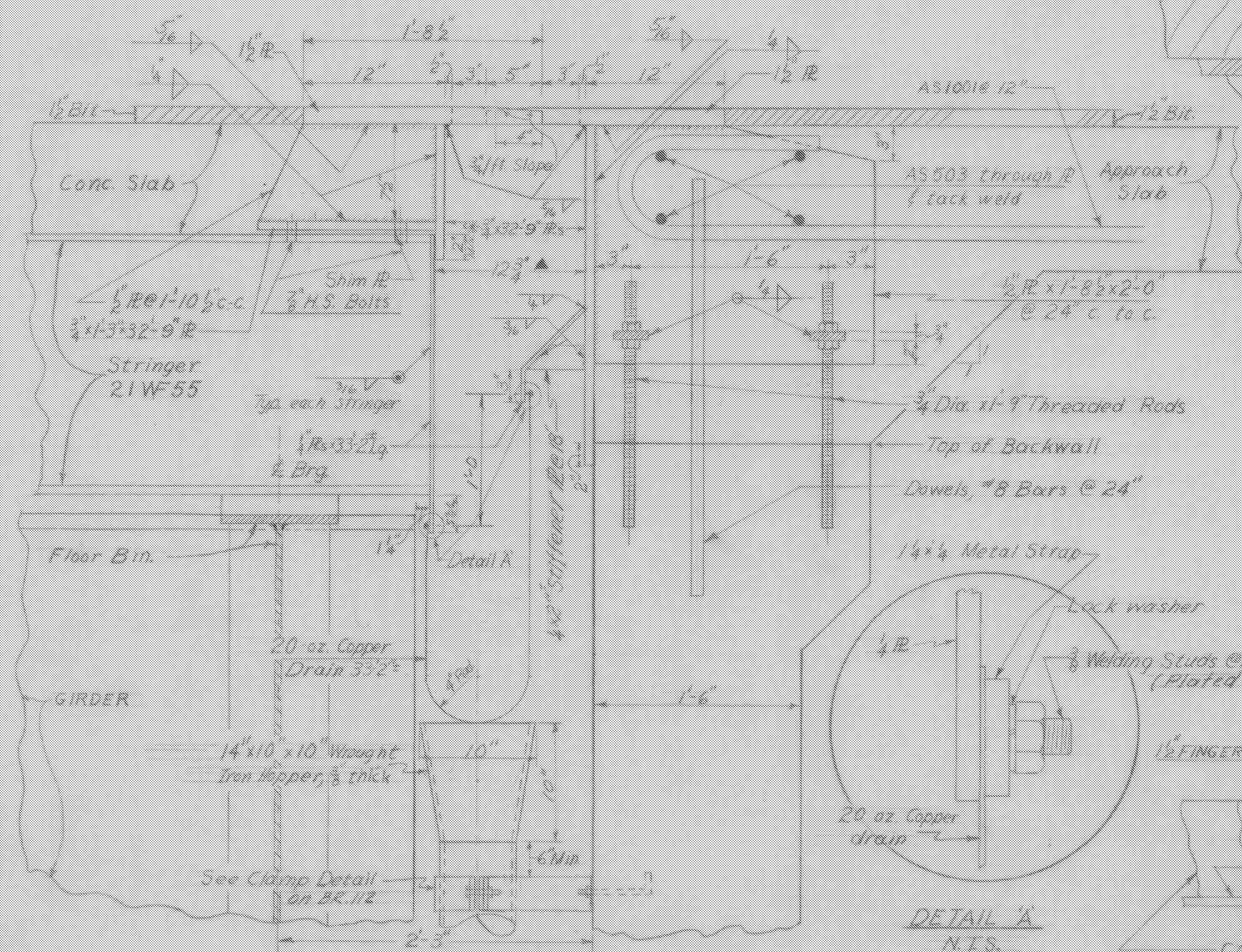


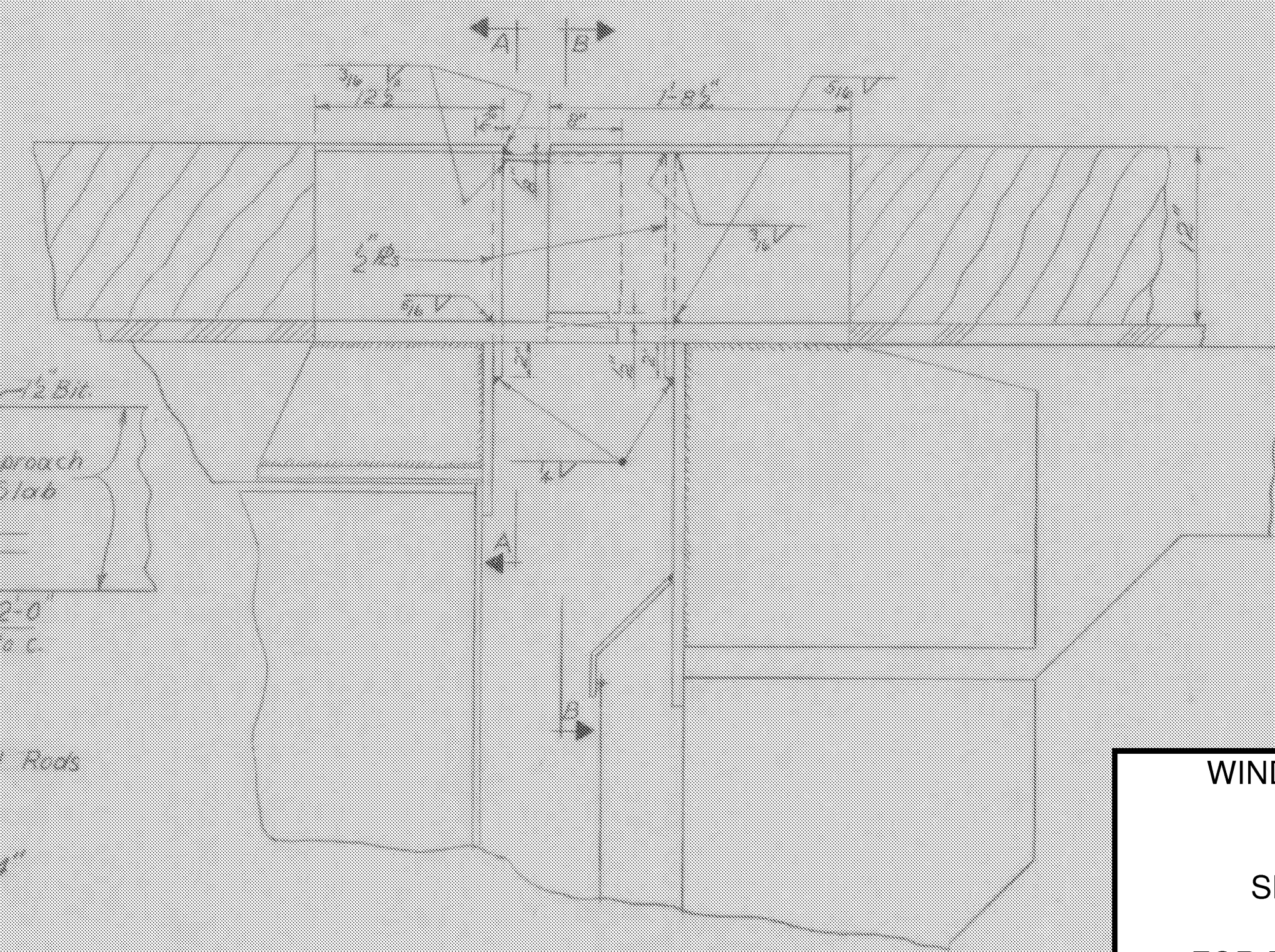
PLAN AT & OF ROADWAY



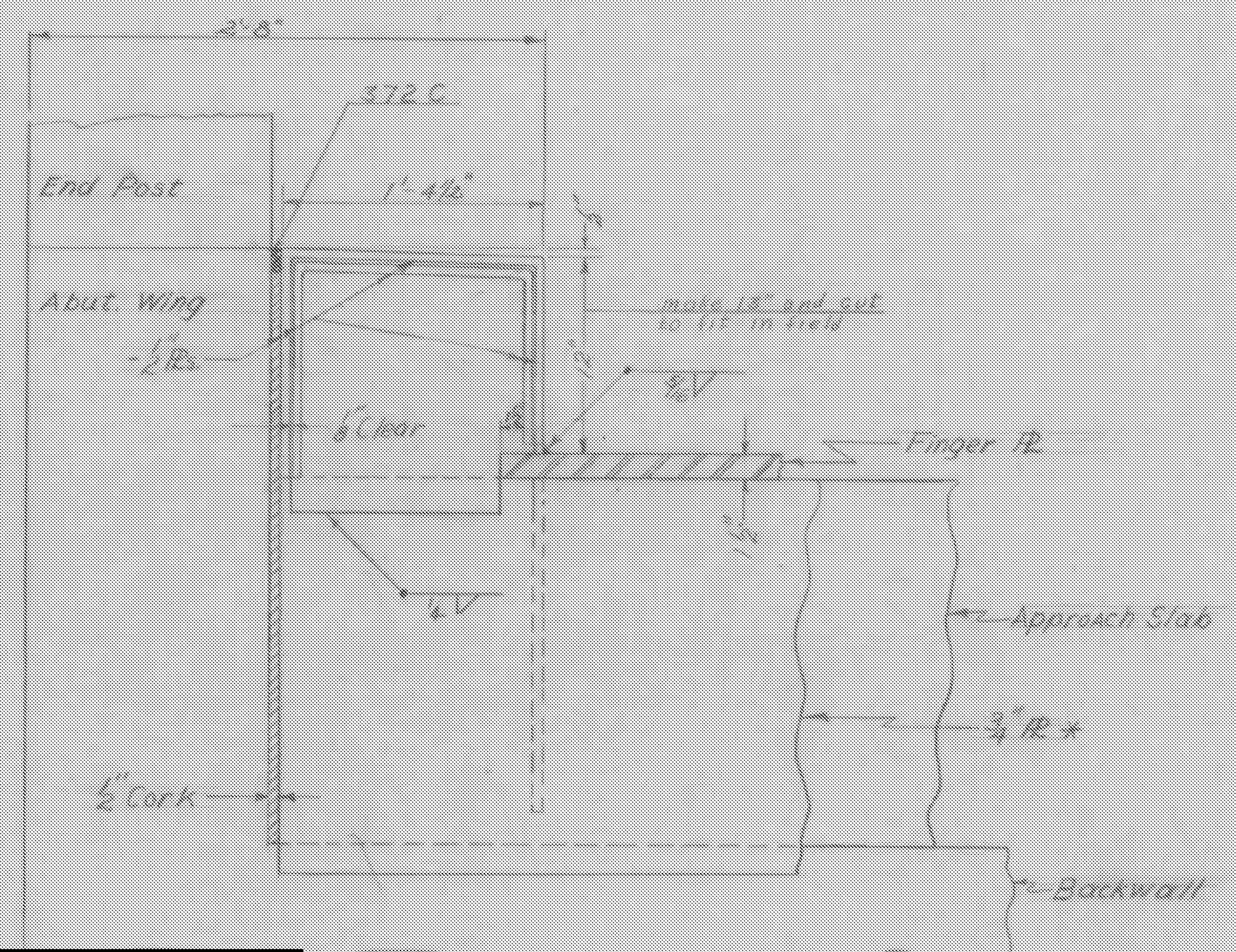
PLAN AT CURB



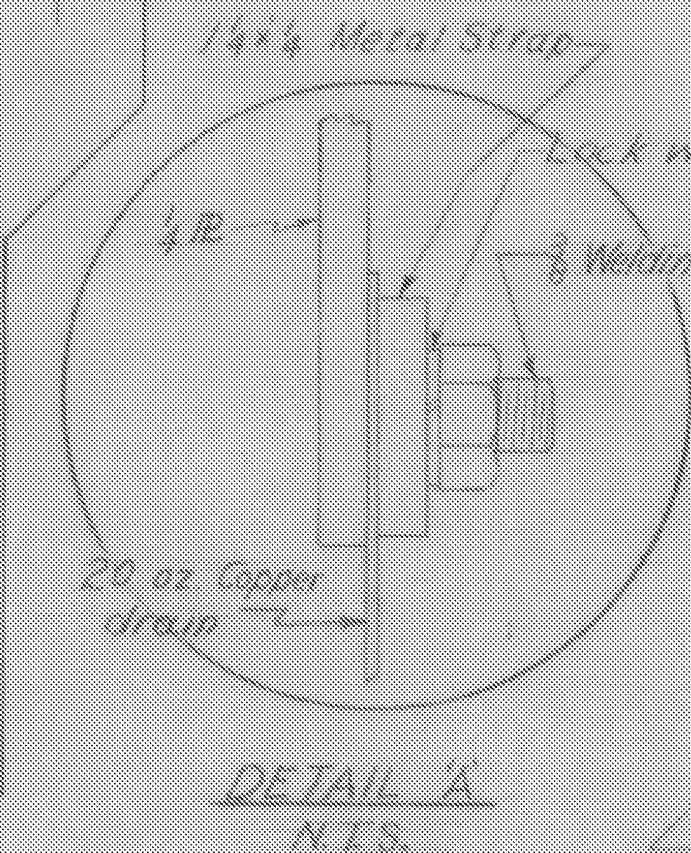
ELEVATION AT & OF ROADWAY



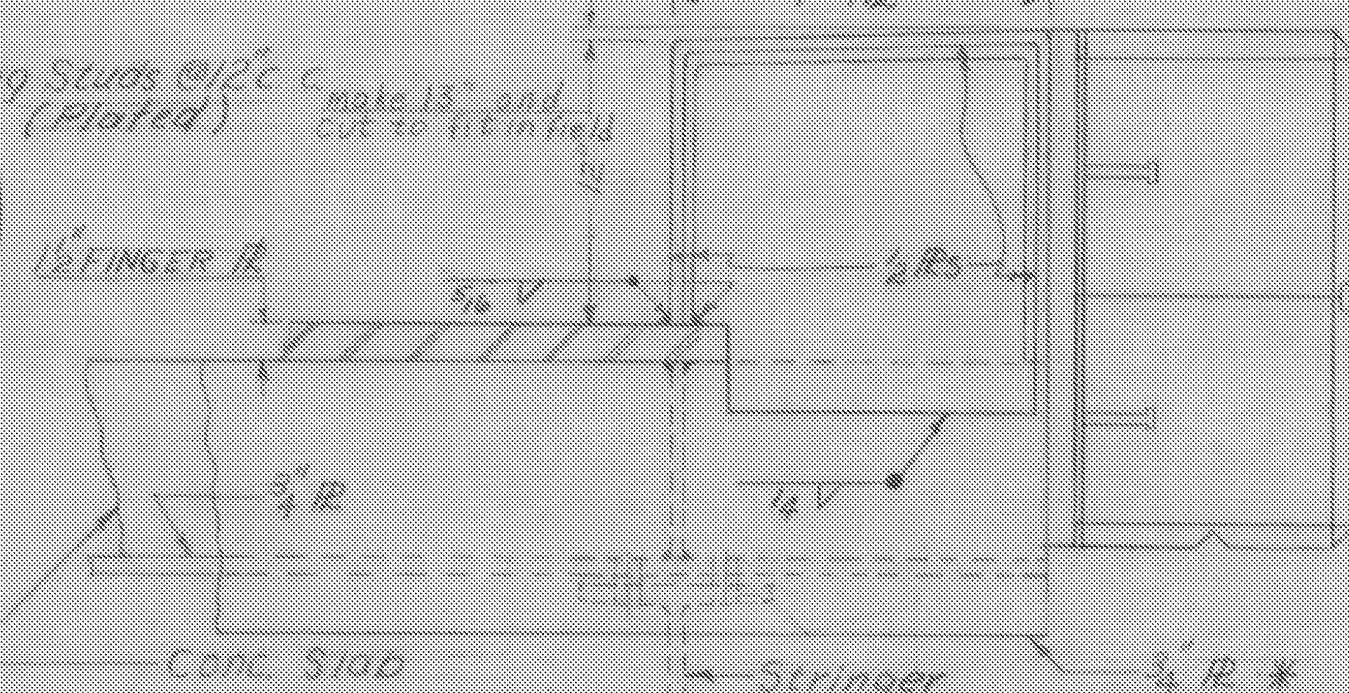
ELEVATION AT CURB



SECTION B-B



DETAIL A  
N.T.S.



SECTION A-A

NOTES:~

- 1- \* These R.S. shall conform to the parabolic crown.
- 2- For details of Finger R.S. & Drainage see Br 112 of 125
- 3- Copper drain shall have a min. slope of 3/16"/ft.
- 4- All steel shall be A242 unless otherwise noted.
- 5- All plates which are embedded completely in concrete may be A36 steel.
- 6- Clear dimensions indicated are for 60" F.

WINDSOR-HARTLAND  
IM MEMB(14)  
SHEET 17 OF 39  
BRIDGE 33S  
FOR REFERENCE ONLY

BR. 111 OF 125

ITEM NO.	ITEM	UNIT	NET	OVERRUN	TOTAL	FINAL
106-A	CHAN. EXCAV. OF EARTH	C.Y.				
106-B	CHAN. EXCAV. OF ROCK	C.Y.				
106-C	UNCLASS. CHAN. EXCAV.	C.Y.				
197	STRUCT. EXCAV.	C.Y.				
401-B	CONC. CLASS II (MOD.)	C.Y.				
402	REINF. STEEL	LBS.				
407	ASPHALTIC ASP. COATING	S.Y.				
502-B	TREATED TIMBER PILING	L.F.				
503	SPLICERS FOR STEEL PILING	EA.				
904	STEEL PILING	L.F.				
902-A	UNTREATED TIMBER PILING	L.F.				

STATE OF VERMONT  
DEPARTMENT OF HIGHWAYS  
WEATHERSFIELD-WINDSOR-HARTLAND  
TOWN OF  
ROAD NO. I-91 BRIDGE NO.  
I-91 OVER Rte 44 & MILL BROOK  
EXPANSION DAM DETAILS  
SCALE 1/2" = 1'-0"  
SURVEYED BY  
DRAWN BY: [Signature] CHECKED BY: AGC  
PROJECT NO. I-91-1(21) Cont. 5-30  
SHEET 21 OF 57  
Sheet 117 of 188