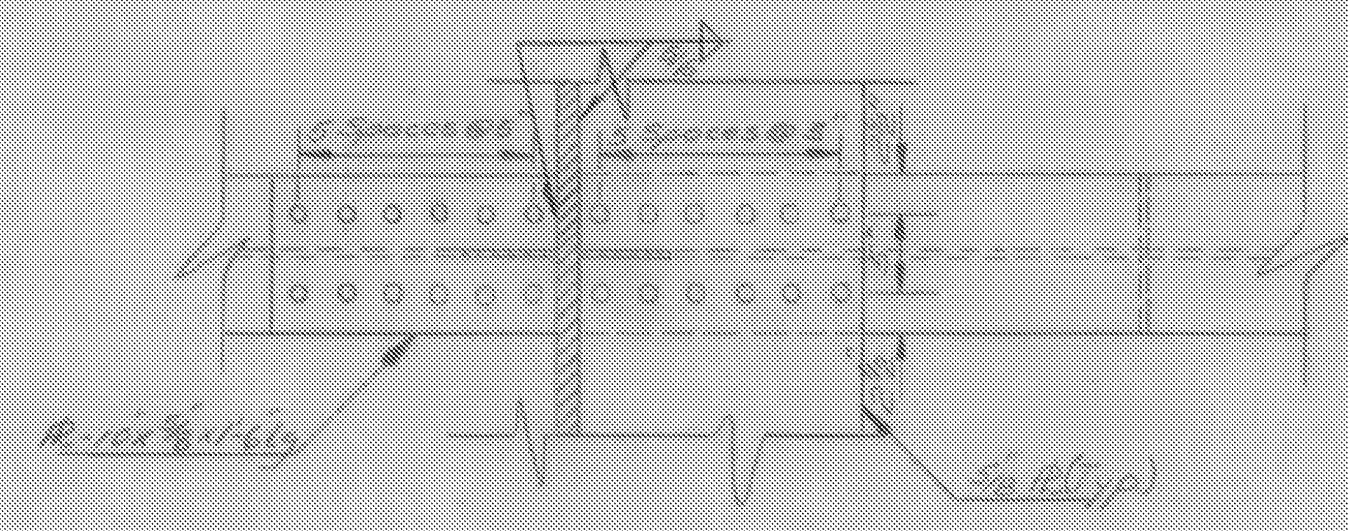
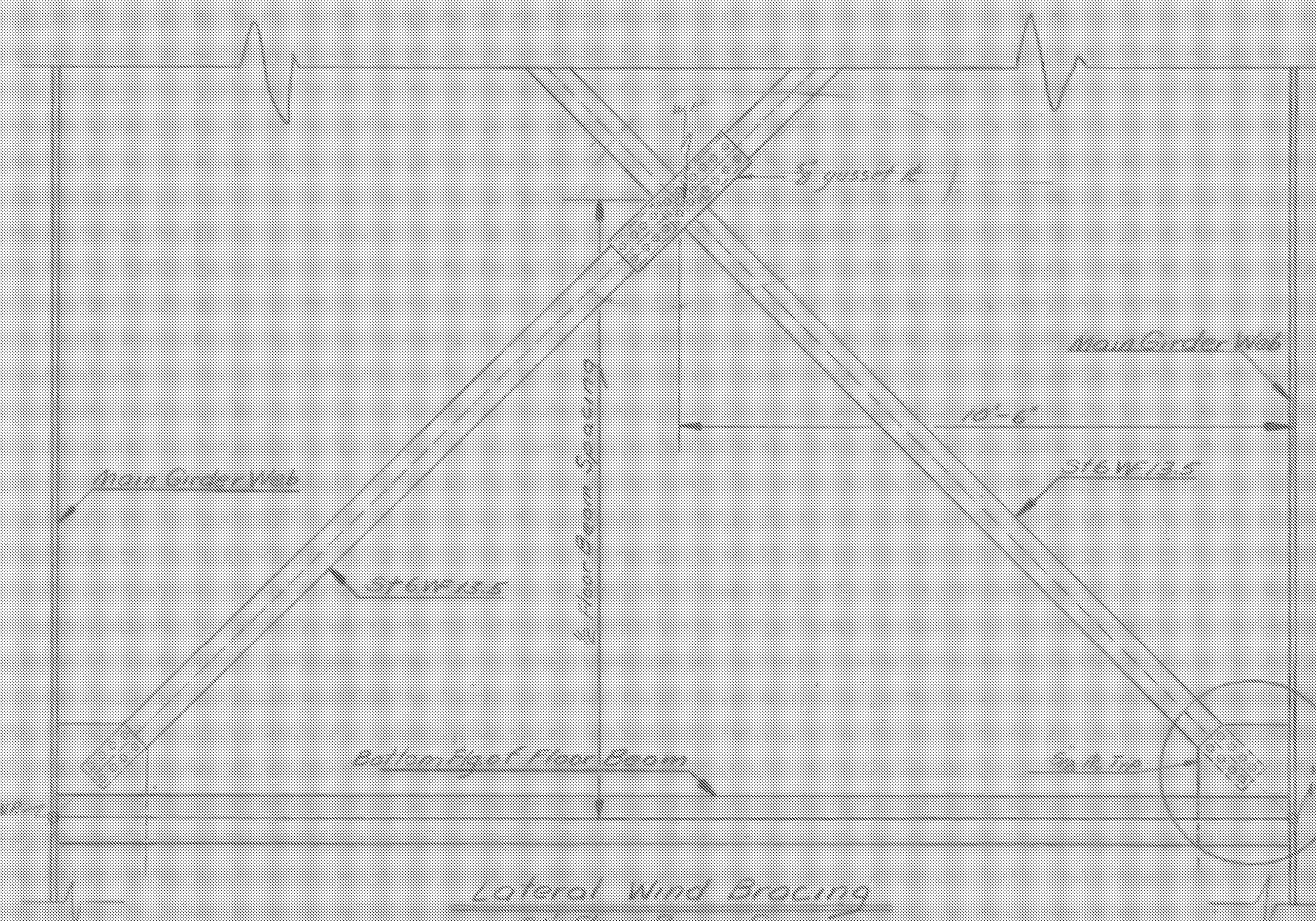


Section B-B Scale 1'-1'-0"

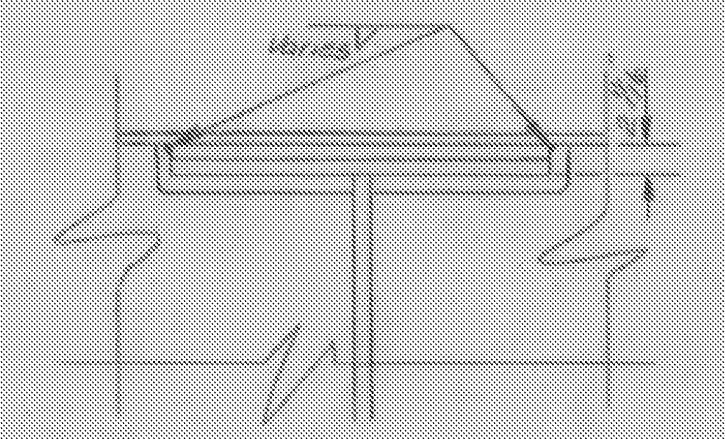
Typical Floor Beam Splice Scale 1'-1'-0"



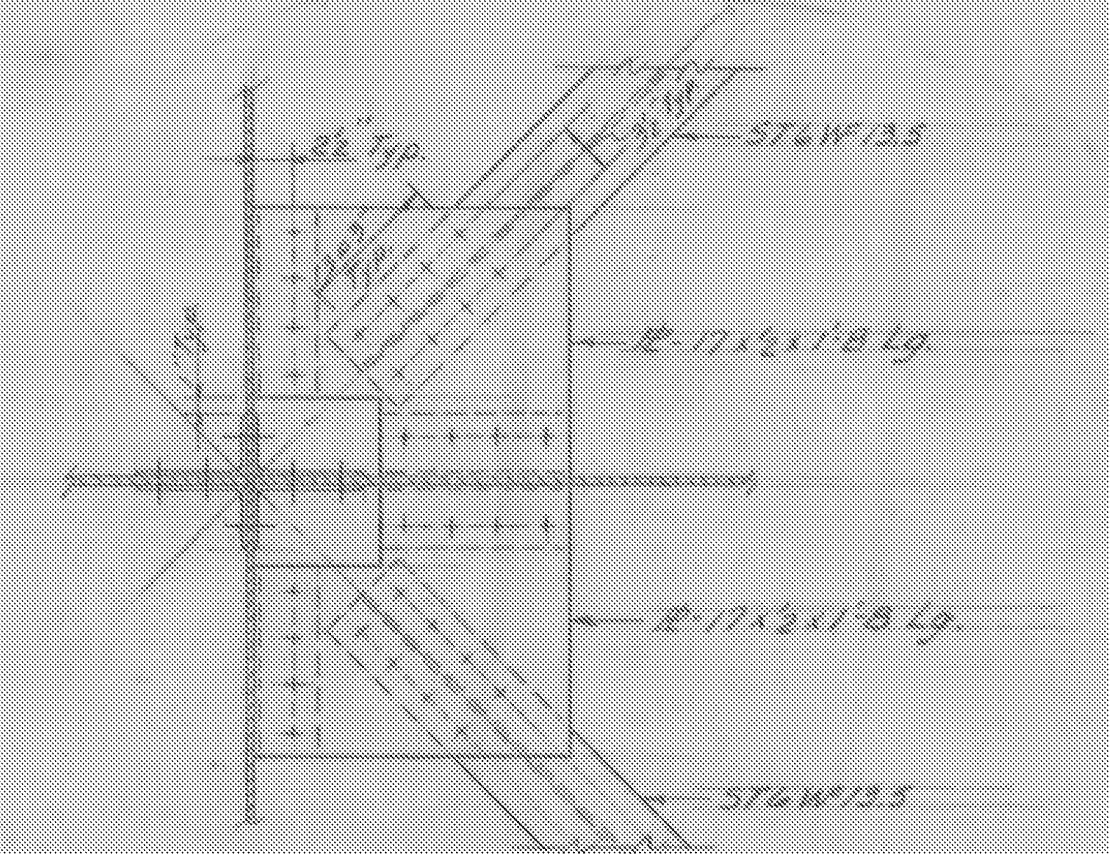
Section A-A Scale 1'-1'-0"



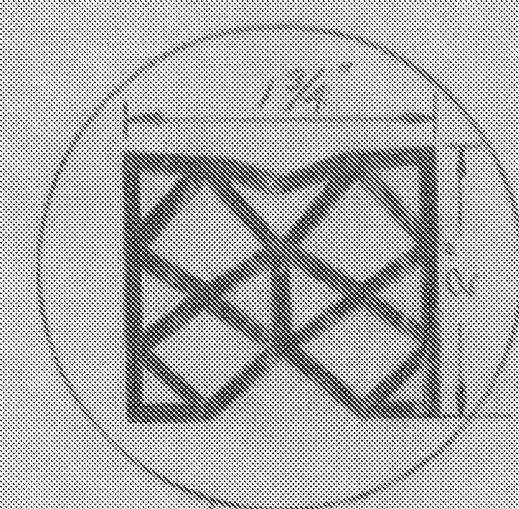
Lateral Wind Bracing
21' Floor Beam Spacing
16' Floor Beam Spacing
Scale 1/2'-1'-0"



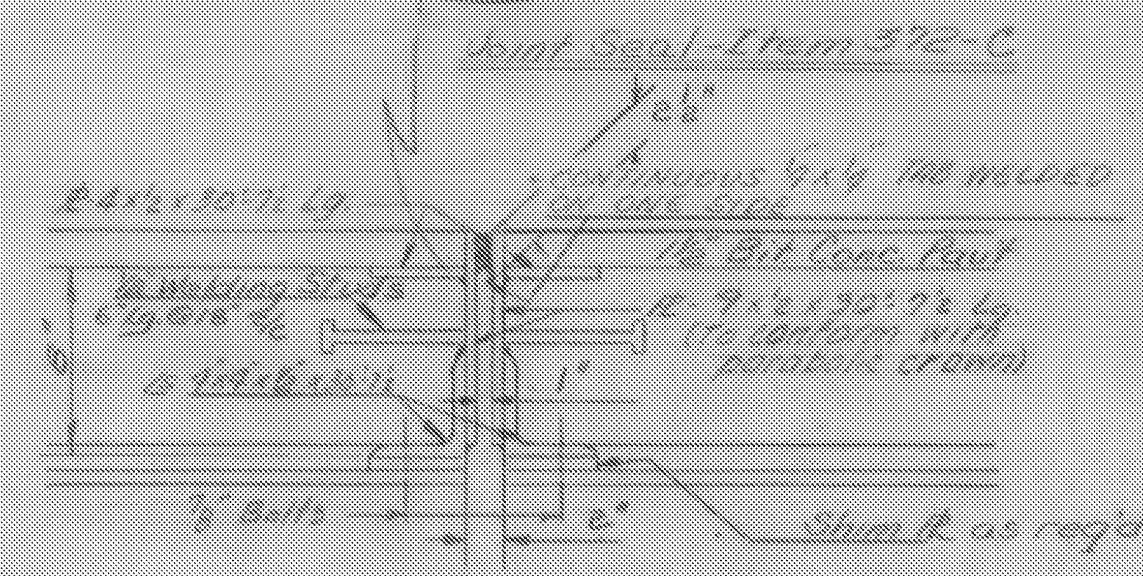
Shim Plate for Floor Beams
except at Pier 3 & 4
Thickness varies with
girder flange size



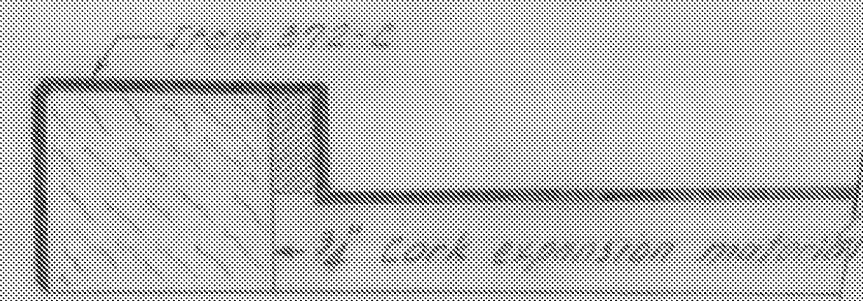
SECTION D-D
SCALE 1'-1'-0"



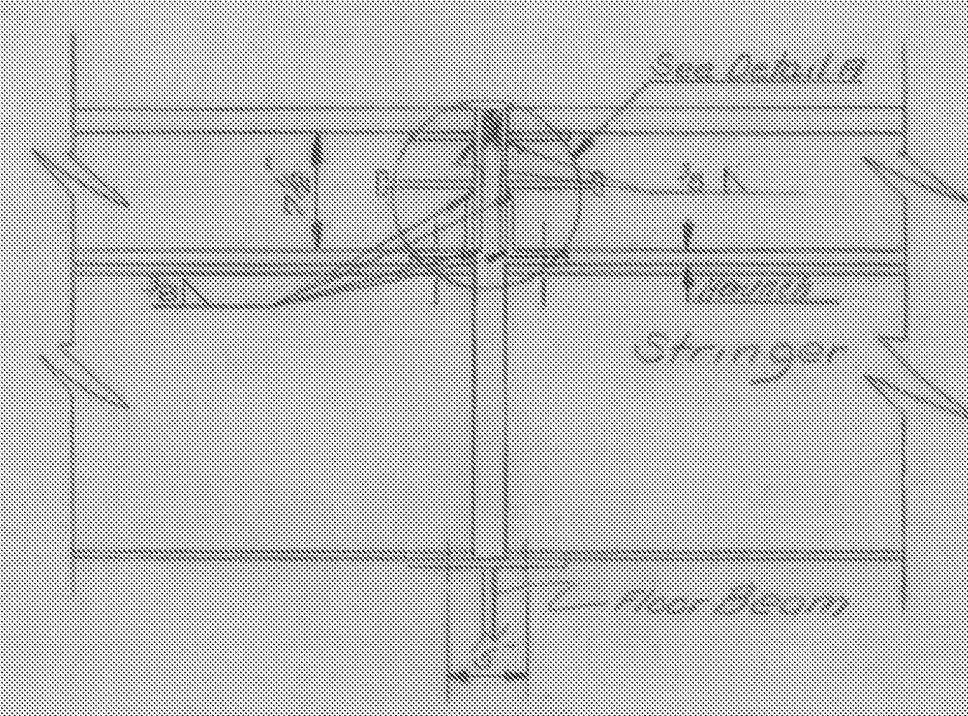
NOTE: ~
Preformed sealer shall be Neoprene rubber preformed to the indicated shape.



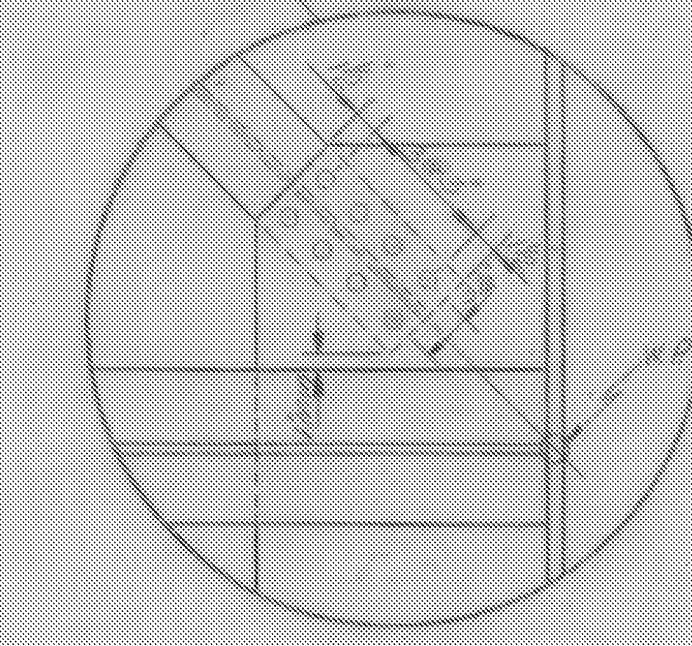
Detail A Scale 1/2'-1'-0"



NEOPRENE SEAL AT CURB
NOT TO SCALE



Detail of Deflection Joint For Location see sheet BR 107
Scale 1'-1'-0"



TYPICAL FOR SINGLE BRACING
SCALE 1'-1'-0"

WINDSOR-HARTLAND
IM MEMB(14)

SHEET 16 OF 39
BRIDGE 33S
FOR REFERENCE ONLY

BR 109 OF 125

ITEM NO.	ITEM	UNIT	TOTAL	FINAL
	CHAN EXCAV. OF EARTH	C.Y.		
	CHAN EXCAV. OF ROCK	C.Y.		
	UNCLAS. CHAN. EXCAV.	C.Y.		
	STRUCT. EXCAV.	C.Y.		
	CONC. CLASS B	C.Y.		
	REINF. STEEL	LBS.		
	ASPHALTIC ASD. COATING	S.Y.		
	TREATED TIMBER PILING	L.F.		
	SPLICES FOR STEEL PILING	EA.		
	STEEL PILING	L.F.		
	UNTREATED TIMBER PILING	L.F.		

STATE OF VERMONT
DEPARTMENT OF HIGHWAYS

WEATHERSFIELD-WINDSOR-HARTLAND
TOWN OF

ROAD NO. I-91 BRIDGE NO.
I-91 Over VT. Rt. 99 & Mill Brook
FLOOR BEAM & BRACING DETAILS
SCALE As Shown

SURVEYED BY
DRAWN BY S.H.S. CHECKED BY R.L.D.
PROJECT NO. I-91-1(1a) Cont. 5
SHEET 19 OF 57