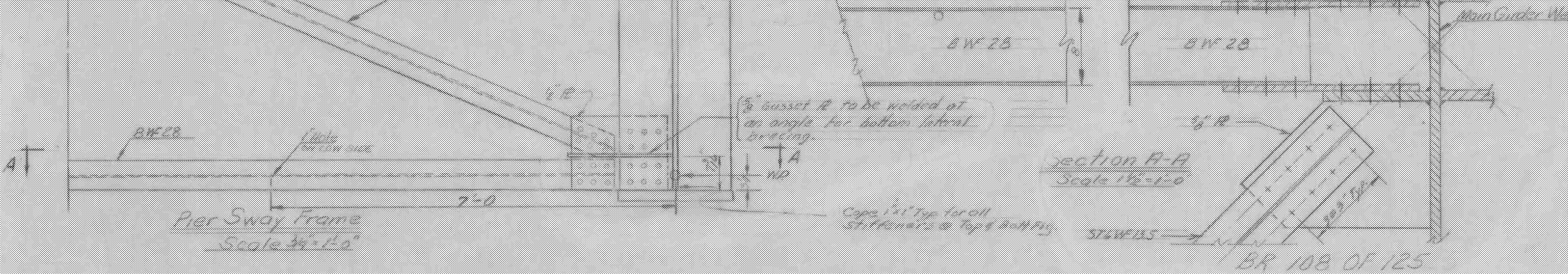
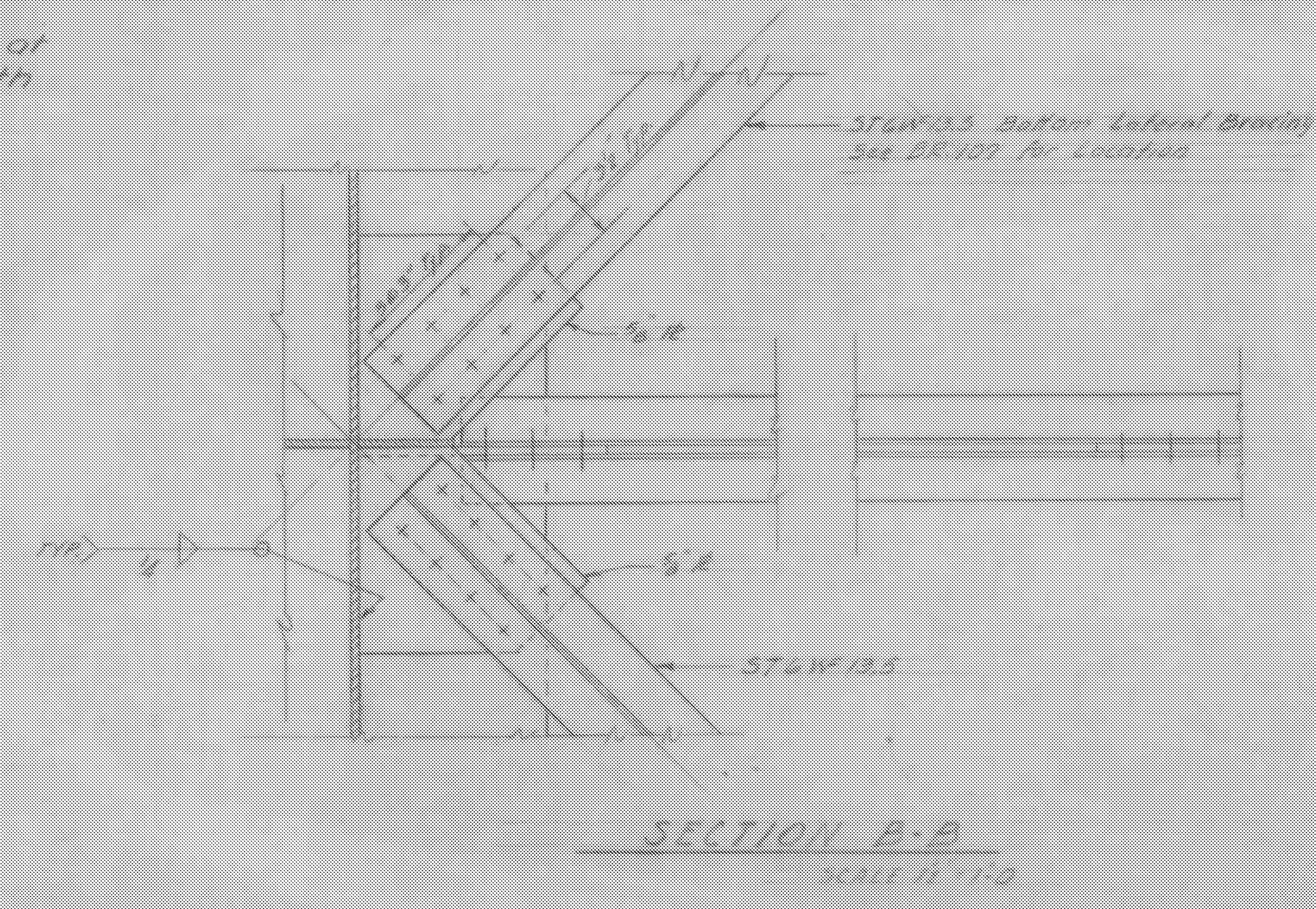


* Use same scheme at abutments but with 2 L-6" x 9" x 5/16"



WINDSOR-HARTLAND
IM MEMB(14)
SHEET 15 OF 39
BRIDGE 33S
FOR REFERENCE ONLY

ITEM NO.	ITEM	UNIT	TOTAL	FINAL
	CHGR EXCAV. OF EARTH	C.Y.		
	CHGR EXCAV. OF ROCK	C.Y.		
	UNCLASS. CHGR EXCAV.	C.Y.		
	STRUCT. EMBAY.	C.Y.		
	CONC. CLASS. B	C.Y.		
	REINF. STEEL	TONS		
	ASPHALTIC ASB. COATING	S.Y.		
	TREATED THUNDER PILING	L.F.		
	SPICES FOR STEEL PILING	EA.		
	STEEL PILING	L.F.		
	UNTREATED THUNDER PILING	L.F.		

STATE OF VERMONT
DEPARTMENT OF HIGHWAYS
WEATHERSFIELD-WINDSOR-HARTLAND
TOWN OF
ROAD NO. I 91 BRIDGE NO.
I 91 over Route 99 Mill Brook
Typical Section of Bracing Details
SCALE As shown
SURVEYED BY
DRAWN BY S.H.S. CHECKED BY R.L.O.
PROJECT NO. I-91-1(2) Cont #5
SHEET 18 OF 39