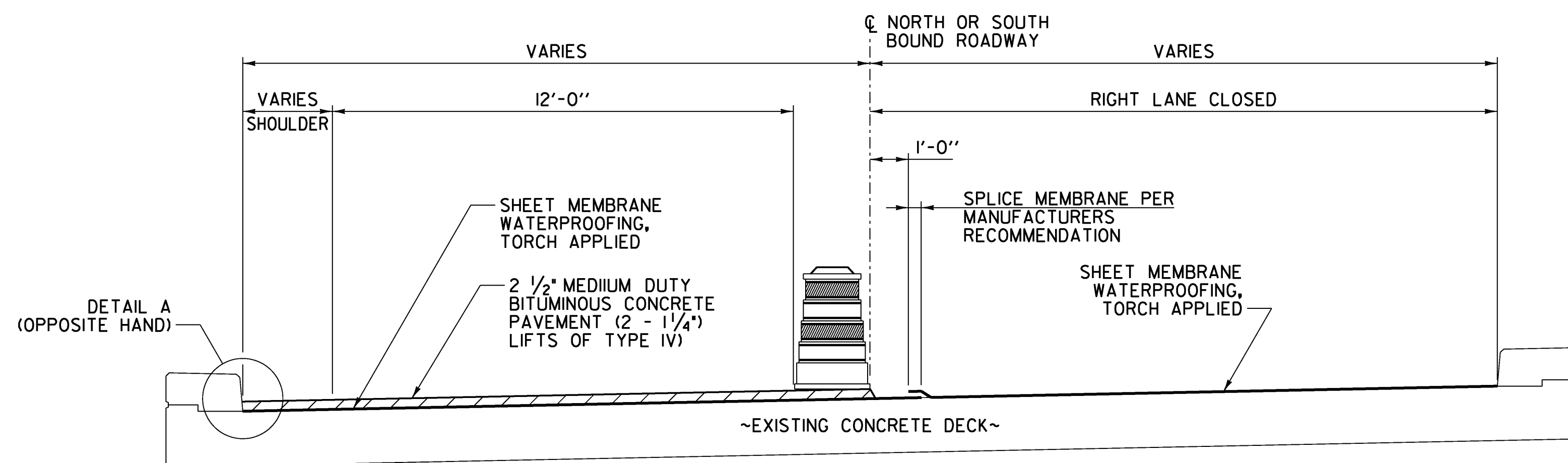


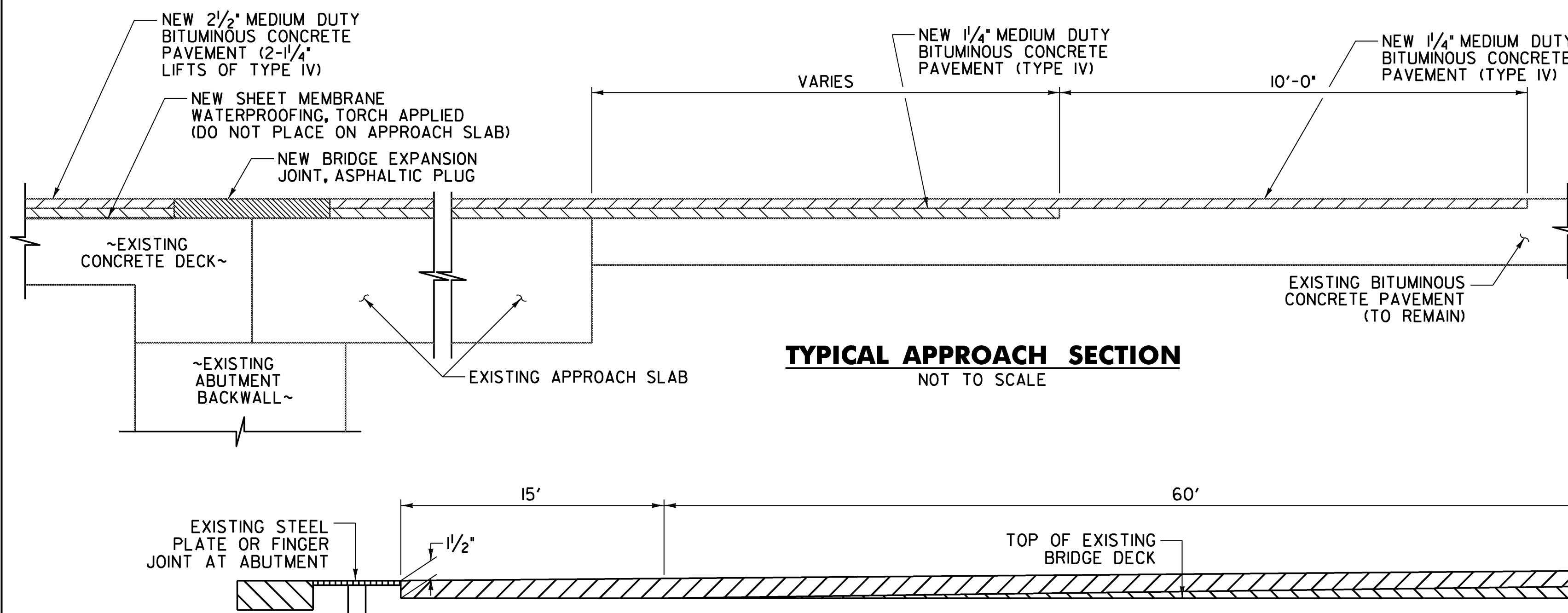
NOTE: LEFT LANE CLOSURE AND LEFT SIDE MEMBRANE SPICE SHOWN. RIGHT LANE CLOSURE AND RIGHT SIDE MEMBRANE SPICE SIMILAR. CONTRACTOR TO DETERMINE WHICH LANE THE MEMBRANE SPICE SHALL OCCUR IN UNLESS THE BRIDGE IS SUPERELEVATED. BRIDGES WITH SUPERELEVATION SHALL HAVE THE MEMBRANE PLACED AS SHOWN ON THE SUPERELEVATED DETAIL.

**MEMBRANE SPICE DETAIL - NORMAL CROWN ROADWAY**  
NOT TO SCALE

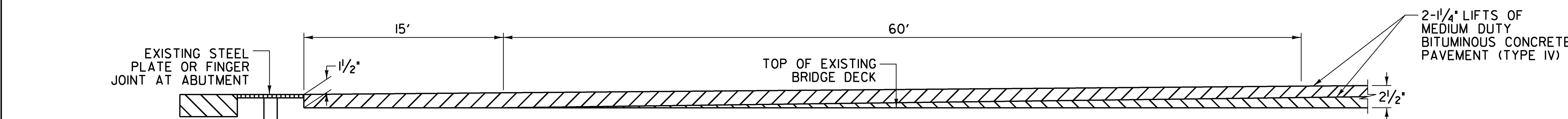


NOTE: RIGHT LANE CLOSURE AND RIGHT SIDE MEMBRANE SPICE SHOWN. LEFT LANE CLOSURE AND LEFT SIDE MEMBRANE SPICE SIMILAR. PLACEMENT OF THE MEMBRANE SHALL START AT THE LOW SIDE OF THE BRIDGE. THE SPICE SHALL BE AS SHOWN ABOVE, WITH THE HIGH SIDE OVERLAPPING THE LOW SIDE.

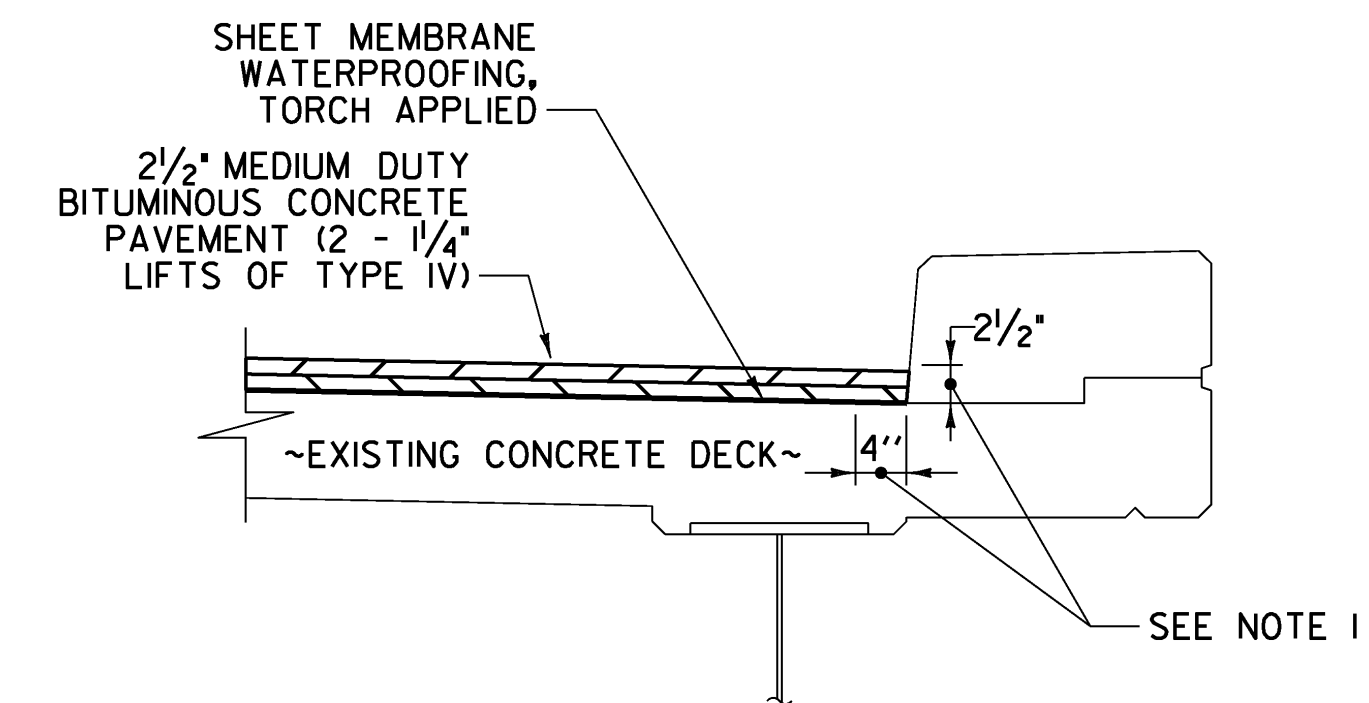
**MEMBRANE SPICE DETAIL - SUPERELEVATED ROADWAY**  
NOT TO SCALE



**TYPICAL APPROACH SECTION**  
NOT TO SCALE



**PAVEMENT TAPER DETAIL**  
NOT TO SCALE  
NOTE: DETAIL TYPICAL FOR ALL BRIDGES

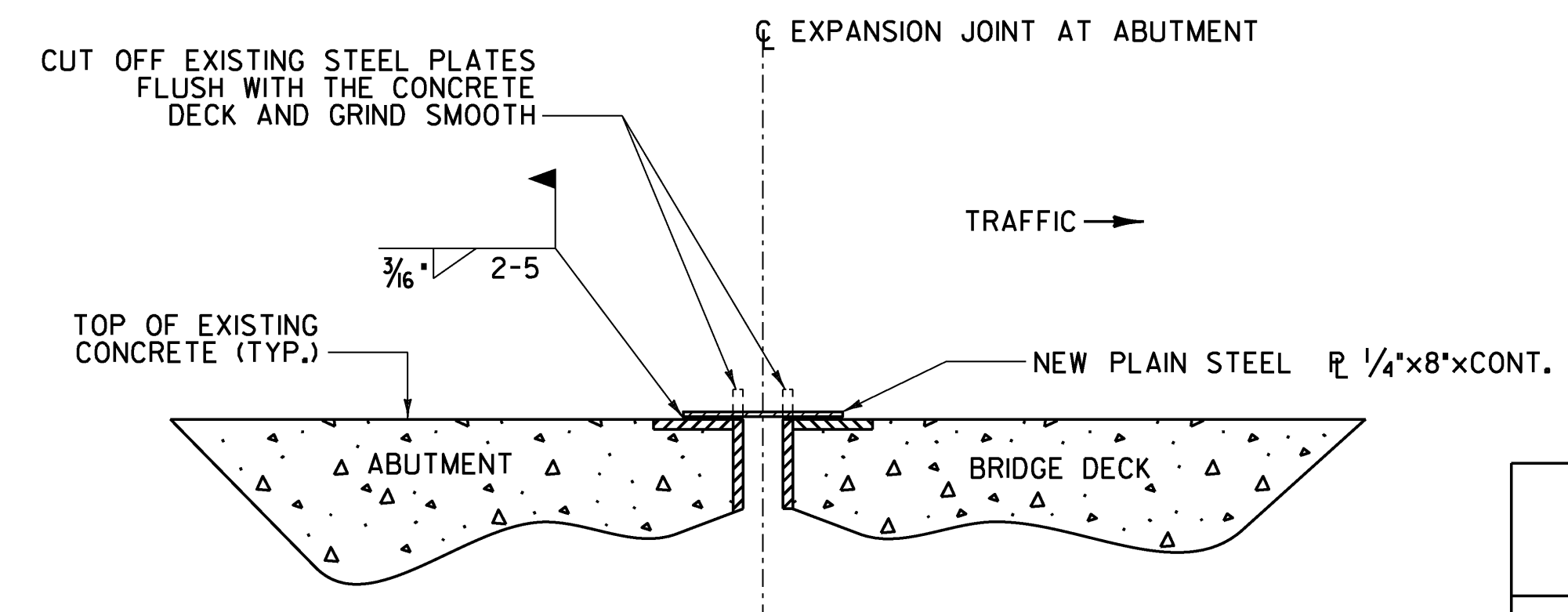


**DETAIL A**  
NOT TO SCALE

**DETAIL A NOTES:**

- INDICATES AREA ALONG DECK AND UP FACE OF CURB FOR PLACEMENT OF TWO COATS OF POLYURETHANE MEMBRANE.
- POLYURETHANE MEMBRANE AND BLAST CLEANING SHALL BE INCLUDED IN THE UNIT PRICE BID FOR SHEET MEMBRANE WATERPROOFING, TORCH APPLIED.
- SHEET MEMBRANE WATERPROOFING SHALL EXTEND TO FACE OF CURB AS SHOWN.
- IN ADDITION TO THE REQUIREMENTS OF SUBSECTION 519.04, BLAST CLEAN 2 1/2\"/>

NOTE: FOR PG BINDER GRADE SEE SECTION 406 OF THE GENERAL SPECIAL PROVISIONS.



**NOTE:**

- DETAIL FOR JOINT AT ABUTMENT NO. 2 FOR BRIDGE NO. 40S.
- ALL WORK ASSOCIATED WITH CUTTING AND GRINDING THE EXISTING STEEL PLATE AND FURNISHING AND INSTALLING THE NEW STEEL PLATE WILL BE PAID FOR UNDER ITEM 900.640 SPECIAL PROVISION (PARTIAL REMOVAL AND MODIFICATION OF METAL PLATE JOINT).
- INSTALL NEW EXPANSION JOINT, ASPHALTIC PLUG TYPE, AT THIS JOINT LOCATION.

**METAL PLATE JOINT MODIFICATION DETAIL - BR 40S**

NOT TO SCALE

**BRIDGE LENGTH AND WIDTH (CURB TO CURB)**

	WIDTH (CURB TO CURB) (FEET)	LENGTH (FEET)
33 SOUTH	30.0	657
34 SOUTH	30.0	168
35 NORTH	38.0	119
35 SOUTH	38.0	119
39 NORTH	30.0	173
39 SOUTH	30.0	173
40 SOUTH	30.0	316

**ASPHALTIC PLUG JOINT REPLACEMENT SCHEDULE**

BRIDGE NO.	ABUT. 1	PIER 1	PIER 2	PIER 3	ABUT. 2
33 SOUTH	--	--	--	--	--
34 SOUTH	33.0 LF	--	--	--	--
35 NORTH	42.0 LF	--	--	--	--
35 SOUTH	42.0 LF	--	--	--	--
39 NORTH	--	--	--	--	34.0 LF
39 SOUTH	--	--	--	--	34.0 LF
40 SOUTH	--	--	--	--	30.0 LF

PROJECT NAME: WINDSOR - HARTLAND  
PROJECT NUMBER: IM MEMB (14)

FILE NAME: \$FILEABBREV\$  
PROJECT LEADER: G. BOGUE  
DESIGNED BY: M. CHENETTE  
**BITUMINOUS CONCRETE DETAILS**

PLOT DATE: \$\$\$DATE\$\$\$  
DRAWN BY: E. ALLING  
CHECKED BY: M. CHENETTE  
SHEET 8 OF 39

