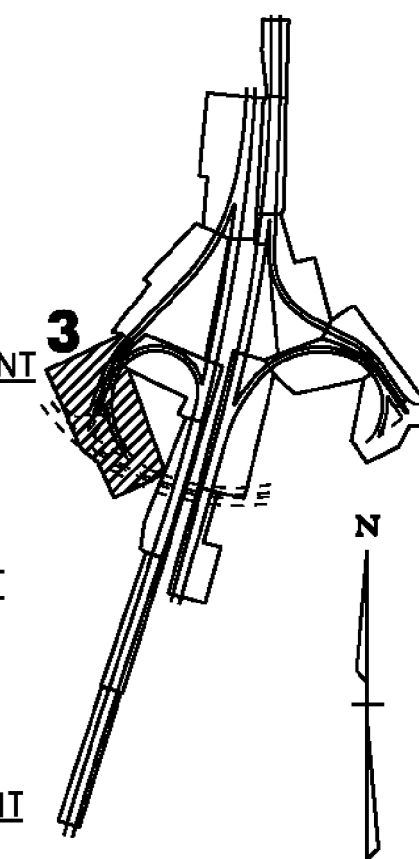


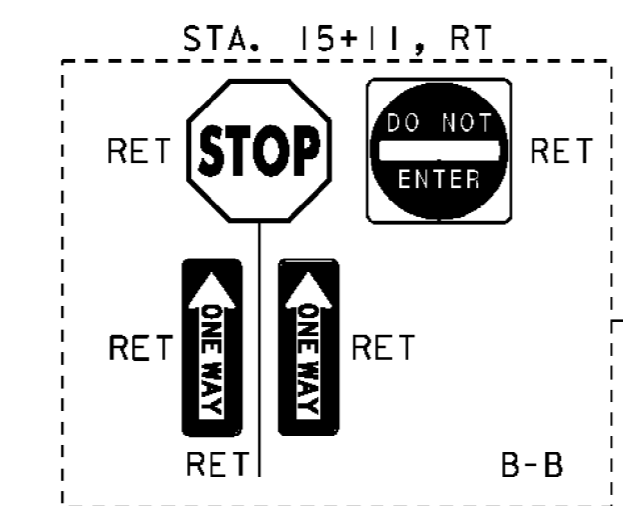
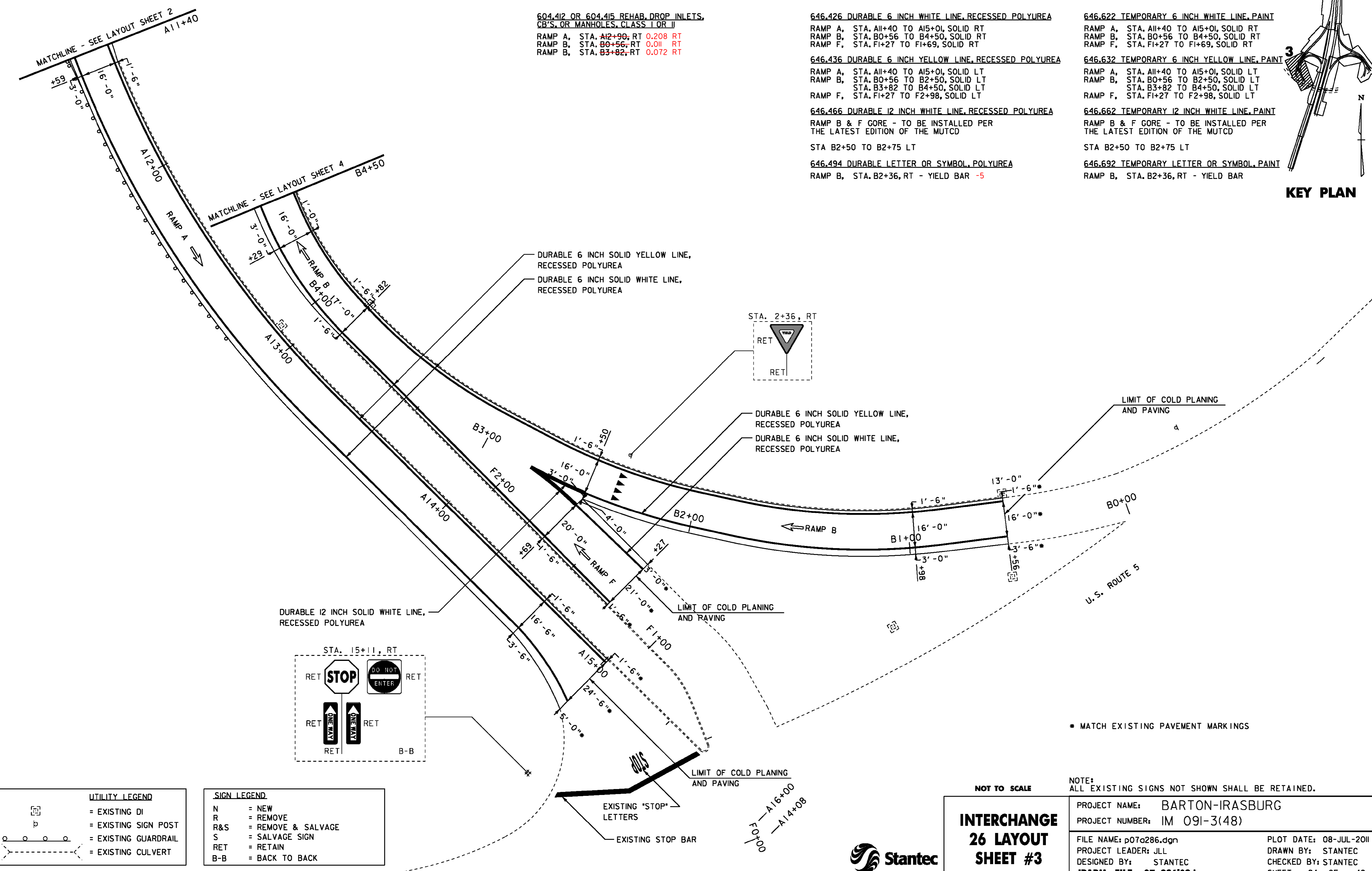
604.412 OR 604.415 REHAB. DROP INLETS,
 CB'S, OR MANHOLES, CLASS I OR II
 RAMP A, STA. A12+90, RT 0.208 RT
 RAMP B, STA. B0+56, RT 0.011 RT
 RAMP B, STA. B3+82, RT 0.072 RT

646.426 DURABLE 6 INCH WHITE LINE, RECESSED POLYUREA
 RAMP A, STA. A11+40 TO A15+01, SOLID RT
 RAMP B, STA. B0+56 TO B4+50, SOLID RT
 RAMP F, STA. F1+27 TO F1+69, SOLID RT
 646.436 DURABLE 6 INCH YELLOW LINE, RECESSED POLYUREA
 RAMP A, STA. A11+40 TO A15+01, SOLID LT
 RAMP B, STA. B0+56 TO B2+50, SOLID LT
 STA. B3+82 TO B4+50, SOLID LT
 RAMP F, STA. F1+27 TO F2+98, SOLID LT
 646.466 DURABLE 12 INCH WHITE LINE, RECESSED POLYUREA
 RAMP B & F GORE - TO BE INSTALLED PER
 THE LATEST EDITION OF THE MUTCD
 STA B2+50 TO B2+75 LT
 646.494 DURABLE LETTER OR SYMBOL, POLYUREA
 RAMP B, STA. B2+36, RT - YIELD BAR -5

646.622 TEMPORARY 6 INCH WHITE LINE, PAINT
 RAMP A, STA. A11+40 TO A15+01, SOLID RT
 RAMP B, STA. B0+56 TO B4+50, SOLID RT
 RAMP F, STA. F1+27 TO F1+69, SOLID RT
 646.632 TEMPORARY 6 INCH YELLOW LINE, PAINT
 RAMP A, STA. A11+40 TO A15+01, SOLID LT
 RAMP B, STA. B0+56 TO B2+50, SOLID LT
 STA. B3+82 TO B4+50, SOLID LT
 RAMP F, STA. F1+27 TO F2+98, SOLID LT
 646.662 TEMPORARY 12 INCH WHITE LINE, PAINT
 RAMP B & F GORE - TO BE INSTALLED PER
 THE LATEST EDITION OF THE MUTCD
 STA B2+50 TO B2+75 LT
 646.692 TEMPORARY LETTER OR SYMBOL, PAINT
 RAMP B, STA. B2+36, RT - YIELD BAR



KEY PLAN



UTILITY LEGEND

	= EXISTING DI
	= EXISTING SIGN POST
	= EXISTING GUARDRAIL
	= EXISTING CULVERT

SIGN LEGEND

N	= NEW
R	= REMOVE
R&S	= REMOVE & SALVAGE
S	= SALVAGE SIGN
RET	= RETAIN
B-B	= BACK TO BACK

NOT TO SCALE

NOTE: ALL EXISTING SIGNS NOT SHOWN SHALL BE RETAINED.

**INTERCHANGE
 26 LAYOUT
 SHEET #3**

PROJECT NAME: BARTON-IRASBURG	PLOT DATE: 08-JUL-2011
PROJECT NUMBER: IM 091-3(48)	DRAWN BY: STANTEC
FILE NAME: p07a286.dgn	CHECKED BY: STANTEC
PROJECT LEADER: JLL	SHEET 24 OF 40
DESIGNED BY: STANTEC	
IPARM FILE: p07a286109.i	

