

GPS CONTROL POINTS

HVCTRL #1

I 91 EXIT 6 AZ MK
 NORTH = 249990.88
 EAST = 1650387.59
 ELEV. = 383.95

General location, Rockingham, VT. To reach from the I-91 northbound bridge over VT route 103 at exit 6, go north along I-91 for 0.5 mi to the north bound mile marker 35.60, at U-turn, and the site of the mark on the left of the median just south of the U-turn. The mark is set flush with the ground surface in the top of a 12" diameter concrete monument. It is 8.5' east of and about 0.3' lower than the east edge of pavement of the I-91 south bound lane, 36.4' west of and about 1.3' lower than the west edge of pavement of the north bound lane, 30.2' south of the centerline of the U-turn, 21.3' northwest of the center of a 24" square metal drain grate, and 1' north of a fiberglass witness post.

HVCTRL #2

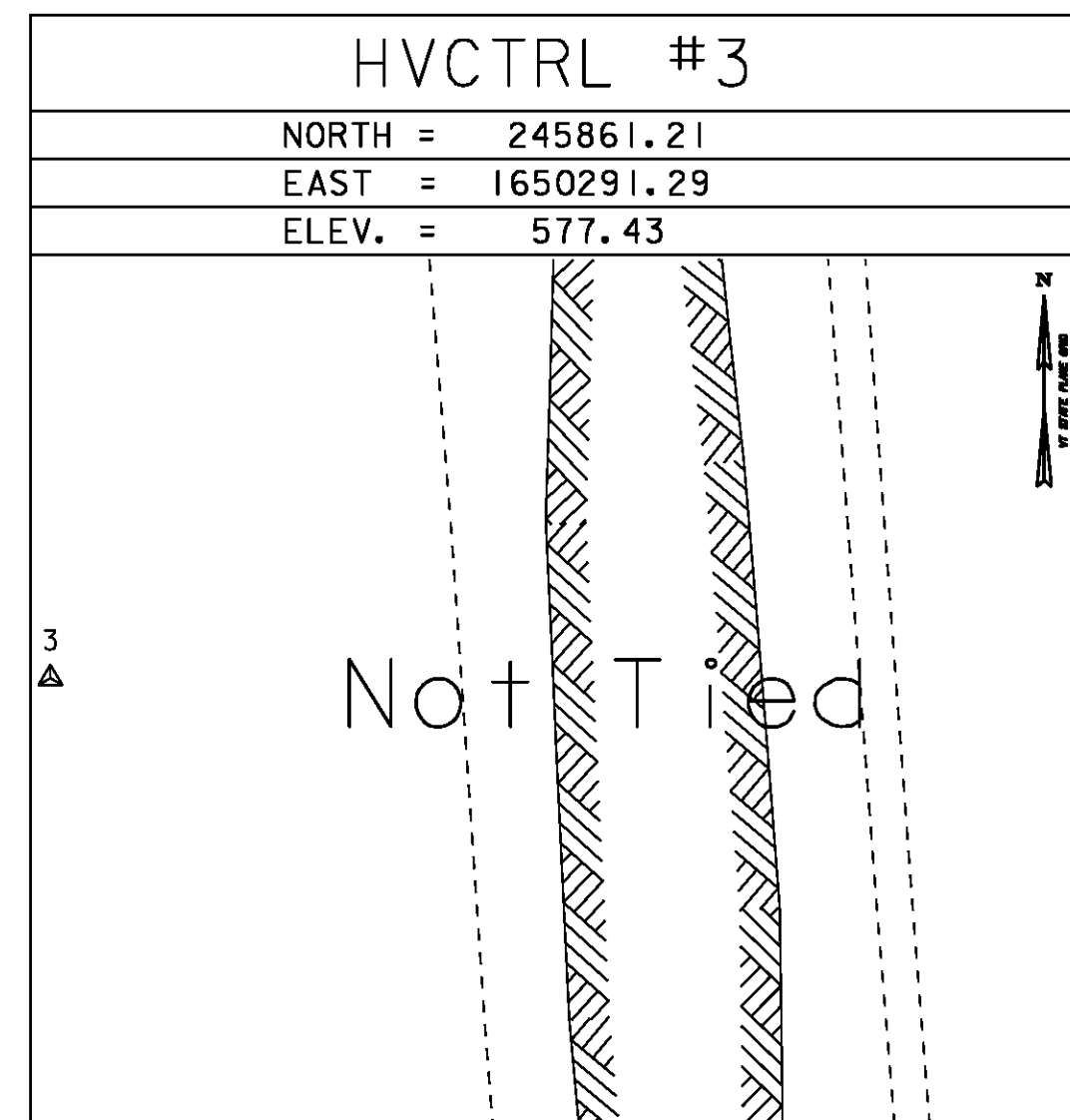
I 91 EXIT 6
 NORTH = 247458.07
 EAST = 1650238.24
 ELEV. = 504.26

General location, Rockingham, VT. The mark is located in the median at the north end of the I-91 Bridges over VT route 103 at exit 6. It is between I-91 northbound mile marker's 35.20 and 35.25. The mark is set flush with ground surface in the top of a 12" diameter concrete monument. It is 20' east of and about level with the east edge of pavement of the southbound lane, 23.3' west of and about level with the west edge of pavement of the northbound lane, 21.7' northeast corner of the concrete curb of the southbound bridge, 29.5' northwest of the northwest corner of the concrete curb of the north bound bridge, 15' south of a steel beam guard rail, and 1' north of a fiberglass witness post.

TRAVERSE TIES

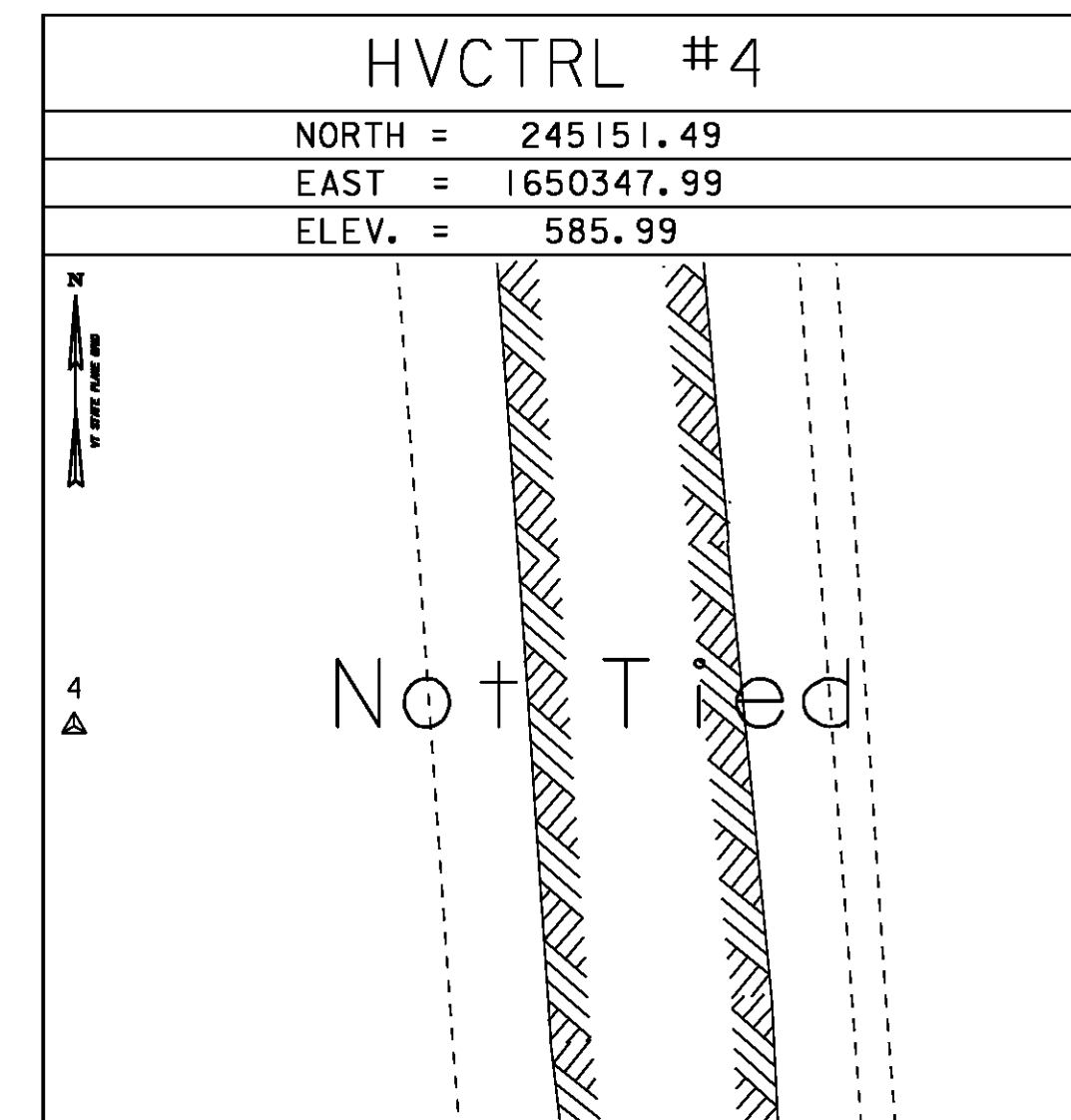
HVCTRL #3

NORTH = 245861.21
 EAST = 1650291.29
 ELEV. = 577.43



HVCTRL #4

NORTH = 245151.49
 EAST = 1650347.99
 ELEV. = 585.99



* Main Traverse Completed 12/18/07 by R. Gilman P.C. & P. Winters & D. Breer

NORTH =
EAST =
ELEV. =

NORTH =
EAST =
ELEV. =

NORTH =
EAST =
ELEV. =

ALIGNMENT TIES

NORTH =
EAST =
ELEV. =

NORTH =
EAST =
ELEV. =

NORTH =
EAST =
ELEV. =

NORTH =
EAST =
ELEV. =

NORTH =
EAST =
ELEV. =

DATUM	
VERTICAL	NAVD 88
HORIZONTAL	NAD 83(CORS96)
ADJUSTMENT	Compass

PROJECT NAME:	ROCKINGHAM
PROJECT NUMBER:	IM 091-(57)
FILE NAME:	07A158/Design/d07A158+1e.dgn
PROJECT LEADER:	K. ROBIE
DESIGNED BY:	R. BULLOCK
TIE SHEET	
PLOT DATE:	26-MAY-2010
DRAWN BY:	R. BULLOCK
CHECKED BY:	S. MENARD
SHEET	13 OF 78