

GPS CONTROL POINTS

HVCTRL #1c  
 189 EXIT 15 AZ MK  
 NORTH = 727051.24  
 EAST = 1464741.44  
 ELEV. = 204.39

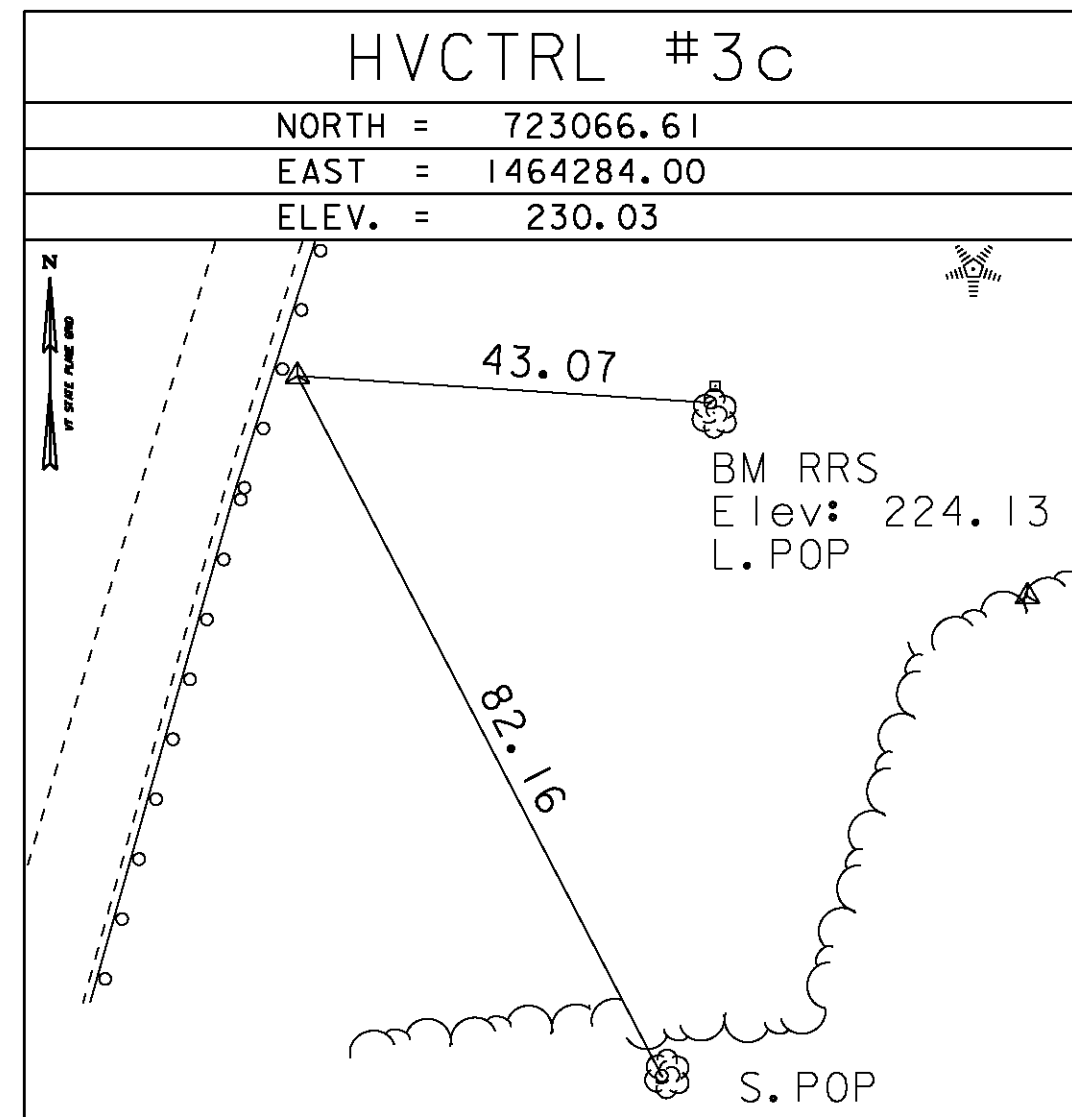
HVCTRL #2c  
 189 EXIT 15  
 NORTH = 724183.46  
 EAST = 1464515.07  
 ELEV. = 279.76

GENERAL LOCATION, SOUTH BURLINGTON, VT. TO REACH FROM THE I-89 SOUTHBOUND BRIDGE OVER VT ROUTE 15 (ETHAN ALLEN STREET) AT EXIT 15 IN WINOOSKI, GO SOUTHWEST ALONG I-89 SOUTHBOUND FOR 0.6 MI (0.97 KM) TO THE SITE OF THE MARK ON THE LEFT IN THE MEDIAN, JUST NORTHEAST OF A GRAVEL U-TURN. THE MARK IS SET FLUSH WITH GROUND SURFACE IN THE TOP OF A 30 CM (12 INCH) DIAMETER CONCRETE MONUMENT. IT IS 3.9 M (12.8 FT) SOUTHEAST OF AND ABOUT LEVEL WITH THE I-89 SOUTHBOUND SOUTHEAST EDGE OF PAVEMENT, 8.7 M (28.5 FT) NORTHWEST OF THE I-89 NORTHBOUND NORTHWEST EDGE OF PAVEMENT, 1.8 M (5.9 FT) WEST OF A STEEL BEAM GUARD RAIL, 7.0 M (23.0 FT) NORTH NORTHEAST OF A U-TURN SIGN, 16.5 M (54.1 FT) NORTHEAST OF THE CENTERLINE OF THE U-TURN, AND 0.4 M (1.3 FT) SOUTHWEST OF A FIBERGLASS WITNESS POST.

GENERAL LOCATION, WINOOSKI, VT. TO REACH FROM THE I-89 SOUTHBOUND BRIDGE OVER VT ROUTE 15 (ETHAN ALLEN STREET) AT EXIT 15, GO SOUTH ALONG I-89 SOUTHBOUND FOR ABOUT 30 M (98.4 FT) TO THE SITE OF THE MARK ON THE LEFT IN THE MEDIAN. THE MARK IS SET FLUSH WITH GROUND SURFACE IN THE TOP OF A 30 CM (12 INCH) DIAMETER CONCRETE MONUMENT. IT IS 7.4 M (24.3 FT) EAST OF AND ABOUT 0.2 M (0.7 FT) HIGHER THAN THE I-89 SOUTHBOUND EAST EDGE OF PAVEMENT, 5.2 M (17.1 FT) WEST OF THE I-89 NORTHBOUND WEST EDGE OF PAVEMENT, 2.8 M (9.2 FT) WEST SOUTHWEST OF THE MOST SOUTHERLY WOODEN POST FOR A STEEL BEAM GUARD RAIL, AND 0.5 M (1.6 FT) SOUTH OF A FIBERGLASS WITNESS POST.

\* Main Traverse Completed 07/17/07 by L.Orvis P.C. & T.Parker

TRAVERSE TIES



NORTH =
EAST =
ELEV. =

NORTH =
EAST =
ELEV. =

NORTH =
EAST =
ELEV. =

NORTH =
EAST =
ELEV. =

ALIGNMENT TIES

NORTH =
EAST =

NORTH =
EAST =

NORTH =
EAST =

NORTH =
EAST =

NORTH =
EAST =

DATUM	
VERTICAL	NAVD 88
HORIZONTAL	NAD 83(96)
ADJUSTMENT	Compass

x07a104c

PROJECT NAME:	SOUTH BURLINGTON
PROJECT NUMBER:	SCRP (3)
FILE NAME:	d107a104_+1.dgn
PROJECT LEADER:	K. UPMAL
DESIGNED BY:	B. MCADAMS
TIE SHEET	3
PLOT DATE:	13-JAN-2010
DRAWN BY:	R. BULLOCK
CHECKED BY:	B. KIPP
SHEET	6 OF 69