

GPS CONTROL POINTS

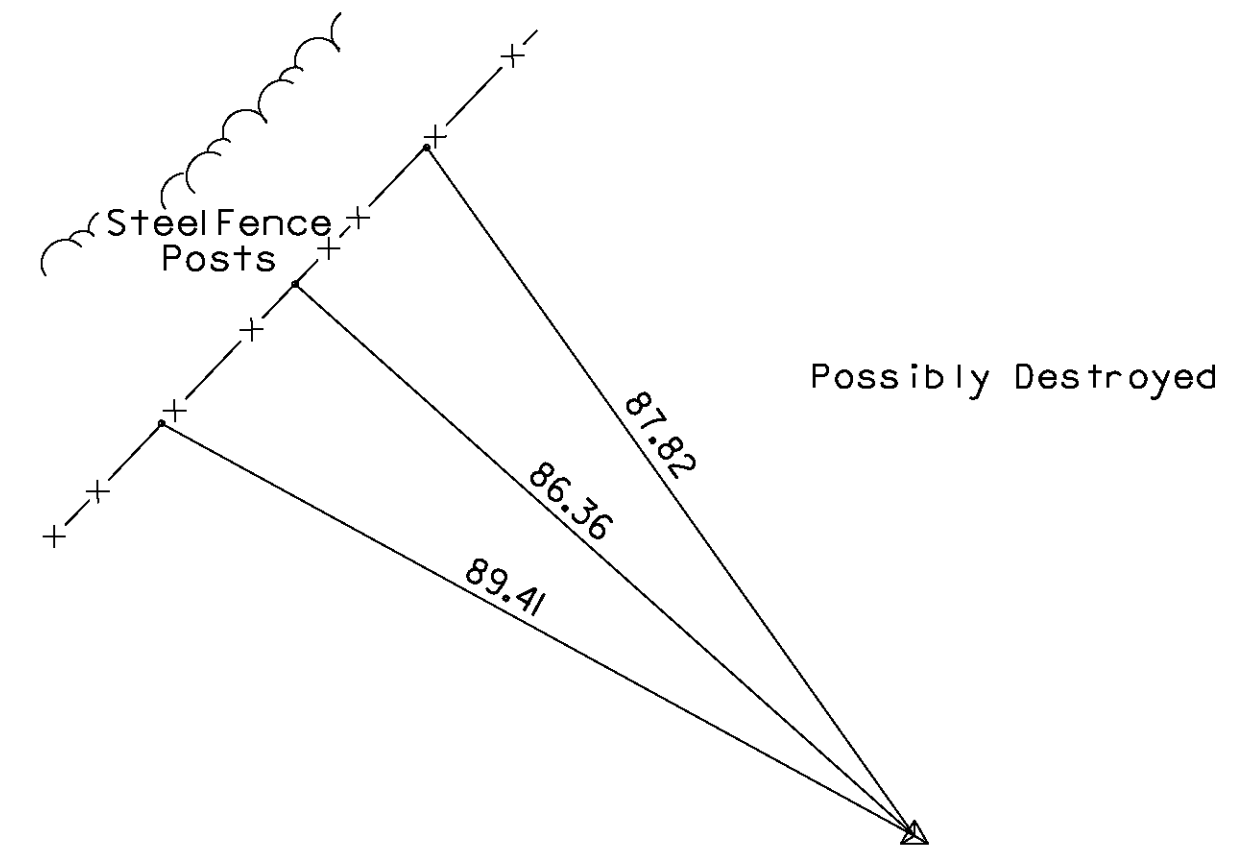
CW3 RESET 1991

NORTH = 719709.85  
 EAST = 1461835.18  
 ELEV. = 312.40  
 TRAV PT#1 FILE 03A178 & 05K286

GENERAL LOCATION, BURLINGTON, VT., ON THE BURLINGTON/SOUTH BURLINGTON CITY LINE. TO REACH FROM THE WEST END OF THE U.S.ROUTE 2 (WILLISTON ROAD) BRIDGE OVER I-89 AT EXIT 14 IN SOUTH BURLINGTON GO WEST ALONG U.S.ROUTE 2 FOR 0.2 MI(0.3 KM) TO THE INTERSECTION OF THE MAIN ENTRANCE DRIVE TO THE SHERITON INN RIGHT, TURN RIGHT AND GO NORTH ALONG ENTRANCE DRIVE FOR 0.1MI(0.2 KM) TO A FORK, BEAR LEFT AND GO NORTH ALONG PAVED ROAD FOR 0.05 MI(0.08 KM) TO THE T-INTERSECTION OF CATAMOUNT DRIVE, JUST PAST A GRAVEL DRIVE LEFT TO A 10 BAY WOODEN BARN/GARAGE. TURN LEFT AND GO WEST ALONG CATAMOUNT DRIVE FOR ABOUT 30 M (98.4 FT) TO A GATE. PARK VEHICLE AND WALK NORTH ALONG THE TOP OF A V-SHAPED WOODED PLATEAU FOR ABOUT 95 M (311.7 FT) TO THE SITE OF MARK. THE MARK IS SET 5 CM ABOVE GROUND SURFACE IN THE TOP OF A 20 CM SQUARE CONCRETE MONUMENT 1.4 M (4.6 FT) DEEP. IT IS 94.0 M (308.4 FT) NORTH OF AND ABOUT 3 M (9.8 FT) LOWER THAN THE CENTERLINE OF CATAMOUNT DRIVE, 88.8 M (291.3 FT) NORTH OF LIGHT POLE NO.GP2, 90.3 M (296.3 FT) NORTH-NORTHWEST OF THE MOST WESTERLY (OF 2) 1M (3.3 FT) SQUARE ELECTRICAL BOXES WHICH ARE FLUSH WITH GROUND SURFACE, AND 0.5 M (1.6 FT) NORTHWEST OF A STEEL WITNESS POST.

TRAV PT#6 FILE 03A178 = REBAR  
 TRAV PT#2 FILE 05K286 = REBAR

NORTH = 719846.57  
 EAST = 1462091.61  
 ELEV. = 299.58



\* Main Traverse Completed 06/16/06 by L.Orvis P.C. and R.Bullock for file 05K286  
 \* Main Traverse Completed 07/11/07 by L.Orvis P.C. and R.Bullock & T.Parker

TRAVERSE TIES

HVCTRL #5a	
NORTH =	711732.08
EAST =	1462683.65
ELEV. =	290.06

STEEL GRR POST  
 9.28  
 9.59

HVCTRL #6a	
NORTH =	711508.86
EAST =	1463228.65
ELEV. =	291.46

BM#6  
 CH SQ NW XAT  
 ELEV: 292.95  
 22.42  
 9.49  
 10.03

NORTH =	
EAST =	
ELEV. =	

NORTH =	
EAST =	
ELEV. =	

NORTH =	
EAST =	
ELEV. =	

ALIGNMENT TIES

NORTH =	
EAST =	

NORTH =	
EAST =	

NORTH =	
EAST =	

NORTH =	
EAST =	

NORTH =	
EAST =	

x07a104a

DATUM	
VERTICAL	NAVD 88
HORIZONTAL	NAD 83(96)
ADJUSTMENT	Compass

PROJECT NAME:	SOUTH BURLINGTON
PROJECT NUMBER:	SCRP (3)
FILE NAME:	d107a104_+1.dgn
PROJECT LEADER:	K. UPMAL
DESIGNED BY:	B. MCADAMS
TIE SHEET I	
PLOT DATE:	13-JAN-2010
DRAWN BY:	R. BULLOCK
CHECKED BY:	B. KIPP
SHEET 4	OF 69