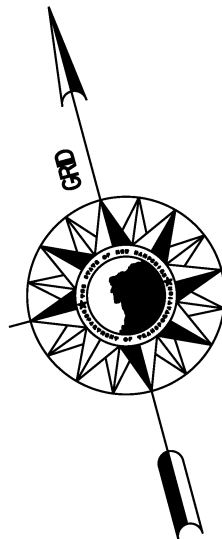
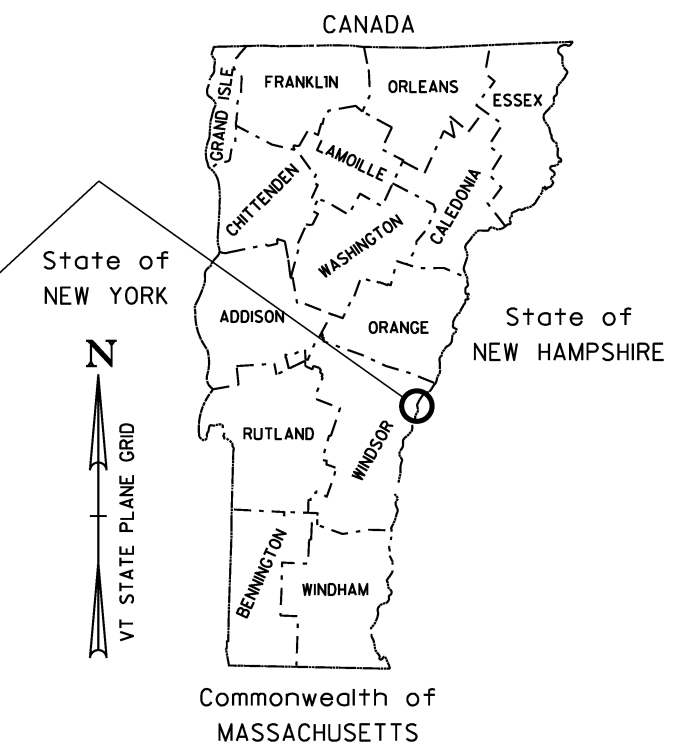


STATE OF VERMONT AGENCY OF TRANSPORTATION



Project Location
NTS



Commonwealth of
MASSACHUSETTS

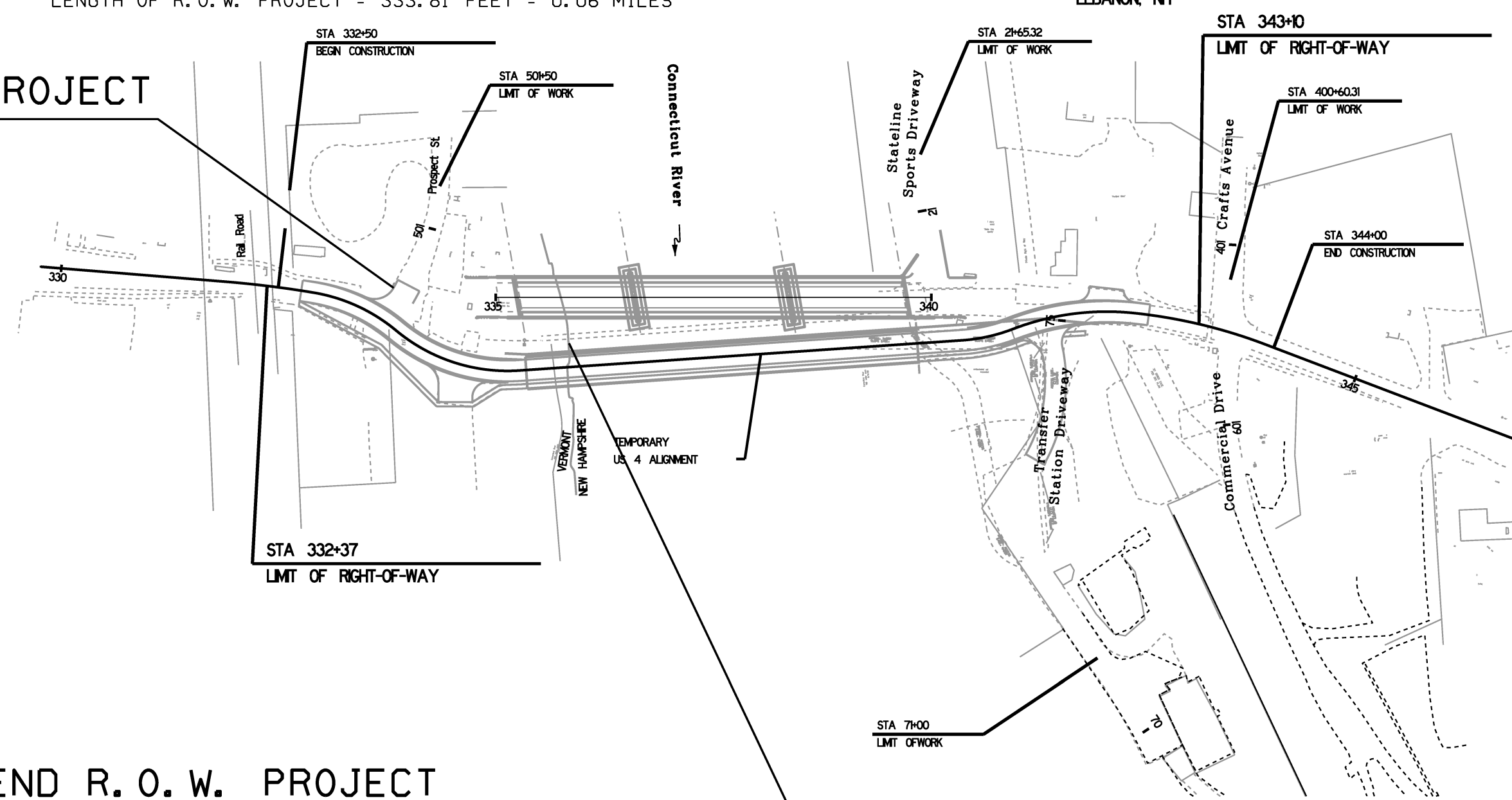
R. O. W. PLANS

PROPOSED IMPROVEMENT

LENGTH OF R. O. W. PROJECT = 333.81 FEET = 0.06 MILES

BEGIN R. O. W. PROJECT

**STA. 332+50.00
45.12' LT.**



END R. O. W. PROJECT

**STA. 335+83.81' ±
52.84' RT. ±**

QUALITY ASSURANCE PROGRAM: LEVEL

CONVENTIONAL SYMBOLS

COUNTY LINE	
TOWN LINE	
LIMITS OF ACCESS	
POINT OF ACCESS	
FENCE LINE	
STONE WALL	
TRAVELED WAY	
GUARD RAIL	
RAILROAD	
SURVEY LINE	
CULVERT	
POWER POLE	
TELEPHONE POLE	
TREES	
CONTROL OF ACCESS	
PROPERTY LINE	
R.O.W. TAKING LINE	
SLOPE RIGHTS	
TOP OF CUT	
TOE OF SLOPE	

SURVEYED BY : STATE OF NEW HAMPSHIRE
SURVEYED DATE :

DATUM

VERTICAL: NGVD29
HORIZONTAL: NAD 83/86

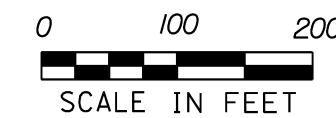
THE VERMONT AGENCY OF TRANSPORTATION CREATED THESE PLANS USING ELECTRONIC AUTO-CAD DRAWING FILES THAT WERE PROVIDED BY THE STATE OF NEW HAMPSHIRE DEPARTMENT OF TRANSPORTATION.

CERTAIN FONTS AND LINE STYLES HAVE BEEN COMPROMISED AS A RESULT OF AN AUTO-CAD TO MICROSTATION CONVERSION.

DUE TO TIME AND FINANCIAL CONSTRAINTS SOME OF THE ELEMENTS THAT HAVE BEEN COMPROMISED THAT SPECIFICALLY RELATE TO DESIGN ASPECTS HAVE BEEN LEFT IN THEIR COMPROMISED STATE.

THESE RIGHT OF WAY PLANS HAVE BEEN CREATED TO ASSIST IN THE PROCESS OF ACQUIRING THE LAND AND RIGHTS NECESSARY TO BUILD THE PROJECT AS DESIGNED IN THE STATE OF VERMONT.

FOR SPECIFIC DEIGN CRITERIA PLEASE REFER TO THE STATE OF NEW HAMPSHIRE DEPARTMENT OF TRANSPORTATION CONSTRUCTION PLAN SET.



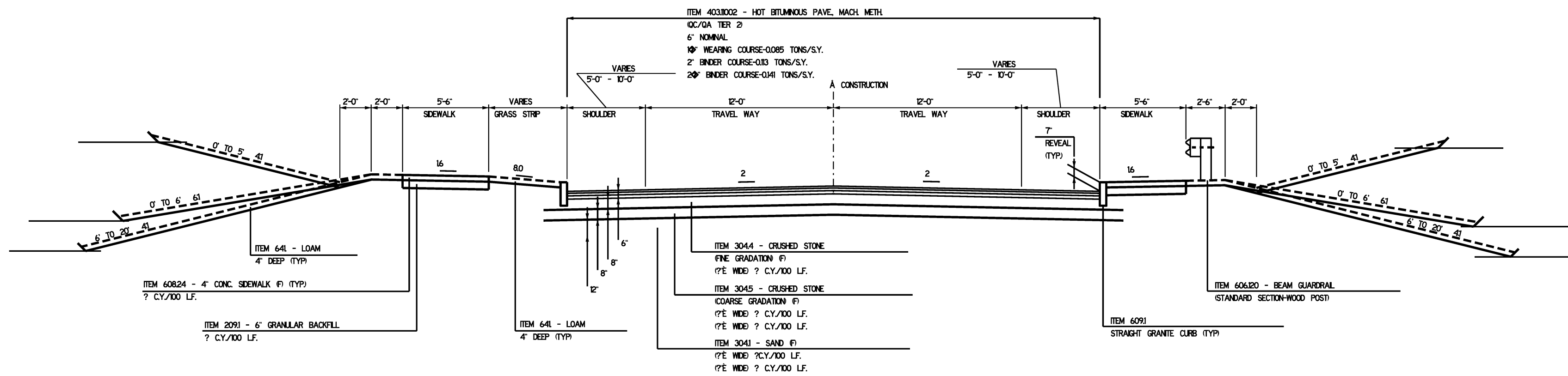
THESE PLANS ARE SUBJECT TO SUCH ENGINEERING CHANGES AS MAY BE REQUIRED BY THE FEDERAL HIGHWAY ADMINISTRATION OR THE DIRECTOR OF PROGRAM DEVELOPMENT.

APPROVED RICHARD TETRAULT DATE 1-17-2012
Director of Program Development

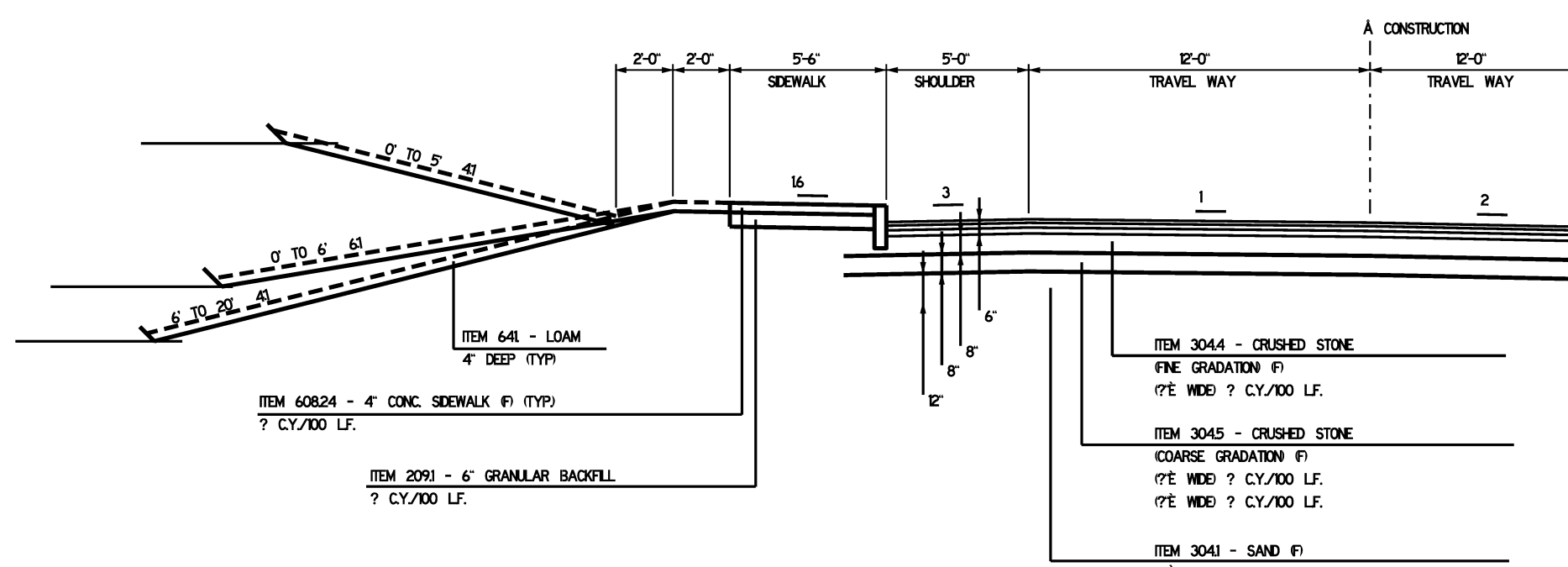
APPROVED ROBERT M. WHITE DATE 1-17-2012
Chief of Right of Way

HARTFORD - LEBANON
BRF A000(627)

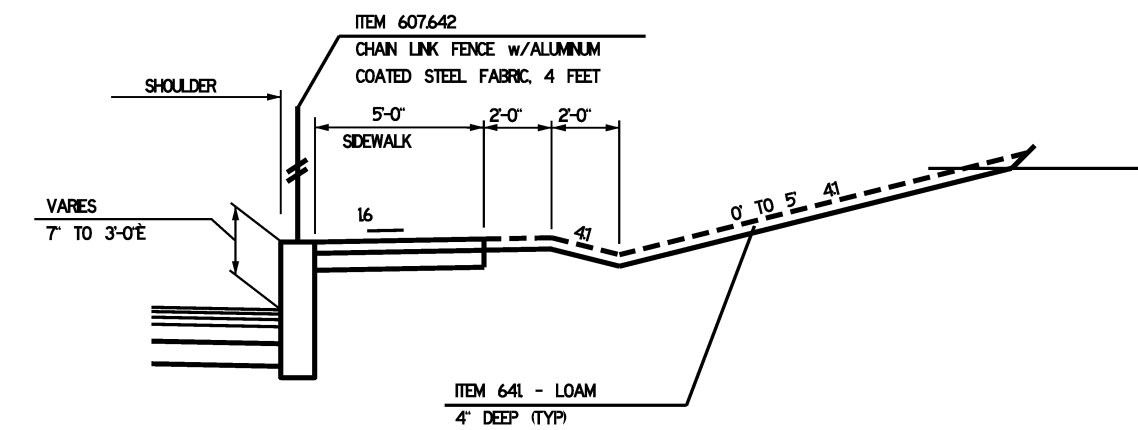
ROW SHEET 1 OF 10 SHEETS



US 4
 STA 333+79.80 TO STA 342+25
 SCALE 1" = 1'-0"



US 4
HIGH SIDE SUPERELEVATION DETAIL
 STA 340+91.76 TO STA 343+10.00



RETAINING WALL DETAIL
 STA 332+50 TO STA 333+00

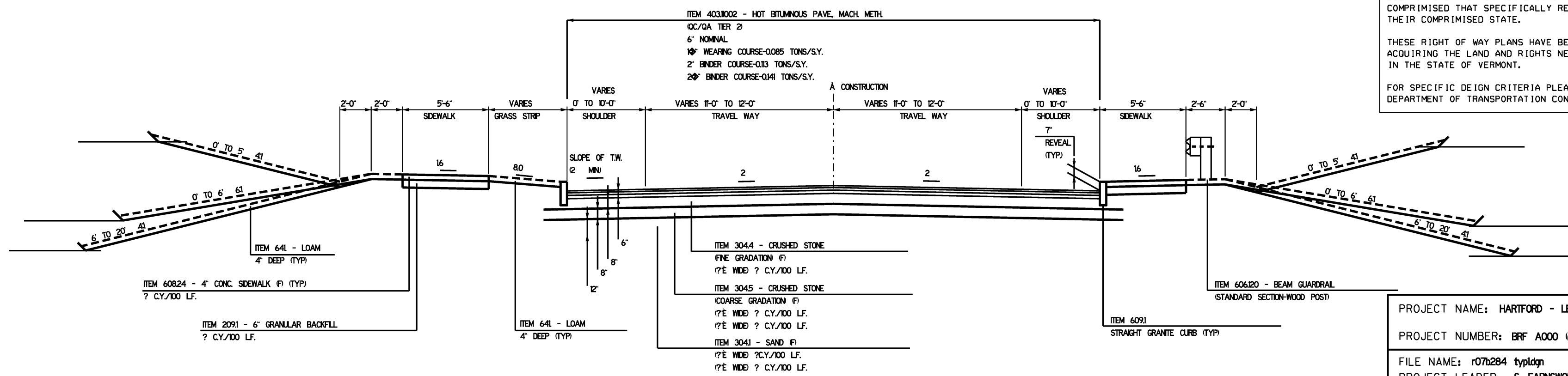
THE VERMONT AGENCY OF TRANSPORTATION CREATED THESE PLANS USING ELECTRONIC AUTO-CAD DRAWING FILES THAT WERE PROVIDED BY THE STATE OF NEW HAMPSHIRE DEPARTMENT OF TRANSPORTATION.

CERTAIN FONTS AND LINE STYLES HAVE BEEN COMPROMISED AS A RESULT OF AN AUTO-CAD TO MICROSTATION CONVERSION.

DUE TO TIME AND FINANCIAL CONSTRAINTS SOME OF THE ELEMENTS THAT HAVE BEEN COMPROMISED THAT SPECIFICALLY RELATE TO DESIGN ASPECTS HAVE BEEN LEFT IN THEIR COMPROMISED STATE.

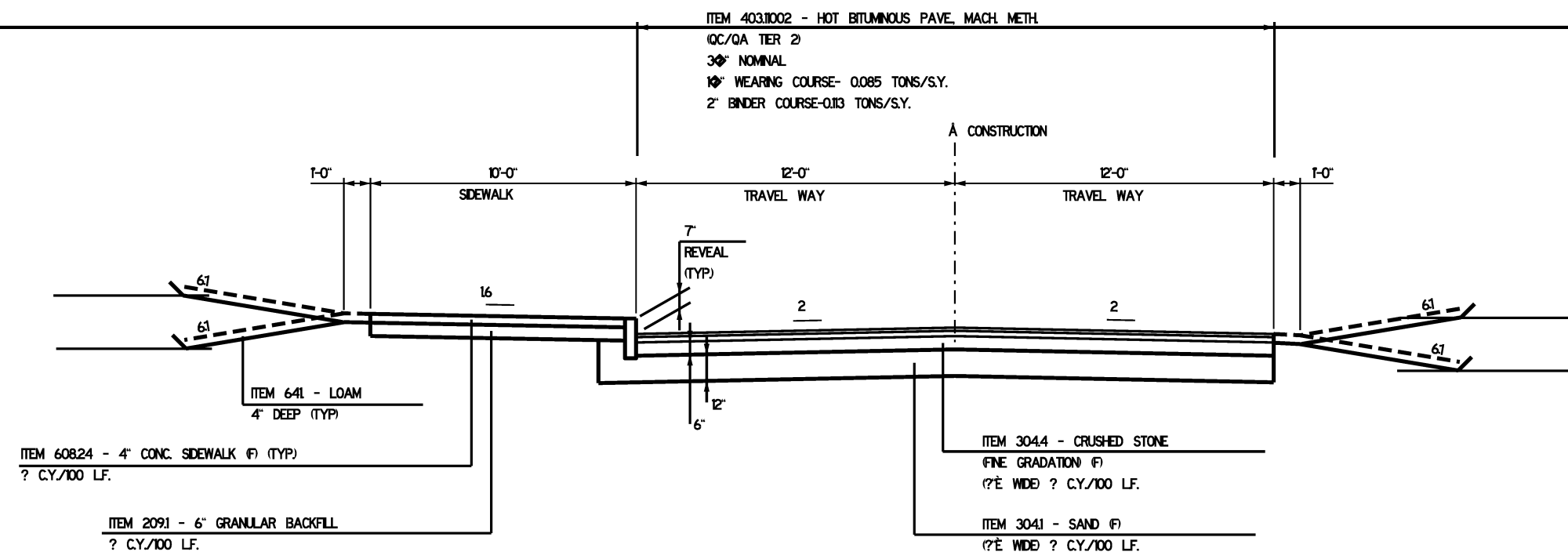
THESE RIGHT OF WAY PLANS HAVE BEEN CREATED TO ASSIST IN THE PROCESS OF ACQUIRING THE LAND AND RIGHTS NECESSARY TO BUILD THE PROJECT AS DESIGNED IN THE STATE OF VERMONT.

FOR SPECIFIC DEIGN CRITERIA PLEASE REFER TO THE STATE OF NEW HAMPSHIRE DEPARTMENT OF TRANSPORTATION CONSTRUCTION PLAN SET.



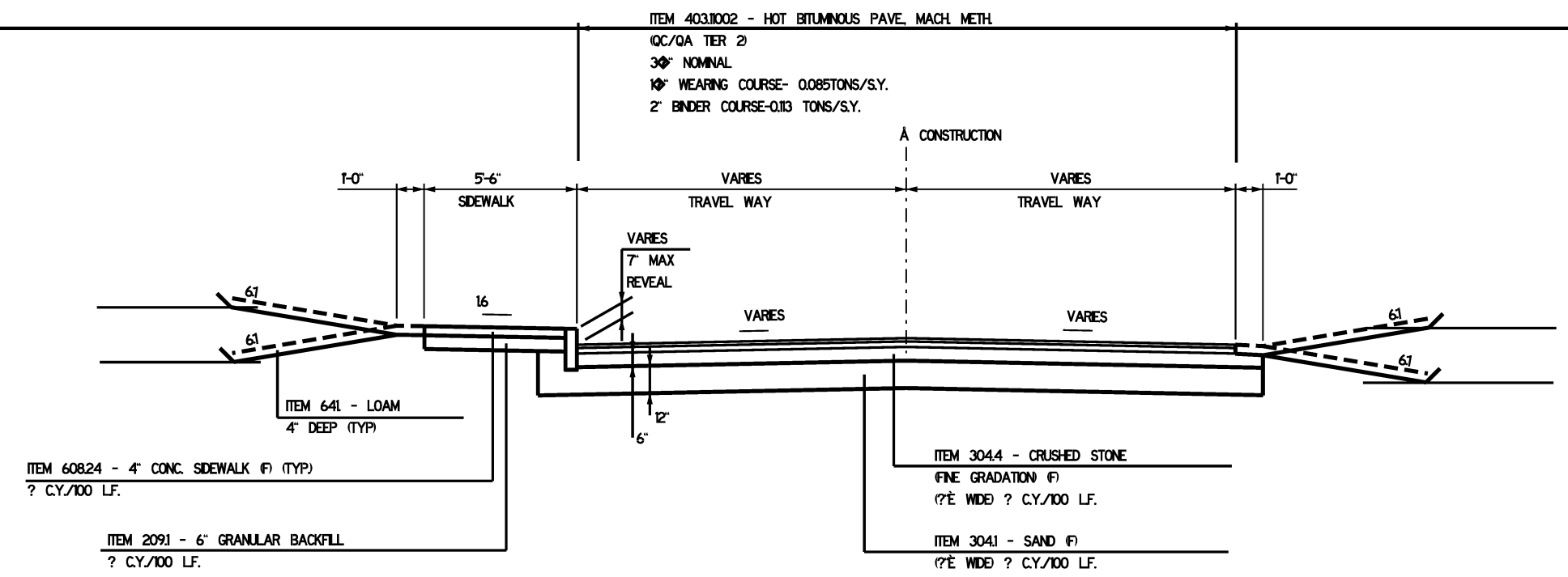
US 4

PROJECT NAME: HARTFORD - LEBANON
 PROJECT NUMBER: BRF A000 627
 FILE NAME: r07b284 typldgn
 PROJECT LEADER: S. FARNSWORTH / VT.
 DESIGNED BY:
 PLOT DATE: 11-APR-2012
 DRAWN BY:
 CHECKED BY:
 ROW SHEET 2 OF 10



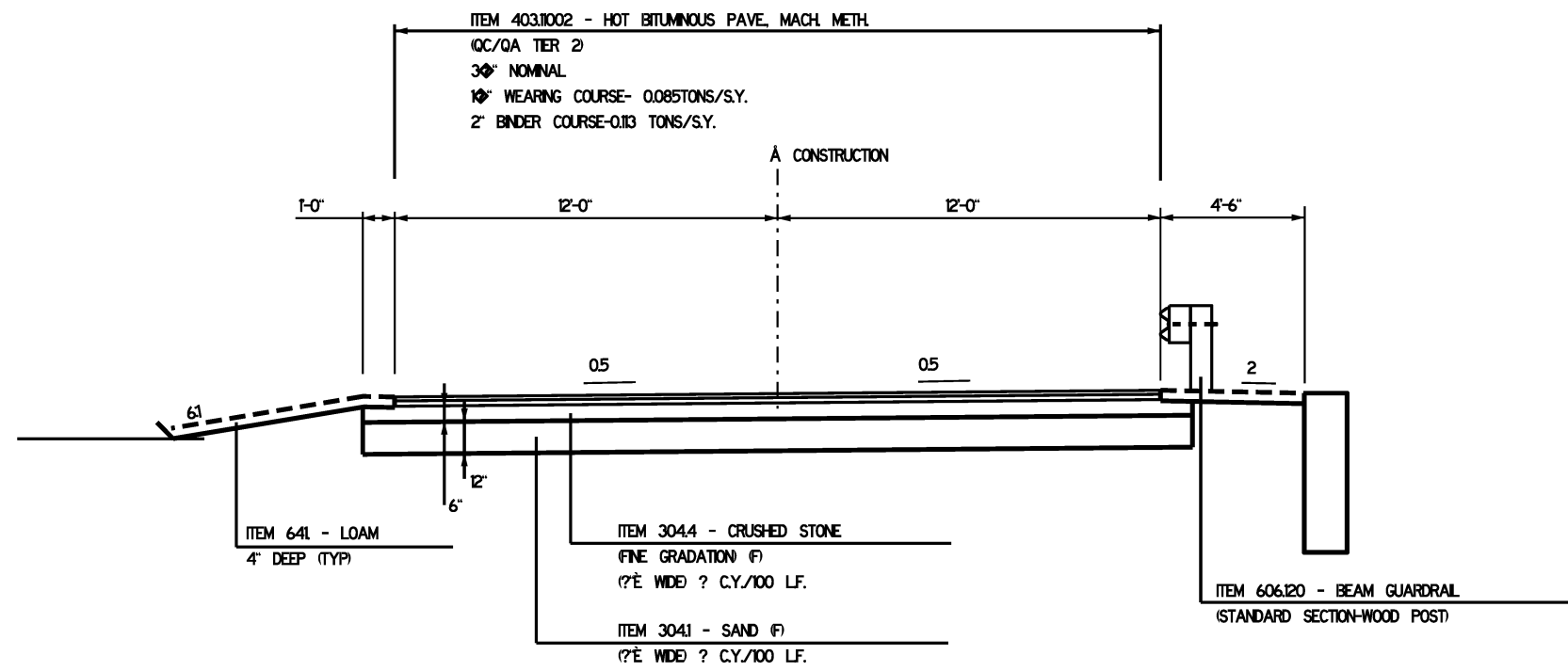
TRANSFER STATION DRIVEWAY

SCALE 1" = 1'-0"



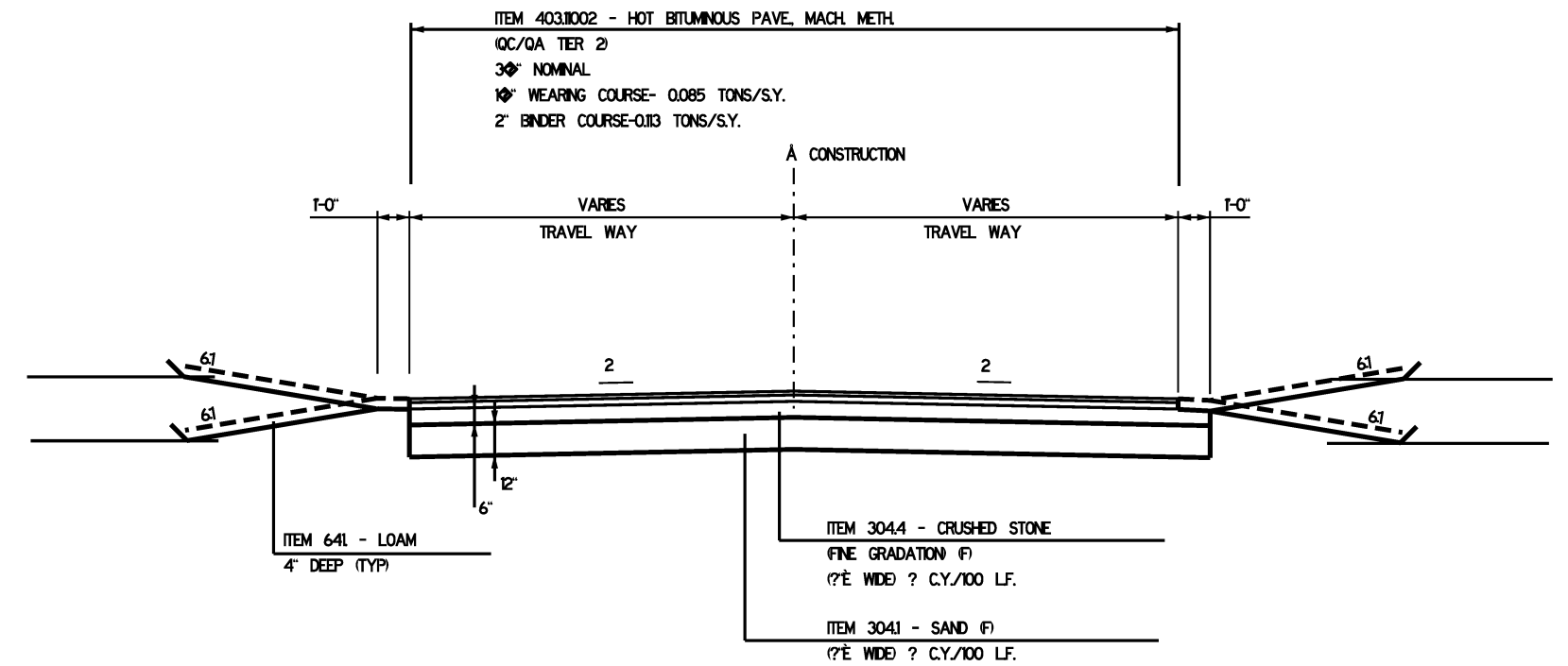
CRAFTS AVENUE

SCALE 1" = 1'-0"



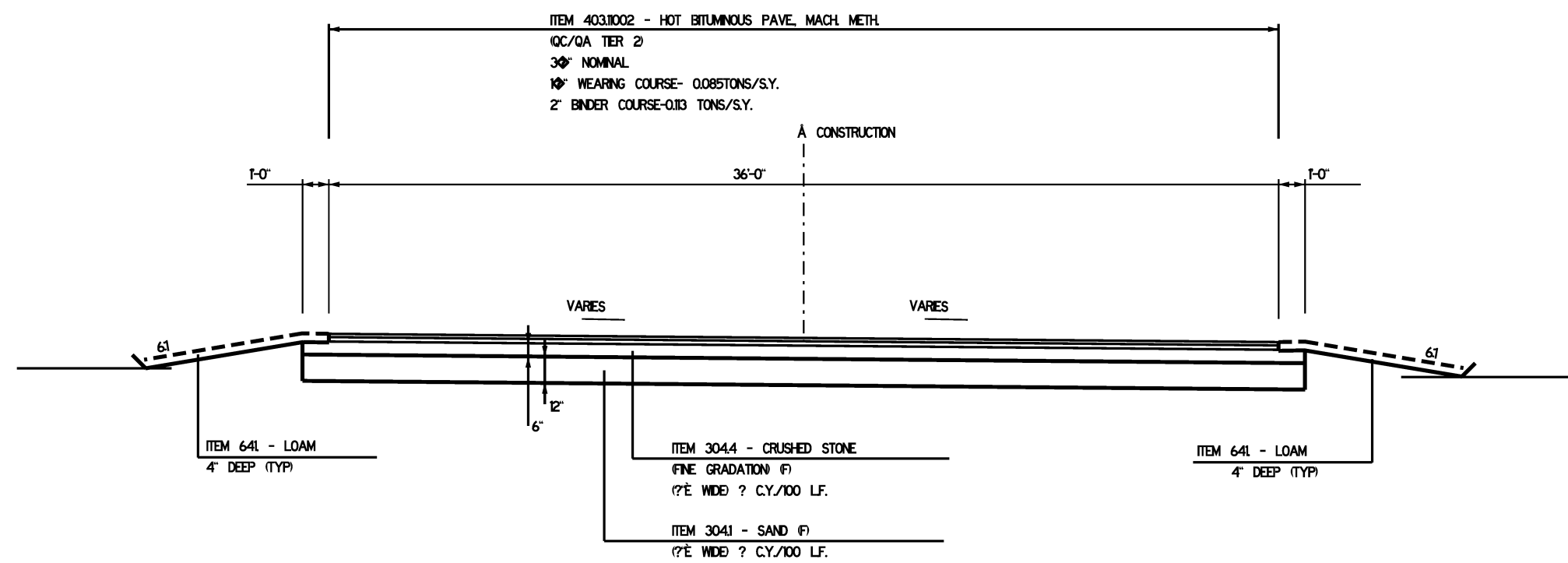
STATELINE SPORTS DRIVEWAY

SCALE 1" = 1'-0"



PROSPECT STREET

SCALE 1" = 1'-0"



LISTEN INC. DRIVEWAY

SCALE 1" = 1'-0"

THE VERMONT AGENCY OF TRANSPORTATION CREATED THESE PLANS USING ELECTRONIC AUTO-CAD DRAWING FILES THAT WERE PROVIDED BY THE STATE OF NEW HAMPSHIRE DEPARTMENT OF TRANSPORTATION.

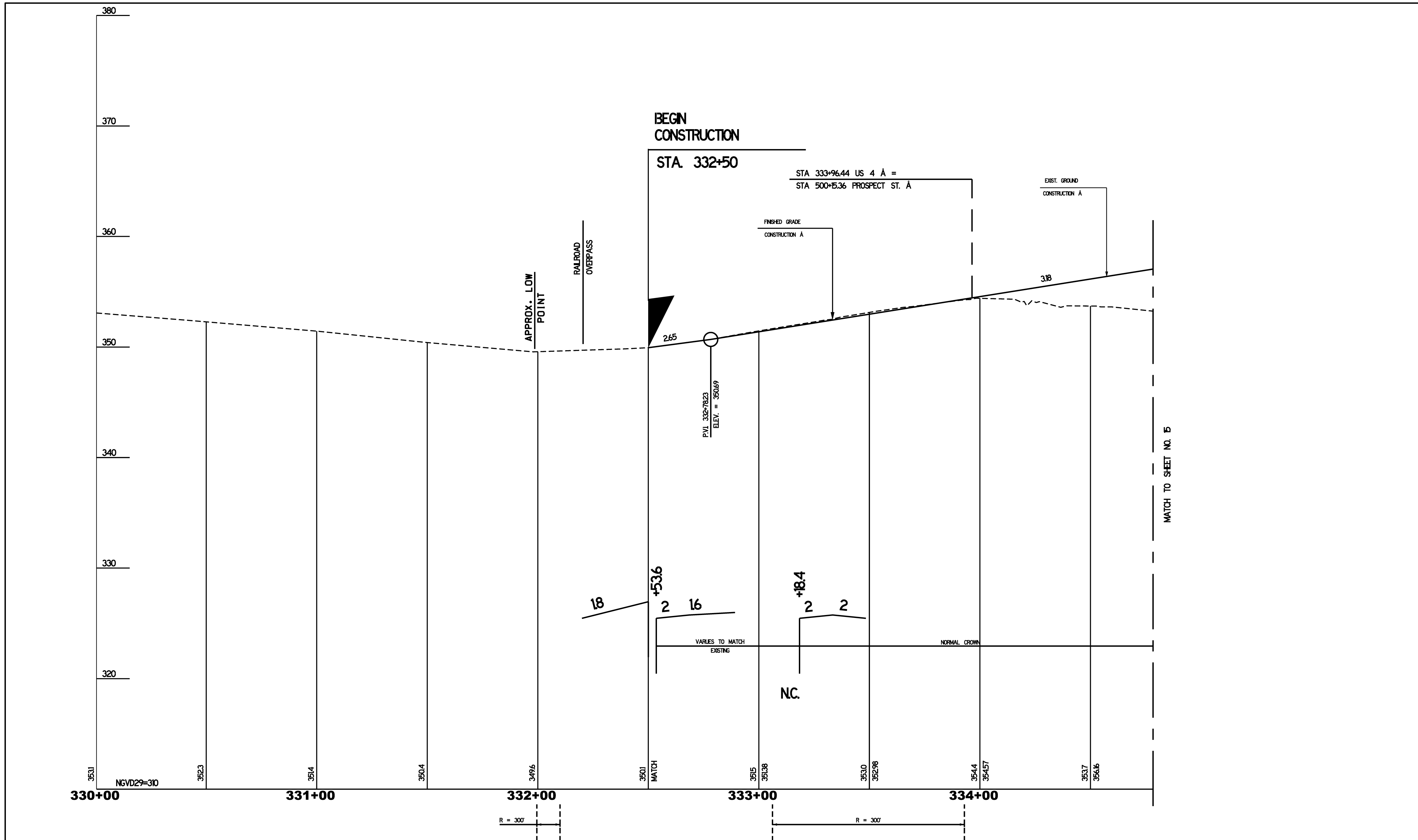
CERTAIN FONTS AND LINE STYLES HAVE BEEN COMPROMISED AS A RESULT OF AN AUTO-CAD TO MICROSTATION CONVERSION.

DUE TO TIME AND FINANCIAL CONSTRAINTS SOME OF THE ELEMENTS THAT HAVE BEEN COMPROMISED THAT SPECIFICALLY RELATE TO DESIGN ASPECTS HAVE BEEN LEFT IN THEIR COMPROMISED STATE.

THESE RIGHT OF WAY PLANS HAVE BEEN CREATED TO ASSIST IN THE PROCESS OF ACQUIRING THE LAND AND RIGHTS NECESSARY TO BUILD THE PROJECT AS DESIGNED IN THE STATE OF VERMONT.

FOR SPECIFIC DEIGN CRITERIA PLEASE REFER TO THE STATE OF NEW HAMPSHIRE DEPARTMENT OF TRANSPORTATION CONSTRUCTION PLAN SET.

PROJECT NAME:	HARTFORD - LEBANON	FILE NAME:	r07b284 ty2dgn	PLOT DATE:	11-APR-2012
PROJECT NUMBER:	BRF A000 627	PROJECT LEADER:	S. FARNSWORTH / VT.	DRAWN BY:	
		DESIGNED BY:		CHECKED BY:	
					ROW SHEET 3 OF 10



BEGIN
CONSTRUCTION

STA. 332+50

STA 333+96.44 US 4 A =
STA 500+5.36 PROSPECT ST. A

EXIST. GROUND
CONSTRUCTION A

FINISHED GRADE
CONSTRUCTION A

RAILROAD
OVERPASS

APPROX. LOW
POINT

P.V.I. 332+78.23
ELEV. = 350.69

MATCH TO SHEET NO. B

VARIES TO MATCH
EXISTING

NORMAL CROWN

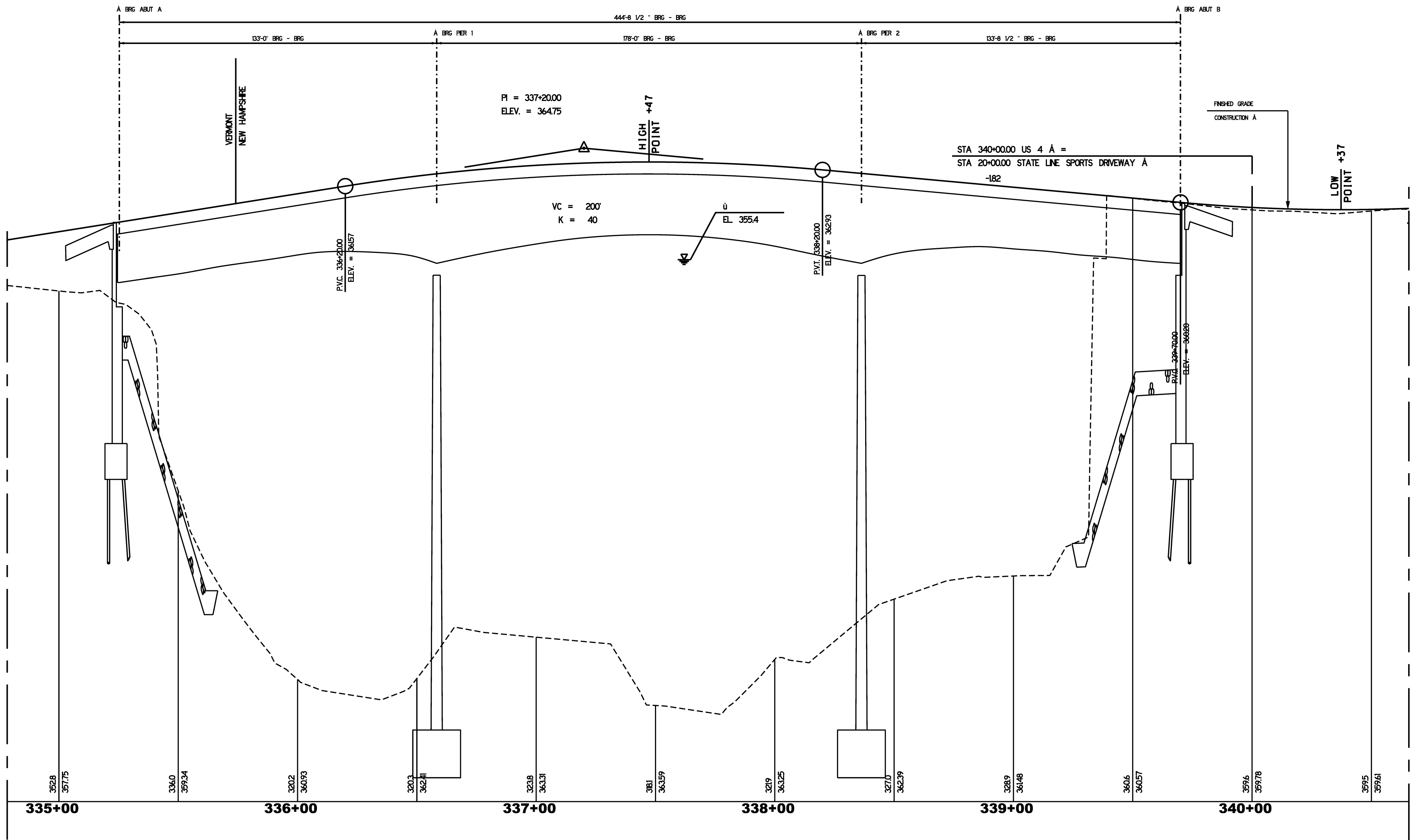
NC.

SCALE:
1" = 20' HORIZ
1" = 4' VERT.

PROJECT NAME: HARTFORD - LEBANON	PLOT DATE: 11-APR-2012
PROJECT NUMBER: BRP A000 (627)	DRAWN BY:
FILE NAME: r07b284 prol.dgn	CHECKED BY:
PROJECT LEADER: S. FARNSWORTH / VT.	ROW SHEET 4 OF 10
DESIGNED BY:	

MATCH TO SHEET NO. 14

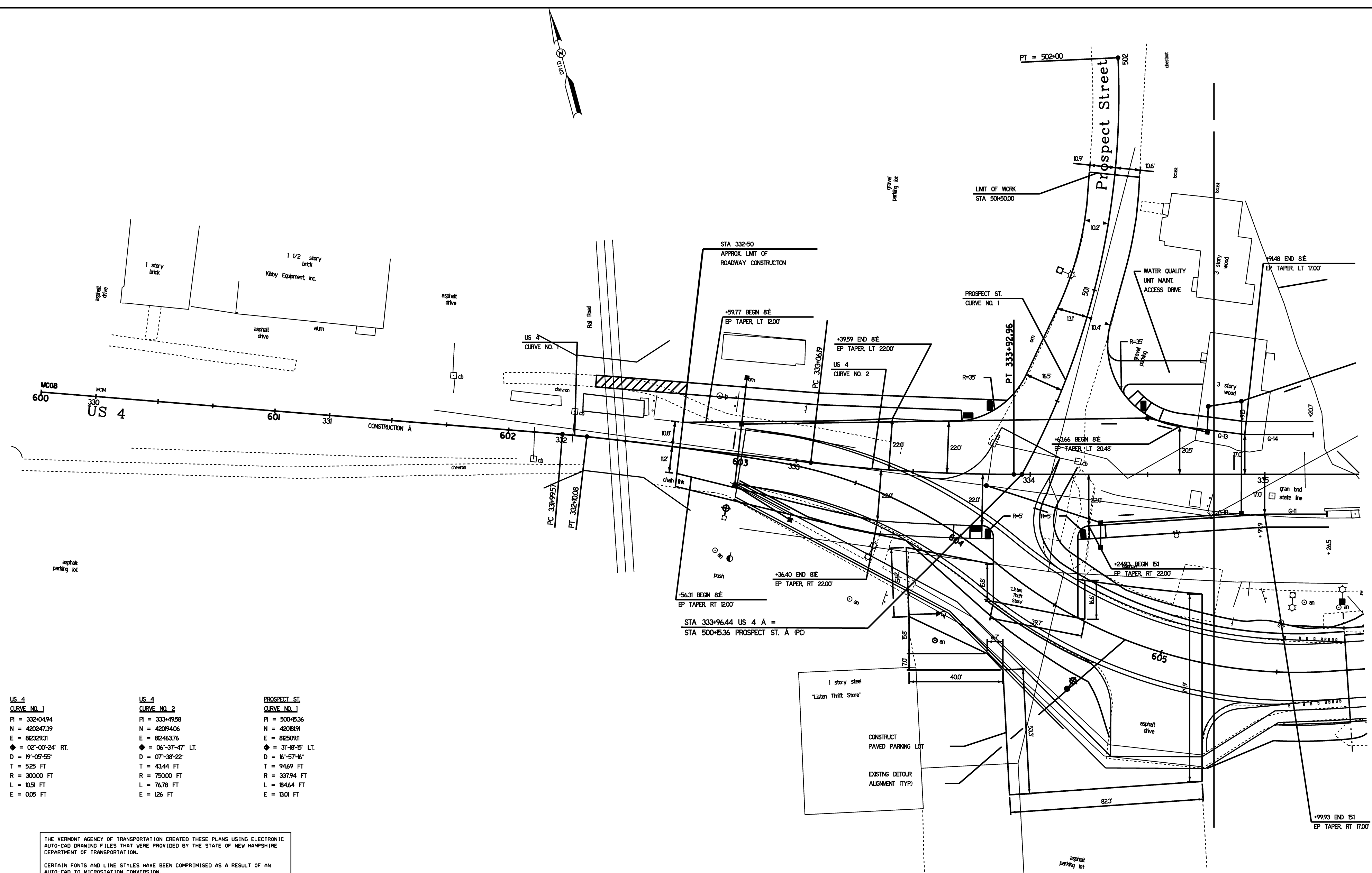
MATCH TO SHEET NO. 16



SCALE
 1" = 20' HORIZ.
 1" = 4' VERT.

PROJECT NAME: HARTFORD - LEBANON	
PROJECT NUMBER: BRF A000 (627)	
FILE NAME:	PLOT DATE: 11-APR-2012
PROJECT LEADER: S. FARNSWORTH / VT.	DRAWN BY:
DESIGNED BY:	CHECKED BY:
	ROW SHEET 5 OF 10

to
White River Jct



US 4 CURVE NO. 1	US 4 CURVE NO. 2	PROSPECT ST. CURVE NO. 1
PI = 332+0494	PI = 333+4958	PI = 500+536
N = 420247.39	N = 4209406	N = 4208191
E = 82329.31	E = 82463.76	E = 82509.11
◆ = 02°-00'-24" RT.	◆ = 06°-37'-47" LT.	◆ = 31°-48'-45" LT.
D = 19°-05'-55"	D = 07°-38'-22"	D = 16°-57'-46"
T = 525 FT	T = 4344 FT	T = 9469 FT
R = 300.00 FT	R = 750.00 FT	R = 33794 FT
L = 10.51 FT	L = 76.78 FT	L = 18464 FT
E = 0.05 FT	E = 126 FT	E = 13.01 FT

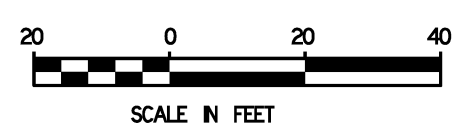
THE VERMONT AGENCY OF TRANSPORTATION CREATED THESE PLANS USING ELECTRONIC AUTO-CAD DRAWING FILES THAT WERE PROVIDED BY THE STATE OF NEW HAMPSHIRE DEPARTMENT OF TRANSPORTATION.

CERTAIN FONTS AND LINE STYLES HAVE BEEN COMPROMISED AS A RESULT OF AN AUTO-CAD TO MICROSTATION CONVERSION.

DUE TO TIME AND FINANCIAL CONSTRAINTS SOME OF THE ELEMENTS THAT HAVE BEEN COMPROMISED THAT SPECIFICALLY RELATE TO DESIGN ASPECTS HAVE BEEN LEFT IN THEIR COMPROMISED STATE.

THESE RIGHT OF WAY PLANS HAVE BEEN CREATED TO ASSIST IN THE PROCESS OF ACQUIRING THE LAND AND RIGHTS NECESSARY TO BUILD THE PROJECT AS DESIGNED IN THE STATE OF VERMONT.

FOR SPECIFIC DESIGN CRITERIA PLEASE REFER TO THE STATE OF NEW HAMPSHIRE DEPARTMENT OF TRANSPORTATION CONSTRUCTION PLAN SET.



ALIGNMENT SHEET	
PROJECT NAME: HARTFORD - LEBANON	
PROJECT NUMBER: BRF A000 (627)	
FILE NAME: r07b284 alidgn	PLOT DATE: 11-APR-2012
PROJECT LEADER: S. FARNSWORTH / VT.	DRAWN BY: M R
DESIGNED BY:	CHECKED BY: J B
	ROW SHEET 6 OF 10

Align-1

US 4 E:

- B1 STA 332+75.0, LT 12.9' TO STA 332+75.0, RT 13.3'
CONSTRUCT 23' x 15" RCP
CONSTRUCT CB-B, ECCENTRIC CONE @ +75.0, RT 13.3'
15" INV. OUT = 345.09
15" INV. IN = 345.34
GRATE ELEV. = 350.41
- B2 STA 334+50.0, LT 24.0' TO STA 332+75.0, LT 12.9'
CONSTRUCT 170' x 15" RCP
CONSTRUCT CB-B @ +75.0, LT 12.9'
15" INV. OUT = 344.65
15" INV. IN (S) = 344.90
12" INV. IN (N) = 346.21
GRATE ELEV. = 350.22
- B3 STA 332+75.0, LT 12.9' TO STA 332+75.0, LT 32.8'
CONSTRUCT 16' x 12" PLASTIC PIPE (SMOOTH INTERIOR)
CONSTRUCT CB-B @ +75.0, LT 32.8'
12" INV. OUT = 347.14
GRATE ELEV. = 351.27
- B4 STA 332+75.0, RT 13.3' TO STA 333+00.0, RT 27.5'
CONSTRUCT 25' x 12" RCP
CORE 12" OPENING IN RETAINING WALL (SUBSIDIARY)
CONSTRUCT SLAB TOP CB-B @ +00.0, RT 27.5'
12" INV. OUT = 346.50
GRATE ELEV. = 352.54
- B5 STA 334+90.0, RT 16.7' TO STA 334+30.0, RT 20.7'
CONSTRUCT 57' x 18" RCP
CONSTRUCT CB-F @ +30.0, RT 20.7'
18" INV. OUT = 344.07
15" INV. IN (W) = 344.32
12" INV. IN (S) = 350.98
GRATE ELEV. = 354.99
- B6 STA 334+75.6, LT 18.0' TO STA 334+50.0, LT 24.0'
CONSTRUCT 23' x 15" RCP
CONSTRUCT CB-F @ +50.0, LT 24.0'
15" INV. OUT = 343.55
15" INV. IN = 343.80
GRATE ELEV. = 355.56
- B7 STA 334+75.6, LT 29.0' TO STA 334+75.6, LT 18.0'
CONSTRUCT 7' x 15" PLASTIC PIPE (SMOOTH INTERIOR)
CONSTRUCT CB-F @ +75.6, LT 18.0'
15" INV. OUT = 343.18
15" INV. IN = 343.43
GRATE ELEV. = 356.49
- B8 STA 334+90.0, LT 31.2' TO STA 334+75.6, LT 29.0'
CONSTRUCT 11' x 15" PLASTIC PIPE (SMOOTH INTERIOR)
CONSTRUCT WOU @ +75.6, LT 29.0'
15" INV. OUT = 342.89
15" INV. IN = 343.14
GRATE ELEV. = 357.04
- B9 STA 334+90.0, LT 31.2' TO STA 334+90.0, RT 16.7'
CONSTRUCT 44' x 18" RCP
CONSTRUCT CB-F @ +90.0, RT 16.7'
18" INV. OUT = 343.53
18" INV. IN = 343.78
GRATE ELEV. = 356.98
- B10 STA 335+47.6, LT 50.5' TO STA 334+90.0, LT 31.2'
CONSTRUCT 59' x 24" PIPE FOR SLOPE DRAIN
CONSTRUCT 24" ALUMINIZED STEEL END SECTION @ +47.6, LT 50.5'
INV. @ PIPE = 326.50
CONSTRUCT CLASS B STONE FILL AT PIPE OUTLET
(SEE DETAIL SHEET XX)
CONSTRUCT DMH @ +90.0, LT 31.2'
24" INV. OUT = 342.08
18" INV. IN (S) = 342.58
15" INV. IN (W) = 342.83
GRATE ELEV. = 356.17
- B11 STA 340+23.0, LT 16.0' TO STA 339+75.0, LT 16.0'
CONSTRUCT 45' x 15" RCP
CONSTRUCT DI-B @ +75.0, LT 16.0'
15" INV. OUT = 354.36
GRATE ELEV. = 359.68
- B12 STA 340+37.0, LT 16.0' TO STA 340+23.0, LT 16.0'
CONSTRUCT 10' x 15" RCP
CONSTRUCT CB-B @ +23.0, LT 16.0'
15" INV. OUT = 353.61
15" INV. IN = 353.86
GRATE ELEV. = 359.18

US 4 E:

- B13 STA 340+37.0, RT 16.0' TO STA 340+37.0, LT 16.0'
CONSTRUCT 28' x 15" RCP
CONSTRUCT CB-B @ +37.0, LT 16.0'
15" INV. OUT = 352.38
15" INV. IN (E) = 353.50
15" INV. IN (W) = 353.50
GRATE ELEV. = 359.15
- B14 STA 340+37.0, LT 16.0' TO STA 340+57.0, LT 16.0'
CONSTRUCT 16' x 15" RCP
CONSTRUCT CB-B @ +57.0, LT 16.0'
15" INV. OUT = 354.02
GRATE ELEV. = 359.34
- B15 STA 340+21.0, RT 16.0'
CONSTRUCT CB-B @ +21.0, RT 16.0'
CONNECT EXIST. PIPE (SUBSIDIARY)
CONSTRUCT CLASS C STONE FILL AT PIPE OUTLET
(SEE DETAIL SHT. NO. XX)
EXIST. 15" INV. OUT = 351.62
15" INV. IN = 351.87
GRATE ELEV. = 359.19
- B16 STA 340+21.0, RT 16.0' TO STA 340+37.0, RT 16.0'
CONSTRUCT 12' x 15" RCP
CONSTRUCT CB-B, ECCENTRIC CONE @ +37.0, RT 16.0'
15" INV. OUT = 351.99
15" INV. IN (N) = 352.24
15" INV. IN (E) = 353.50
GRATE ELEV. = 359.15
- B17 STA 340+37.0, RT 16.0' TO STA 340+57.0, RT 16.0'
CONSTRUCT 16' x 15" RCP
CONSTRUCT CB-B @ +57.0, RT 16.0'
15" INV. OUT = 353.89
GRATE ELEV. = 359.21
- B18 STA 74+25.0, RT 15.5' TRANS. ST. DRIVE @ TO STA 341+92.1, RT 17.3'
CONSTRUCT 79' x 30" PLASTIC PIPE (CORR. INTERIOR)
CONSTRUCT 5' DIA. CB-F @ +92.1, RT 17.3'
30" INV. OUT = 353.25
30" INV. IN = 355.83
GRATE ELEV. = 362.36
- B19 STA 341+92.1, RT 17.3' TO STA 342+03.0, RT 16.0'
CONSTRUCT 6' x 30" RCP
CONSTRUCT 5' DIA. CB-F @ +03.0, RT 16.0'
30" INV. OUT = 355.94
30" INV. IN = 356.19
GRATE ELEV. = 362.86
- B20 STA 74+08.5, LT 113.5' TRANSFER STA. DR. @ TO STA 341+94.3, LT 6.0'
CONSTRUCT 275' x 36" PLASTIC PIPE (CORR. INTERIOR)
CONSTRUCT 36" ALUMINIZED STEEL END SECTION @ +08.5, LT 113.5'
INV. @ PIPE = 330.94
CONSTRUCT CLASS B STONE FILL AT PIPE OUTLET
(SEE DETAIL SHT. NO. XX)
CONSTRUCT 5' DIA. DMH @ +94.3 LT 6.0'
36" INV. OUT = 352.65
36" INV. IN = 353.65
GRATE ELEV. = 362.86
- B21 NOT USED
- B22 STA 342+28.0, LT 6.0' TO STA 342+28.0, LT 16.0'
CONSTRUCT 35' x 36" PLASTIC PIPE (CORR. INTERIOR)
CONSTRUCT 5' DIA. CB-F @ +28.0, LT 16.0'
36" INV. OUT = 355.86
36" INV. IN = 356.11
GRATE ELEV. = 364.39
- B23 STA 342+03.0, RT 16.0' TO STA 342+53.9, RT 16.0'
CONSTRUCT 46' x 30" RCP
CONSTRUCT 5' DIA. CB-F @ +53.9, RT 16.0'
CONNECT EXIST. PIPE (SUBSIDIARY)
30" INV. OUT = 356.70
24" INV. IN (E) = 359.36
EXIST. 12" INV. IN (S) = 361.73
GRATE ELEV. = 365.49
- B24 NOT USED

US 4 E:

- B25 STA 343+25.0, RT 15.0' TO STA 343+80.0, RT 14.4'
CONSTRUCT 50' x 24" PLASTIC PIPE (CORR. INTERIOR)
CONSTRUCT ECCENTRIC CONE CB-F @ +80.0, RT 14.4'
CONNECT EXIST 6" PVC (SUBSIDIARY)
24" INV. OUT = 367.00
24" INV. IN (E) = 368.25
15" INV. IN (N) = 369.00
GRATE ELEV. = 374.85
- B26 STA 343+80.0, RT 14.4' TO STA 343+80.0, LT 14.0'
CONSTRUCT 25' x 15" RCP
CONSTRUCT CB-F @ +80.0, LT 14.0'
15" INV. OUT = 369.49
GRATE ELEV. = 374.81
- B27 STA 346+18.3, RT 18.4' TO STA 346+18.3, RT 28.0'
CONSTRUCT 5' x 15" PLASTIC PIPE (SMOOTH INTERIOR)
CONSTRUCT CB-F @ +18.3, RT 28.0'
15" INV. OUT = 388.25
GRATE ELEV. = 393.01
- B28 STA 343+80.0, RT 14.4' TO STA 346+18.3, RT 18.4'
CONSTRUCT 234' x 24" PLASTIC PIPE (CORR. INTERIOR)
CONSTRUCT 6' DIA. DMH @ +18.3, RT 18.4"
CONNECT EXIST. PIPE (SUBSIDIARY)
24" INV. OUT = 384.50
15" INV. IN (N) = 387.75
24" INV. IN (E) = 384.70
15" INV. IN (W) = 388.15
EXIST. 15" INV. IN (S) = 388.15
GRATE ELEV. = 393.13
- B29 STA 346+18.3, RT 18.4' TO STA 346+18.3, LT 13.7'
CONSTRUCT 28' x 15" RCP
CONSTRUCT CB-F @ +18.3, LT 13.7'
15" INV. OUT = 388.05
GRATE ELEV. = 393.39
- B30 STA 347+68.0, RT 18.4' TO STA 347+74.0, RT 23.8'
CONSTRUCT 4' x 15" RCP
CONSTRUCT CB-B @ +74.0, RT 23.8'
15" INV. OUT = 392.27
GRATE ELEV. = 397.59
- B31 STA 347+68.0, RT 18.4' TO STA 347+95.8, LT 19.1'
CONSTRUCT 43' x 18" RCP
CONSTRUCT CB-B @ +95.8, LT 19.1'
CONNECT EXIST. PIPE (SUBSIDIARY)
18" INV. OUT = 391.65
EXIST. 18" INV. IN = 391.90
GRATE ELEV. = 397.95
- B32 STA 334+30.0, RT 20.7' TO STA 333+81.7, RT 4.9'
CONSTRUCT 47' x 15" RCP
CONSTRUCT DMH @ +81.7, RT 4.9'
CONNECT EXIST. PIPE (SUBSIDIARY)
15" INV. OUT = 344.56
EXIST. 15" INV. IN = 344.81
GRATE ELEV. = 353.76
- B33 STA 334+30.0, RT 20.7' TO STA 334+30.0, RT 31.2'
CONSTRUCT 7' x 12" PLASTIC PIPE (SMOOTH INTERIOR)
CONSTRUCT CB-F @ +30.0, RT 31.2'
12" INV. OUT = 351.15
GRATE ELEV. = 355.28
- B34 STA 342+53.9, RT 16.0' TO STA 343+25.0, RT 15.0'
CONSTRUCT 66' x 24" PLASTIC PIPE (CORR. INTERIOR)
CONSTRUCT CB-F @ +25.0, RT 15.0'
24" INV. OUT = 362.90
24" INV. IN = 364.29
GRATE ELEV. = 370.36
- B35 STA 346+18.3, RT 18.4' TO STA 347+68.0, RT 18.4'
CONSTRUCT 146' x 24" PLASTIC PIPE (CORR. INTERIOR)
CONSTRUCT 5' DIA. DMH @ +68.0, RT 18.4'
24" INV. OUT = 390.70
18" INV. IN (E) = 391.20
15" INV. IN (S) = 392.15
GRATE ELEV. = 397.56

TRANSFER STATION DRIVEWAY @:

- T1 STA 73+74.0, RT 15.5' TO STA 74+25.0, RT 15.5'
CONSTRUCT 46' x 30" PLASTIC PIPE (CORR. INTERIOR)
CONSTRUCT 5' DIA. DMH @ +25.0, RT 15.5'
30" INV. OUT = 347.45
30" INV. IN = 350.39
GRATE ELEV. = 355.43
- T2 STA 73+74.0, RT 15.5' TO STA 73+74.0, LT 11.0'
CONSTRUCT 22' x 12" PLASTIC PIPE (SMOOTH INTERIOR)
CONSTRUCT CB-F @ +74.0, LT 11.0'
12" INV. OUT = 347.80
GRATE ELEV. = 352.39
- T3 STA 73+19.0, RT 34.0' TO STA 73+74.0, RT 15.5'
CONSTRUCT 54' x 30" PLASTIC PIPE (CORR. INTERIOR)
CONSTRUCT 30" ALUMINIZED STEEL END SECTION @ +19.0, RT 34.0'
INV. @ PIPE = 342.00
CONSTRUCT CLASS C STONE FILL AT PIPE OUTLET
(SEE DETAIL SHT. NO. XX)
CONSTRUCT 5' DIA. DMH @ +74.0, RT 15.5'
30" INV. OUT = 344.00
30" INV. IN (N) = 346.00
12" INV. IN (W) = 347.50
GRATE ELEV. = 351.85
- T4 STA 72+51.4, RT 27.7' TO STA 72+51.4, LT 11.0'
CONSTRUCT 37' x 12" PLASTIC PIPE (SMOOTH INTERIOR)
CONSTRUCT 12" ALUMINIZED STEEL END SECTION @ +51.4, RT 27.7'
INV. @ PIPE = 342.00
CONSTRUCT CLASS C STONE FILL AT PIPE OUTLET
(SEE DETAIL SHT. NO. XX)
CONSTRUCT CB-B @ +51.4, LT 11.0'
12" INV. OUT = 343.00
GRATE ELEV. = 347.05
- T5 STA 71+50.0, LT 56.1' TO STA 71+50.0, RT 50.0'
CONSTRUCT 104' x 30" RCP
CONSTRUCT 30" RC END SECTION @ +50.0, LT 56.1'
INV. @ PIPE = 337.00
CONSTRUCT OUTLET CONTROL STRUCTURE @ +50.0, RT 50.0'
(SEE DETAIL SHEET XX)
15" INV. OUT = 339.00
GRATE ELEV. = 344.40

CRAFTS AVENUE @:

- C1 STA 342+28.0, LT 16.0' US 4 @ TO STA 400+28.0, LT 18.2'
CONSTRUCT 89' x 36" PLASTIC PIPE (CORR. INTERIOR)
CONSTRUCT 5' DIA. CB-F @ +28.0, LT 18.2'
36" INV. OUT = 361.78
36" INV. OUT = 362.03
GRATE ELEV. = 371.85
- C2 STA 400+58.0, LT 2.4' TO STA 400+58.0, RT 14.1'
CONSTRUCT 12' x 15" RCP
CONSTRUCT CB-F @ +58.0, RT 14.1'
15" INV. OUT = 366.62
GRATE ELEV. = 373.94
- C3 STA 400+58.0, LT 2.4' TO STA 400+58.0, LT 13.1'
CONSTRUCT 7' x 15" RCP
CONSTRUCT CB-F @ +58.0, LT 13.1'
15" INV. OUT = 368.64
GRATE ELEV. = 373.96
- C4 STA 400+37.1, LT 3.9' TO STA 400+58.0, LT 2.4'
CONSTRUCT 16' x 36" PLASTIC PIPE (CORR. INTERIOR)
CONSTRUCT 5' DIA. DMH @ +58.0, LT 2.4'
CONNECT EXIST. PIPE (SUBSIDIARY)
36" INV. OUT = 364.75
EXIST. 36" INV. IN (N) =
15" INV. IN (W) = 368.45
15" INV. IN (E) = 366.45
GRATE ELEV. = 374.20
- C5 STA 400+28.0, LT 18.2' TO STA 400+37.1, LT 3.9'
CONSTRUCT 12' x 36" PLASTIC PIPE (CORR. INTERIOR)
CONSTRUCT 6' DIA. DMH @ +37.1, LT 3.9'
36" INV. OUT = 362.74
36" INV. IN = 363.04
GRATE ELEV. = 372.12

PROJECT NAME: HARTFORD - LEBANON

PROJECT NUMBER: BRF A000 (627)

FILE NAME: r07b284Drain Notes.dgn

PROJECT LEADER: S. FARNSWORTH / VT.

DESIGNED BY:

PLOT DATE: 11-APR-2012

DRAWN BY: M R

CHECKED BY: J B

ROW SHEET 7 OF 10

US 4 R:

- E1 STA 333+81.7, RT 4.9' TO STA 333+84.2, LT 13.2'
REMOVE 17' x 10" CLAY
REMOVE CB @ +84.2, LT 13.2'
- E2 STA 333+84.2, LT 13.2' TO STA 334+20.4, LT 5.5'
REMOVE 33' x 10" CLAY
REMOVE CB @ +20.4, LT 5.5'
- E3 STA 335+63.1, LT 26.6' TO STA 334+77.2, RT 17.9'
REMOVE 95' x 18" CMP
REMOVE DMH @ +77.2, RT 17.9'
- E4 STA 340+21.0, RT 16.0' TO STA 340+22.2, RT 12.9'
REMOVE 4' x 15" SPP
REMOVE CB @ +22.2, RT 12.9'
- E5 STA 340+22.2, RT 12.9' TO STA 341+15.4, RT 17.5'
REMOVE 89' x 15" STEEL PIPE
REMOVE CB @ +15.4, RT 17.5'
- E6 STA 73+08.5, LT 113.5' TRANSFER STA. DR. U+E100 TO STA 341+95.7,
LT 8.3'
REMOVE 278' x 18" CMP (SUBSIDIARY TO NOTE B20)
REMOVE DMH @ +95.7, LT 8.3' (SUBSIDIARY TO NOTE B20)
- E7 STA 341+95.7, LT 8.3' TO STA 342+16.2, LT 8.4'
REMOVE 17' x 12" PVC (SUBSIDIARY TO NOTE B21)
REMOVE CB @ +16.2, LT 8.4' (SUBSIDIARY TO NOTE B21)
- E8 STA 341+15.4, RT 17.5' TO STA 342+33.0, LT 8.8'
REMOVE 120' x 15" STEEL PIPE
REMOVE DMH @ +33.0, LT 8.8' (SUBSIDIARY TO NOTE B21 AND B24)
- E9 STA 341+95.7, LT 8.3' TO STA 342+53.9, RT 17.6'
REMOVE 60' OF PIPE
REMOVE CB @ +53.9, RT 17.6' (SUBSIDIARY TO NOTE B23)
- E12 STA 343+76.6, RT 14.4' TO STA 343+75.8, LT 14.7'
REMOVE 25' x 12" STEEL PIPE
REMOVE CB @ +75.8, LT 14.7'
- E13 STA 343+51.9, RT 14.6' TO STA 343+76.6, RT 14.4'
REMOVE 23' x 15" CMP (LOCATION OF END OF PIPE UNKNOWN)
REMOVE CB @ +76.6, RT 14.4'
- E15 STA 342+33.0, LT 8.8' TO STA 343+53.8, LT 8.6'
REMOVE 102' OF PIPE (SUBSIDIARY TO NOTE B24)
REMOVE 16' OF PIPE
REMOVE DMH @ +53.8, LT 8.6'
- E16 STA 342+31.4, RT 17.2'
REMOVE SMH
- E17 STA 342+31.8, RT 19.3'
RECONSTRUCT SMH
COVER ELEV. = 364.97
- E18 STA 342+78.7, RT 5.6'
RECONSTRUCT SMH
COVER ELEV. = 367.36
- E19 STA 342+53.9, RT 17.6' TO STA 342+70.4, RT 13.2'
REMOVE 15' x 12" PVC (LOCATION OF END OF PIPE UNKNOWN)
- E20 STA 343+53.8, LT 8.6' TO STA 343+75.8, LT 14.7'
REMOVE 19' x 8" CLAY
- E21 STA 343+53.8, LT 8.6' TO STA 345+25.7, LT 12.0'
REMOVE 171' OF PIPE (LOCATION OF END OF PIPE UNKNOWN)
- E22 STA 343+76.6, RT 14.4' TO STA 346+05.3, RT 10.4'
REMOVE 225' x 12" STEEL PIPE
REMOVE DMH @ +05.3, RT 10.4'
- E23 STA 346+05.3, RT 10.4' TO STA 346+03.7, LT 13.9'
REMOVE 21' x 12" STEEL PIPE
REMOVE CB @ +03.7, LT 13.9'
- E24 STA 346+05.3, RT 10.4' TO STA 346+18.3, RT 18.4'
REMOVE 14' x 15" PSP
- E25 STA 347+63.6, RT 18.1' TO STA 347+88.7, RT 23.2'
REMOVE 24' x 18" PVC (LOCATION OF END OF PIPE UNKNOWN)
REMOVE CB @ +88.7, RT 23.2'
- E26 STA 347+88.7, RT 23.2' TO STA 347+95.8, LT 18.2'
REMOVE 38' x 18" PVC
REMOVE CB @ +95.8, LT 18.2' (SUBSIDIARY TO NOTE B31)

US 4 R:

- E27 STA 343+36.1, LT 7.5' TO STA 400+58.0, LT 2.4' CRAFTS AVE. U+E100
REMOVE 49' OF PIPE (SUBSIDIARY TO NOTE C4)
- E28 STA 334+77.2, RT 17.9' TO STA 333+81.7, RT 4.9'
REMOVE 95' x 15" CLAY PIPE
- E29 STA 342+86.43, LT 1.34'
RECONSTRUCT BURIED SMH

PROSPECT STREET R:

- E14 STA 501+00.1, RT 7.1'
ADJUST SMH
COVER ELEV. = 354.71

CRAFTS AVENUE R:

- E10 STA 400+42.6, LT 3.4' TO STA 400+58.8, LT 10.7'
REMOVE 16' OF PIPE
REMOVE CB @ +58.8, LT 10.7' (SUBSIDIARY TO NOTE C3)
- E11 STA 343+75.8, LT 14.7' TO STA 400+31.0, RT 17.0'
REMOVE 27' x 12" STEEL PIPE
REMOVE CB @ +31.0, RT 17.0'

PROJECT NAME:	HARTFORD - LEBANON	PLOT DATE:	11-APR-2012
PROJECT NUMBER:	BRF A000 (627)	DRAWN BY:	M R
FILE NAME:	r07b284Drain Notes.dgn	CHECKED BY:	J B
PROJECT LEADER:	S. FARNSWORTH / VT.	ROW SHEET	8 OF 10
DESIGNED BY:			

RIGHT - OF - WAY DETAIL SHEET

TABLE OF PROPERTY ACQUISITION

PARCEL NO.	PROPERTY OWNER	SHEET NO.	BEGINNING STATION	ENDING STATION	TAKE	REMAINDER	RIGHT			RECORDING DATA				REMARKS	
					AREA±	AREA±	TYPE	(T)(P)	AREA ±	TITLE	DATE	TOWN / CITY	BOOK		PAGE
1	LISTEN INC.		602+95 RT 604+15 RT	604+37 RT 606+35 RT			DETOUR DETOUR	(T) (T)	0.11 A 0.40 A		06/19/09 06/19/09	HARTFORD HARTFORD	441 441	789-781 789-781	PREVIOUSLY ACQUIRED FOR TEMP. PREVIOUSLY ACQUIRED FOR TEMP.
1A	LISTEN INC.	10	335+13.00 RT 334+04 RT 604+15 RT	335+83.81 RT± 606+35 RT	2,606 SF		DRIVE DETOUR	(T) (T)		WD		HARTFORD			EXT. OF PREV. ACQUIRED RIGHTS
1B		10	332+82 RT 602+95 RT	333+49 RT 604+37 RT			SLOPE DETOUR	(T) (T)	171 SF 0.11 A						EXT. OF PREV. ACQUIRED RIGHTS
2A	PROSPECT STREET PROPERTIES, INC.	10	334+63.67 RT	335+75.77 RT±	6,496 SF					WD		HARTFORD			INCLUDES STRUCTURE & APPURTENANCES
2B		10	334+30.99 LT	334+73.20 RT	1,877 SF					WD		HARTFORD			(NO STRUCTURE)
3A	PROSPECT STREET PROPERTIES II, INC.	10	332+97.61 LT 332+50 LT 332+50 LT 332+62 LT 332+60 LT 332+75 LT 333+76 LT 333+78 LT	333+97.14 LT 332+64 LT 332+63 LT 333+90 LT 333+88 LT			HWY. INSTALL & MAINTAIN DITCH & DRAINAGE DITCH & DRAINAGE INSTALL & MAINTAIN INSTALL & MAINTAIN REMOVE REMOVE	(P) (P) (P) (P) (P) (P) (T) (T)	525 SF 95 SF 126 SF 860 SF 1,239 SF	WDOE		HARTFORD			SIDEWALK SIDEWALK DIRECT INLET AND PIPE LIGHT POLE LANDSCAPING SHRUBS
3B		10	334+99 LT 335+09 LT 501+05 RT	335+47 LT± 335+51 LT± 501+20 RT			CONST. CHANNEL REMOVE	(T) (P) (T)	545 SF 545 SF						INCLUDES EC & PDF STOCKADE FENCE

TABLE OF REVISIONS

REVISION NO.	SHEET NO.	DESCRIPTION	DATE
1	9,10	PARCEL NO. 3 PROSPECT STREET PROPERTIES II, INC. ADD THE RIGHT "REMOVE (T)" FOR STOCKADE FENCE AT STA. 501+05 RT. ~ 501+20 RT. MADE BY: MR	04/06/12
		PER C.O. 9765 APPROVED BY: HP	

PLAN LEGEND

	EXISTING RIGHT-OF-WAY		TOE OF SLOPE	EC	-EROSION CONTROL
	TAKING WITH ACCESS		TOP OF CUT	(P)	-PERMANENT
	TAKING WITHOUT ACCESS		SLOPE RIGHT	(T)	-TEMPORARY
	CLEAR ZONE		CONSTRUCTION RIGHT	DR.	-DRAINAGE RIGHT
	PROPERTY LINE		PROJECT DEMARCATION FENCE	DIT.	-DITCHING RIGHT
				CH.	-CHANNEL RIGHT
				DRIVE	-DRIVE RIGHT
				CUL.	-CULVERT RIGHT
				C&T	-CLEARING & TRIMMING RIGHT
				SR	-SLOPE RIGHT
				UE	-UTILITY EASEMENT

APPROVED: HARRY PETROVS DATE: 01-17-12
CHIEF, PLANS & TITLES

PLOT DATE 04/05/12

PROJECT NAME: **HARTFORD-LEBANON**
PROJECT NUMBER: **BRF A000(627)**

FILE NAME: **r07b284detailsheet** PLOT DATE:
PROJECT LEADER: **S. FARNSWORTH** DRAWN BY: **MR**
DESIGNED BY: **NH - DOT** CHECKED BY: **JB**
R.O.W. DETAIL SHEET #1 ROW SHEET 9 OF 10

BEGIN ROW PROJECT
 STA. 332+50.00
 45.12' LT.

**Prospect Street
 Properties II, Inc.**

**Prospect Street
 Properties II, Inc.**

**Prospect Street
 Properties II, Inc.**

**Prospect Street
 Properties II, Inc.**

**Prospect Street
 Properties, Inc.**

Listen Inc.

Listen Inc.

State of Vermont - Lessor

Washington County Railroad
 Lessee

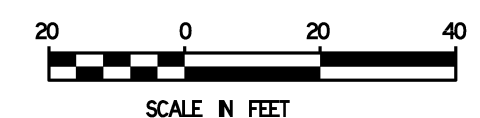
LINES SHOWN ON THIS PLAN AS EXISTING
 PROPERTY LINES P/L ARE BELIEVED TO
 BE ACCURATE BUT SHOULD NOT BE RELIED
 UPON FOR PURPOSES UNRELATED TO THE
 STATE OF VERMONT'S ACQUISITION OF LAND
 AND RIGHTS FOR THIS PROJECT.

TEMPORARY CONSTRUCTION LIMIT
 FOR BRIDGE DETOUR
 PREVIOUSLY ACQUIRED AND GRANT OF TEMPORARY RIGHTS
 RECORDED 6-19-09; BOOK 44; PAGES 789-781; IN THE TOWN
 OF HARTFORD LAND RECORDS.

TEMPORARY CONSTRUCTION LIMIT
 FOR BRIDGE DETOUR
 PREVIOUSLY ACQUIRED AND GRANT OF TEMPORARY RIGHTS
 RECORDED 6-19-09; BOOK 44; PAGES 789-781; IN THE TOWN
 OF HARTFORD LAND RECORDS.

END ROW PROJECT
 STA. 335+83.81 ±
 52.84' RT. ±

○ DENOTES TREE REMOVAL



PROJECT NAME:	HARTFORD-LEBANON
PROJECT NUMBER:	BRF A000 (627)
FILE NAME:	r07b284row.dgn
PROJECT LEADER:	S. FARNSWORTH / VT.
DESIGNED BY:	NH - DOT
PLOT DATE:	11-APR-2012
DRAWN BY:	M R
CHECKED BY:	J B
ROW SHEET	10 OF 10