

646.622 TEMPORARY 6" WHITE LINE, PAINT
 646.426 DURABLE 6" WHITE LINE, RECESSED POLYUREA
 646.428 DURABLE 6" WHITE LINE, RECESSED THERMOPLASTIC
 646.429 DURABLE 6" WHITE LINE, RECESSED EPOXY PAINT

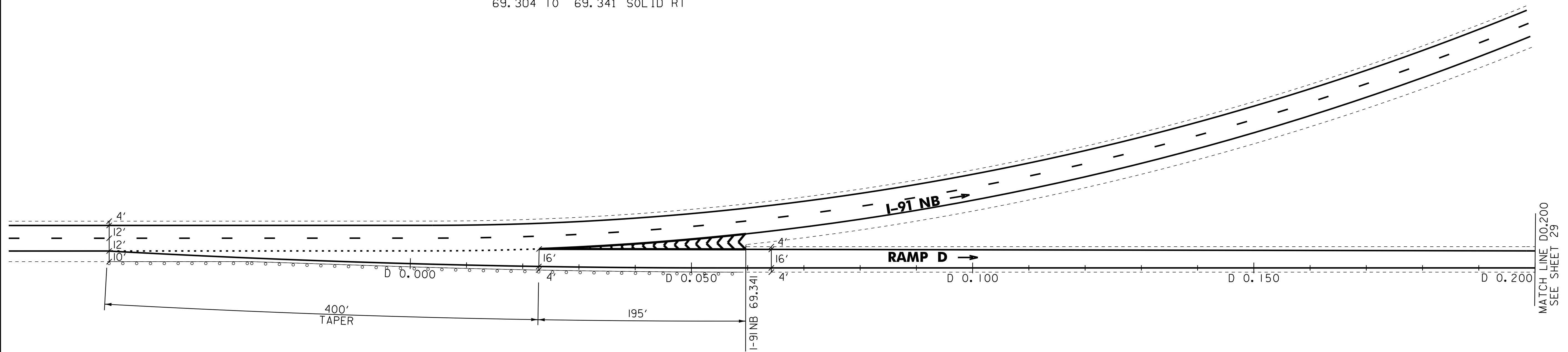
D 0.060 TO D 0.200 SOLID RT
 69.228 TO 69.304 DOTTED RT

646.632 TEMPORARY 6" YELLOW LINE, PAINT
 646.436 DURABLE 6" YELLOW LINE, RECESSED POLYUREA
 646.438 DURABLE 6" YELLOW LINE, RECESSED THERMOPLASTIC
 646.439 DURABLE 6" YELLOW LINE, RECESSED EPOXY PAINT

D 0.060 TO D 0.200 SOLID LT

646.662 TEMPORARY 12" WHITE LINE, PAINT
 646.466 DURABLE 12" WHITE LINE, RECESSED POLYUREA
 646.469 DURABLE 12" WHITE LINE, RECESSED EPOXY PAINT

D 0.023 TO D 0.060 SOLID LT
 D 0.023 TO D 0.060 SOLID LT (GORE STRIPES)
 69.304 TO 69.341 SOLID RT



NOT TO SCALE

- LEGEND**
- R = REMOVE EXISTING
 - S = SALVAGE
 - R&S = REMOVE AND SALVAGE
 - N = NEW
 - RET = RETAIN
 - B-B = BACK TO BACK
 - o— = EXISTING GUARDRAIL
 - b— = PROPOSED GUARDRAIL
 - YL = YELLOW LINE
 - WL = WHITE LINE

**EXIT 10
 NB OFF RAMP D DETAIL SHEET 1**

| | | |
|--------------------------------|-------------------------------------|------------------------------|
| PROJECT NAME: HARTLAND-NORWICH | FILE NAME: /pave/06a202/p06a202.dgn | PLOT DATE: 21-NOV-2012 11:45 |
| PROJECT NUMBER: IM 091-1(59) | PROJECT LEADER: PTS | DRAWN BY: WWG |
| | DESIGNED BY: NULL | CHECKED BY: PTS |
| | IPARM FILE NAME: 06A202_28 | SHEET 28 OF 60 |