

GPS CONTROL POINTS

HVCTRL #1

G 58
 NORTH = 441229.15
 EAST = 1691279.71
 ELEV. = 512.82

DESCRIBED BY NATIONAL GEODETIC SURVEY 1978 IN NORWICH. 0.2 MILE SOUTH ALONG STATE HIGHWAY 5 FROM THE POST OFFICE IN NORWICH TO THE MARK ON THE LEFT, 28 FEET EAST OF THE CENTER LINE OF THE HIGHWAY, 9 FEET NORTH OF A STREET LIGHT, 4.5 FEET WEST OF AN UNNUMBERED POWER POLE, AND 1 FOOT EAST OF THE NORTH END OF A CABLE GUARD RAIL. ADDITIONAL: TO REACH FROM THE INTERSECTION OF THE I-91 BRIDGES OVER VT ROUTE 10A IN NORWICH GO NORTH ALONG VT ROUTE 10A, WHICH BECOMES US ROUTE 5, FOR 0.3 MI (0.5 KM) TO THE SITE OF THE MARK ON THE RIGHT. THE MARK IS 8.5 M (27.9 FT) EAST OF THE CENTERLINE OF U S ROUTE 5, AND 1.4 M WEST OF POLE NO 8/50/5/2. THE CABLE GUARD RAIL IS NO LONGER THERE.

HVCTRL #2

PION
 NORTH = 439839.11
 EAST = 1691507.81
 ELEV. = 481.72

GENERAL LOCATION, NORWICH, VT. TO REACH FROM THE INTERSECTION OF THE I-91 BRIDGES OVER VT ROUTE 10A IN NORWICH GO NORTH ALONG VT ROUTE 10A FOR 0.1 MI (0.2 KM) TO THE SITE OF THE MARK ON THE LEFT SET IN THE MEDIAN SEPARATING THE VT ROUTE 10A SOUTH AND NORTH BOUND LANES. THE MARK IS SET IN THE TOP OF THE NORTHEAST CORNER OF A 1.4 M (4.6 FT) X 1.4 M (4.6 FT) CONCRETE DROP INLET. IT IS 45 CM EAST OF THE CENTER OF THE 60 CM SQUARE METAL GRATE, 1.9 M (6.2 FT) WEST OF THE EAST EDGE OF PAVEMENT OF THE VT ROUTE 10A NORTHBOUND LANE, 2.7 M (8.9 FT) EAST OF THE WEST EDGE OF PAVEMENT OF VT ROUTE 10A SOUTHBOUND LANE, 9.5 M (31.2 FT) WEST OF THE CENTER OF ANOTHER 60 CM DROP INLET, AND 7.7 M (25.3 FT) NORTH OF A TRAFFIC SIGN FOR US ROUTE 5 SOUTH. NOTE, THE MARK IS INTERVISIBLE WITH MARK G 58.

GPS CONTROL POINTS

HVCTRL #10

I 91 EXIT 12
 NORTH = 424609.55
 EAST = 1688199.98
 ELEV. = 555.80

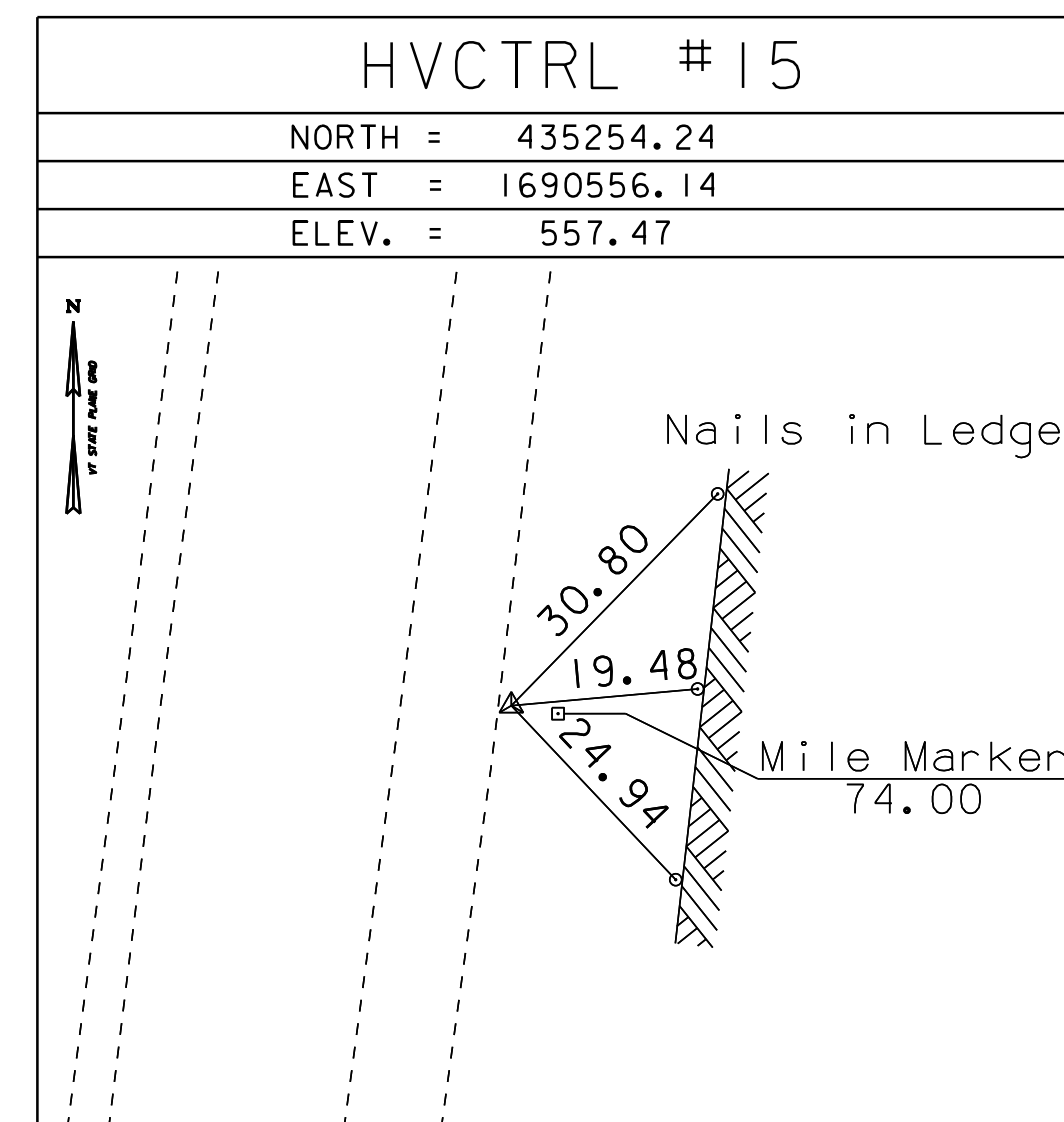
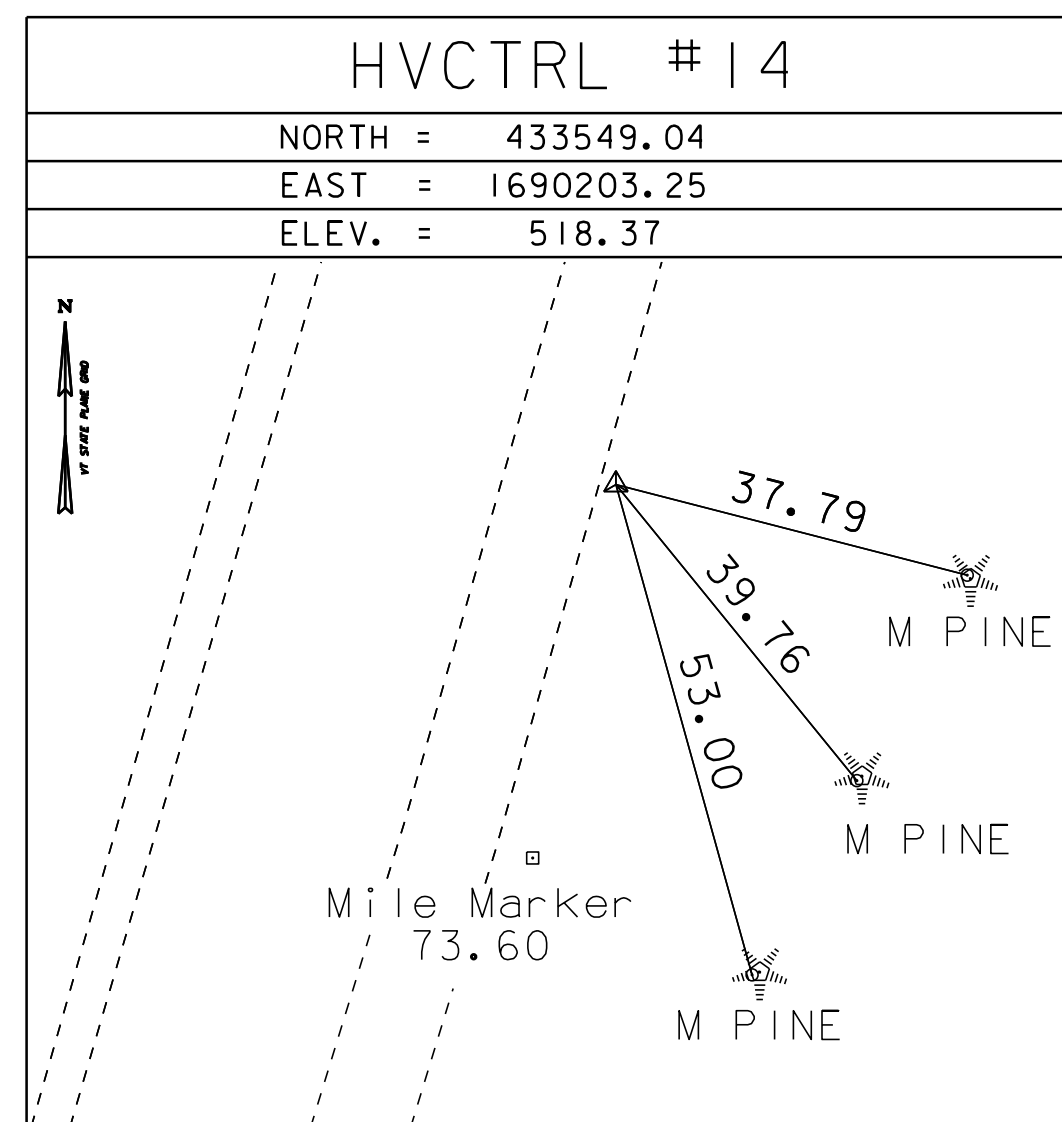
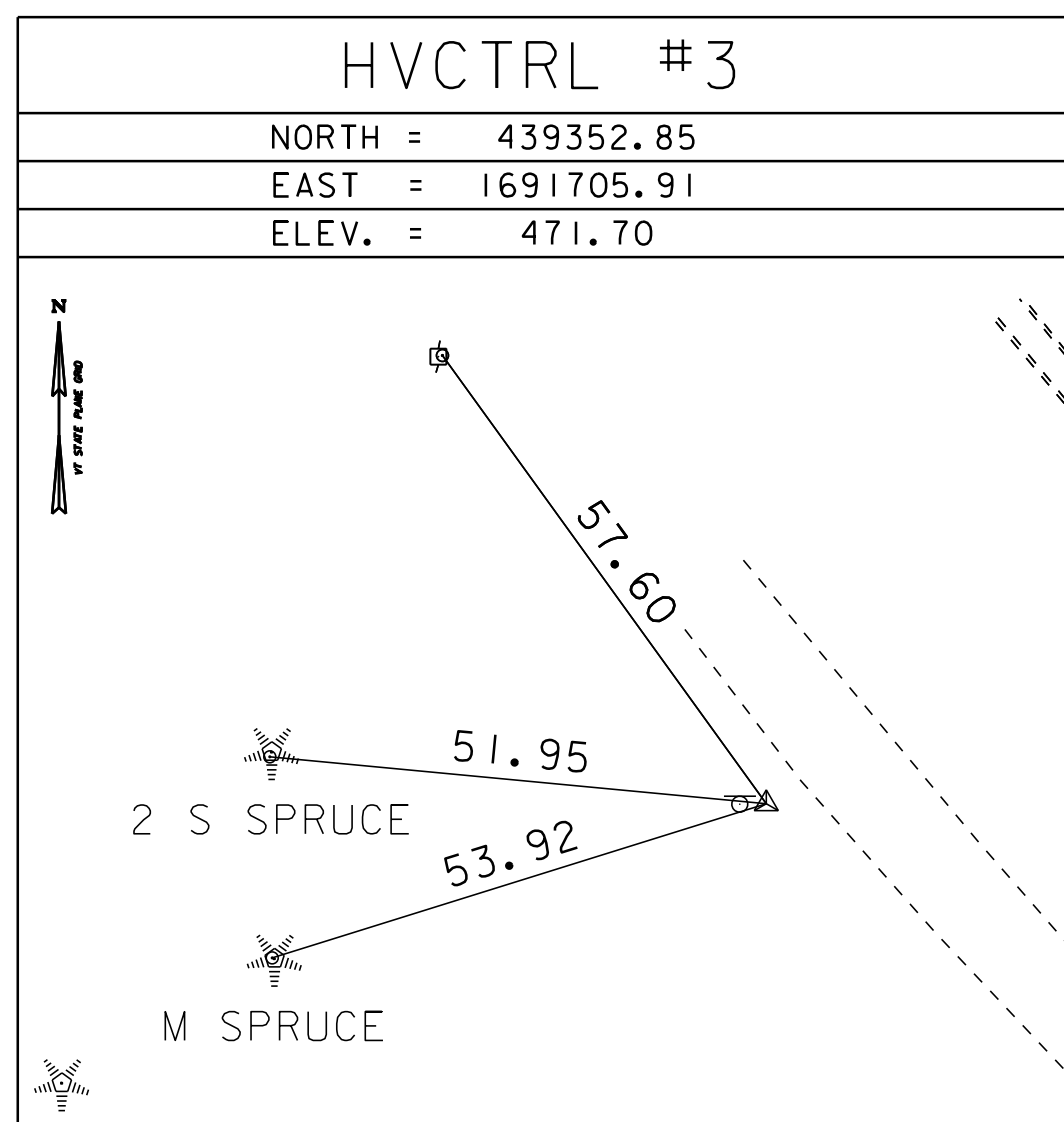
TO REACH FROM THE I-91 BRIDGES OVER BUGBEE STREET AT EXIT 12 GO SOUTH ALONG I-91 FOR 0.1 MI (0.2 KM) TO THE SITE OF THE MARK ON THE LEFT, EAST OF THE I-91 NORTHBOUND LANE, IN A GRASS TRIANGLE FORMED BY I-91 NORTHBOUND, THE I-91 EXIT 12 NORTHBOUND OFF-RAMP, AND BUGBEE STREET. IT IS BETWEEN NORTHBOUND MILE MARKERS 71.75 AND 71.80. THE MARK IS SET IN THE TOP OF THE EAST SIDE OF A 70 CM (28 INCHES) DIAMETER CONCRETE ANCHOR BASE FOR THE SECOND METAL GUARD RAIL POST NORTH OF THE SOUTH END OF A GUARD RAIL. IT IS 1.0 M (3.3 FT) SOUTHEAST OF AND ABOUT 0.1 M (0.3 FT) LOWER THAN THE SOUTHEAST EDGE OF PAVEMENT OF THE NORTHBOUND LANE, 27.4 M (89.9 FT) WEST NORTHWEST OF THE CENTERLINE OF THE NORTHBOUND OFF-RAMP, 2.0 M (6.6 FT) NORTH NORTHEAST OF THE MOST SOUTHERLY METAL GUARD RAIL POST, 0.1 M (0.3 FT) WEST OF THE EAST EDGE OF THE CONCRETE BASE, AND 1.8 M (5.9 FT) SOUTH SOUTHWEST OF THE THIRD METAL GUARD RAIL POST AND A FIBERGLASS WITNESS POST.

HVCTRL #11

I 91 EXIT 12 AZ MK
 NORTH = 426797.45
 EAST = 1688530.98
 ELEV. = 503.89

JUST NORTH OF U-TURN AT NB MILE MARKER 72.20, 3.8 M (12.5 FT) EAST OF AND ABOUT 0.4 M (1.3 FT) LOWER THAN THE EDGE OF PAVEMENT OF THE SOUTHBOUND LANE, 8.4 M (27.6 FT) WEST OF AND ABOUT 0.3 M (1.0 FT) LOWER THAN THE EDGE OF PAVEMENT OF THE NORTHBOUND LANE, 3.1 M (10.2 FT) NORTH OF THE EDGE OF PAVEMENT OF THE U-TURN, 3.4 M (11.2 FT) SOUTHWEST OF THE CENTER OF A 45 CM (18 INCHES) SQUARE DRAIN, AND 2.9 M (9.5 FT) SOUTH SOUTHEAST OF A POST FOR A NO U-TURN SIGN AND A FIBERGLASS WITNESS POST.

TRAVERSE TIES



* Main Traverse Completed 6/12/08 by R.Gilman P.C. & P.Winters & T.Parker
 * Secondary Traverse Completed 12/08/09 by R.Gilman P.C. & P.Winters

I-91 TIE SHEET 1

PROJECT NAME:	HARTLAND-NORWICH	FILE NAME:	/pave/06a202/p06a202.dgn	PLOT DATE:	21-NOV-2012 11:44
PROJECT NUMBER:	IM 091-I(59)	PROJECT LEADER:	PTS	DRAWN BY:	R. Bullock
		DESIGNED BY:	VTRANS	CHECKED BY:	VTRANS
		IPARM FILE NAME:	06A202_03	SHEET	3 OF 60

NOT TO SCALE