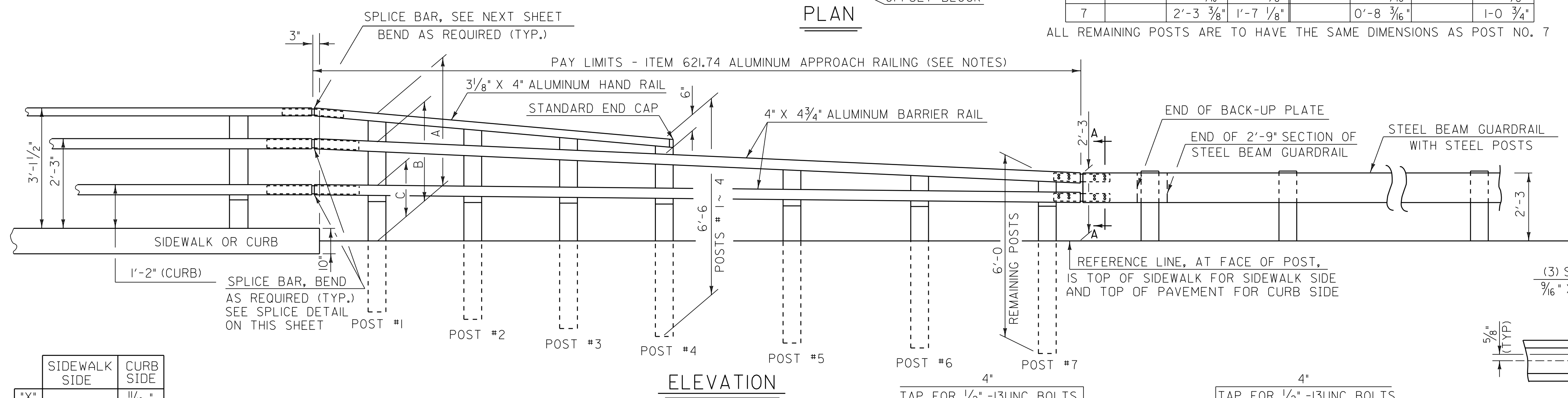
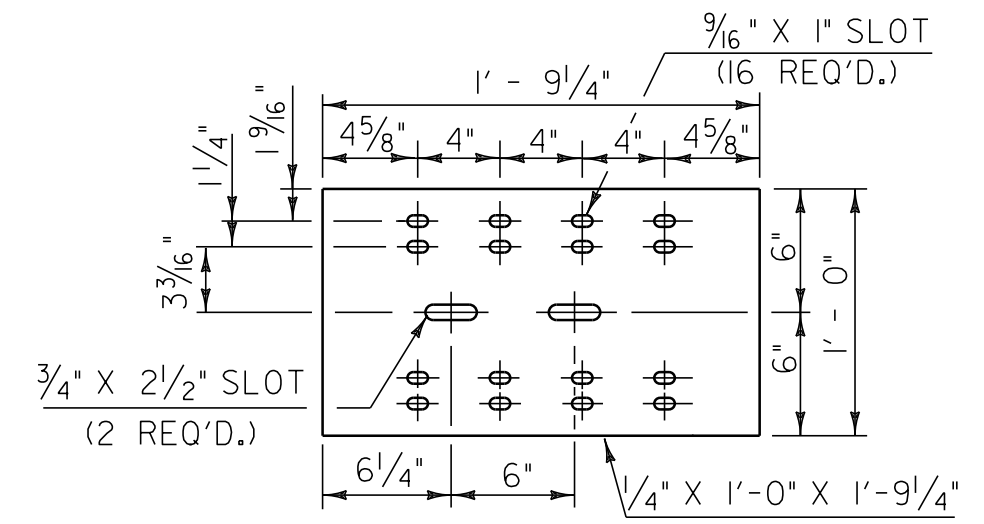


**ALUMINUM APPROACH RAIL
RAIL DIMENSIONS FOR A CURB CONDITION**

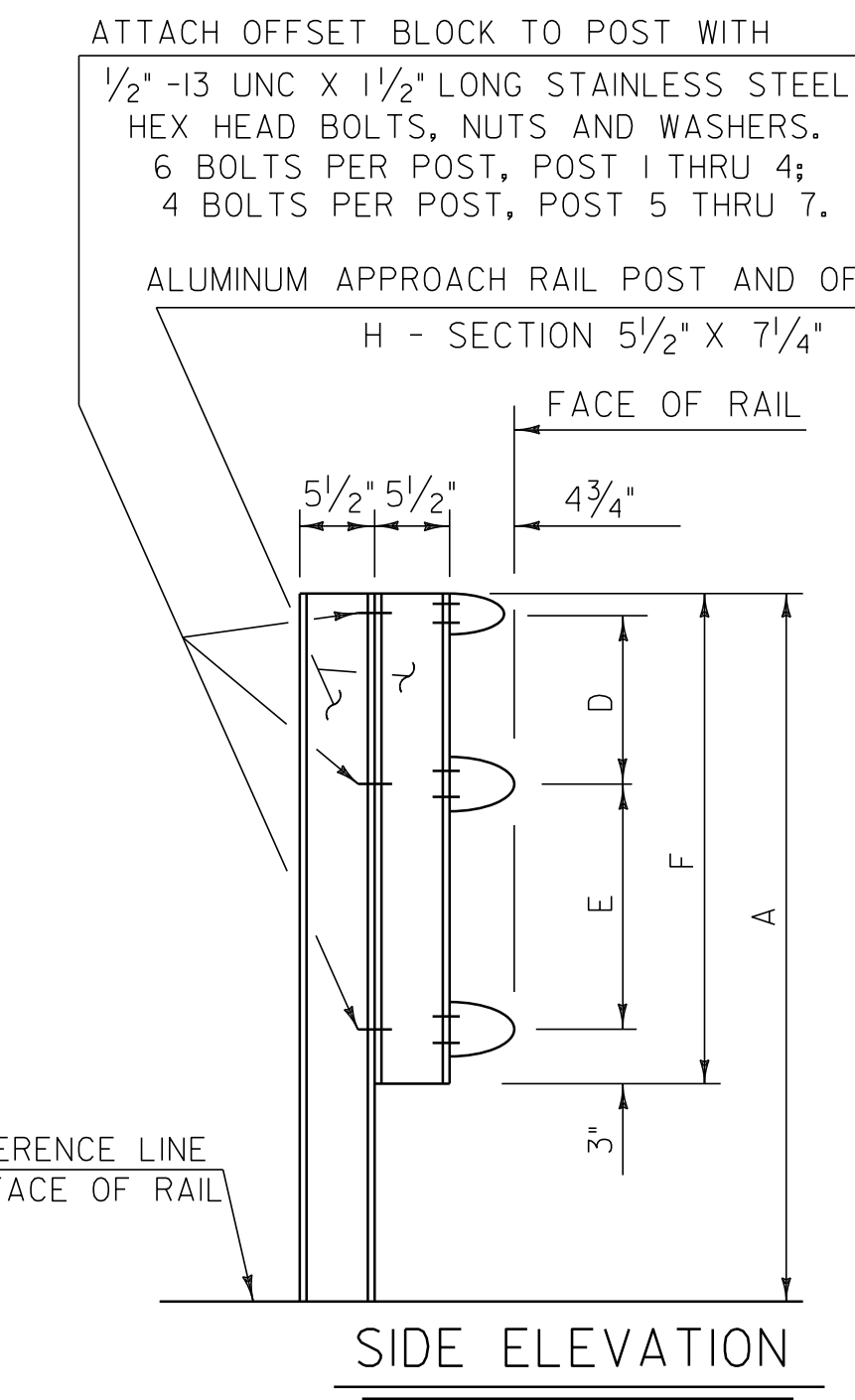
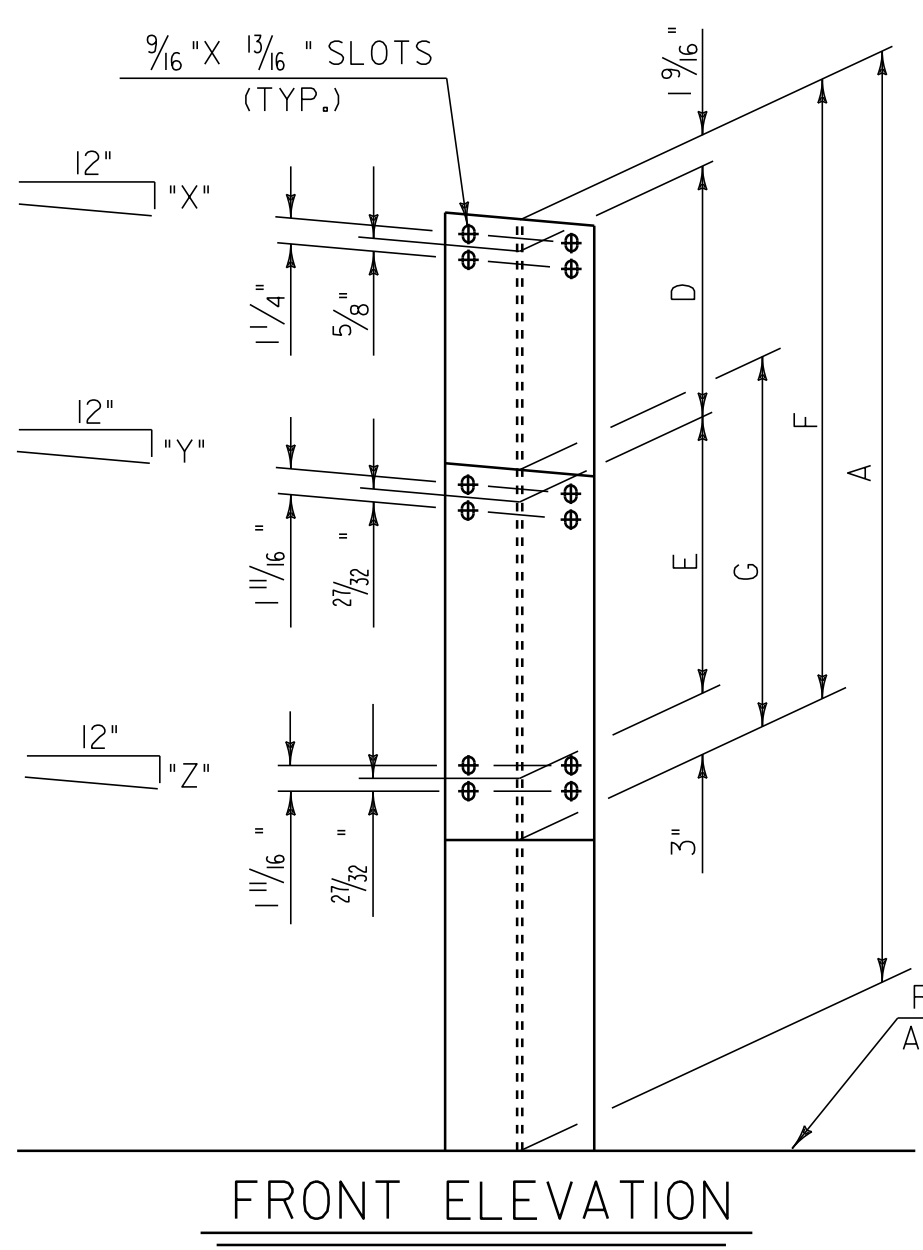
POST NO.	RAIL HEIGHT DIMENSIONS			OFFSET BLOCK DIMENSIONS			
	A	B	C	D	E	F	G
1	3'-8 1/16"	2'-10 3/8"	1'-9 3/4"	0'-9 1/16"	1'-0 9/16"	2'-2 7/8"	
2	3'-5 13/16"	2'-9 3/8"	1'-9 3/8"	0'-8 7/16"	0'-11 5/16"	2'-1"	
3	3'-3 3/16"	2'-8 3/8"	1'-9"	0'-7 1/4"	0'-11 3/16"	1'-11 1/8"	
4	3'-1 3/8"	2'-7 3/8"	1'-8 5/8"	0'-6"	0'-10 1/16"	1'-9 1/4"	
5		2'-6"	1'-8 1/8"		0'-9 7/8"		1'-2 7/16"
6		2'-4 11/16"	1'-7 5/8"		0'-9 1/16"		1'-1 5/8"
7		2'-3 3/8"	1'-7 1/8"		0'-8 3/16"		1-0 3/4"

ALL REMAINING POSTS ARE TO HAVE THE SAME DIMENSIONS AS POST NO. 7

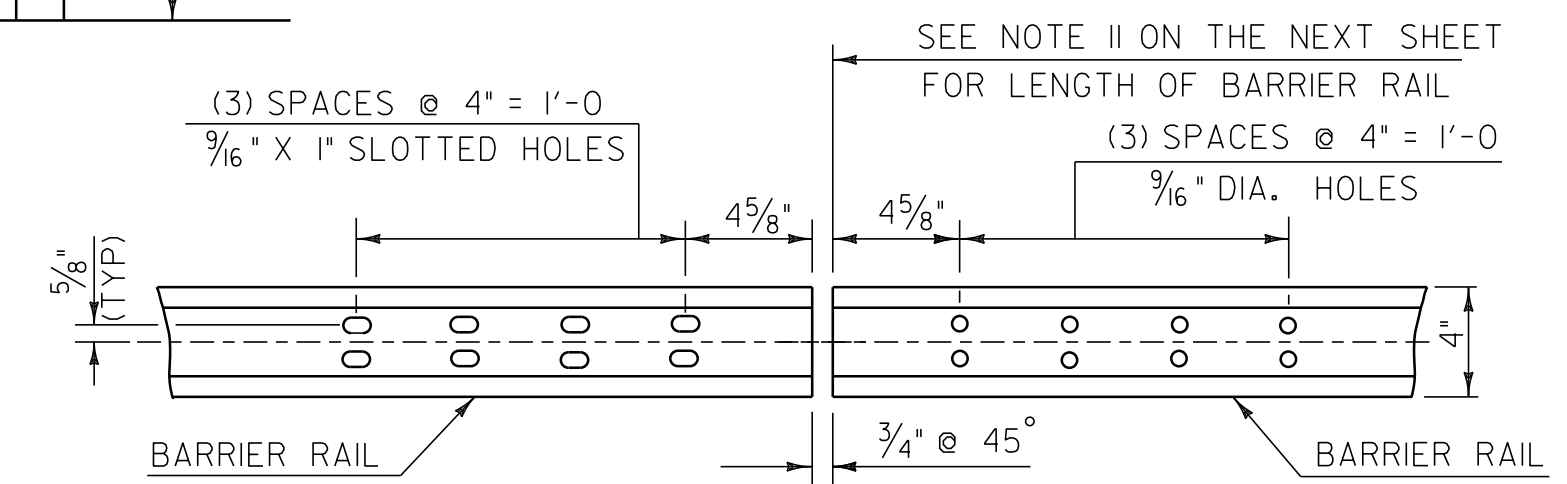
- NOTES**
- POST 1 THROUGH 7 SHALL BE EXTRUDED ALUMINUM.
 - ALL STRUCTURAL STEEL SHALL BE AASHTO M270M/M270 GRADE 36 GALVANIZED AFTER FABRICATION.
 - ALL ITEMS NOT OTHERWISE INDICATED SHALL MEET THE SPECIFICATION REQUIREMENTS OF THE STANDARD SHEETS ON WHICH THEY ARE DETAILED.
 - SEE STANDARD G-1 FOR STEEL BEAM GUARDRAIL DETAILS. SEE THIS SHEET AND THE NEXT SHEET FOR ALUMINUM BRIDGE RAILING DETAILS.
 - THE COST OF ALL MATERIALS AND LABOR FOR THE SPLICE BETWEEN THE ALUMINUM APPROACH RAILING AND THE STEEL BEAM GUARDRAIL SHALL BE INCLUDED IN THE UNIT PRICE BID FOR ITEM 621.74, ALUMINUM APPROACH RAILING.
 - DETAILS ARE SHOWN FOR TRANSITION TO A 3 RAIL ALUMINUM BRIDGE RAILING.
 - DIMENSIONS SHOWN ARE FROM A REFERENCE LINE AT THE FACE OF POST FOR A NORMAL CROWNED SECTION. APPROPRIATE CORRECTIONS SHALL BE MADE FOR CROSS SLOPES OTHER THAN A NORMAL SECTION.



SIDEWALK SIDE	CURB SIDE
"X"	11/16"
"Y"	5/16"
"Z"	1/8"

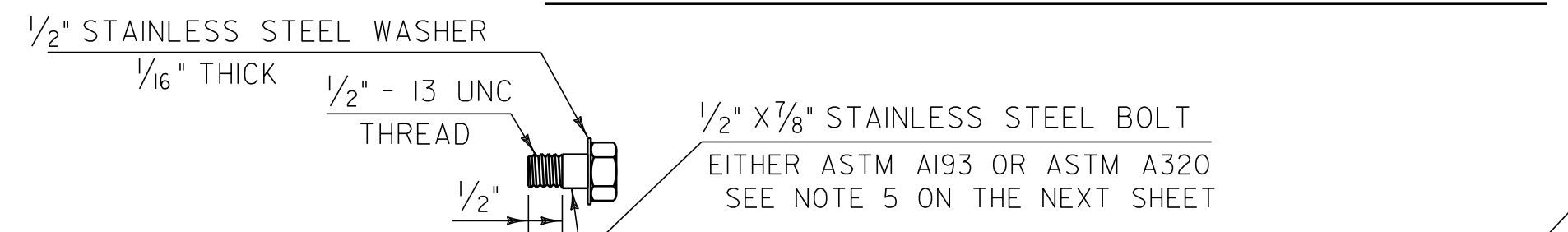


APPROACH RAIL DETAILS

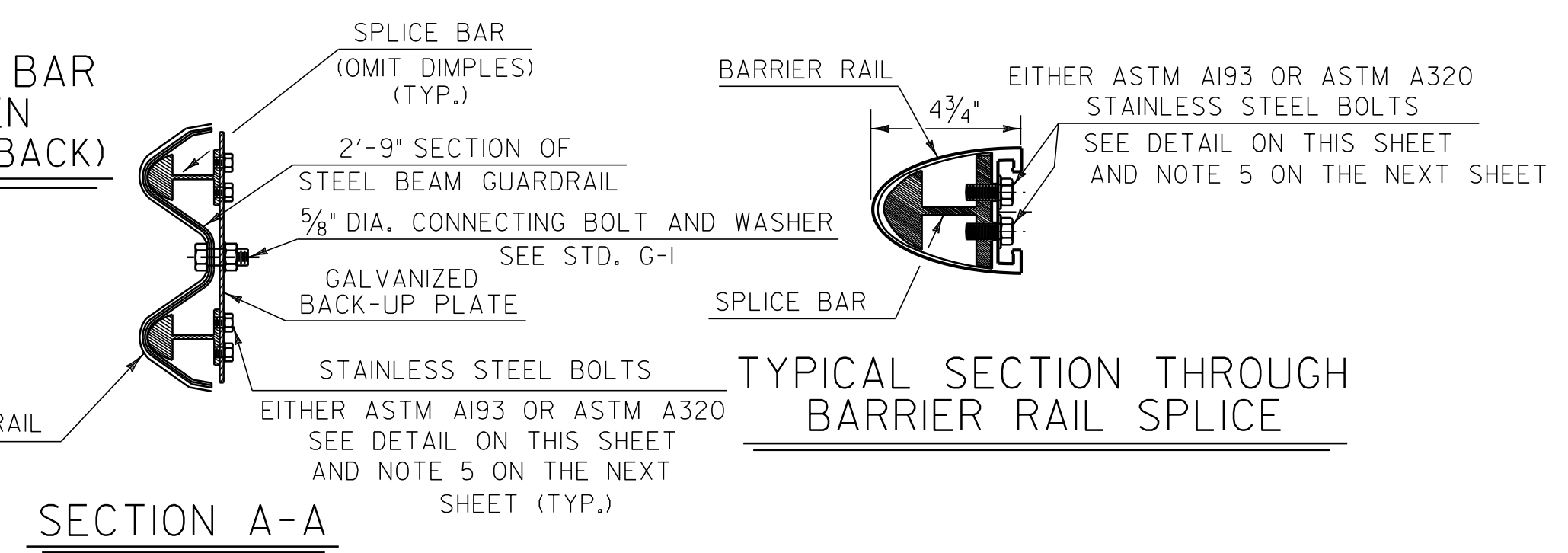


ELEVATION OF BARRIER RAIL (FROM BACK)
AT ALL INTERMEDIATE RAIL SPLICES

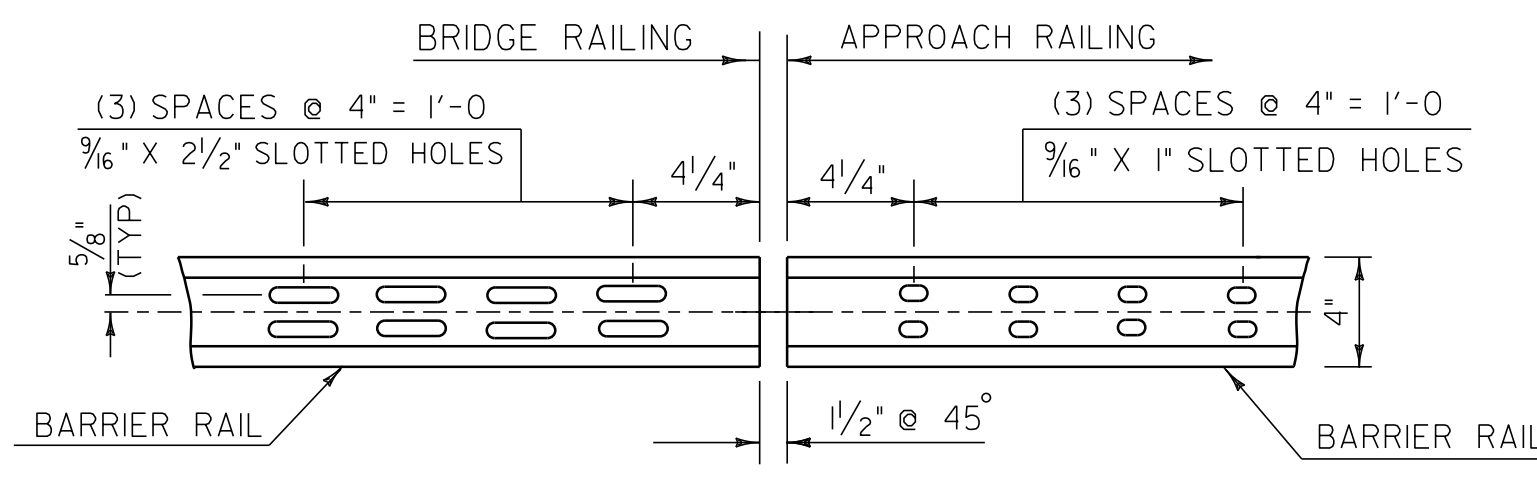
ELEVATION OF BARRIER RAIL SPLICE BAR
TO BE USED AT TRANSITION BETWEEN
APPROACH RAIL & GUARDRAIL (FROM BACK)



STAINLESS STEEL BOLT DETAILS



TYPICAL SECTION THROUGH
BARRIER RAIL SPLICE



ELEVATION OF BARRIER RAIL (FROM BACK)

BRIDGE 100N, 113N, 110S AND 113S

**ALUMINUM
APPROACH
RAILING DETAIL
SHEET 1**

PROJECT NAME: DERBY	PLOT DATE: 07-SEP-2010 10:28
PROJECT NUMBER: IM 091-3(46)	DRAWN BY: STANTEC
FILE NAME: p06a200.dgn	CHECKED BY: JLL
PROJECT LEADER: JLL	SHEET 56 OF 63
DESIGNED BY: STANTEC	
IPARM FILE: p06a200aard1.i	