

EXIT 3 - RAMP C SOUTHBOUND ON RAMP

SEE STANDARDS E-191, E-192 AND E-193
FOR PAVEMENT MARKING GUIDELINES

TEMPORARY 6" WHITE LINE, PAINT
DURABLE 6" WHITE LINE, RECESSED

410+00 TO 412+73 SOLID RT
1170+53 TO 1172+53 DASHED LT

TEMPORARY 6" YELLOW LINE, PAINT
DURABLE 6" YELLOW LINE, RECESSED

410+00 TO 411+48 SOLID LT

TEMPORARY 12" WHITE LINE, PAINT
DURABLE 12" WHITE LINE, RECESSED

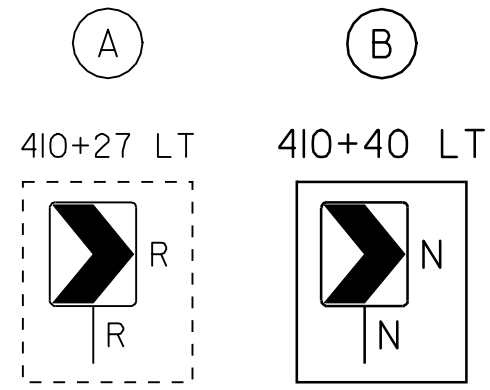
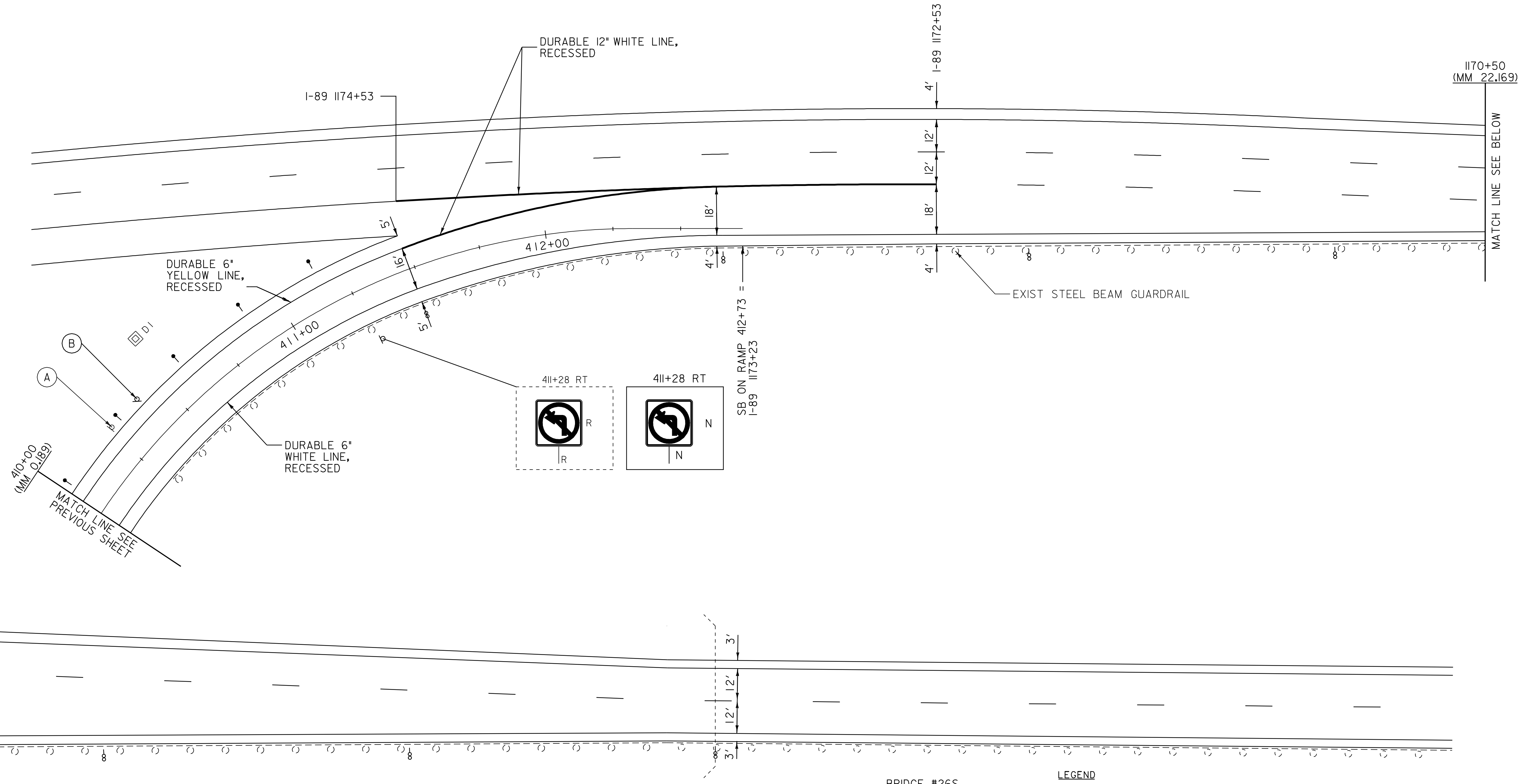
411+48 TO 412+63 SOLID LT
1172+53 TO 1174+53 SOLID LT

DELINEATORS

REFER TO STANDARDS E-197 AND
E-198 FOR PLACEMENT GUIDELINES

REMOVING SIGNS

AS SHOWN - 2



410+00
(MM 0.189)
MATCH LINE SEE
PREVIOUS SHEET

1170+50
(MM 22.169)
MATCH LINE SEE ABOVE

BRIDGE #26S
1157+29
(MM 21.918)

LEGEND	
R	= REMOVE EXISTING
S	= SALVAGE
R&S	= REMOVE AND SALVAGE
N	= NEW
RET	= RETAIN
B-B	= BACK TO BACK
---	= EXISTING GUARDRAIL
o	= PROPOSED GUARDRAIL
o	= TYPE I DELINEATOR, WHITE
o	= TYPE II DELINEATOR, AMBER
o	= TYPE III DELINEATOR, WHITE
o	= TYPE III DELINEATOR, RIGHT
o	= TYPE III DELINEATOR, LEFT

RAMP DETAIL #7

PROJECT NAME: ROYALTON-BETHEL	PLOT DATE: 28-JUN-2010 15:12
PROJECT NUMBER: IM 089-1(54)	DRAWN BY: MRS
FILE NAME: p06a198.dgn	CHECKED BY: PTS
PROJECT LEADER: PTS	SHEET 20 OF 37
DESIGNED BY: NLL	
IPARM FILE NAME: p06a198r.d7.1	

NOT TO SCALE