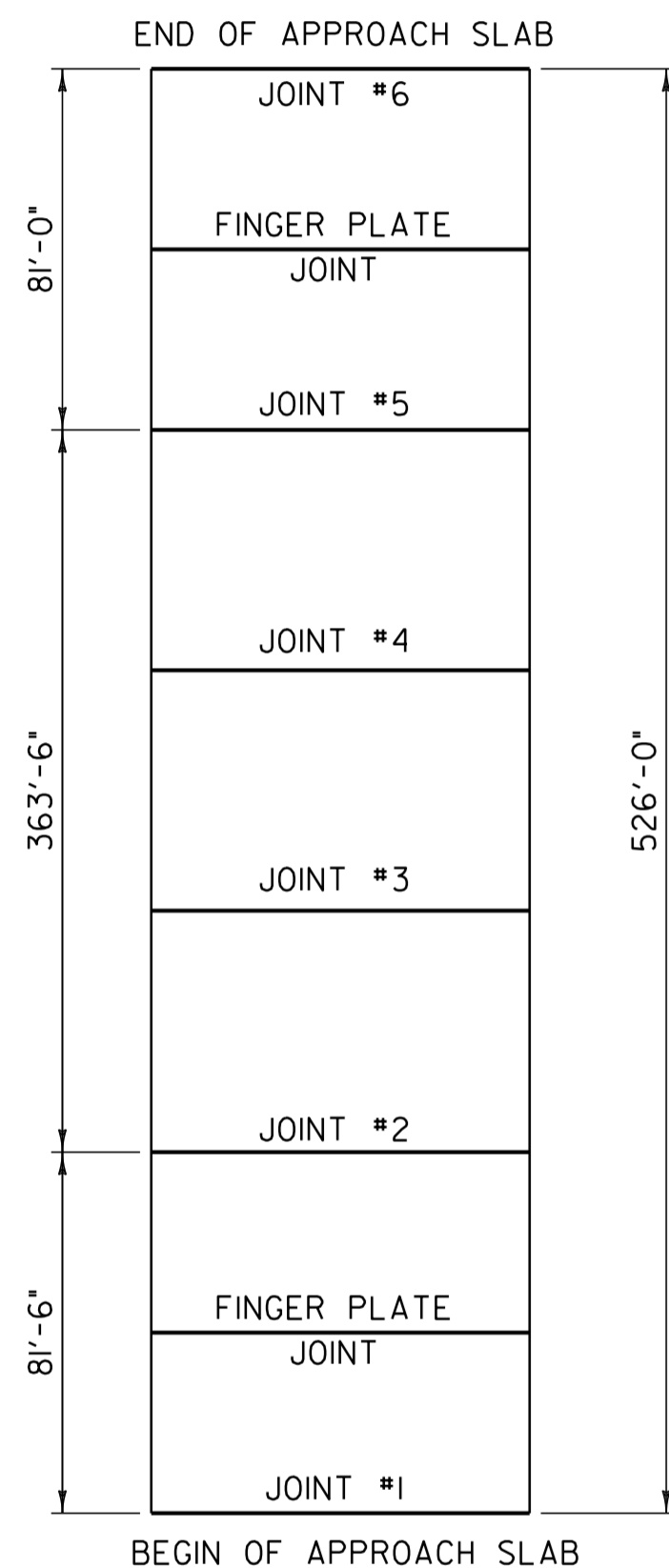


JOINT	STATION	LENGTH
1	5578+06	39' - 0"
2	5578+43	40' - 0"
3	5579+37	40' - 0"
4	5579+72	36' - 0"
BRIDGE #84N		155' - 0"
TOTAL LENGTH OF JOINT		

TYPICAL APPROACH AREA DETAIL

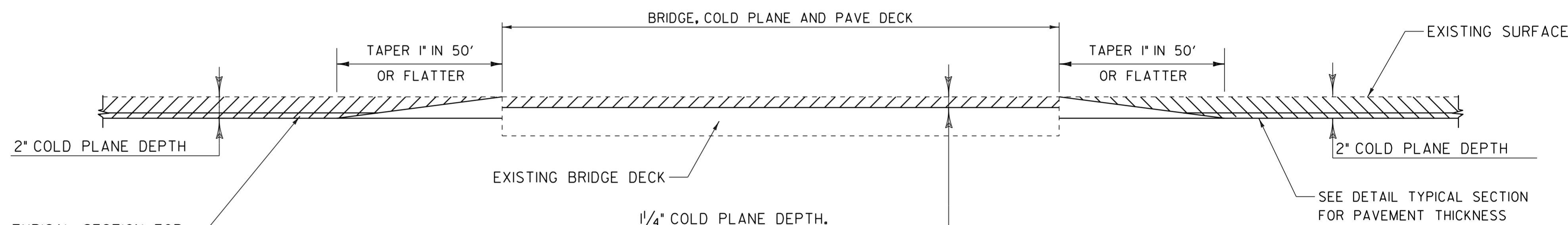
LOCATION
 STA. 5174+40.00 - BEGINNING OF PROJECT
 STA. 5646+10.00 - END OF PROJECT
 STA. 1+17.00 - EXIT 17 RAMP C
 STA. 10+15.00 - EXIT 18 RAMP A
 STA. 0+15.00 - EXIT 18 RAMP B

**BRIDGE #84N
 STA. 5578 + 88.50 (MM 105.660)
 COLD PLANE AND PAVE**



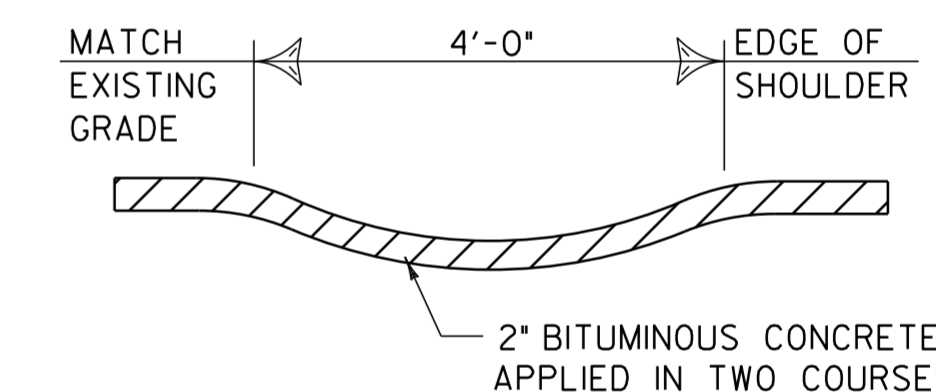
JOINT	STATION	LENGTH
1	5363+03.21	30' - 0"
2	5363+84.71	
3	5364+83.54	
4	5366+43.62	
5	5367+48.21	
6	5368+29.21	30' - 0"
BRIDGE #81N		60' - 0"
TOTAL LENGTH OF JOINT		

JOINTS 2, 3, 4, AND 5 ARE VERTICAL PLATE JOINTS AND, THEREFORE, DO NOT REQUIRE ASPHALTIC PLUG JOINTS.



BRIDGE COLD PLANE DETAIL

BRIDGE # 81N LOCATION
 STA. 5365+66.46 (MM 101.622)
 BRIDGE #84N LOCATION
 STA. 5578+88.50 (MM 105.660)

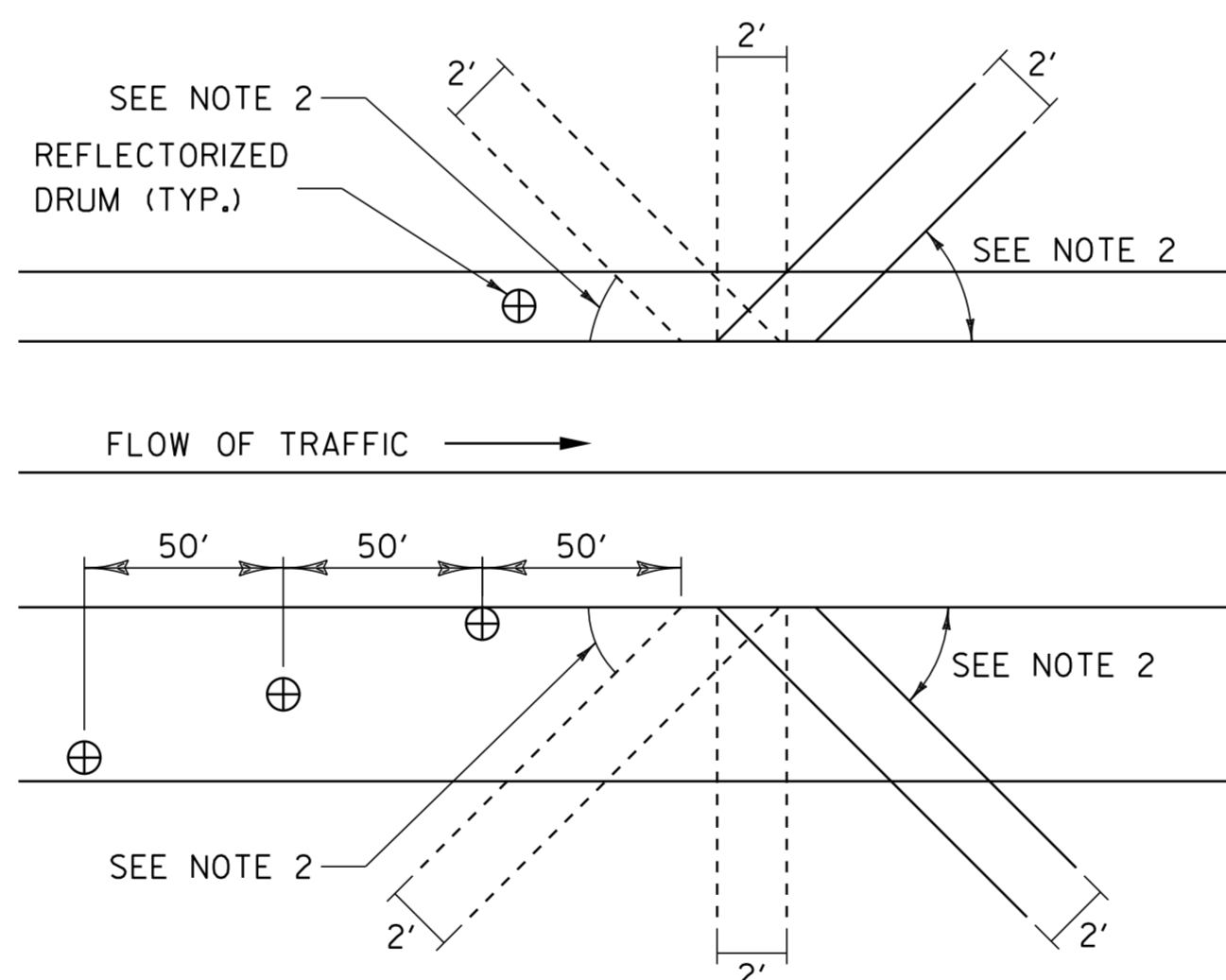


BITUMINOUS CONCRETE GUTTER DETAIL

EXIT 17 STA. 5+16 LT, RAMP C
 EXIT 18 STA. 12+83 RT, RAMP A
 EXIT 18 STA. 15+67 RT, RAMP A

SEE DETAIL TYPICAL SECTION FOR PAVEMENT THICKNESSES.

1/4" COLD PLANE DEPTH.
 PAVE WITH 1/4" SUPERPAVE BITUMINOUS CONCRETE PAVEMENT, TYPE IVS



BLEEDER DETAIL

BLEEDER DETAIL NOTES:

- BLEEDERS ARE TO BE CUT WHILE COLD PLANING, AT LOCATIONS SPECIFIED BY THE RESIDENT ENGINEER.
- ANGLE BLEEDERS TO BEST ACCEPT WATER FLOW.
- CUT ALL BLEEDERS TO THE DEPTH OF COLD PLANING AND GRADE TO DRAIN. PAYMENT INCIDENTAL TO ITEM 210.10.
- BLEEDERS ARE TO BE FILLED DURING PAVING WITH ITEM 490.30, (PG 64-28) OR AS DESIGNATED BY THE RESIDENT ENGINEER.
- REFLECTORIZED DRUMS MUST BE PLACED AS SHOWN TO WARN MOTORISTS OF THE GAP IN THE SHOULDER.
- BLEEDERS ARE NOT REQUIRED IF THE COLD PLANED AREAS ARE PAVED BACK THE SAME DAY.

**BRIDGE #81N
 STA. 5365 + 66.46 (MM 101.622)
 COLD PLANE AND PAVE**

NOTES:

- REFER TO SHEET 5 FOR ASPHALTIC PLUG JOINT AND DETAILS. ALL NEW JOINTS TO BE PAID FOR UNDER ITEM 516.10, "BRIDGE EXPANSION JOINT, ASPHALTIC PLUG".
- BRIDGE #81N HAS DROP INLET AND/OR DOWNSPOUT OPENINGS LOCATED AT THE CURB LINE. THESE DRAINAGE OPENINGS WILL NOT REQUIRE REHABILITATION OR HEIGHT ADJUSTMENT.
- THE CONTRACTOR SHALL TAKE PRECAUTIONS TO AVOID THE ACCUMULATION OF DEBRIS IN THE DRAINAGE STRUCTURES LOCATED AT CURB LINE AND IN THE EXPANSION JOINTS. THE CONTRACTOR SHALL EXAMINE THESE BRIDGE FEATURES ON A REGULAR BASIS TO ENSURE THAT DEBRIS HAS NOT ACCUMULATED. ANY DEBRIS WHICH IS PRESENT SHALL BE REMOVED BY THE CONTRACTOR AT NO COST TO THE STATE.
- THE CONTRACTOR SHALL PERFORM COLD PLANING WITH CAUTION AT THESE LOCATIONS. ANY DAMAGE WHICH OCCURS TO BRIDGE DECK MEMBRANES AS A RESULT OF COLD PLANE OPERATIONS SHALL BE THE RESPONSIBILITY OF THE CONTRACTOR AND THE MEMBRANE WILL BE REPAIRED OR REPLACED AT NO COST TO THE STATE.

NOTES:

- EXISTING BITUMINOUS CONCRETE GUTTERS SHALL BE REMOVED WHERE INDICATED ON THE DETAIL. ANY EXCAVATION ASSOCIATED WITH THIS REMOVAL IS TO BE PAID AS ITEM 203.15 "COMMON EXCAVATION".
- THE BED UPON WHICH THE BITUMINOUS CONCRETE GUTTER WILL BE PLACED SHALL BE COMPACTED TO THE LINE, GRADE AND SLOPE AS DIRECTED BY THE RESIDENT ENGINEER.
- THE BITUMINOUS CONCRETE PAVEMENT SHALL BE LAID IN TWO COURSES, EACH ROLLED WITH A 150 POUND ROLLER.
- THIS WORK IS TO BE PAID FOR UNDER ITEM 616.47, "BITUMINOUS CONCRETE GUTTERS AND TRAFFIC ISLANDS". NOT INCLUDED IN THIS WORK IS ANY ADDITIONAL SUBBASE MATERIAL.

DETAILS ARE NOT TO SCALE

BRIDGE LOCATION AND DETAIL SHEET	PROJECT NAME: COLCHESTER - GEORGIA	
	PROJECT NUMBER: IM 089-3(64)	
	FILE NAME: p06a196.dgn	PLOT DATE: 04-OCT-2011 16:52
	PROJECT LEADER: CDL	DRAWN BY: SJL
DESIGNED BY: SJL	CHECKED BY: EPD	
PLOT FILE: p06a196bldsl.r	SHEET 4 OF 23	