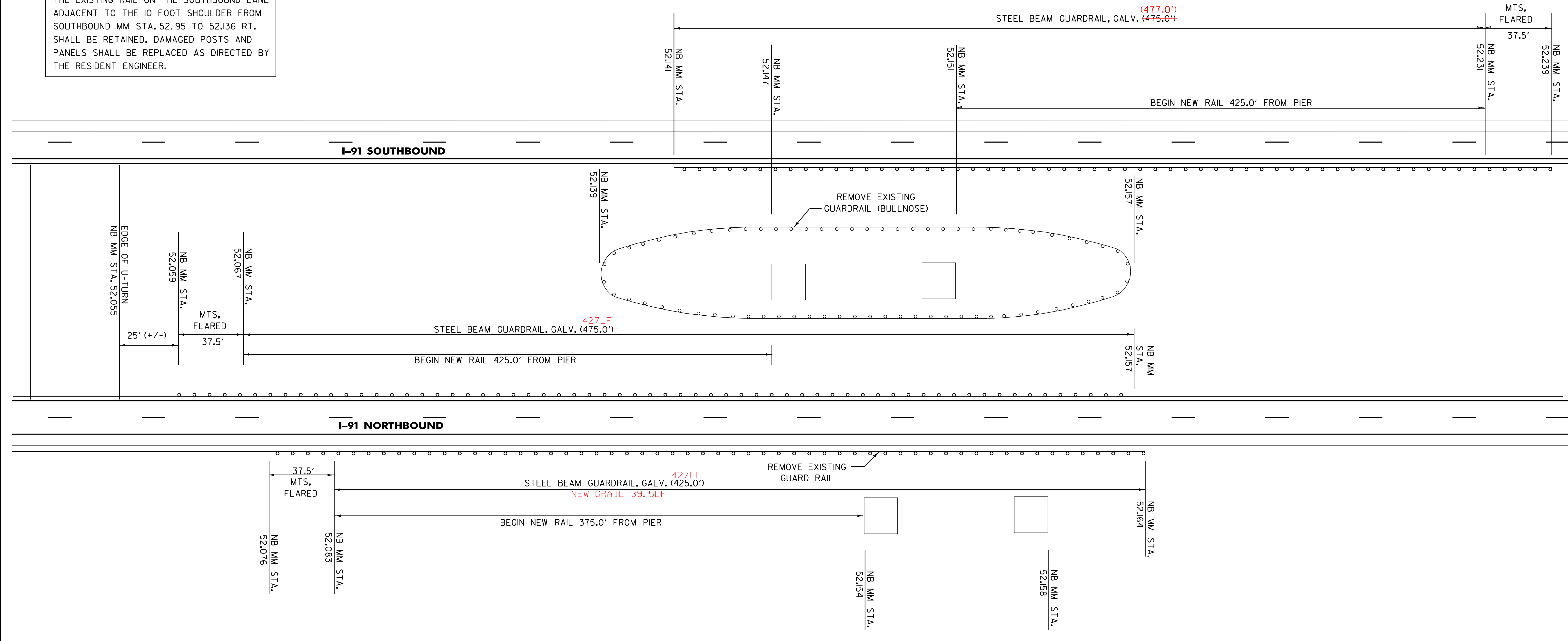


THE EXISTING RAIL ON THE SOUTHBOUND LANE ADJACENT TO THE 10 FOOT SHOULDER FROM SOUTHBOUND MM STA. 52.195 TO 52.136 RT. SHALL BE RETAINED. DAMAGED POSTS AND PANELS SHALL BE REPLACED AS DIRECTED BY THE RESIDENT ENGINEER.



- 621.20 STEEL BEAM GUARDRAIL, GALVANIZED
 NB MM STA. 52.067 TO 52.157 LT (475')
 NB MM STA. 52.083 TO 52.164 RT (425')
 NB MM STA. 52.141 TO 52.231 LT (ON SB LANE) (475')
- 621.50 MANUFACTURED TERMINAL SECTION, FLARED
 NB MM STA. 52.059 TO 52.067 LT
 NB MM STA. 52.076 TO 52.083 RT
 NB MM STA. 52.231 TO 52.239 LT (ON SB LANE)
- 621.60 ANCHOR FOR STEEL BEAM RAIL
 NB MM STA. 52.141 LT (ON SB LANE)
 NB MM STA. 52.157 LT
 NB MM STA. 52.164 RT
- 621.80 REMOVAL & DISPOSAL OF GUARDRAIL
 NB MM STA. 52.137 TO 52.161 RT (125')
 NB MM STA. 52.139 TO 52.157 LT (BULLNOSE) (200')

BRIDGE #31 I-91 NB MM STA. 52.172

GUARDRAIL AT BRIDGE DETAIL SHEET #4	PROJECT: SPRINGFIELD - WINDSOR	PROJECT NO.: IM 091-(155)
	DESIGN FILE NAME: <u>06A194.dgn</u>	PLOT DATE: <u>28-OCT-2011 14:0</u>
	IPARM FILE NAME: <u>06A194br4.i</u>	SURVEY DATE: <u>N/A</u>
	SURVEYED BY: <u>N/A</u>	DRAWN BY: <u>LFW</u>
	SQUAD LEADER: <u>LFW</u>	SHEET: 30 OF 36

THE CONTRACTOR SHALL WIDEN WITH EARTH BORROW ADJACENT TO THE 4.0' SHOULDER TO PROVIDE BACKING FOR THE NEW GUARDRAIL AND TO CONSTRUCT A FLARE FOR THE END TERMINAL. CONSTRUCTION OF THE WIDENING AND TERMINAL FLARE SHALL BE COMPLETED IN ACCORDANCE WITH STANDARD G-19.

NOT TO SCALE