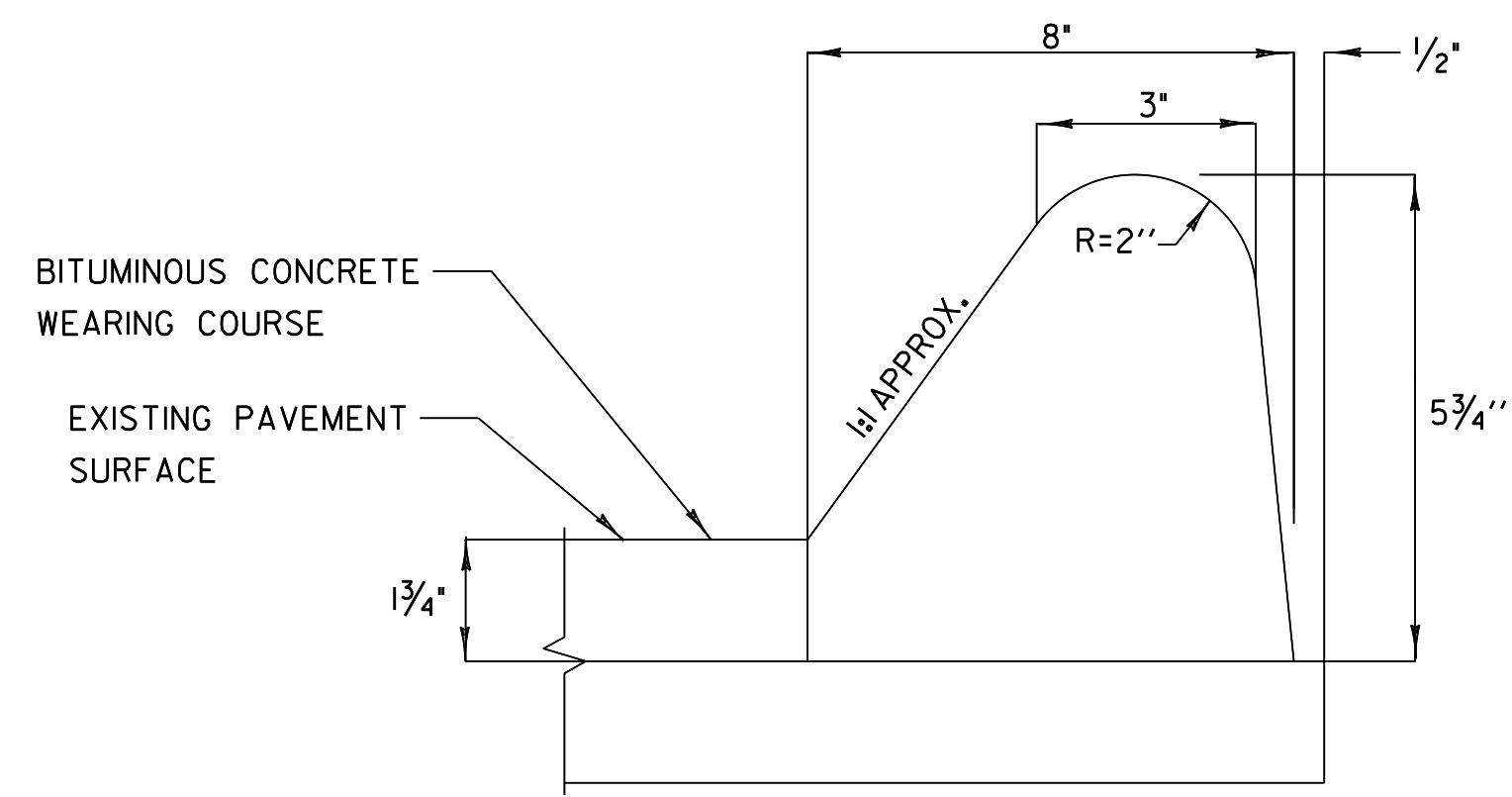


RAMP PAVEMENT TYPICAL

EXIT 8 OFF RAMP C - SEE SHEET # 14
 EXIT 8 ON RAMP D - SEE SHEET # 14



DETAIL FOR BITUMINOUS CONCRETE CURB, TYPE A

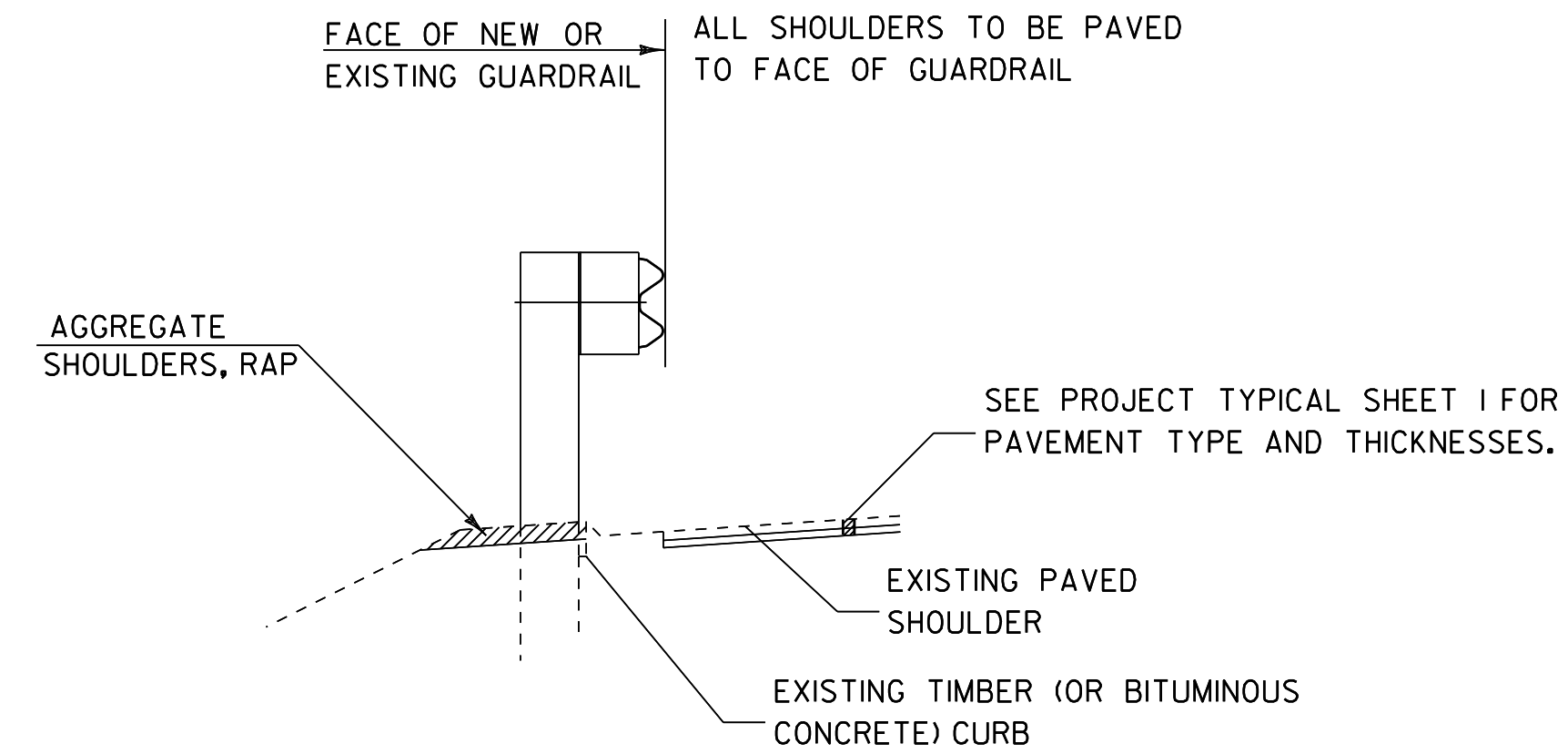
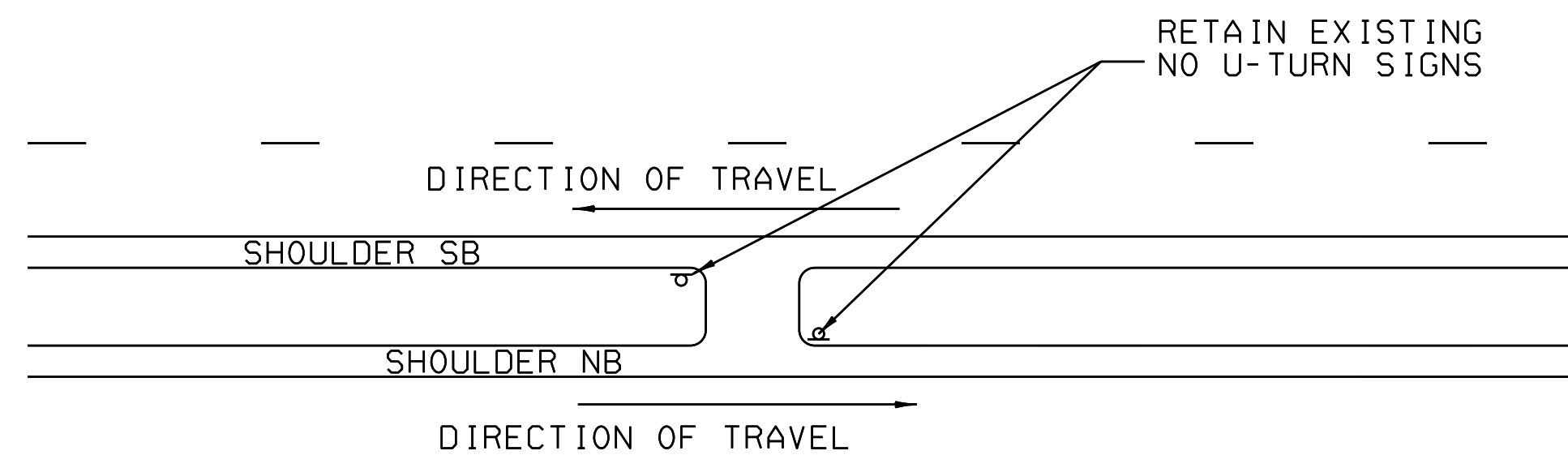
NOTE:

- 1. BITUMINOUS CONCRETE CURB, TYPE A, SHALL BE 1" BEHIND FACE OF GUARDRAIL. THE CONTRACTOR MAY SUBMIT ALERNATIVE CROSSECTIONS FOR CURB WORK.

U-TURN TYPICAL

NOTE: U-TURNS ARE NOT TO BE COLD PLANED OR PAVED. U-TURN LOCATIONS ARE PROVIDED FOR INFORMATION ONLY.

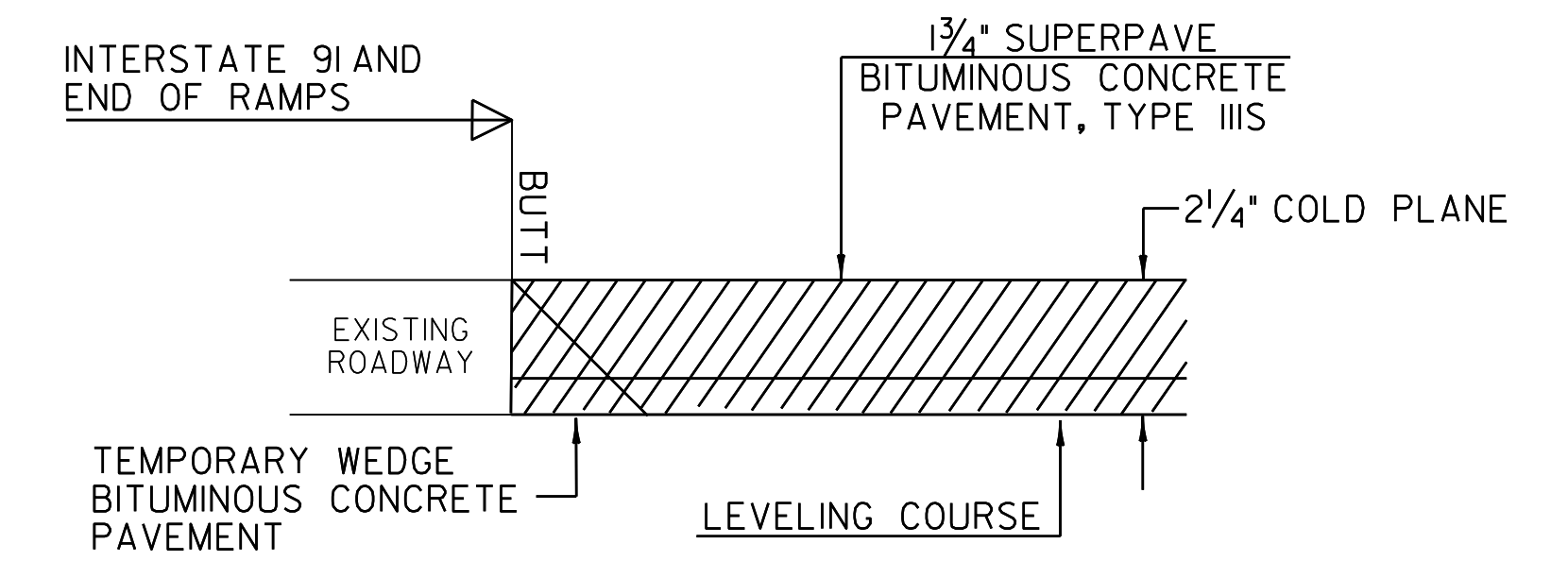
LOCATION
 SPRINGFIELD
 NB MM STA. 45.229
 WEATHERSFIELD
 NB MM STA. 48.200
 NB MM STA. 51.110
 NB MM STA. 52.051
 WINDSOR
 NB MM STA. 53.540
 NB MM STA. 53.645
 NB MM STA. 56.247



TYPICAL SECTION AT GUARDRAIL
 (EXISTING STEEL BEAM WITH CURBING)

NOTE:

- 1. ESTIMATED QUANTITIES OF BITUMINOUS CONCRETE CURB AND TREATED TIMBER CURB HAVE BEEN ADDED TO REPLACE DAMAGED OR MISSING CURB, AS DIRECTED BY THE RESIDENT ENGINEER. AN ESTIMATED QUANTITY OF EXISTING CURB REMOVAL HAS ALSO BEEN INCLUDED FOR THE PROVISION OF REMOVING DAMAGED TREATED TIMBER OR BITUMINOUS CURB, AS DIRECTED BY THE RESIDENT ENGINEER. SEE DETAIL FOR BITUMINOUS CURB ON THIS SHEET.
- 2. ALL GUARDRAIL SHALL BE STEEL BEAM GUARDRAIL WITH STEEL POSTS AND WOOD BLOCKOUTS (OR APPROVED ALTERNATIVE MATERIAL). NEW GUARDRAIL SHALL COMPLY WITH STANDARD G-1.

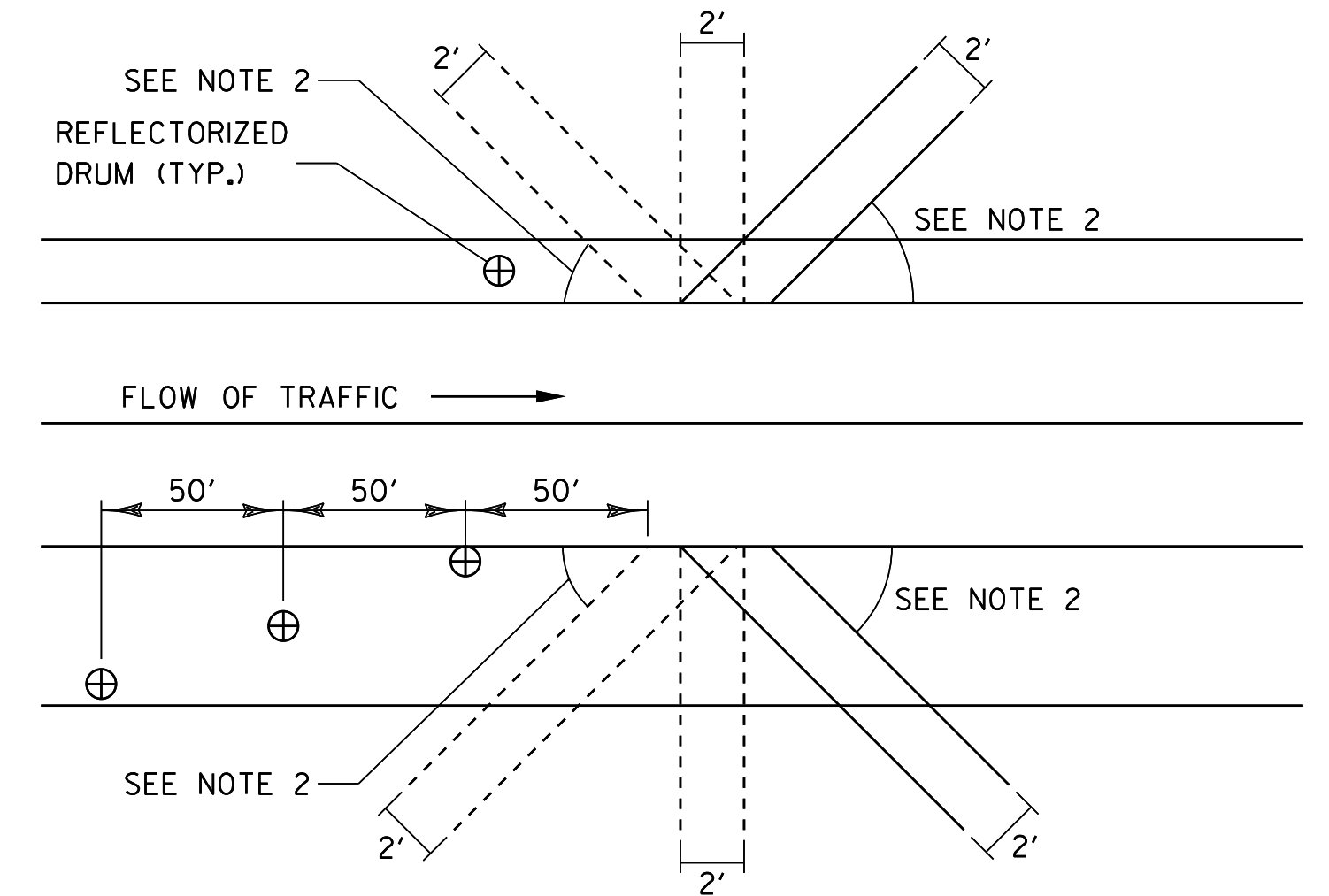


MAINLINER/RAMP BUTT JOINT DETAIL

LOCATION

NB MM STA. 44.900 - BEGIN COLD PLANING
 NB MM STA. 57.414 - END COLD PLANING

EXIT 8 NB OFF RAMP/VT. ROUTE 131 PAVEMENT MATCH
 EXIT 8 NB ON RAMP/VT. ROUTE 131 PAVEMENT MATCH



BLEEDER DETAIL

BLEEDER DETAIL NOTES:

- 1. BLEEDERS ARE TO BE CUT WHILE COLD PLANING, AT LOCATIONS SPECIFIED BY THE RESIDENT ENGINEER.
- 2. ANGLE BLEEDERS TO BEST ACCEPT WATER FLOW.
- 3. CUT ALL BLEEDERS TO THE DEPTH OF COLD PLANING AND GRADE TO DRAIN. PAYMENT INCIDENTAL TO ITEM 210.10.
- 4. BLEEDERS ARE TO BE FILLED DURING PAVING WITH ITEM 490.30 OR AS DESIGNATED BY THE RESIDENT ENGINEER.
- 5. REFLECTORIZED DRUMS MUST BE PLACED AS SHOWN TO WARN MOTORISTS OF THE GAP IN THE SHOULDER. PAYMENT INCIDENTAL TO ITEM 641.10.
- 6. BLEEDERS ARE NOT REQUIRED IF THE COLD PLANED AREAS ARE PAVED BACK THE SAME DAY.

PROJECT TYPICAL SHEET 2

PROJECT NAME: SPRINGFIELD - WINDSOR
 PROJECT NUMBER: IM 091-I(55)

FILE NAME: 06A194.dgn
 PROJECT LEADER: LFW
 DESIGNED BY: LFW
 PLOT FILE: 06A194+yp2.i

PLOT DATE: 28-OCT-2011 4:01
 DRAWN BY: LFW
 CHECKED BY: LFW
 SHEET 4 OF 36

NOT TO SCALE