

GPS CONTROL POINTS

HVCTRL #1

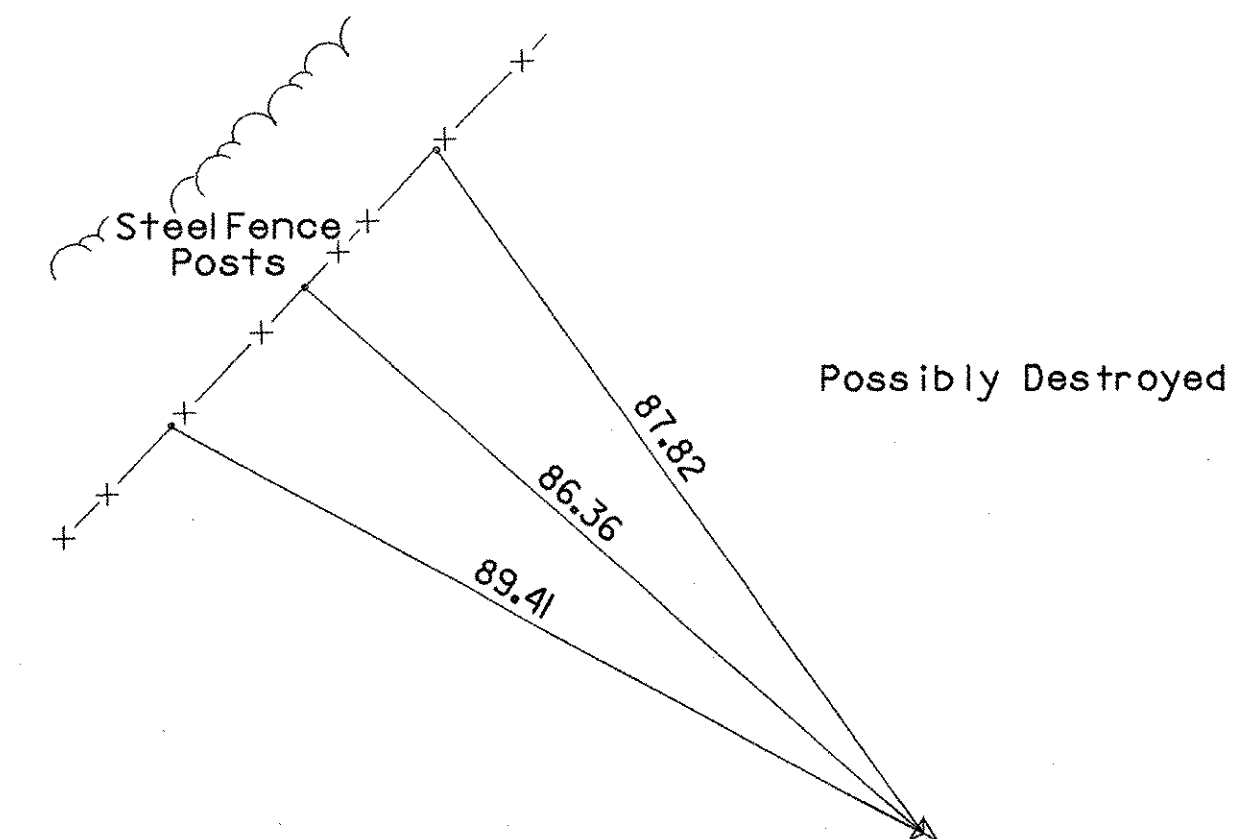
CW3 RESET 1991
 NORTH = 719709.85
 EAST = 1461835.18
 ELEV. = 312.40

GENERAL LOCATION, BURLINGTON, VT., ON THE BURLINGTON/SOUTH BURLINGTON CITY LINE. TO REACH FROM THE WEST END OF THE U.S.ROUTE 2 (WILLISTON ROAD) BRIDGE OVER I-89 AT EXIT 14 IN SOUTH BURLINGTON GO WEST ALONG U.S.ROUTE 2 FOR 0.2 MI(0.3 KM) TO THE INTERSECTION OF THE MAIN ENTRANCE DRIVE TO THE SHERITON INN RIGHT. TURN RIGHT AND GO NORTH ALONG ENTRANCE DRIVE FOR 0.1MI(0.2 KM) TO A FORK. BEAR LEFT AND GO NORTH ALONG PAVED ROAD FOR 0.05 MI(0.08 KM) TO THE T-INTERSECTION OF CATAMOUNT DRIVE, JUST PAST A GRAVEL DRIVE LEFT TO A 10 BAY WOODEN BARN/GARAGE. TURN LEFT AND GO WEST ALONG CATAMOUNT DRIVE FOR ABOUT 30 M (98.4 FT) TO A GATE. PARK VEHICLE AND WALK NORTH ALONG THE TOP OF A V-SHAPED WOODED PLATEAU FOR ABOUT 95 M (311.7 FT) TO THE SITE OF MARK. THE MARK IS SET 5 CM ABOVE GROUND SURFACE IN THE TOP OF A 20 CM SQUARE CONCRETE MONUMENT 1.4 M (4.6 FT) DEEP. IT IS 94.0 M (308.4 FT) NORTH OF AND ABOUT 3 M (9.8 FT) LOWER THAN THE CENTERLINE OF CATAMOUNT DRIVE, 88.8 M (291.3 FT) NORTH OF LIGHT POLE NO.GP2, 90.3 M (296.3 FT) NORTH-NORTHWEST OF THE MOST WESTERLY (OF 2) 1M (3.3 FT) SQUARE ELECTRICAL BOXES WHICH ARE FLUSH WITH GROUND SURFACE, AND 0.5 M (1.6 FT) NORTHWEST OF A STEEL WITNESS POST.

* Main Traverse Completed 06/16/06 by L.Orvis P.C. and R.Bullock

HVCTRL #2

TRAV PT#6 FILE 03A178 = REBAR
 NORTH = 719846.57
 EAST = 1462091.61
 ELEV. = 299.58



TRAVERSE TIES

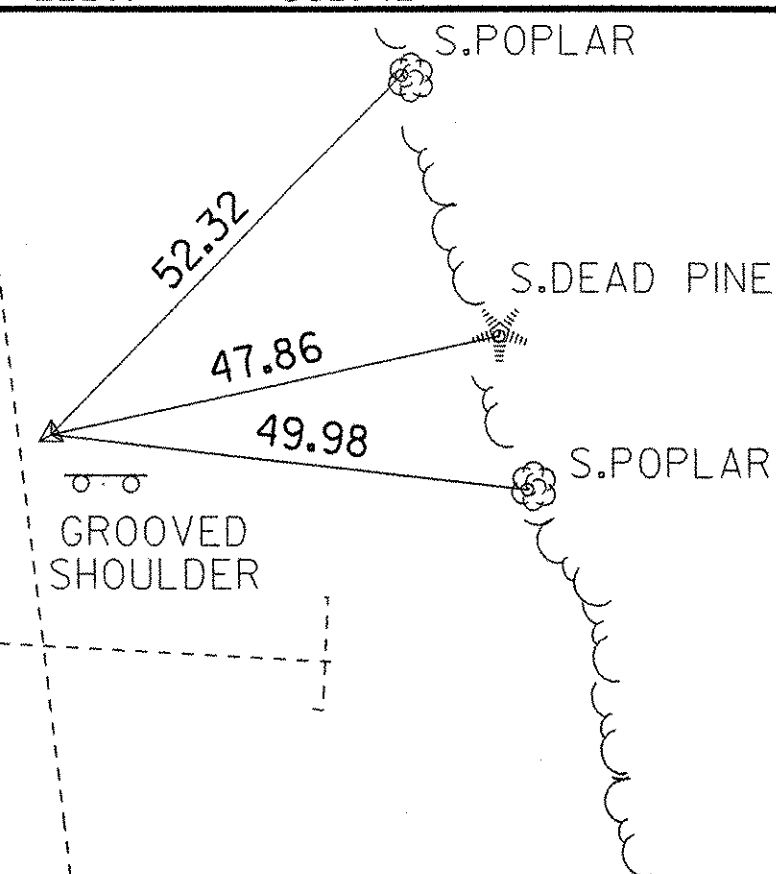
HVCTRL #3 - #10

NORTH =
 EAST =
 ELEV. =

NOT TIED

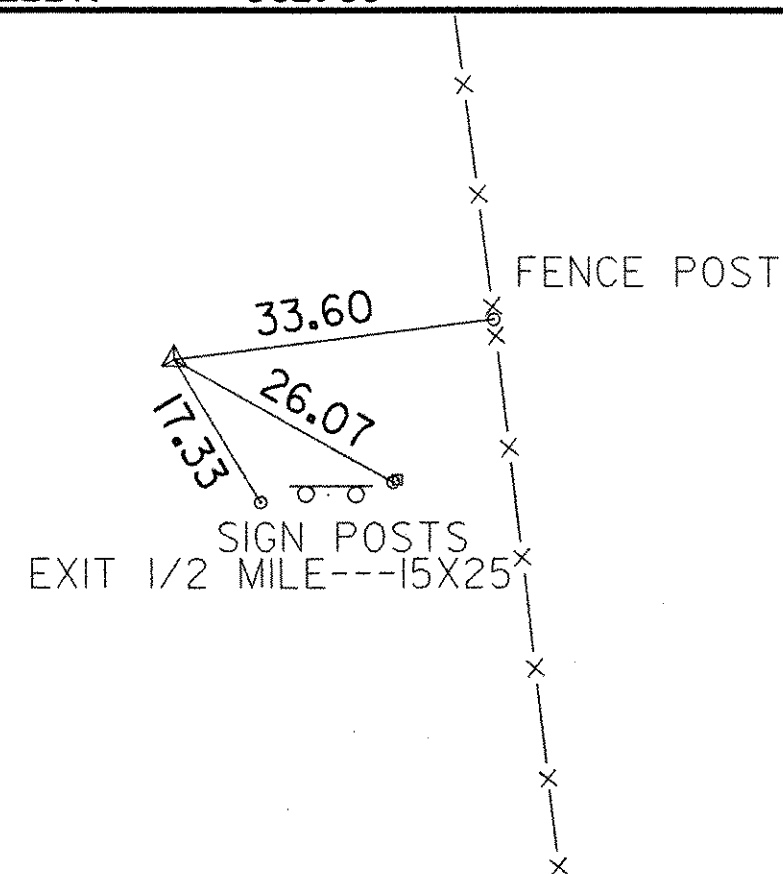
HVCTRL #11

NORTH = 714405.33
 EAST = 1461720.86
 ELEV. = 302.42



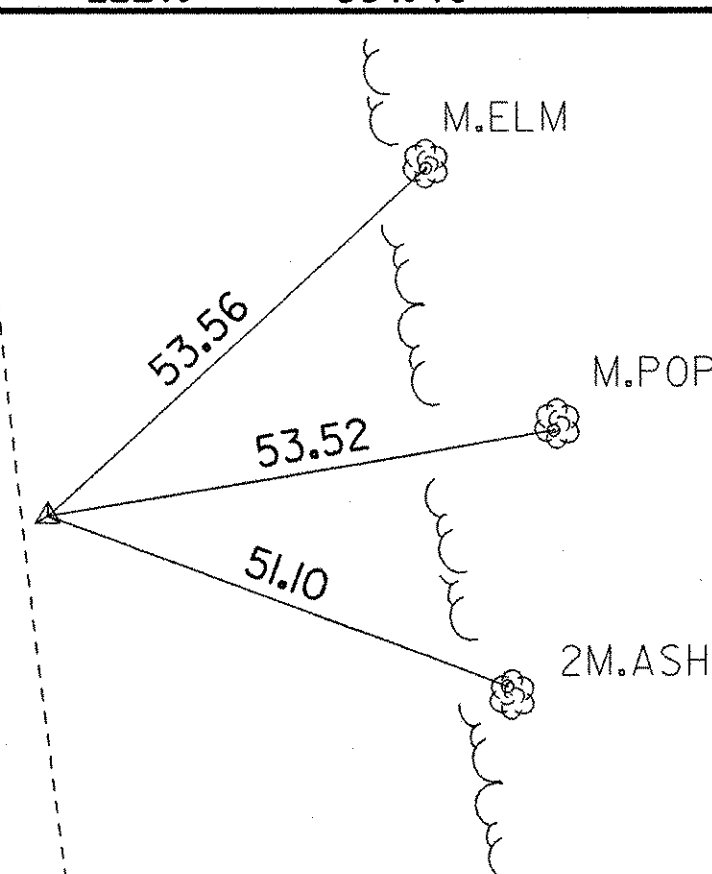
HVCTRL #12

NORTH = 715154.79
 EAST = 1461656.63
 ELEV. = 302.00



HVCTRL #13

NORTH = 716170.17
 EAST = 1461512.95
 ELEV. = 304.18



NORTH =
 EAST =
 ELEV. =

ALIGNMENT TIES

NORTH =
 EAST =

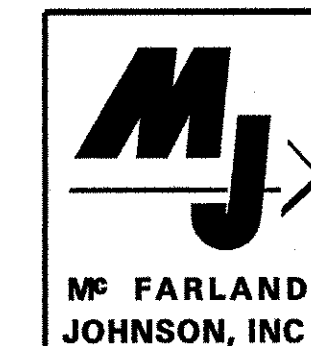
NORTH =
 EAST =

NORTH =
 EAST =

NORTH =
 EAST =

NORTH =
 EAST =

DATUM	
VERTICAL	NAVD 88
HORIZONTAL	NAD 83(96)
ADJUSTMENT	Compass



PROJECT NAME:	SOUTH BURLINGTON	PLOT DATE:	21-SEP-2007
PROJECT NUMBER:	AC 1M CULV (9)	DRAWN BY:	MAL
FILE NAME:	05k286\survey\05k286t1.dgn	CHECKED BY:	DMB
PROJECT LEADER:	LANDRY	DESIGNED BY:	MRP
		SHEET	10 OF 63