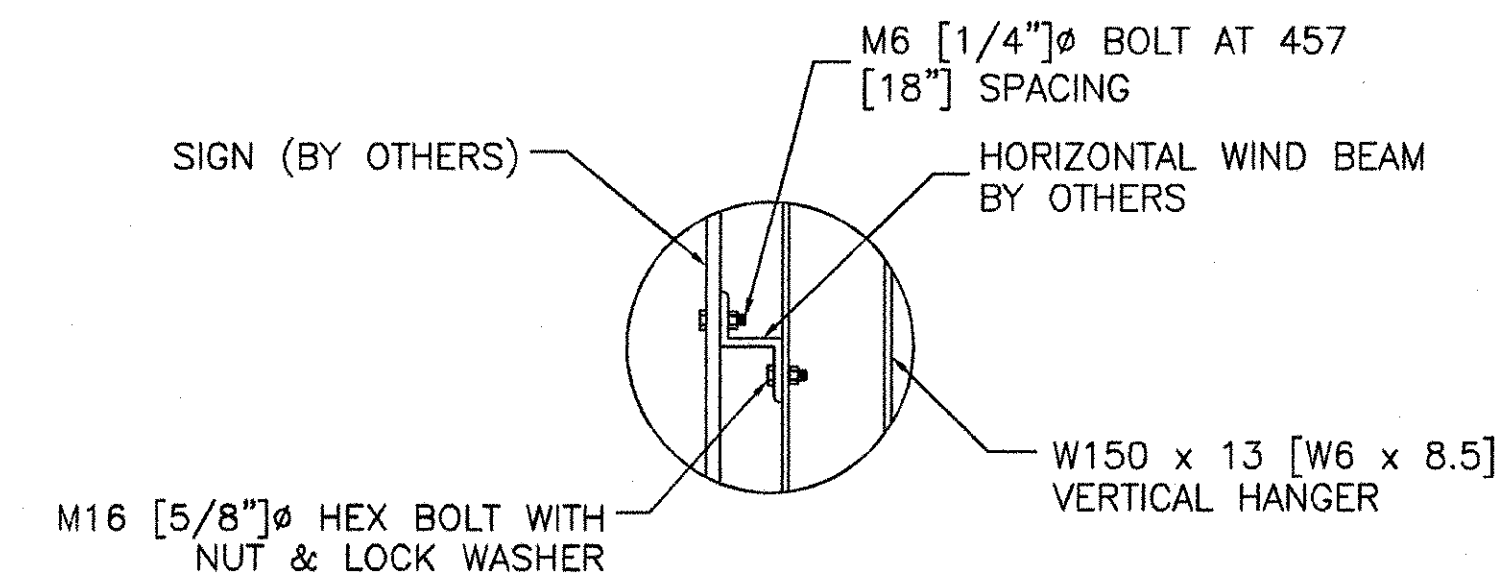


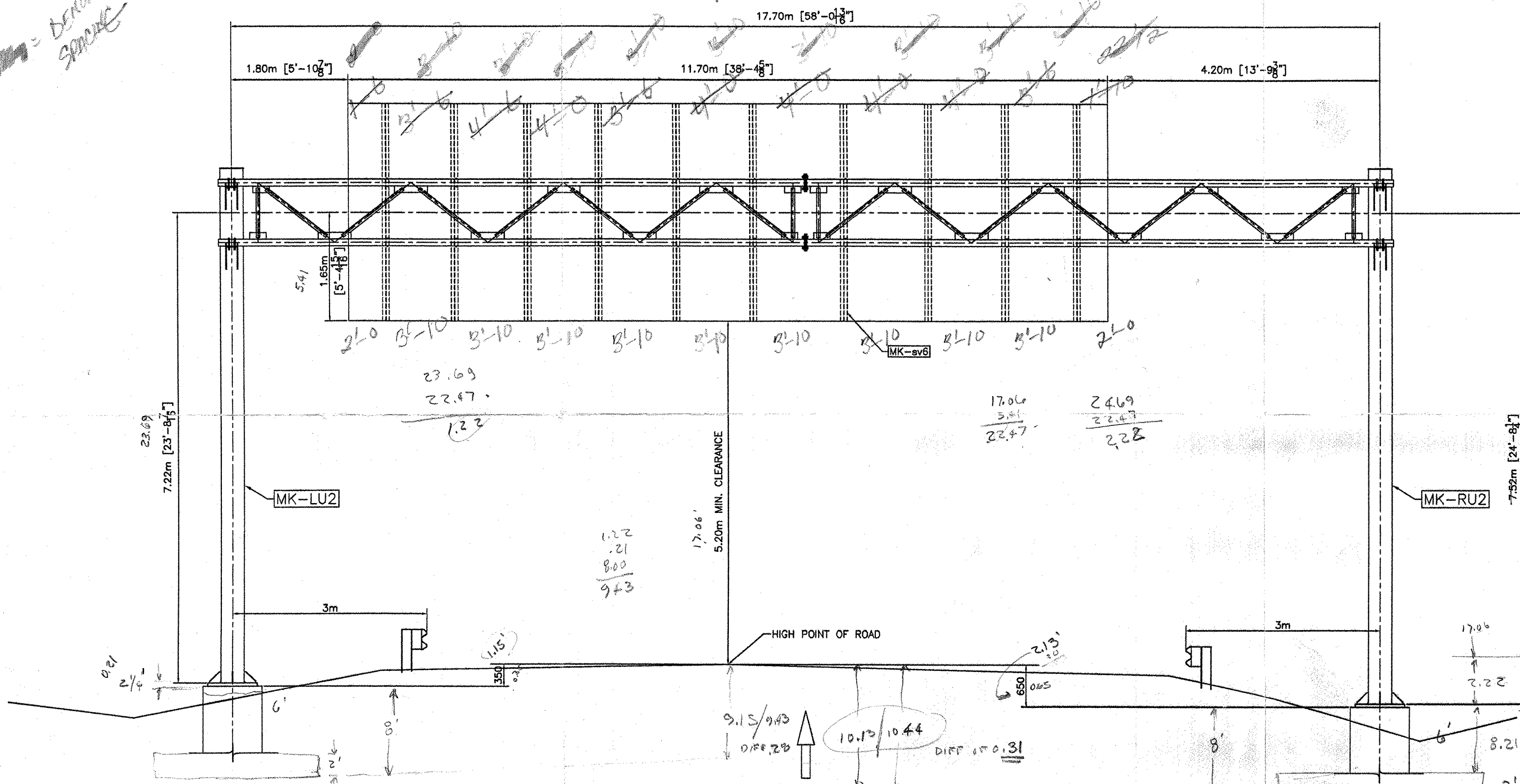
SECTION A

SIGN PANEL (typ.) BY OTHERS



SIGN ATTACHMENT DETAIL

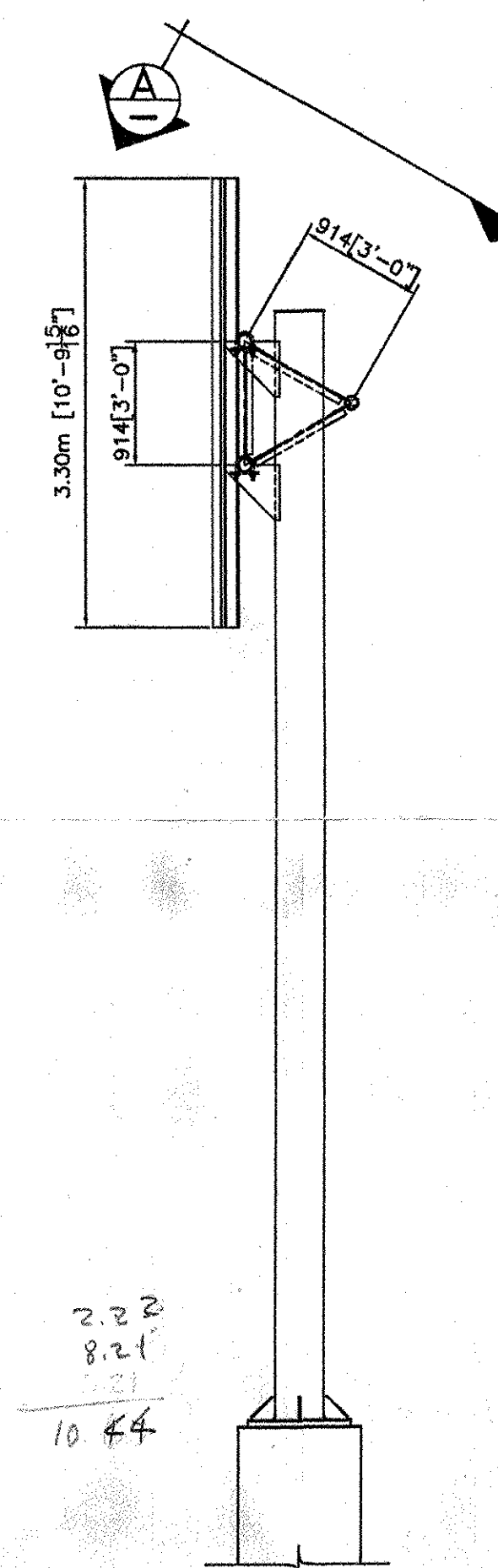
Handwritten note: = DENOTES SPACING



ELEVATION

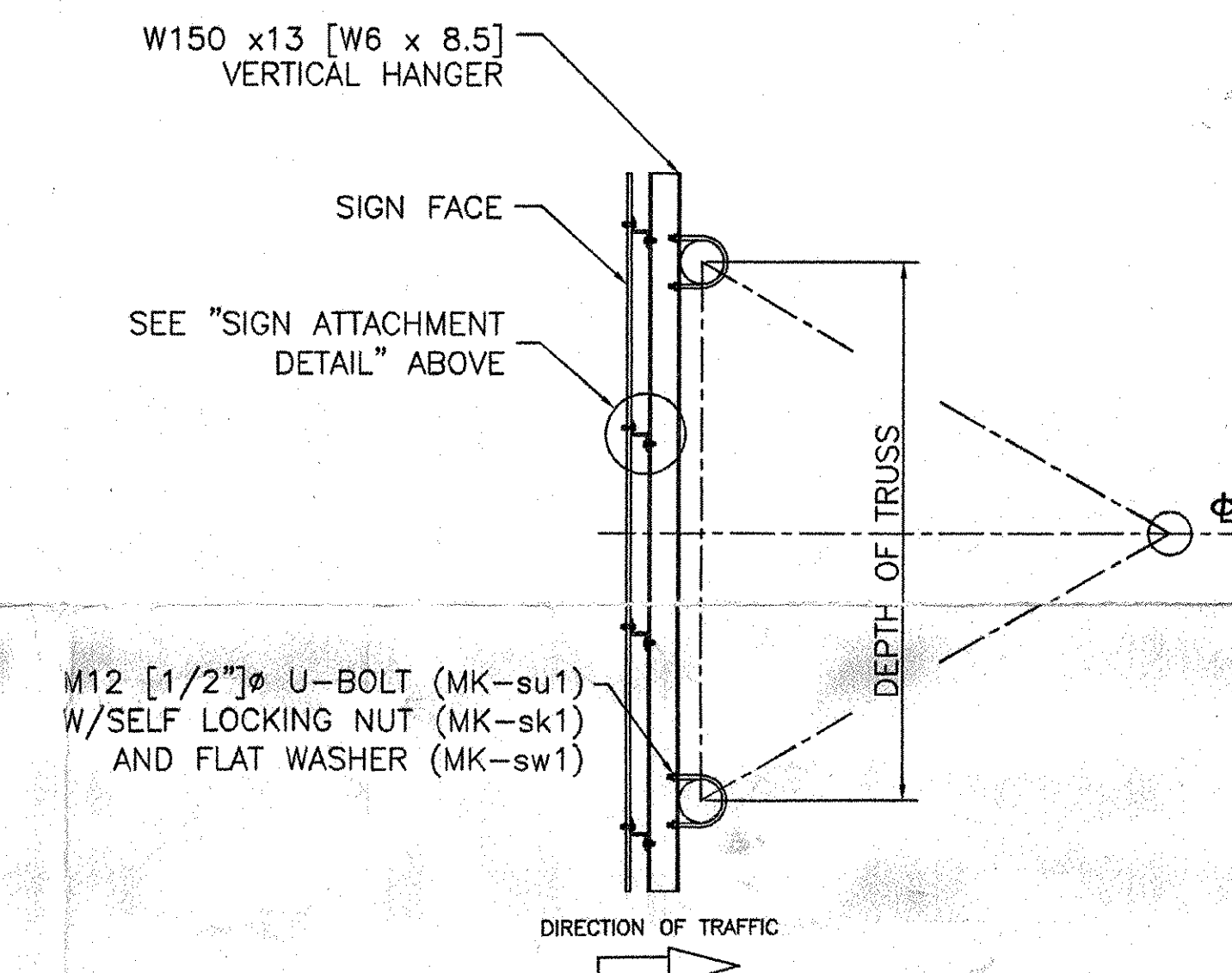
LOOKING AT FACE OF SIGN
(OUT OF PLANE CHORDS NOT SHOWN FOR CLARITY)

FOOTING ELEVATION IS ASSUMED.
CONTRACTOR TO VERIFY ELEVATIONS
BEFORE FABRICATION.

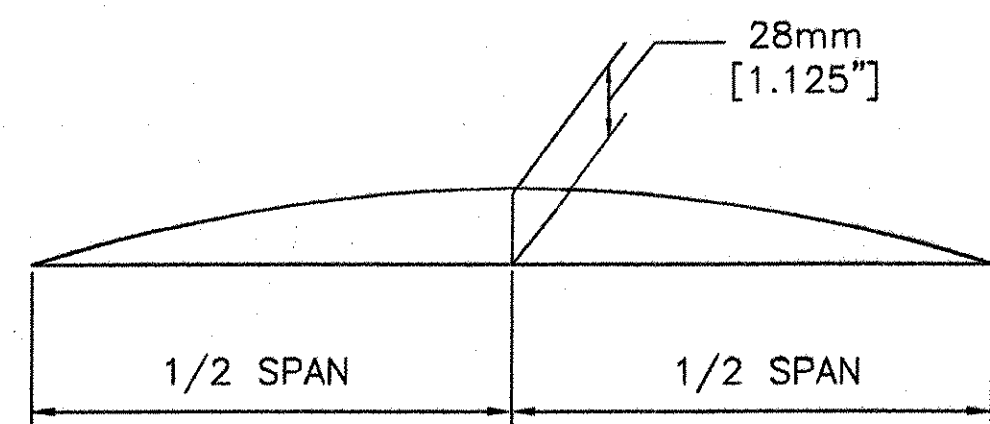


DIRECTION OF TRAFFIC

SIDE VIEW



SIGN MOUNTING DETAIL
VERTICAL HANGER BEAMS & U-BOLTS INCLUDED



CAMBER DIAGRAM

NOTE:

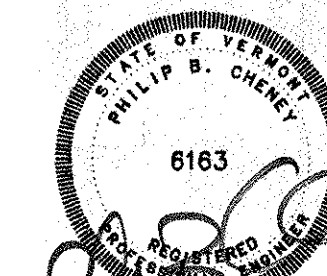
CAMBER WILL BE ACHIEVED BY SHORTENING LOWER CHORD PIPES BY AN AMOUNT SUCH THAT POSITIVE UPWARD DEFLECTION IS PRODUCED WHEN TRUSSES ARE BROUGHT TOGETHER AT SPLICES.

Handwritten note: NB 10.05

REVISIONS		
No.	Remarks	Date
0	Initial submittal	

ALL DIMENSIONS SHOWN ARE IN MILLIMETERS (mm) UNLESS OTHERWISE NOTED. ENGLISH CONVERSION SHOWN IN [] FOR REFERENCE ONLY.

RECEIVED
CHKD BY: *bx*
DATE: JUL 27 2007
RESUBMIT: APPROVED: *X*
BY: *bx* DATE: 08/02/07



HIGHWAY SAFETY CORP.
GLASTONBURY, CT

TRI-CHORD SIGN STRUCTURE
STATE OF VERMONT
COUNTY OF CALEDONIA
MM 10.050 NB
PROJECT No. HES 091-3(42)
HES 093-1(10)

DRAWN: MHM
CHECKED: *P. Radice*
DATE: 5/23/07
SCALE: N.T.S.
PISC REFERENCE NO.: 1587e
SIZE: D REVISION: 0
SHEET NO.: 1 of 8

GENERAL CONTRACTOR:
SUB CONTRACTOR: F.R. LAFAYETTE