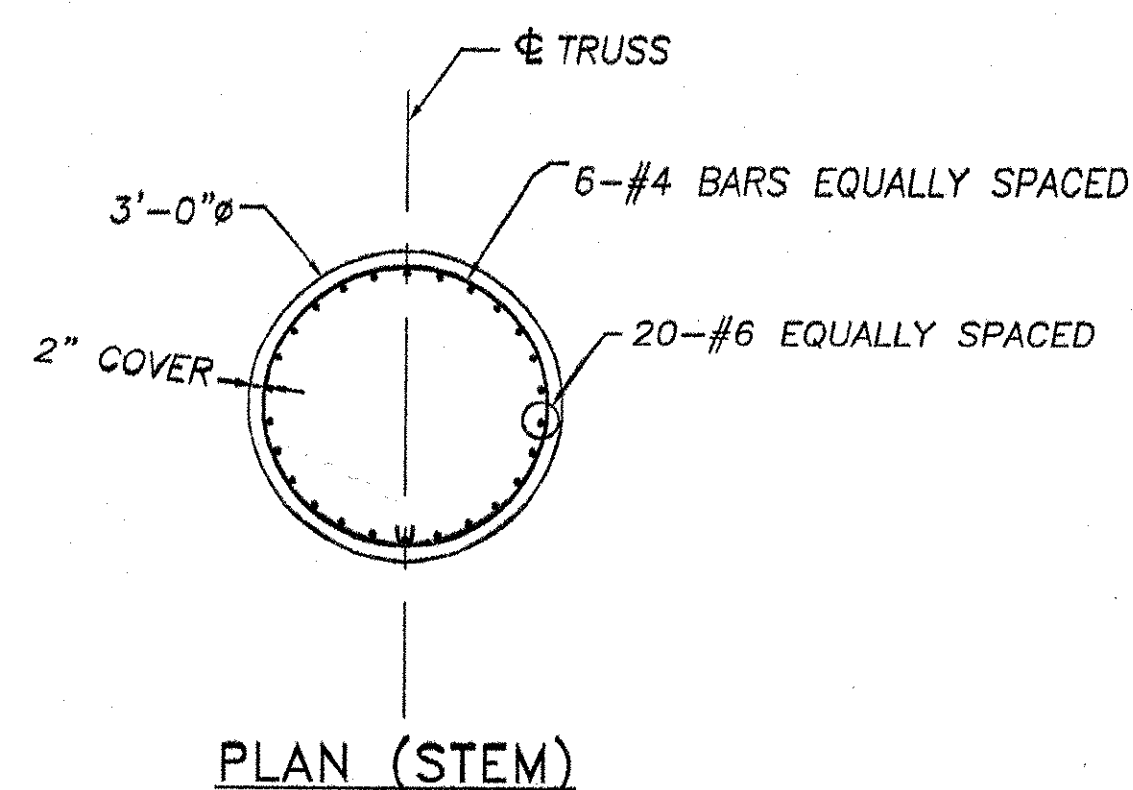
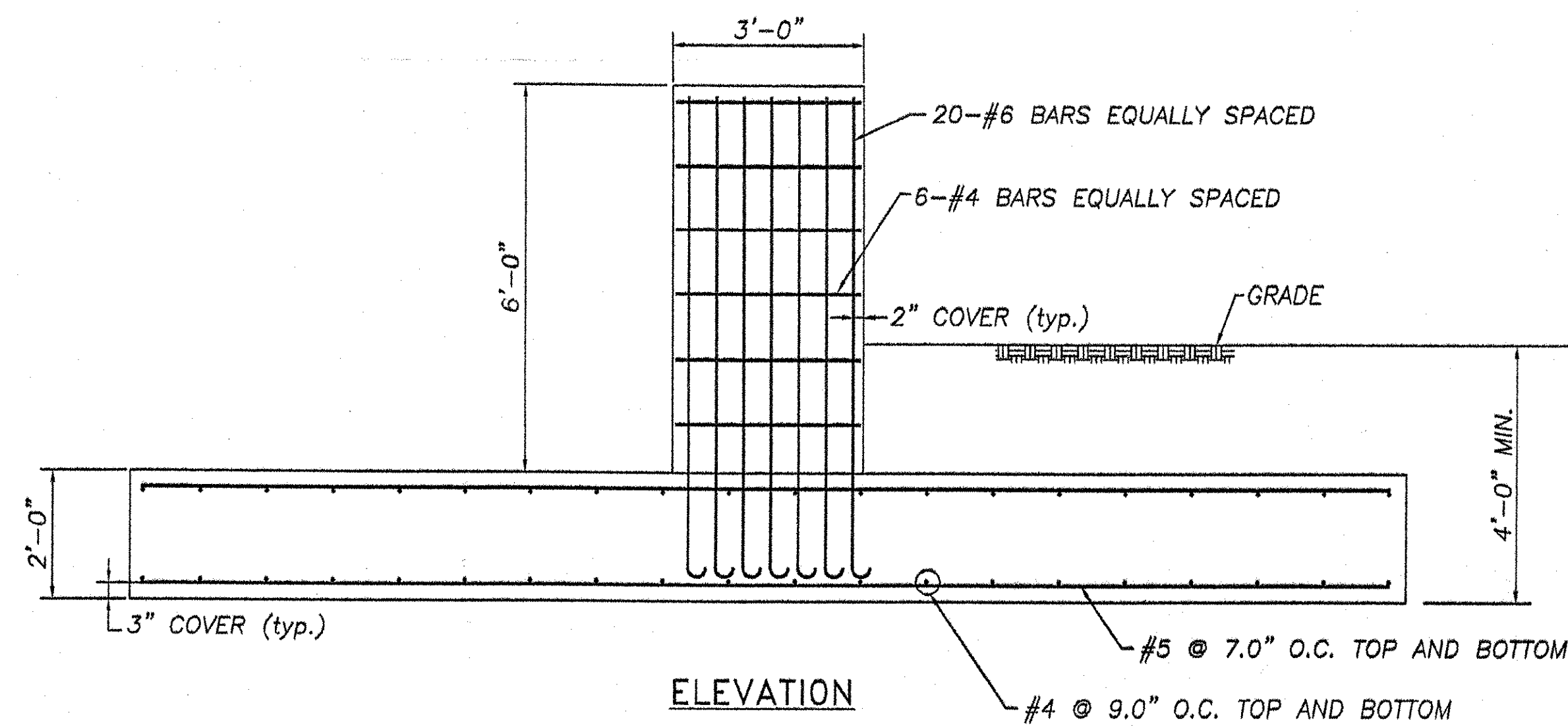


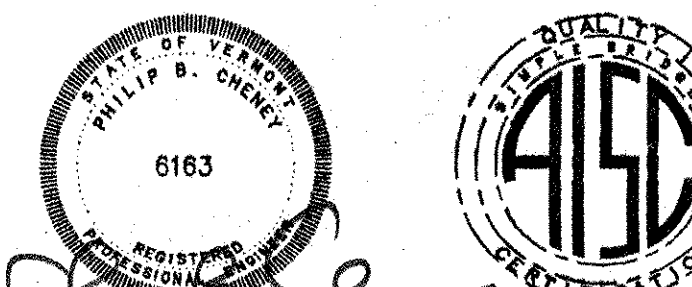
REBAR LIST

REBAR	PCS. REQD.	LENGTH
#4	12	9'-4"
#4	88	13'-6"
#5	84	19'-6"
#6 (HOOK ONE END)	40	8'-6"



REVISIONS		
No.	Remarks	Date
0	Initial submittal	

RECEIVED
 DCD BY *aw* OK'D BY _____
 JUL 27 2007
 RESUBMIT APPROVED *X*
 BY _____ DATE 07/31/07



HIGHWAY SAFETY CORP.
 GLASTONBURY, CT

TRI-CHORD SIGN STRUCTURE
 STATE OF VERMONT
 COUNTY OF CALEDONIA
 MM 129.130 SB
 PROJECT No. HES 091-3(42)
 HES 093-1(10)

DRAWN MHM
 CHECKED *P. Radwin*
 DATE 5/23/07
 SCALE N.T.S.
 HSC REFERENCE NO. 1587d
 SIZE D REVISION 0
 SHEET NO. 8 of 8

GENERAL CONTRACTOR
 SUB CONTRACTOR F.R. LAFAYETTE