

646.426 DURABLE 6 INCH WHITE LINE, RECESSED
 NORTHBOUND REST AREA:
 STA. X1+00.0 - STA. X34+78.0 (EDGE LINE RT)
 STA. X1+00.0 - STA. X5+10.0 (DOTTED LANE LINE LT)
 STA. X5+10.0 - STA. X6+20.0 (DASHED LANE LINE LT)
 STA. X9+15.0 - STA. X22+25.0 (EDGE LINE LT)
 STA. X25+18.0 - STA. X28+48.0 (DASHED LANE LINE LT)

646.632 TEMPORARY 6 INCH YELLOW LINE, PAINT
 NORTHBOUND REST AREA:
 STA. X7+60.0 - STA. X23+48.0 (EDGE LINE LT)
 STA. X9+25.0 - STA. X14+64.0 (EDGE LINE LT)
 STA. X17+67.0 - STA. X22+25.0 (EDGE LINE LT)

646.466 DURABLE 12 INCH WHITE LINE, RECESSED
 NORTHBOUND REST AREA:
 STA. X6+20.0 - STA. X7+60.0 (SOLID GORE LINES LT)
 STA. X6+70.0 - STA. X7+60.0 (GORE HATCHING LT)
 STA. X9+00.0 - STA. X9+25.0 (SOLID GORE LINES LT)
 STA. X22+25.0 - STA. X22+50.0 (SOLID GORE LINES LT)
 STA. X23+48.0 - STA. X25+18.0 (SOLID GORE LINE LT)

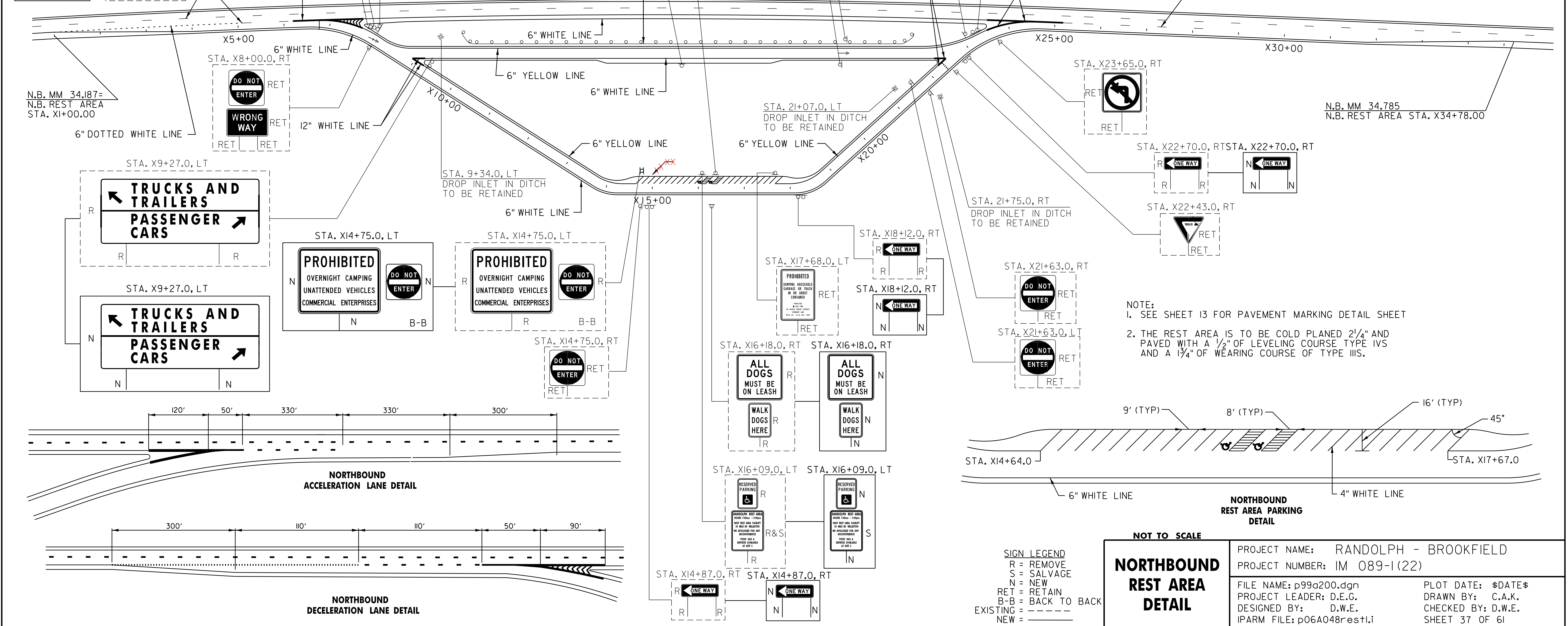
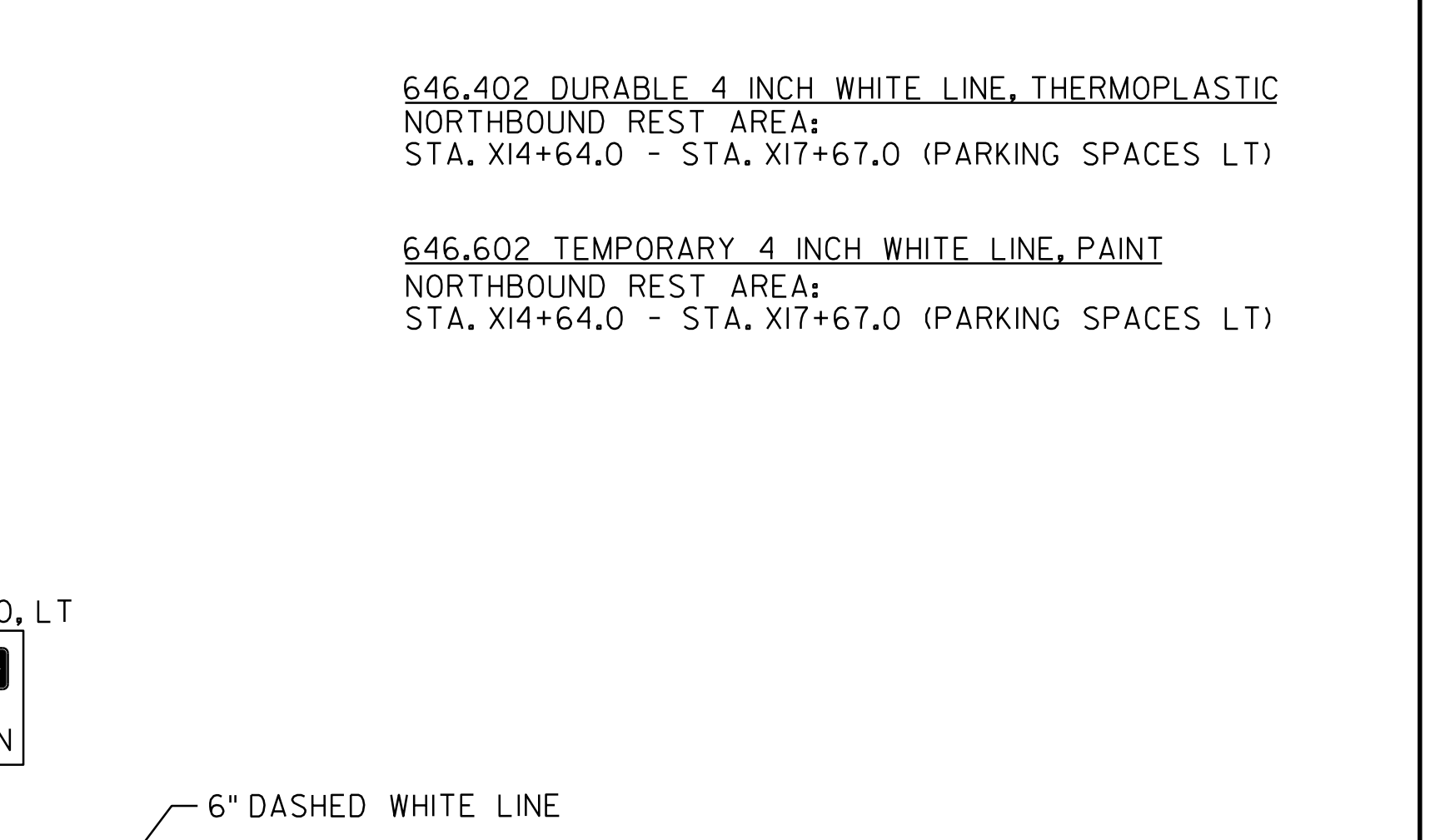
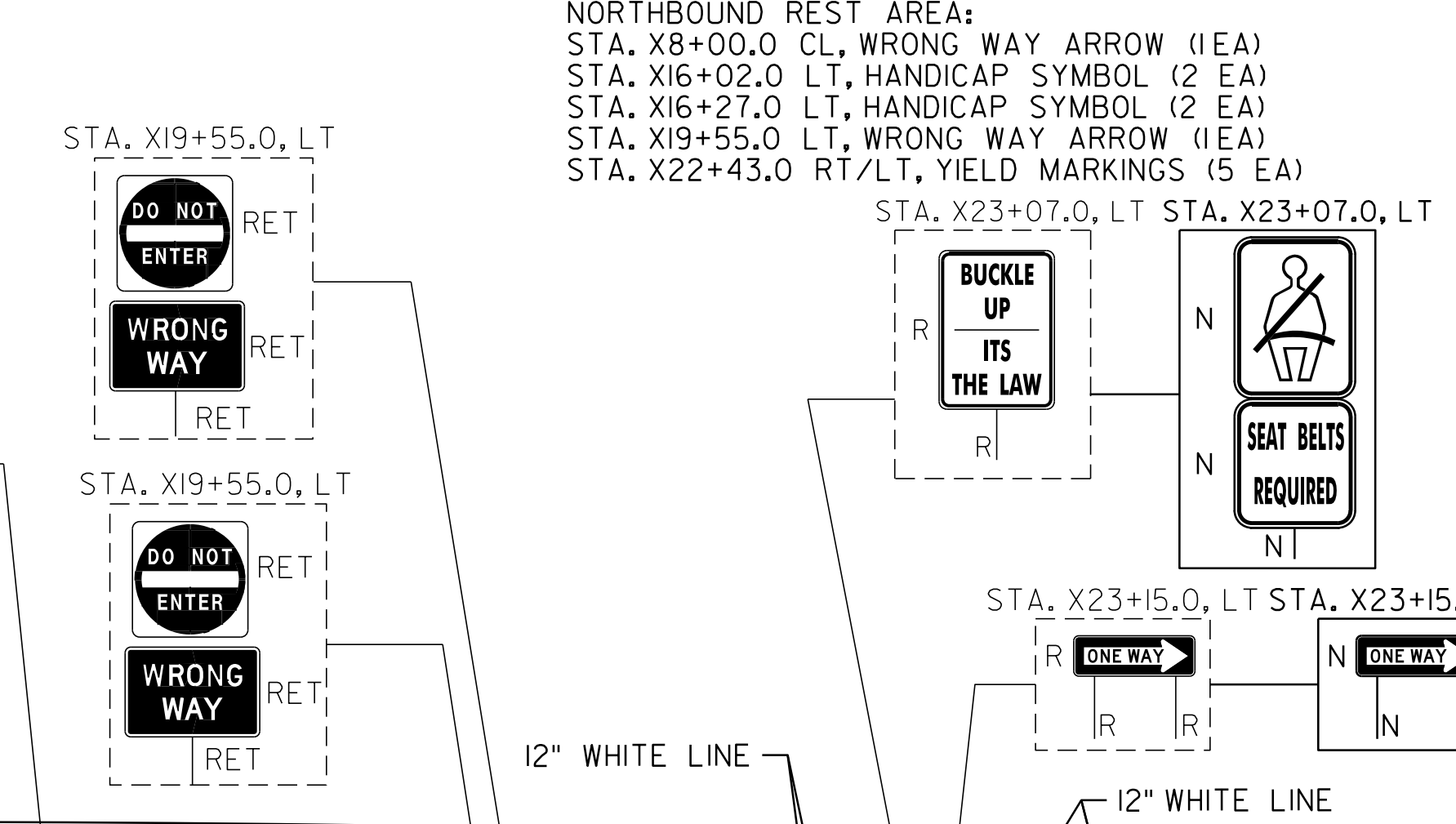
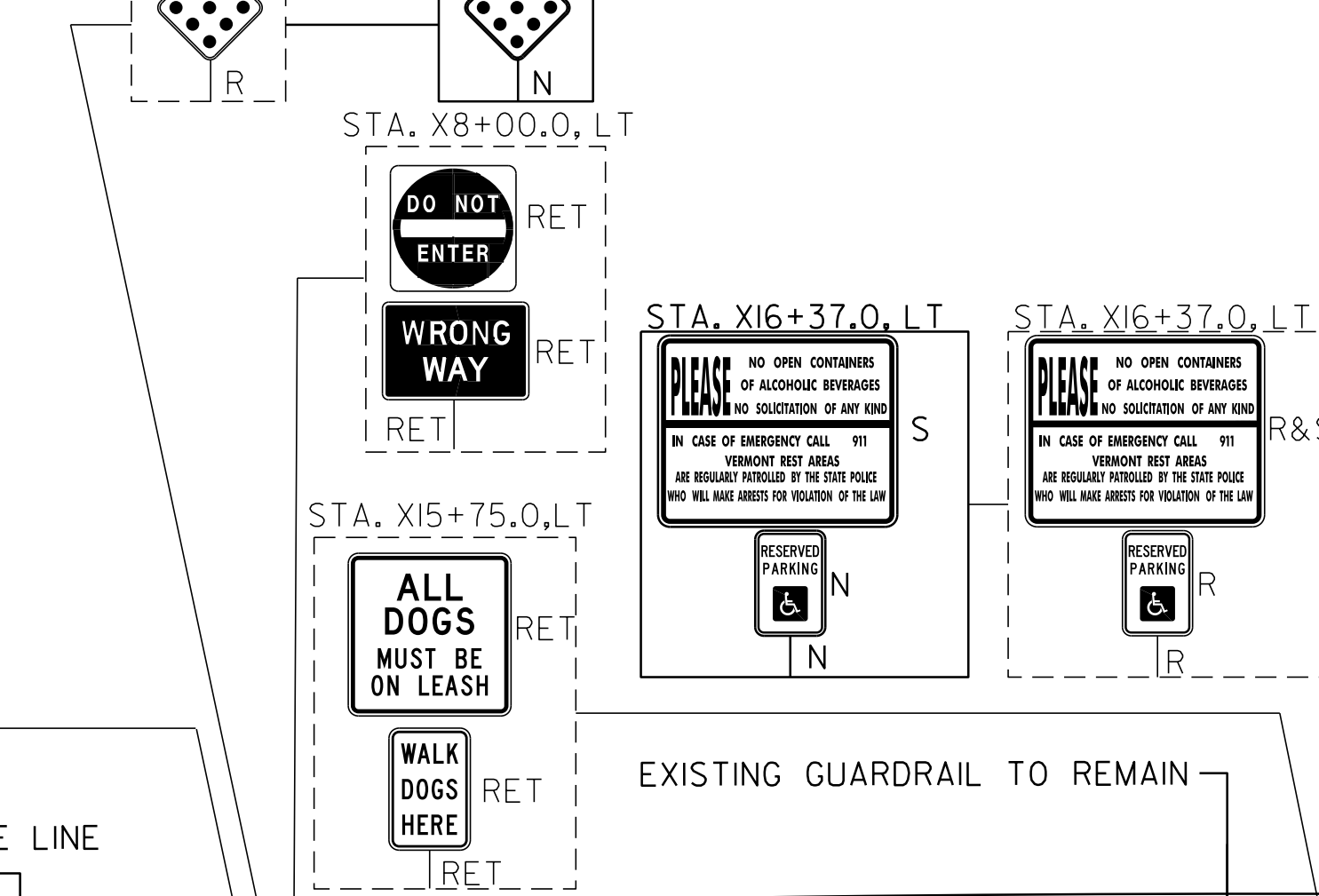
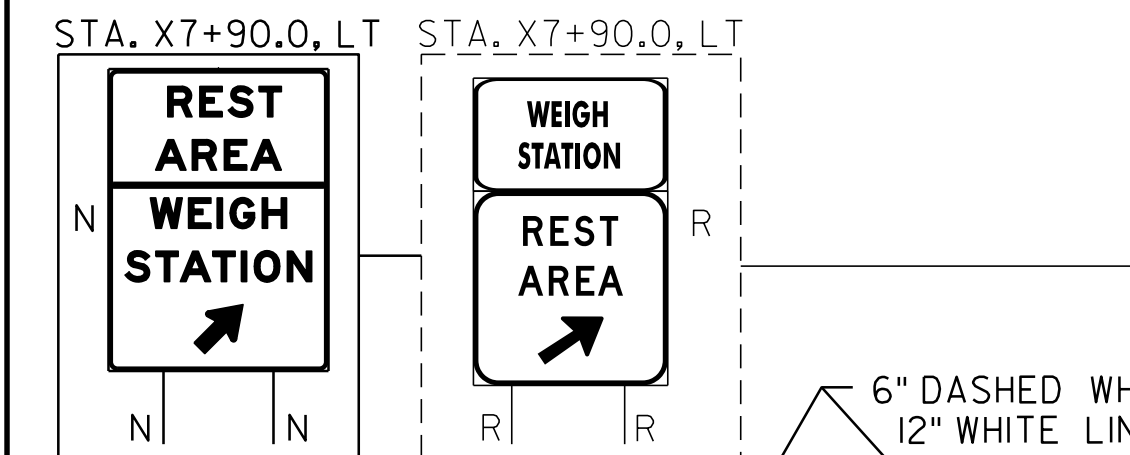
646.662 TEMPORARY 12 INCH WHITE LINE, PAINT
 NORTHBOUND REST AREA:
 STA. X6+20.0 - STA. X7+60.0 (SOLID GORE LINE LT)
 STA. X9+00.0 - STA. X9+25.0 (SOLID GORE LINES LT)
 STA. X22+25.0 - STA. X22+50.0 (SOLID GORE LINE LT)
 STA. X23+48.0 - STA. X25+18.0 (SOLID GORE LINES LT)

646.692 TEMPORARY LETTER OR SYMBOL, PAINT
 NORTHBOUND REST AREA:
 STA. X8+00.0 CL, WRONG WAY ARROW (2 EA)
 STA. X16+02.0 LT, HANDICAP SYMBOL (4 EA)
 STA. X16+27.0 LT, HANDICAP SYMBOL (4 EA)
 STA. X19+55.0 LT, WRONG WAY ARROW (2 EA)
 STA. X22+43.0 RT/LT, YIELD MARKINGS (10 EA)

675.50 REMOVING SIGNS
 AS SHOWN - 16
 675.60 ERECTING SALVAGED SIGNS
 AS SHOWN - 2

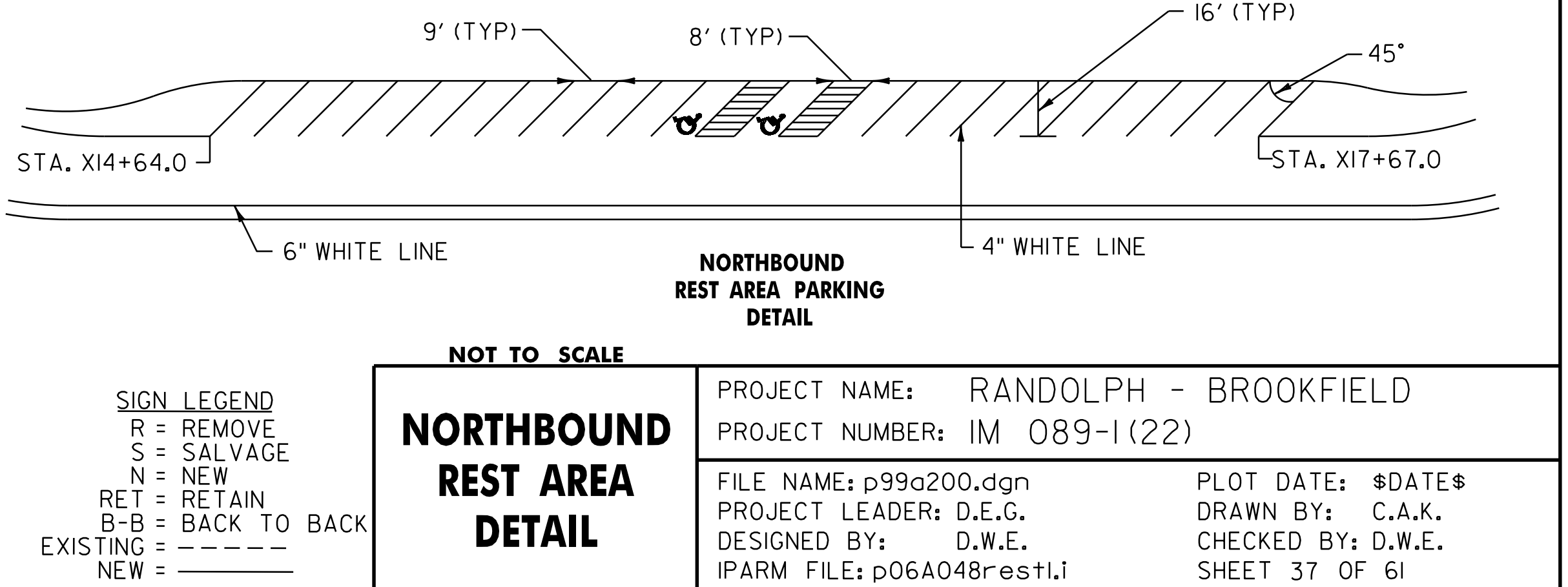
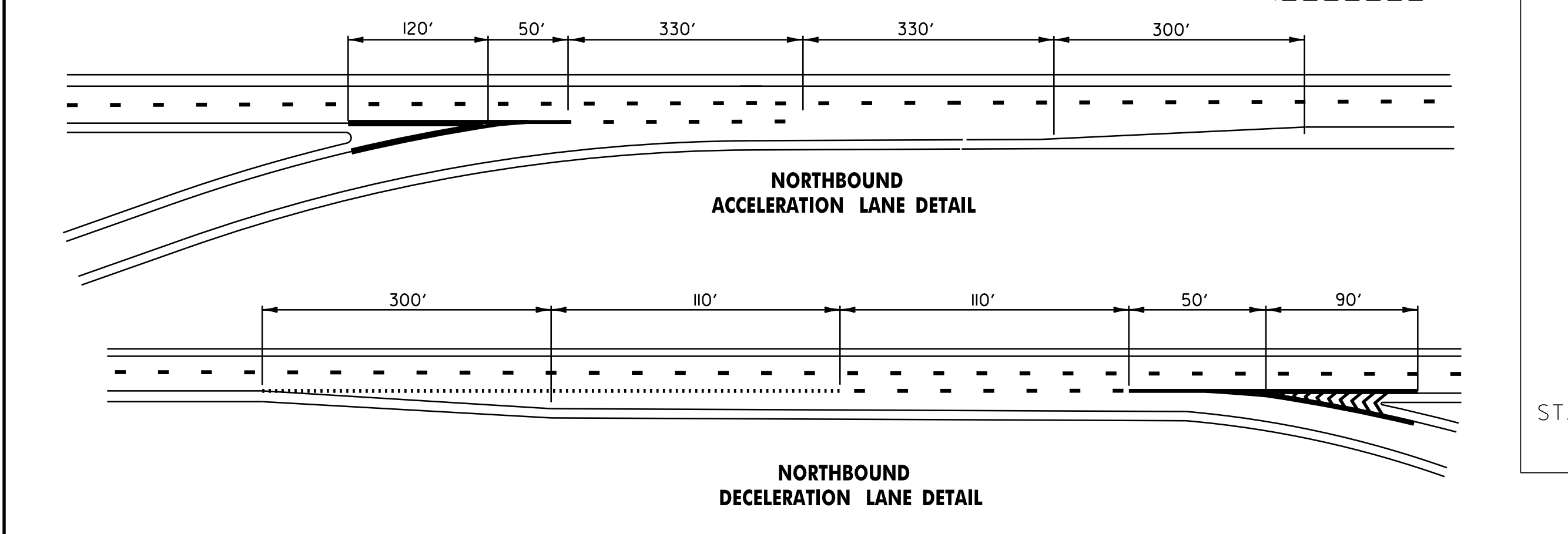
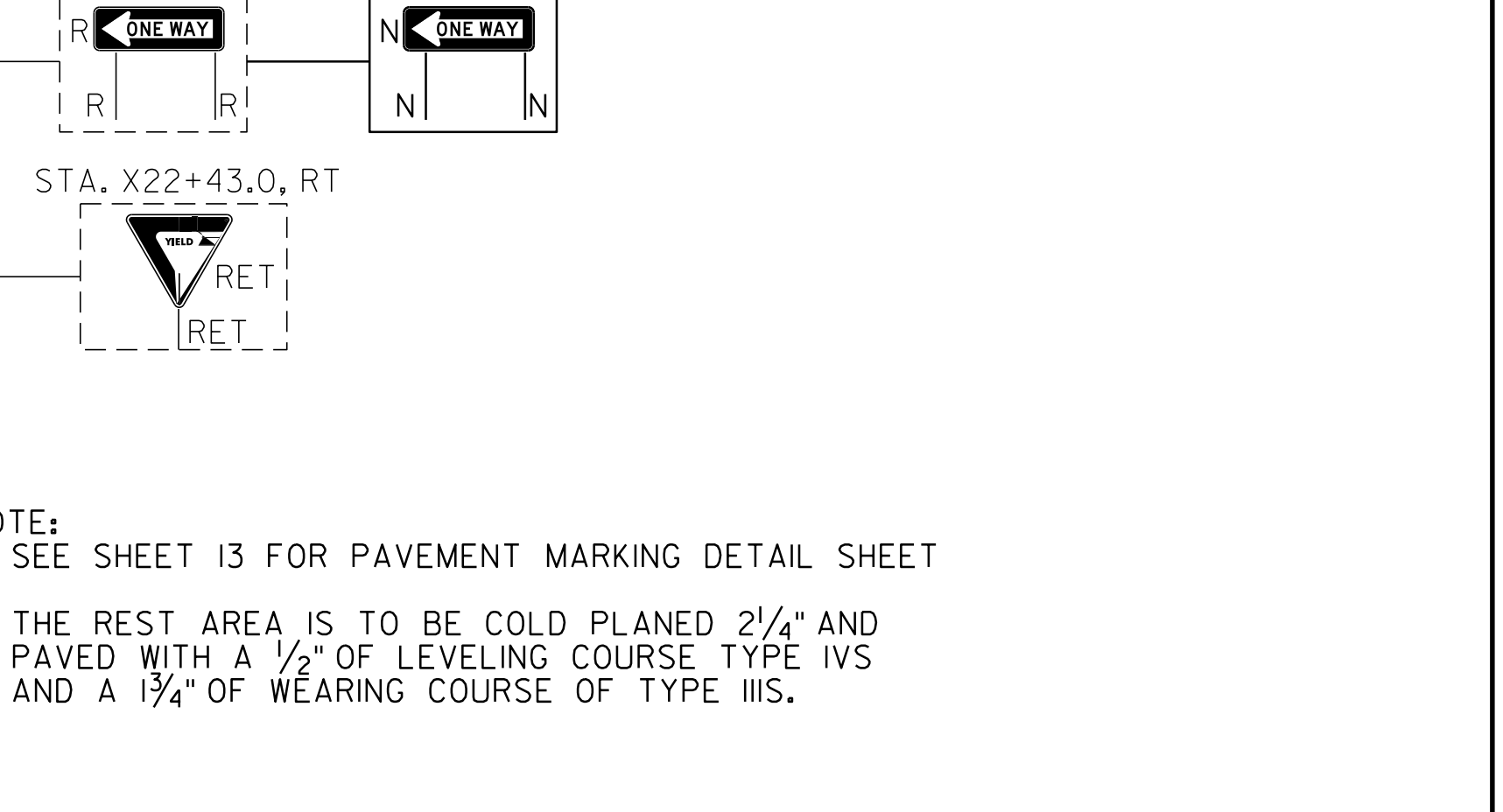
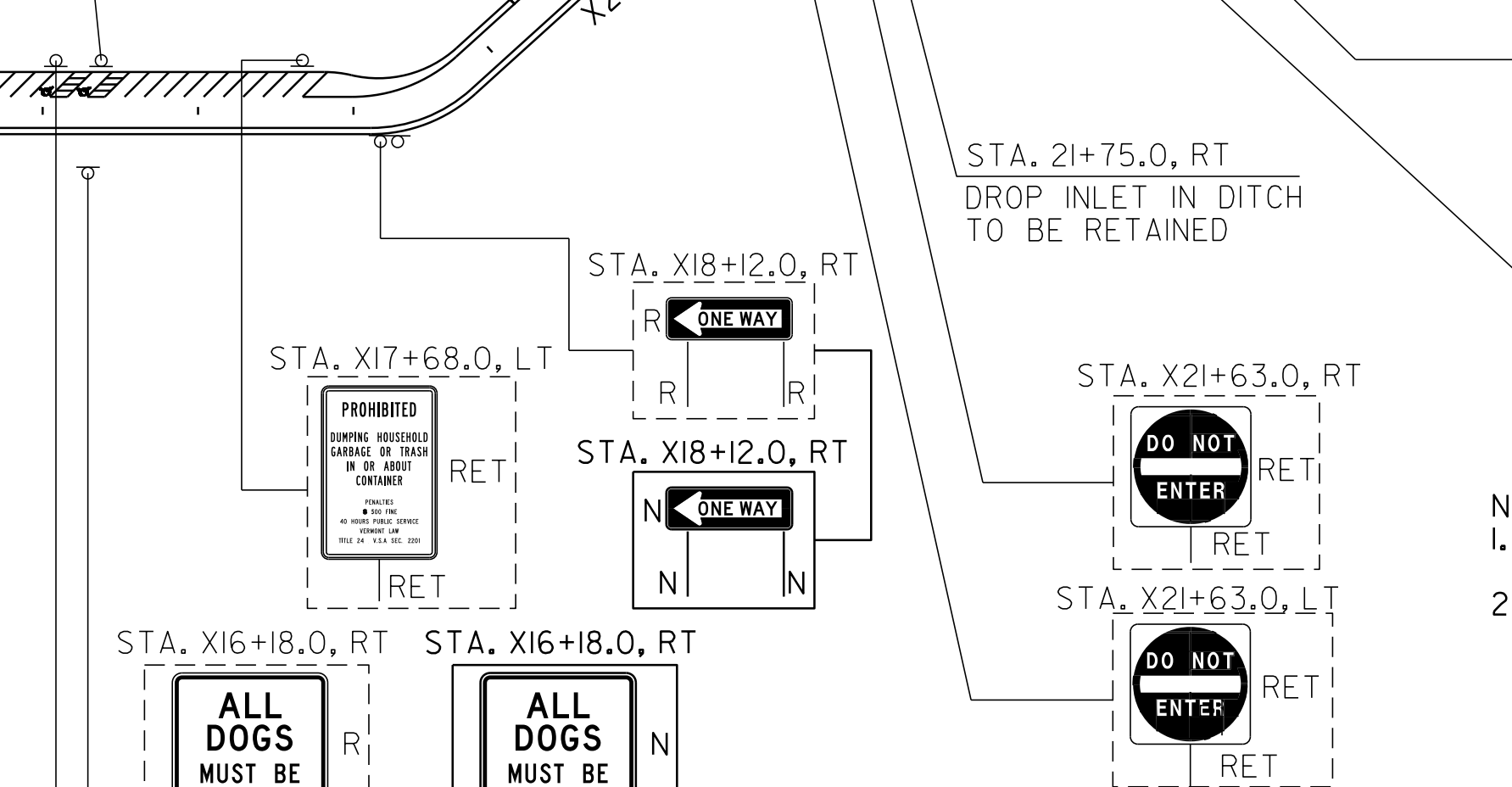
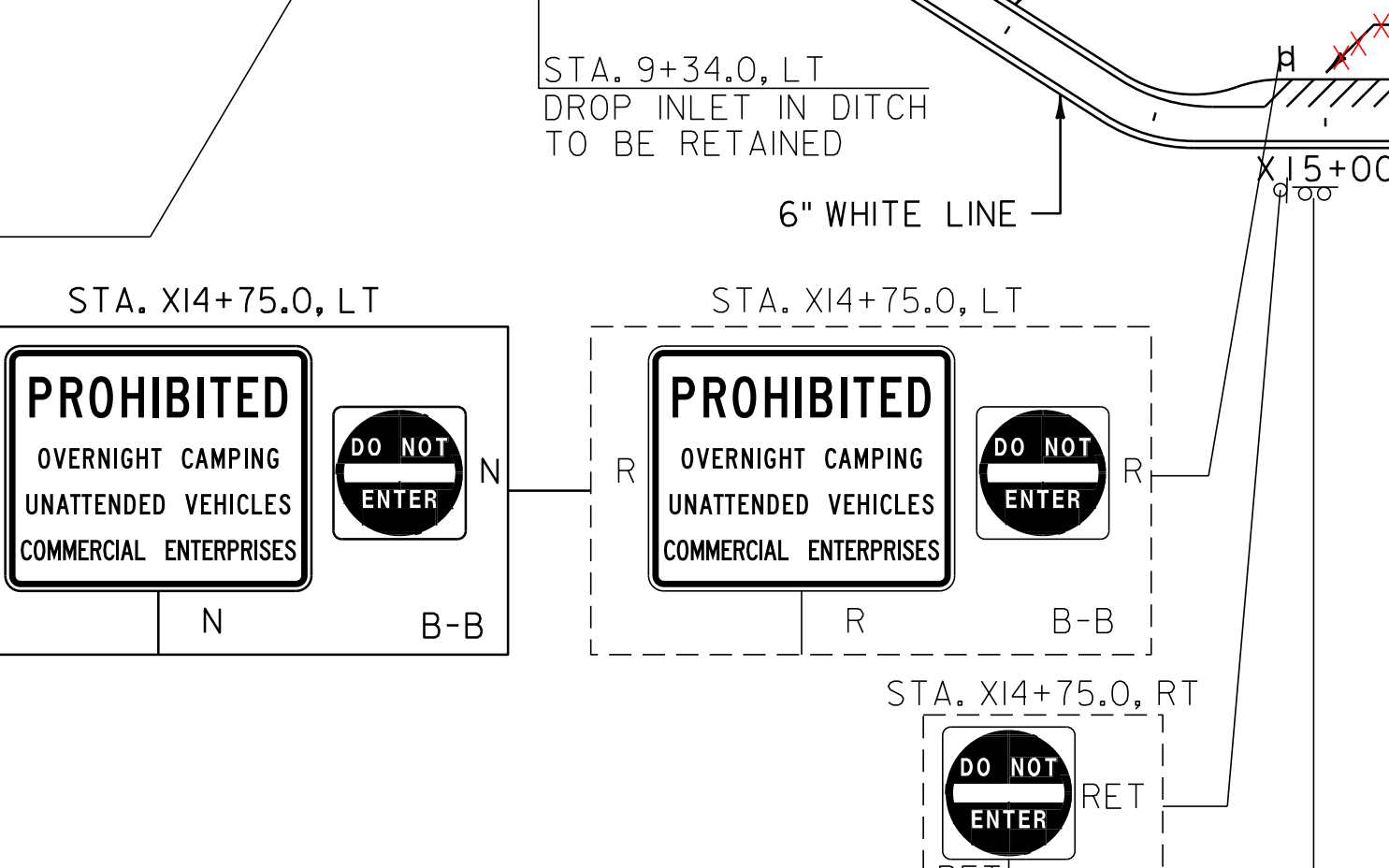
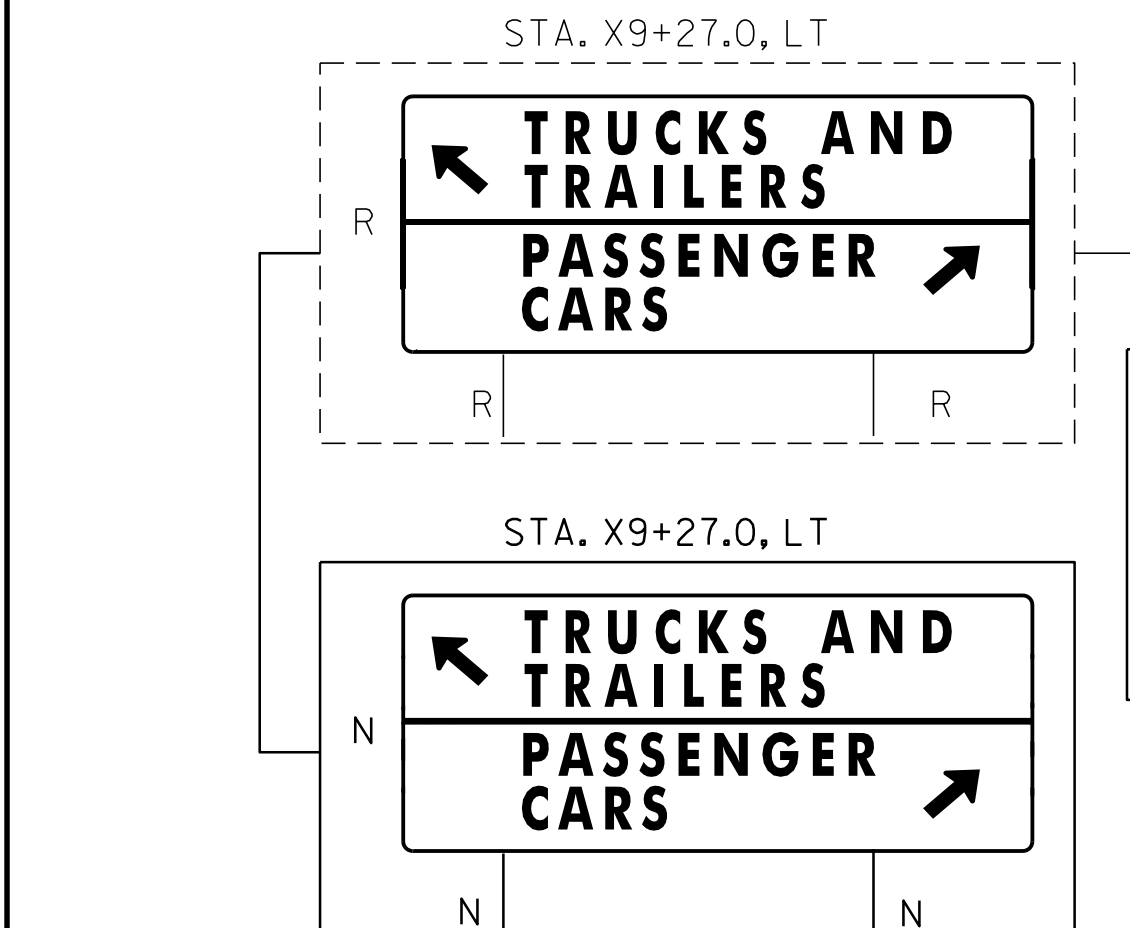
646.622 TEMPORARY 6 INCH WHITE LINE, PAINT
 NORTHBOUND REST AREA:
 STA. X1+00.0 - STA. X34+78.0 (EDGE LINE RT)
 STA. X1+00.0 - STA. X5+10.0 (DOTTED LANE LINE LT)
 STA. X5+10.0 - STA. X6+20.0 (DASHED LANE LINE LT)
 STA. X9+15.0 - STA. X22+25.0 (EDGE LINE LT)
 STA. X25+18.0 - STA. X28+48.0 (DASHED LANE LINE LT)

646.436 DURABLE 6 INCH YELLOW LINE, RECESSED
 NORTHBOUND REST AREA:
 STA. X7+60.0 - STA. X23+48.0 (EDGE LINE LT)
 STA. X9+25.0 - STA. X14+64.0 (EDGE LINE LT)
 STA. X17+67.0 - STA. X22+25.0 (EDGE LINE LT)



N.B. MM 34.187 =
 N.B. REST AREA
 STA. X1+00.00

N.B. MM 34.785
 N.B. REST AREA
 STA. X34+78.00



NOTE:
 1. SEE SHEET 13 FOR PAVEMENT MARKING DETAIL SHEET
 2. THE REST AREA IS TO BE COLD PLANED 2 1/4" AND PAVED WITH A 1/2" OF LEVELING COURSE TYPE IVS AND A 1 3/4" OF WEARING COURSE OF TYPE IIS.

SIGN LEGEND
 R = REMOVE
 S = SALVAGE
 N = NEW
 RET = RETAIN
 B-B = BACK TO BACK
 EXISTING = ---
 NEW = _____

NORTHBOUND REST AREA DETAIL	NOT TO SCALE	
	PROJECT NAME: RANDOLPH - BROOKFIELD	PROJECT NUMBER: IM 089-1(22)
	FILE NAME: p99a200.dgn PROJECT LEADER: D.E.G. DESIGNED BY: D.W.E. IPARM FILE: p06A048rest1.i	PLOT DATE: \$DATE\$ DRAWN BY: C.A.K. CHECKED BY: D.W.E. SHEET 37 OF 61

FILE NAME = \$FILES\$
DATE/TIME = \$DATE\$ \$TIME\$
USER = \$USER\$