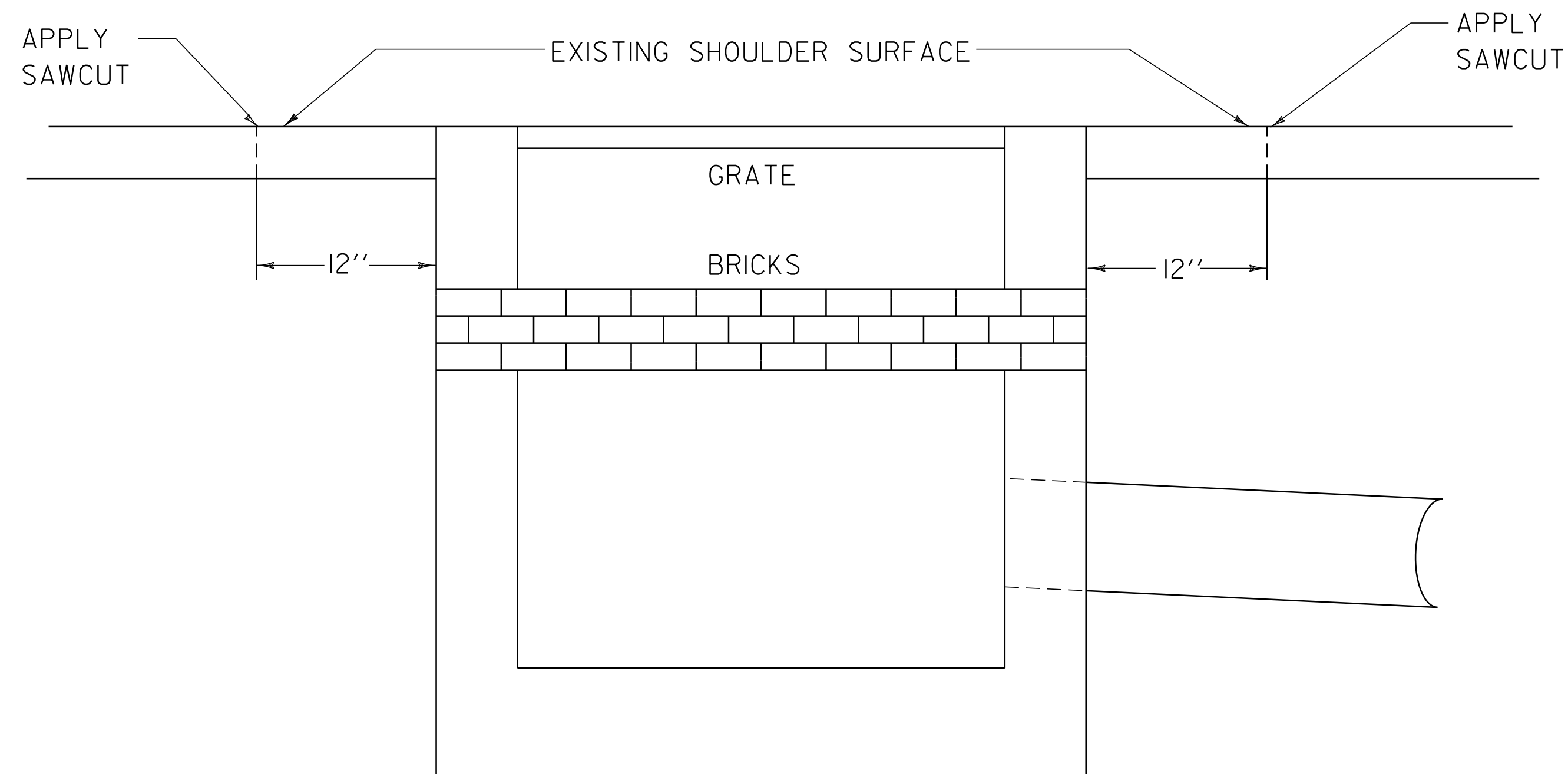
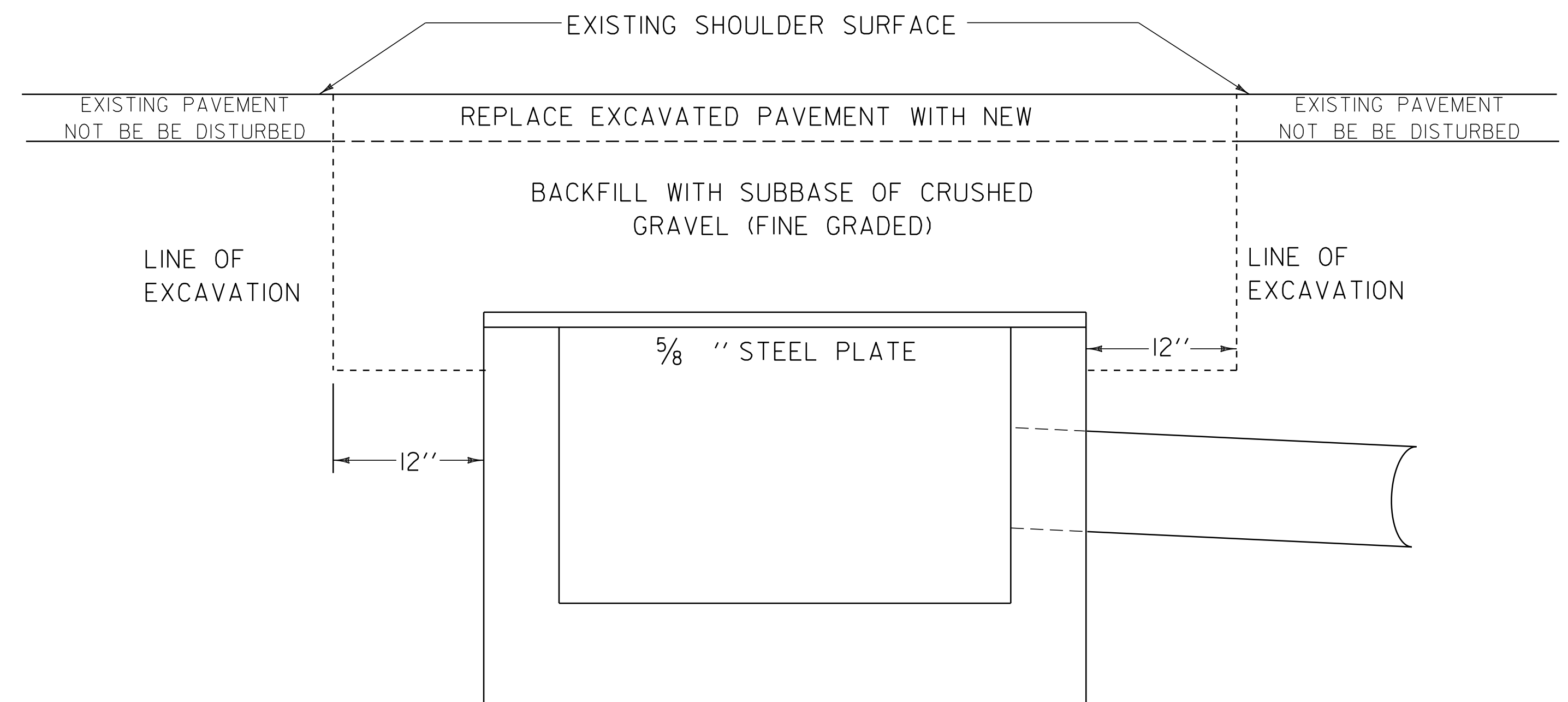


1



EXISTING CURB DROP INLET

2



PROPOSED TREATMENT OF CURB DROP INLET

SAWCUT EXISTING SHOULDER TO MINIMIZE DAMAGE TO ADJACENT PAVEMENT. EXCAVATE TO DEPTH REQUIRED & REMOVE TOP AND BRICKS FROM DI. PLACE STEEL PLATE ON DI AND BACKFILL WITH ITEM 301.26. EXCAVATED BITUMINOUS PAVEMENT SHALL BE REPLACED WITH NEW BITUMINOUS CONCRETE PAVEMENT, TYPE II. APPLICATION OF SAWCUT, REMOVAL AND DISPOSAL OF TOP AND BRICKS, FURNISHING STEEL PLATE, AND REQUIRED EXCAVATION SHALL BE PAID AS ONE EACH OF ITEM 900.620 SPECIAL PROVISION (DECOMMISSION/CAP CURB DROP INLET).

NOT TO SCALE

**CAP CURB DROP INLET DETAIL SHEET**

PROJECT NAME: NEWBURY-ST. JOHNSBURY	
PROJECT NUMBER: AC IM 091-2(76)	
FILE NAME: 06a046	PLOT DATE: 29-JUL-2014 16:46
PROJECT LEADER: PTS	DRAWN BY: VTRANS
DESIGNED BY: VTRANS	CHECKED BY: VTRANS
IPARM FILE NAME: 06A044_I4	SHEET 14 OF 33