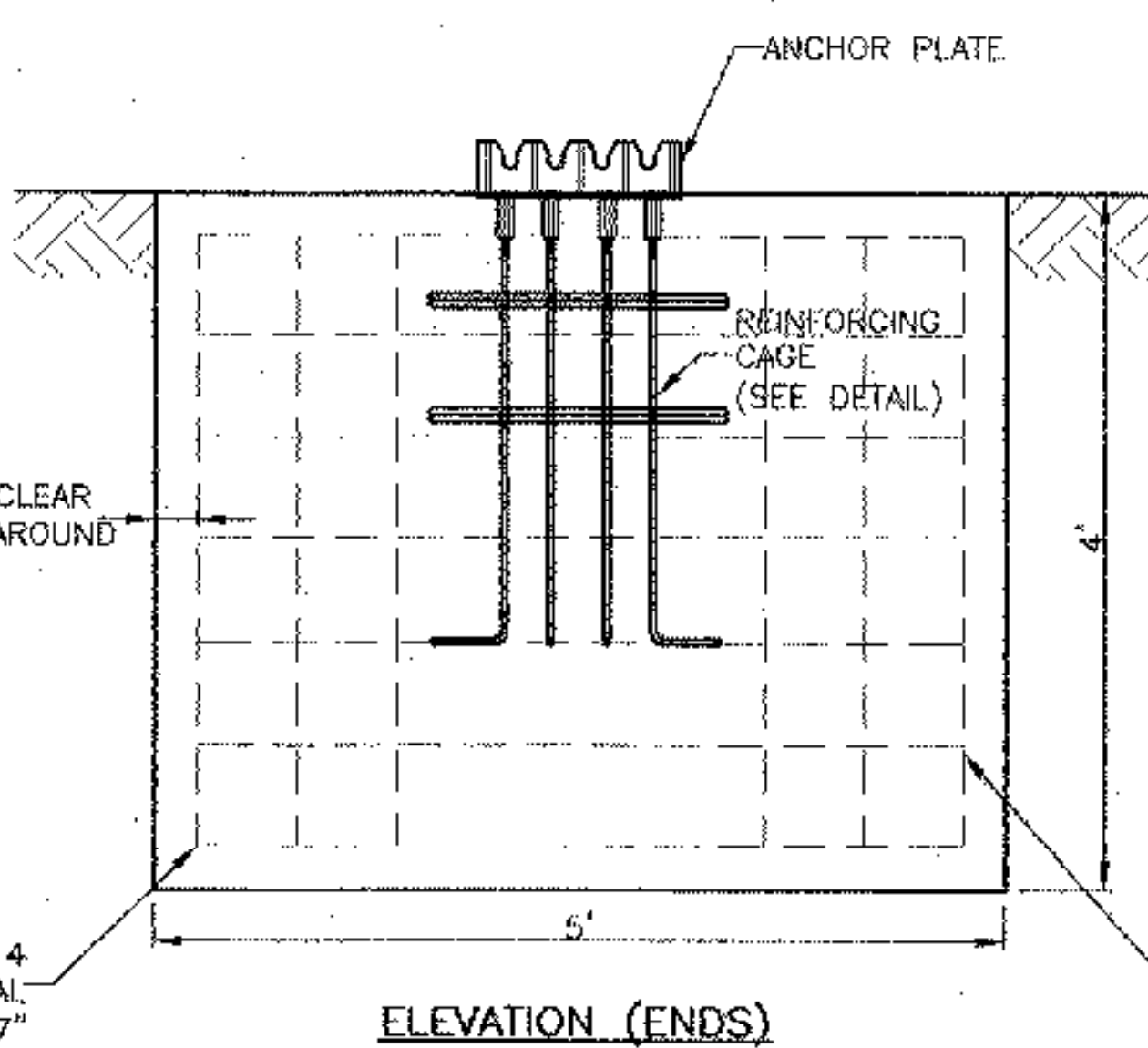
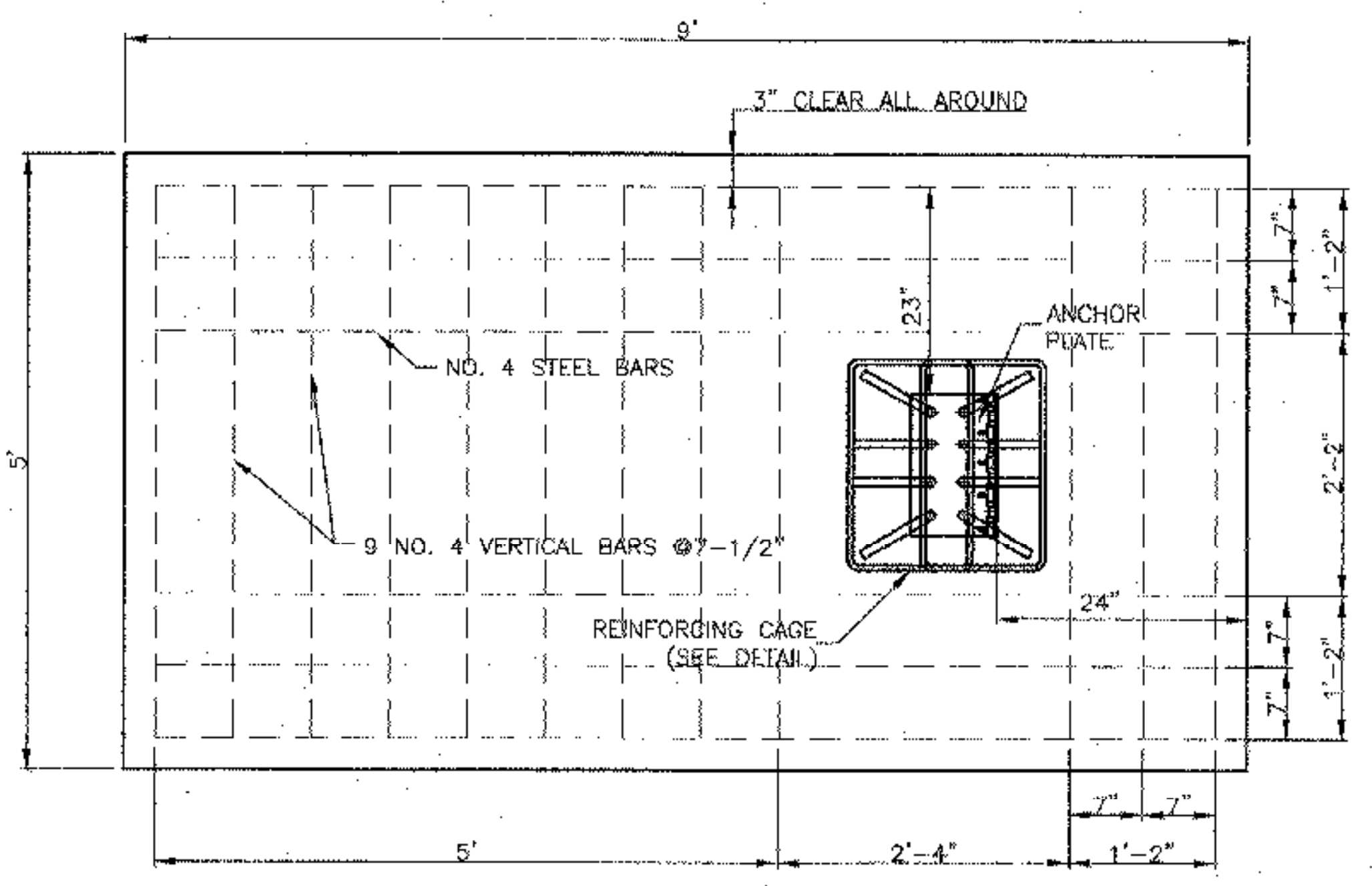
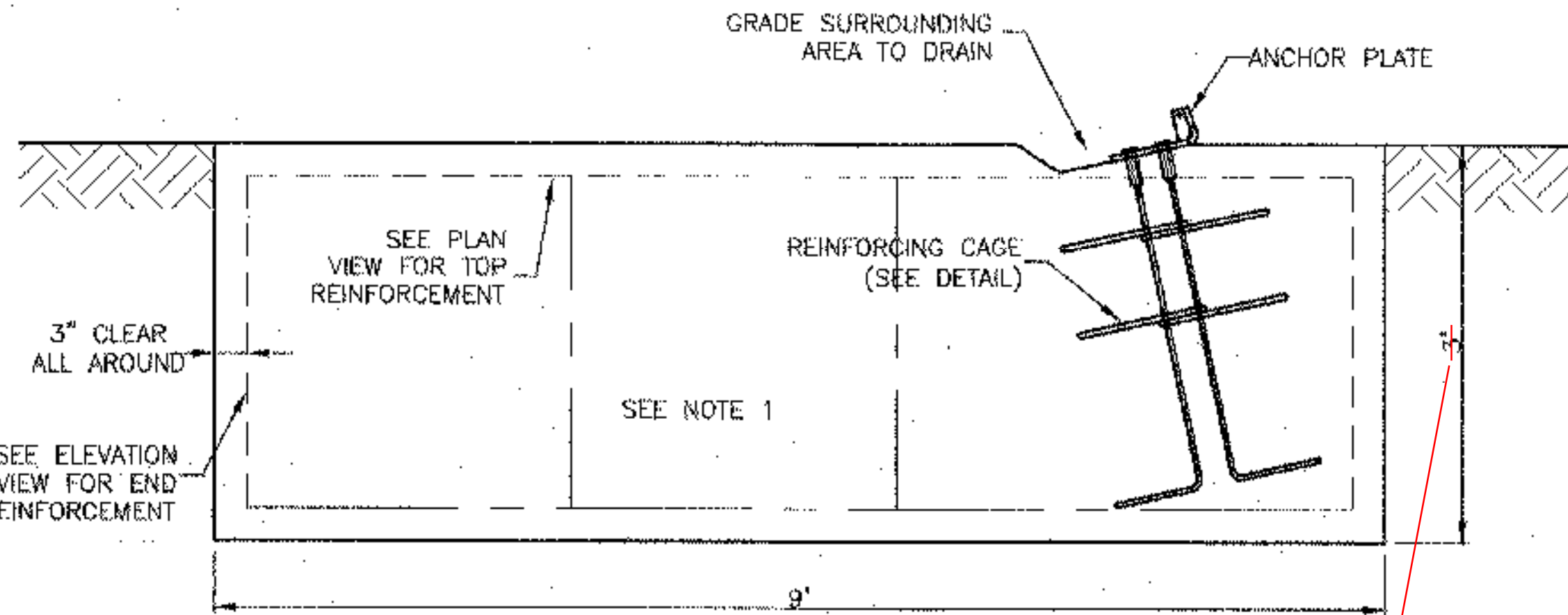


END VIEW SIDE VIEW
REINFORCING CAGE DETAIL

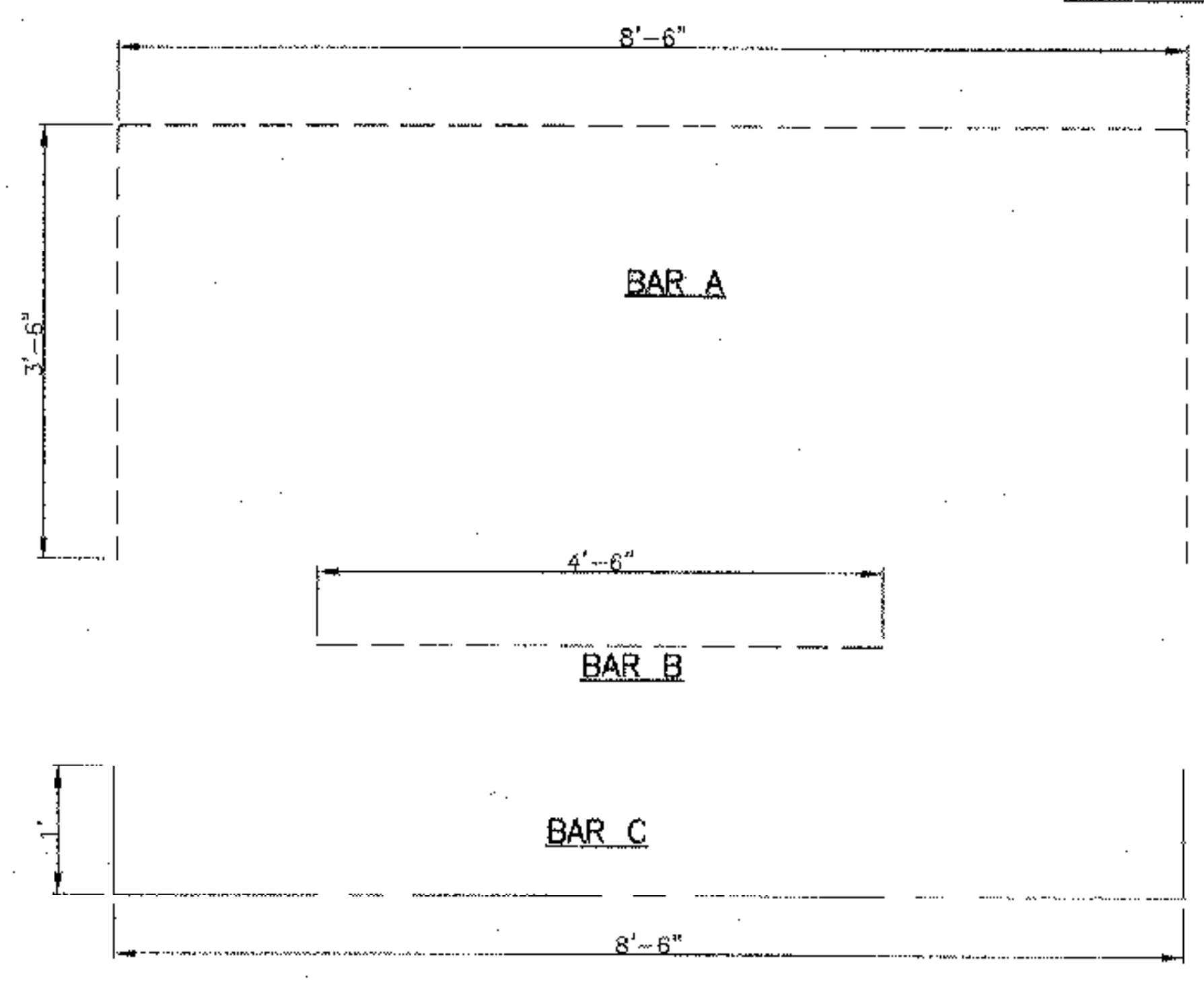


ELEVATION (ENDS)

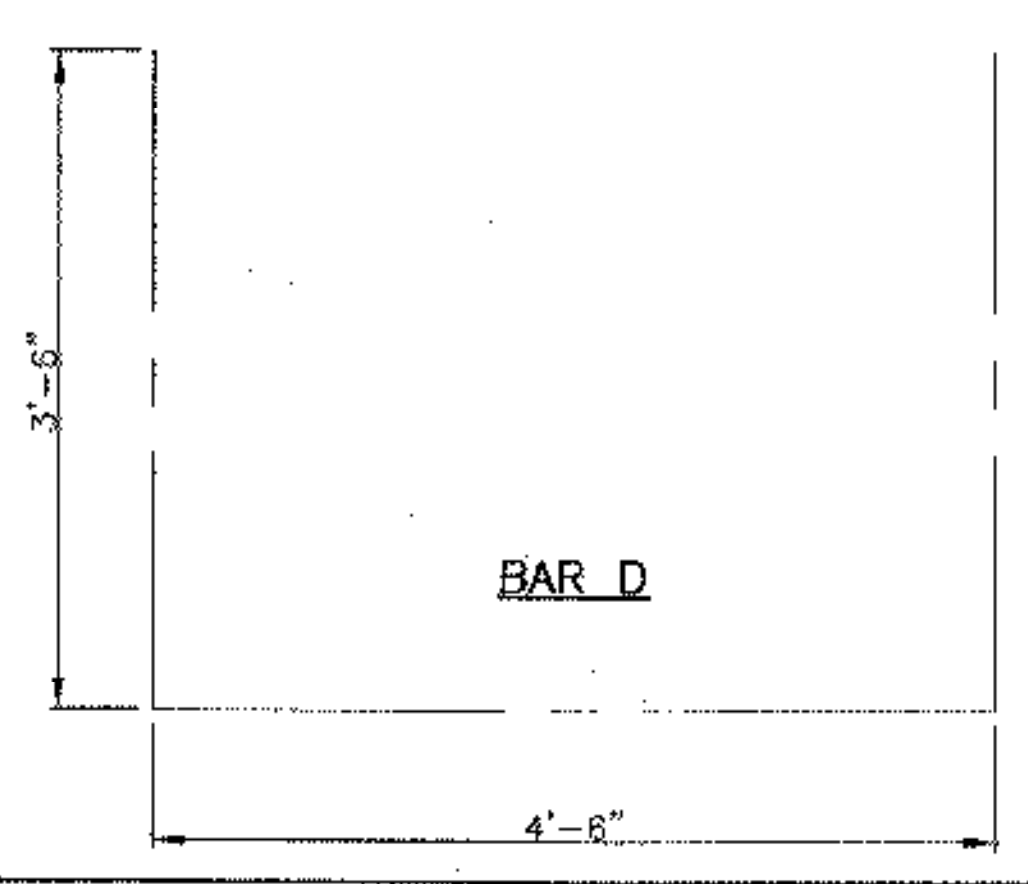


ELEVATION (SIDE)

4' AS PER ADDENDUM #2 DATED 3/21/06



ANCHOR BLOCK REINFORCING STEEL



BAR D

- NOTE:
1. REINFORCING SHOWN (TOP & BOTH ENDS) IS MINIMUM. ADDITIONAL BARS SHOWN IN SIDES AND BOTTOM ARE OPTIONAL TO FACILITATE INSTALLATION.
 2. SEE BRIFEN DRAWING WRSF FOR ANCHOR PLATE ORIENTATION, OTHER DETAILS

— BRIFEN FURNISHED
- - - - - BY OTHERS

The information herein is proprietary to BRIFEN USA, and shall not be disclosed, duplicated or used otherwise without the express written consent of BRIFEN USA, Inc.

BRIFEN★USA INC.

BAR LIST	
A	7 NO. 4 @ 15'-6"
B	24 NO. 4 @ 4'-6"
C	2 NO. 4 @ 10'-6"
D	2 NO. 4 @ 11'-6"

Revisions			END ANCHOR BLOCK (4D X 5W X 9L)		
No.	Date	By	Date	Drawn By	Scale
1.			1.10.06	Manita Workman	None
2.					
3.					
4.					
5.					

Dwg. No. ANCH-06-105a

Sheet No. 2A of 9