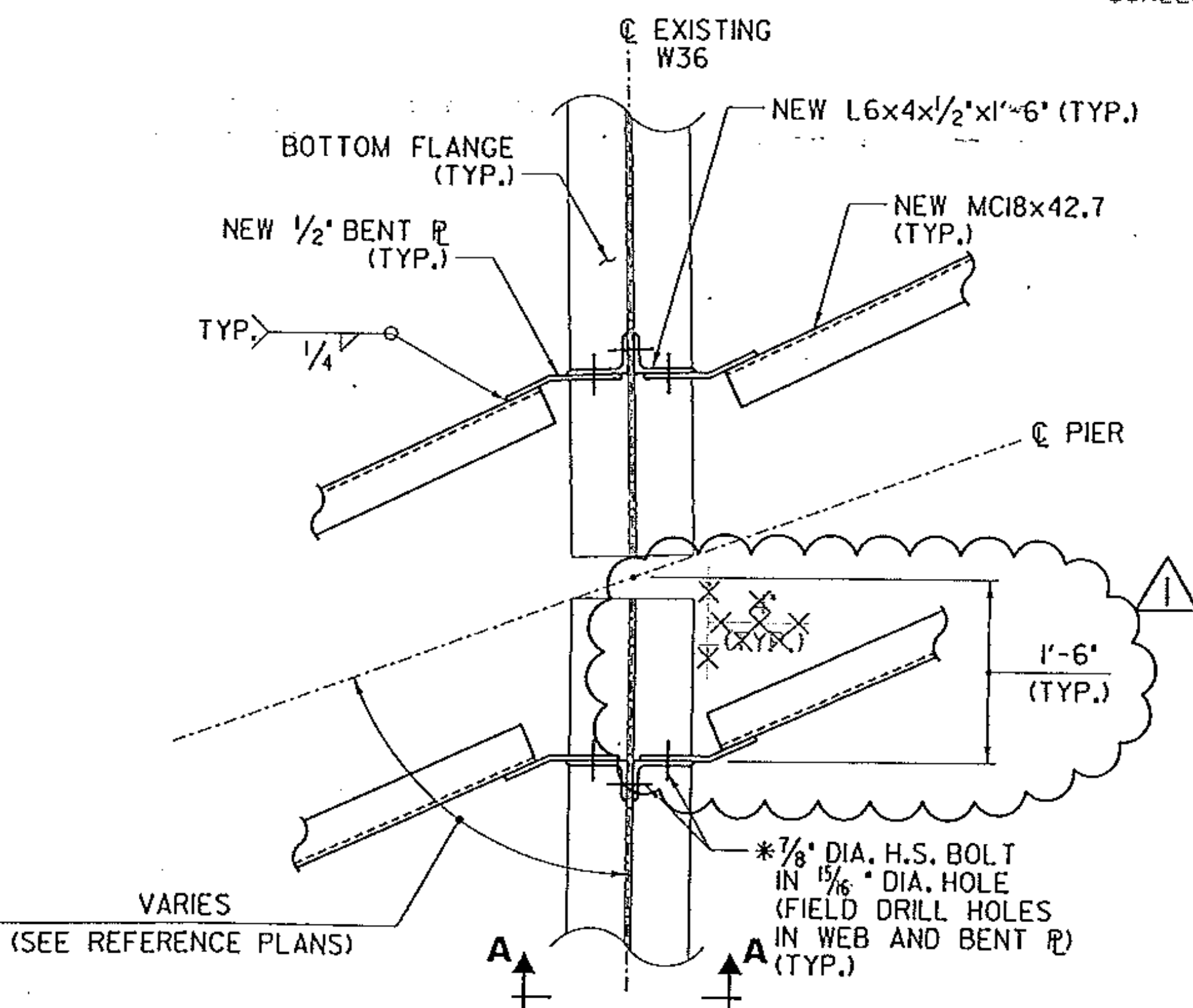


NOTE:
CONTRACTOR MAY PROPOSE ALTERNATE LENGTH FOR BARS S502 TO SUIT PROPOSED TRAFFIC CONTROL SCHEME. USE MECHANICAL CONNECTOR WITH 2'-0" MINIMUM LAP LENGTH BETWEEN PHASES.

BRIDGE 14N&S PROPOSED SECTION BETWEEN GIRDERS AT PIERS 1&2

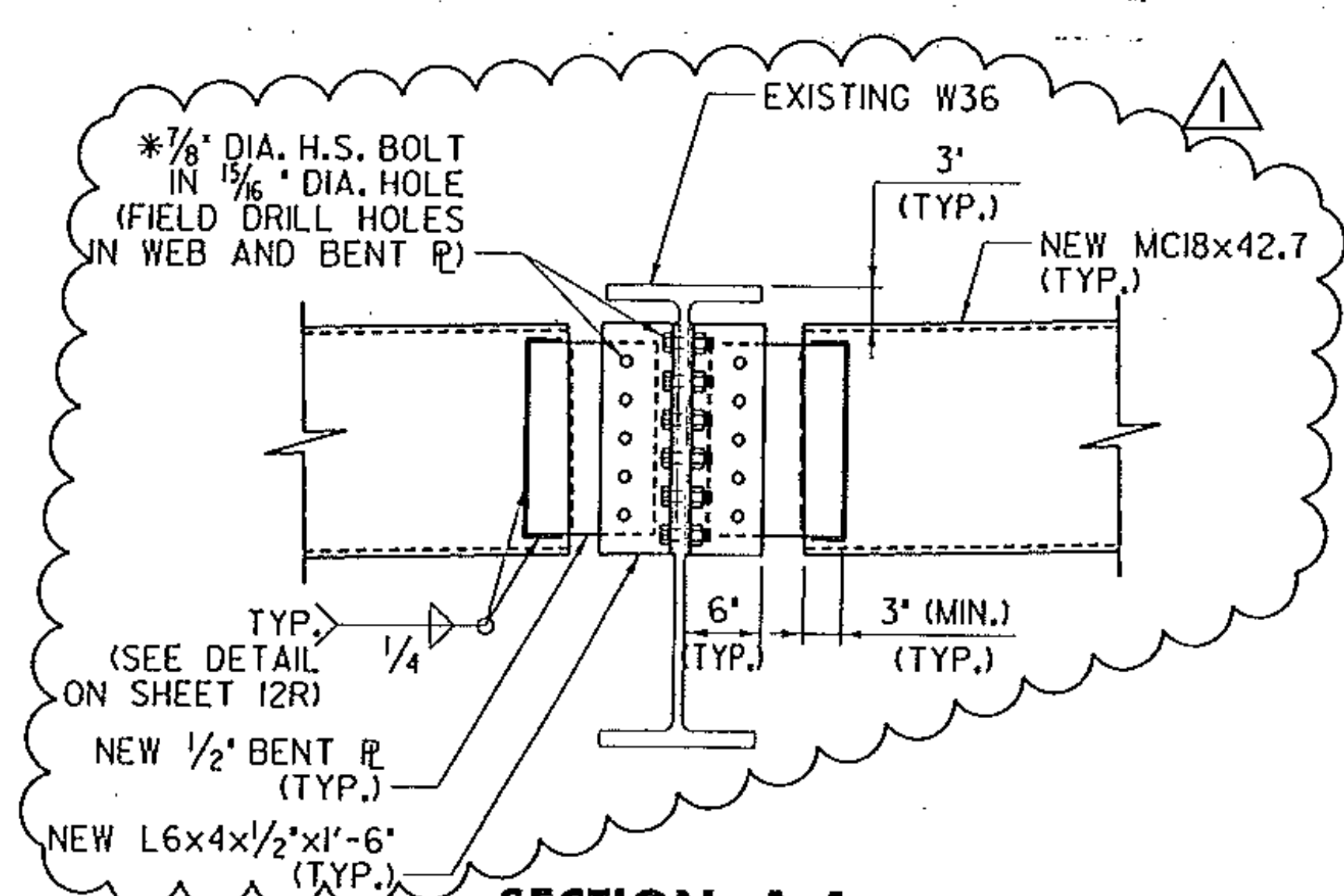
SCALE: 3" = 1'-0"



BRIDGE 14N&S PARTIAL PLAN PIER DIAPHRAGM

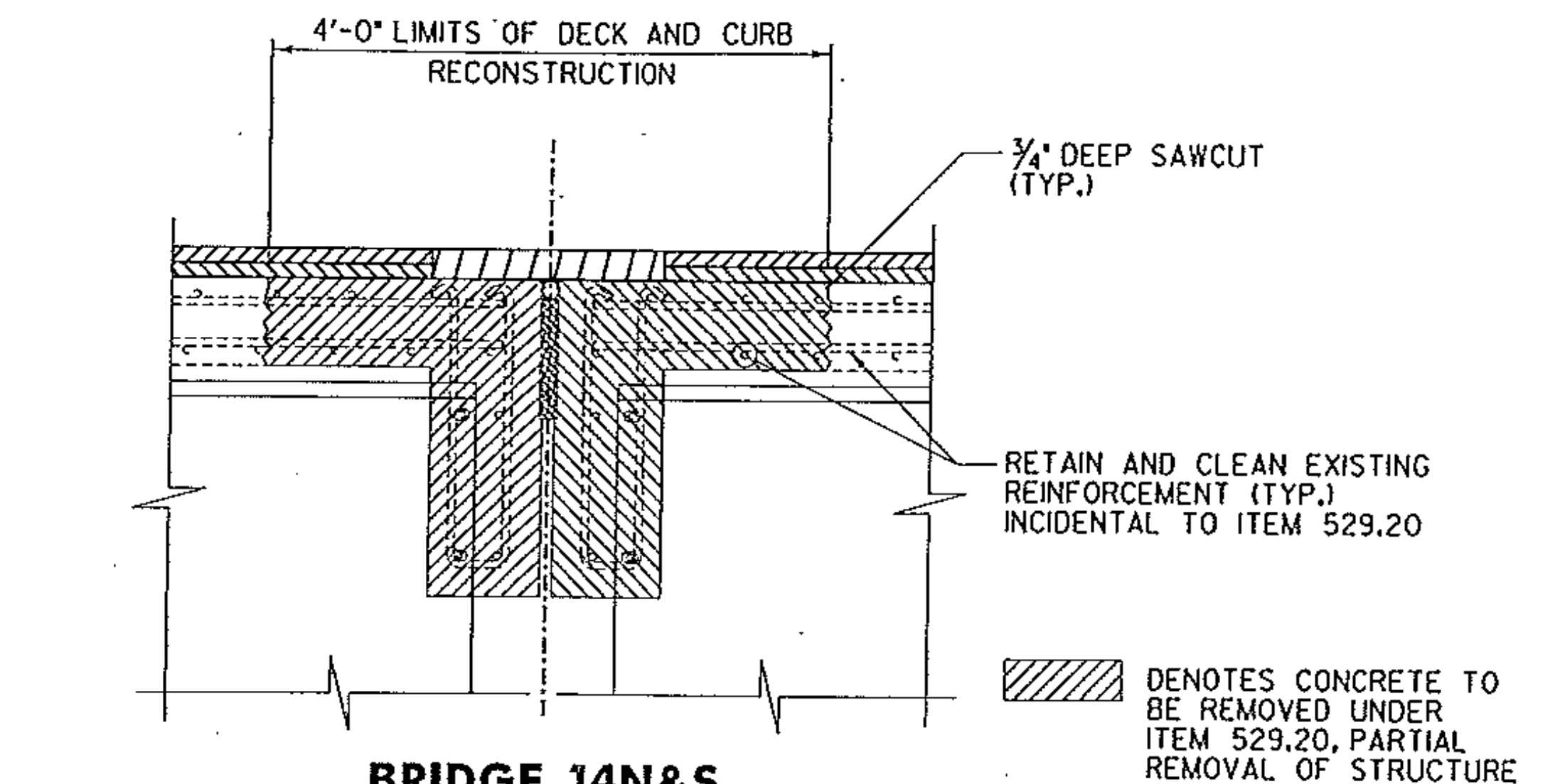
SCALE: 1" = 1'-0"

* VERIFY THAT A 2' MIN. EDGE DISTANCE IS PROVIDED BETWEEN NEW HOLES AND EXISTING HOLES IN THE BEAM WEB, NOTIFY ENGINEER IF ADEQUATE EDGE DISTANCE IS NOT PROVIDED WITH PROPOSED DIAPHRAGM CONFIGURATION.



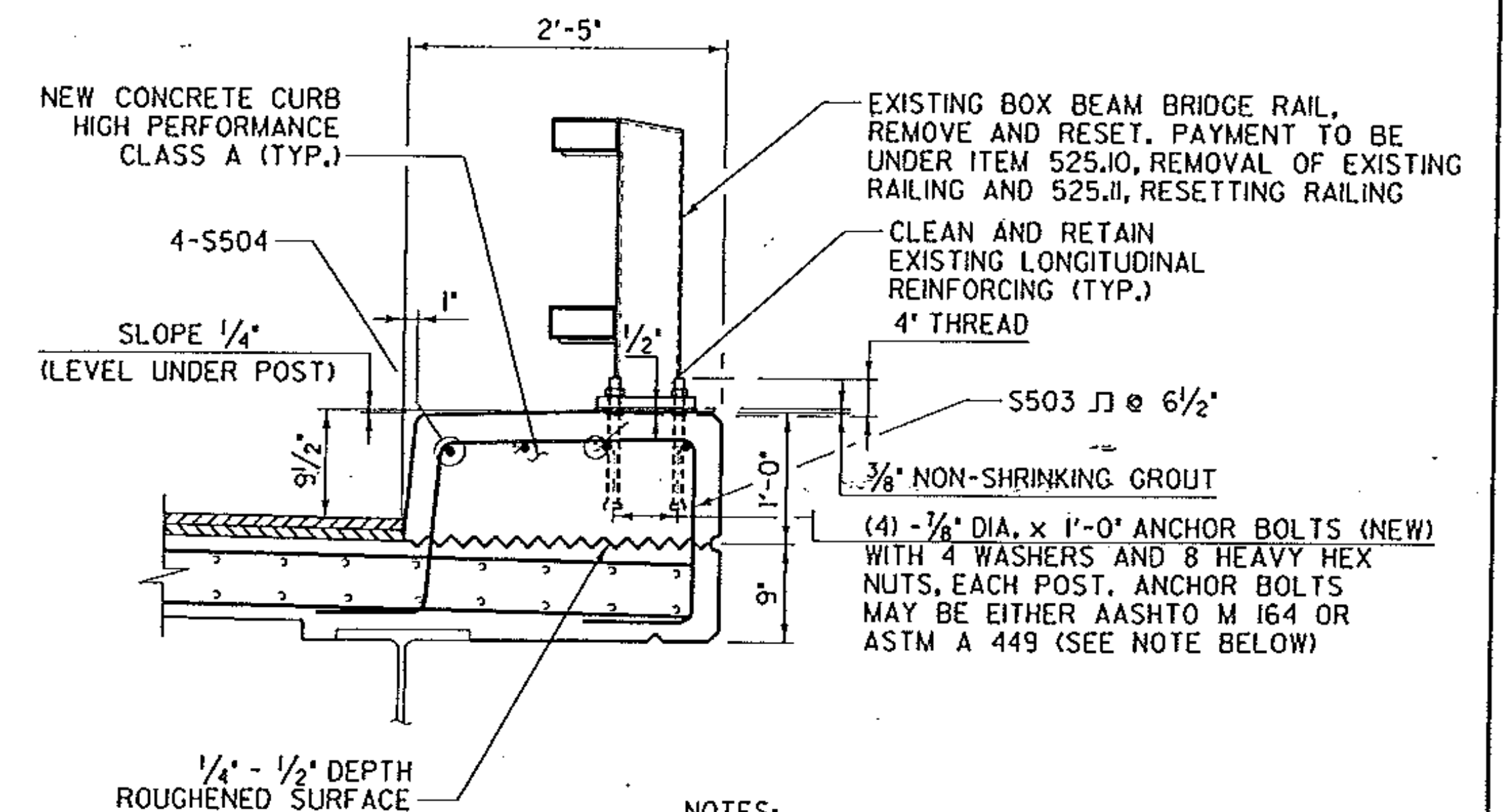
SECTION A-A

SCALE: 1" = 1'-0"



BRIDGE 14N&S PARTIAL REMOVAL SECTION AT PIERS 1&2

SCALE: 1" = 1'-0"



CURB SECTION 1.

SCALE: 1" = 1'-0"



NOTES:

- ALL POSTS SHALL BE SET TO NORMAL GRADE. NUTS PLACED IN CONCRETE ARE TO BE ROTATED WITHIN 24 HOURS AFTER CONCRETE IS PLACED TO BREAK BOND BETWEEN NUT AND CONCRETE. NUTS SHALL THEN BE USED TO ALIGN THE POSTS BOTH HORIZONTALLY AND VERTICALLY. AFTER FINAL POSITION HAS BEEN APPROVED, ALL VOIDS BETWEEN THE BASE PLATE AND CONCRETE SURFACE SHALL BE GROUTED WITH NON-SHRINK GROUT CONFORMING WITH SUBSECTION 707.03, MORTAR, TYPE IV.
- IF THE CONTRACTOR CHOOSES TO ONLY REMOVE INDIVIDUAL POSTS, THE CONTRACTOR WILL BE PAID FOR IO LF (FOR EVERY POST REMOVED AND RESET) FOR EACH ITEM 525.I0, REMOVAL OF EXISTING RAILING AND ITEM 525.II, RESETTING RAILING. PAYMENT FOR NEW BRIDGE RAIL ANCHOR BOLTS WILL BE INCIDENTAL TO ITEM 525.II, RESETTING RAILING.

REVISION	DATE	DESCRIPTION
1	02/01/11	LOCATION OF PROPOSED DIAPHRAGM RELOCATED AWAY FROM EXISTING CONCRETE DIAPHRAGM IN ORDER TO FACILITATE INSTALLATION.



PROJECT NAME: PUTNEY	PROJECT NUMBER: IM 091-K(60)
FILE NAME: ...z05o288br14deckdla_REV.dgn	PLOT DATE: 2/4/2011
PROJECT LEADER: G. BOGUE	DRAWN BY: J. SOTER
DESIGNED BY: G. BOGUE	CHECKED BY: T. KNIGHT
BR 14 N&S DECK & DIAPHRAGM DETAILS	SHEET 11R OF 45