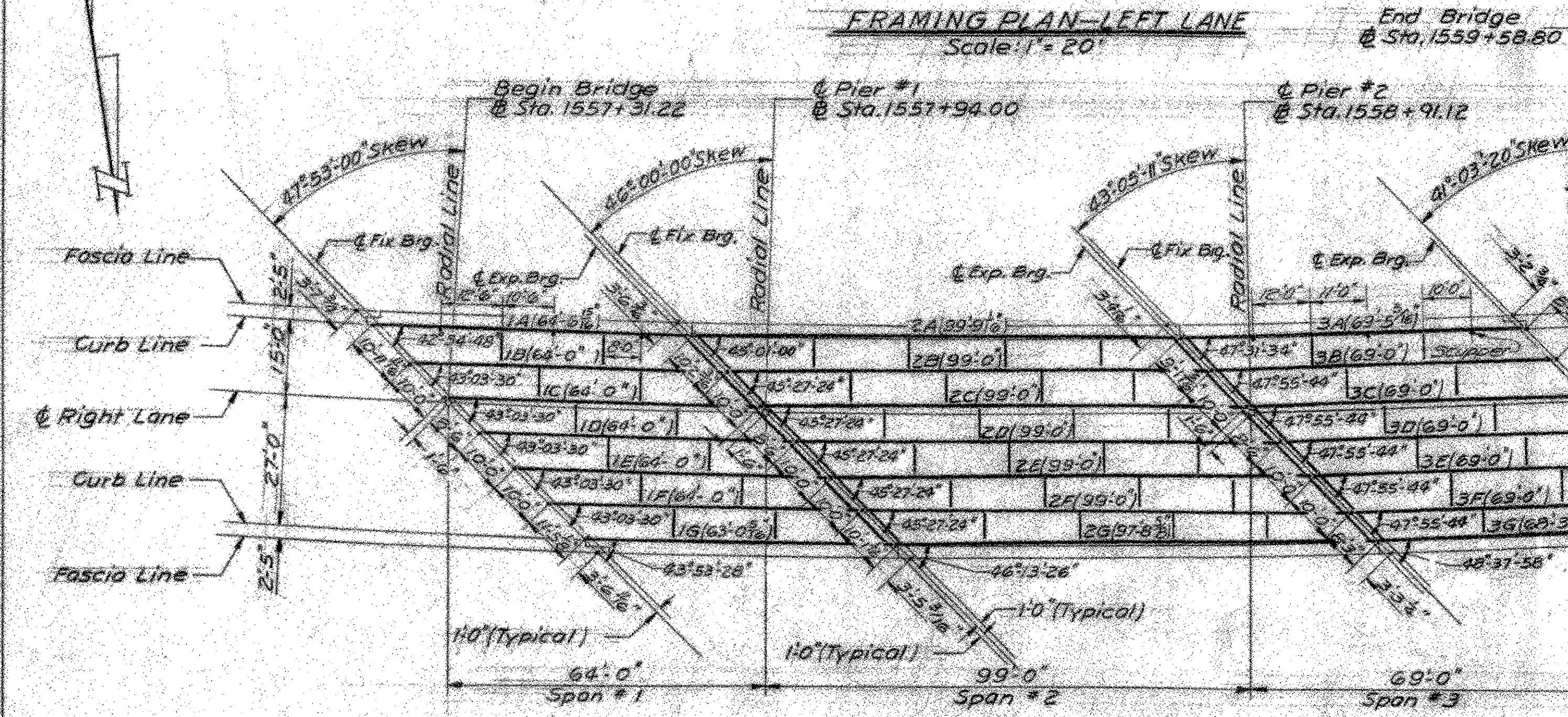
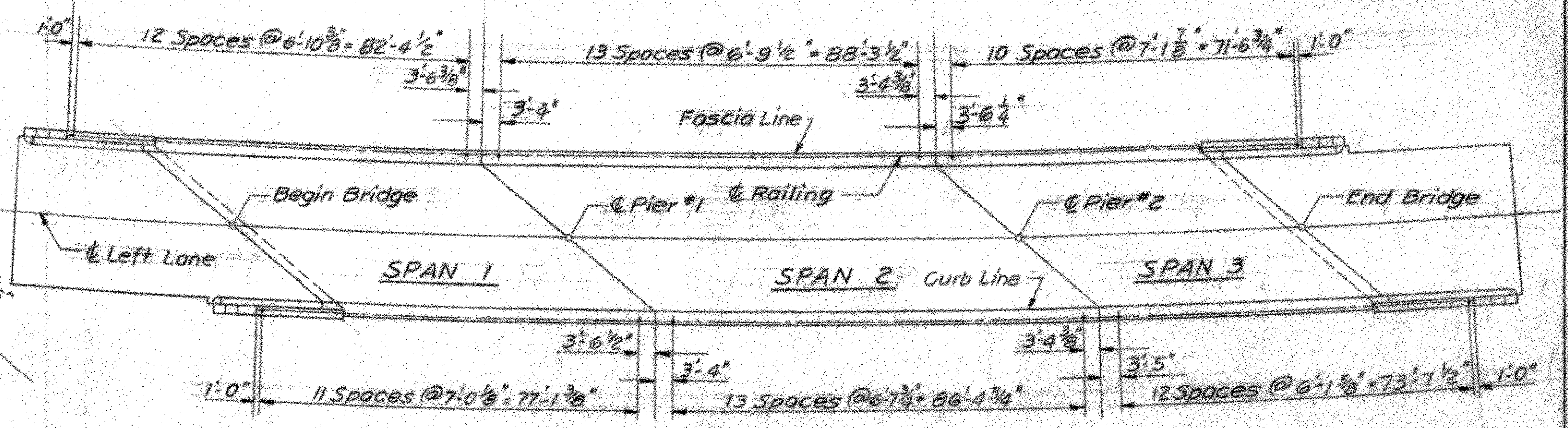


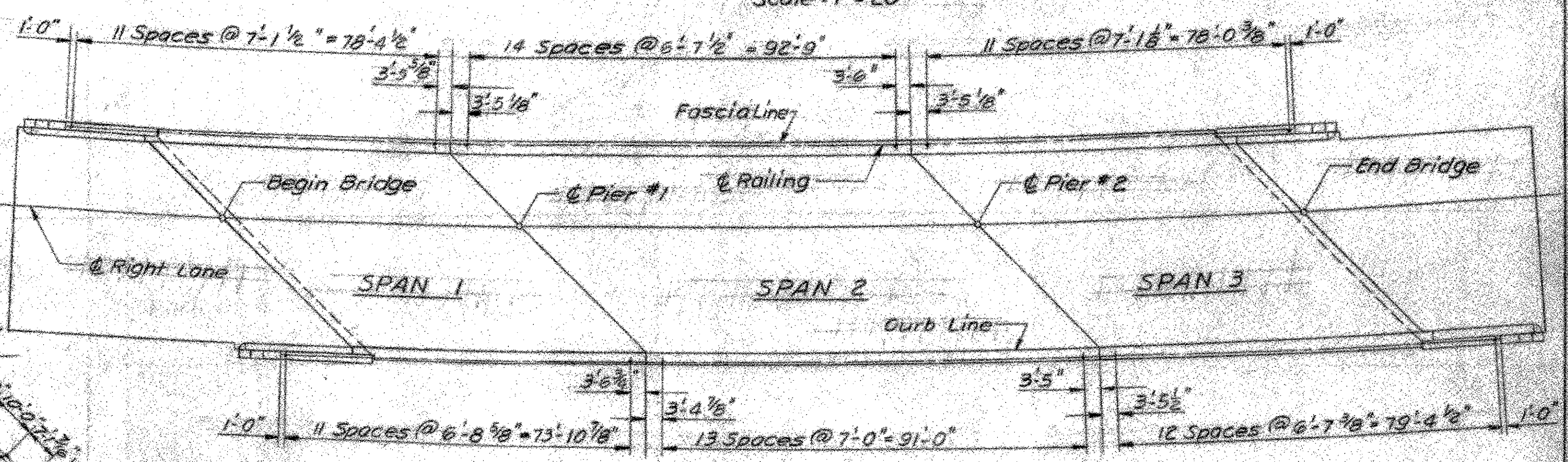
FRAMING PLAN-LEFT LANE
Scale: 1" = 20'



FRAMING PLAN-RIGHT LANE
Scale: 1" = 20'



RAILING PLAN-LEFT LANE
Scale: 1" = 20'

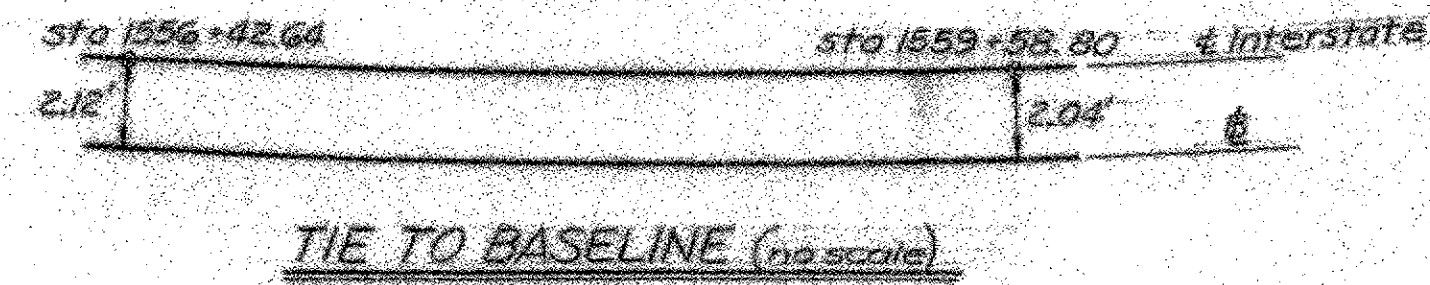


RAILING PLAN-RIGHT LANE
Scale: 1" = 20'

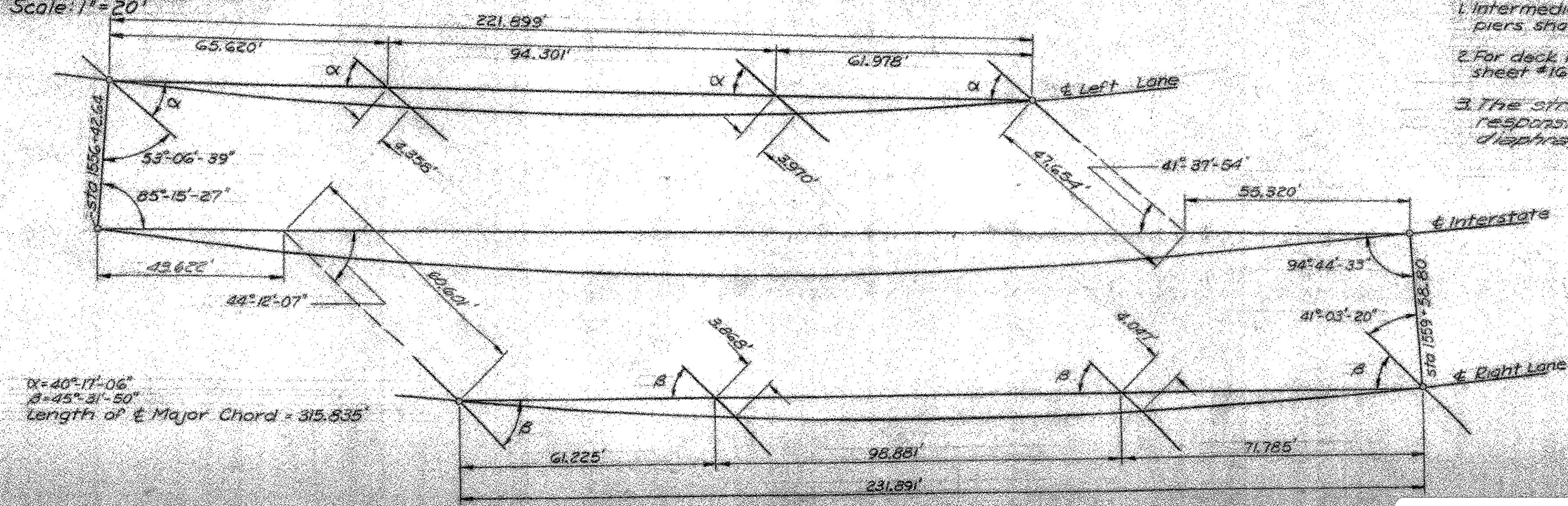
Note:
See Standard Sheets
SCB-30-60, SCB-42-60, SCB-D-60,
SB-20-60, SB-56-60

NOTES:

1. Intermediate diaphragms and end diaphragms at piers shall be 16' x 42\"/>
- 2. For deck reinforcing bar schedule see bridge sheet #16 & #17
- 3. The structural steel fabricator shall be responsible for the location and length of steel diaphragms



TIE TO BASELINE (No scale)



LAYOUT FROM MAJOR CHORD (No scale)

VERMONT
STATE HIGHWAY DEPARTMENT
TOWNS OF BOLTON-RICHMOND
INTERSTATE ROUTE 89
INTERSTATE BRIDGE OVER US-2
RICHMOND INTERCHANGE
FRAMING PLANS &
RAILING PLANS
M'FARLAND-JOHNSON
CONSULTING ENGINEERS
BINGHAMTON, NEW YORK
DESIGNED: L.S. CHECKED: J.A.S. DATE: 7-23-61
DRAWN: H.H.T. IN CHARGE: H.O.G. SCALE: 1" = 20'
PROJECT NO. I 89-2 (8) SH 113 OF 24
CONTRACT NO. 4 BRIDGE SHEET 11 OF 18

RICHMOND
IM 089-2(38) - BR 56 N&S
This sheet for information only.
Sheet 34 of 43