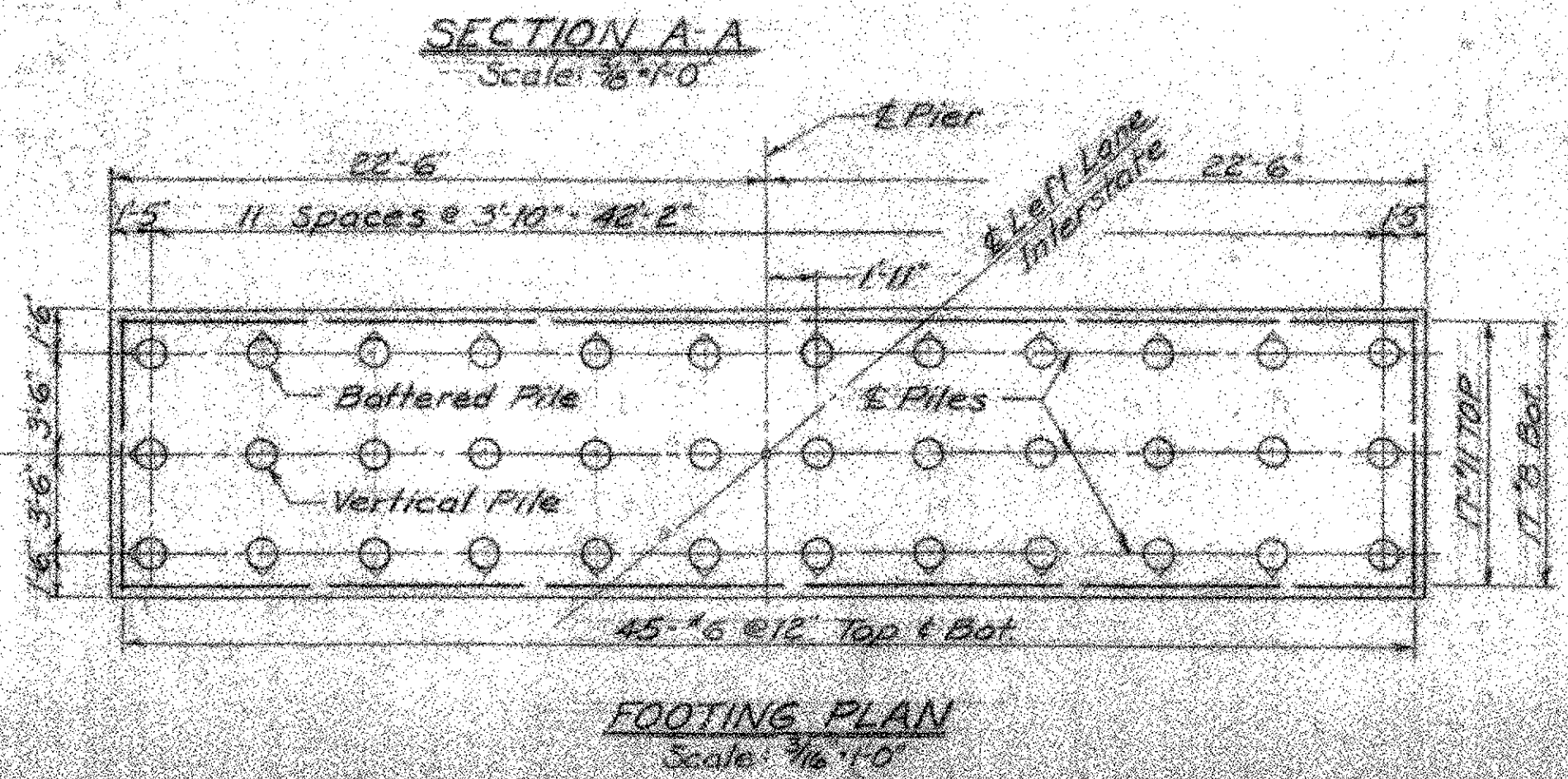
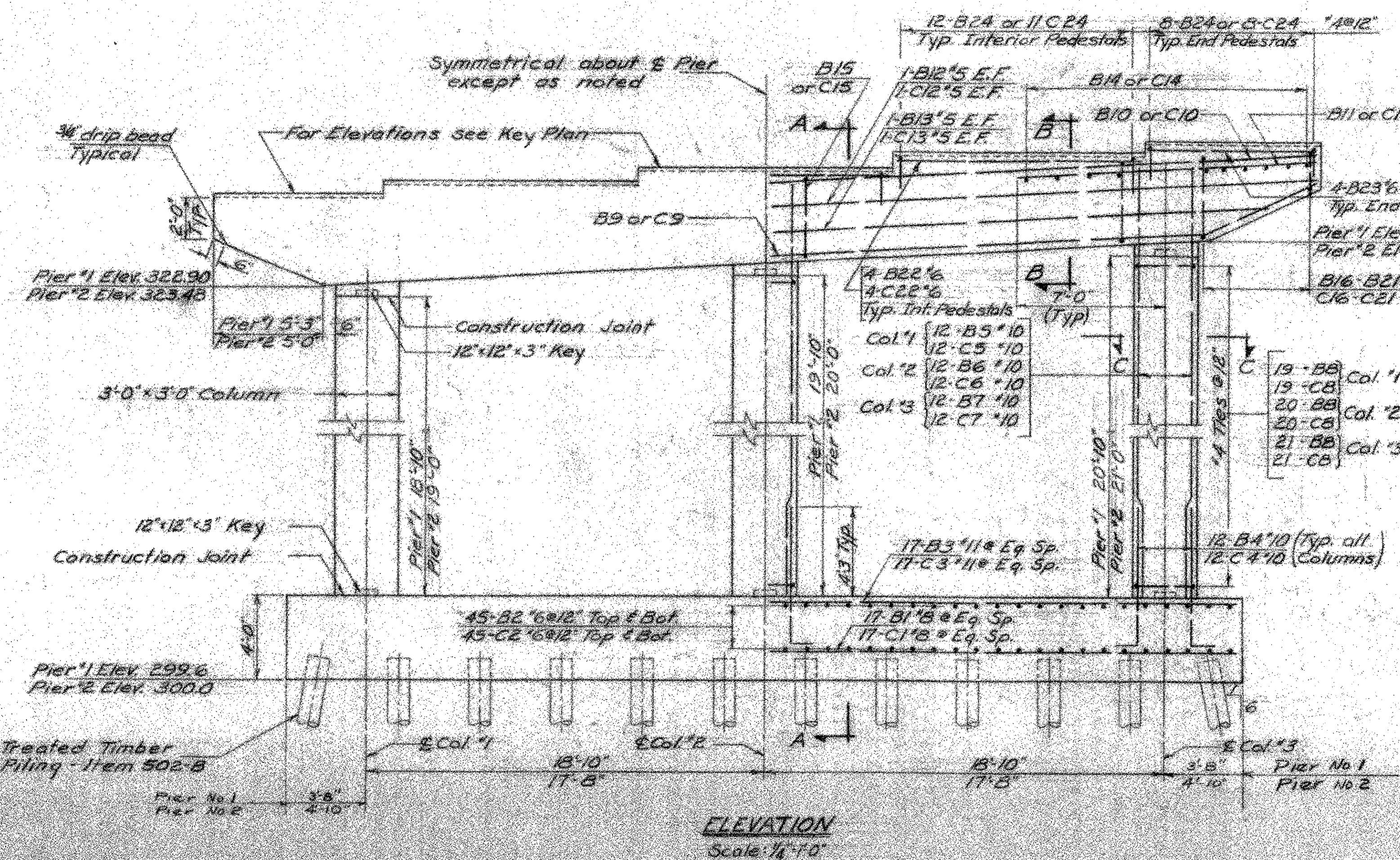
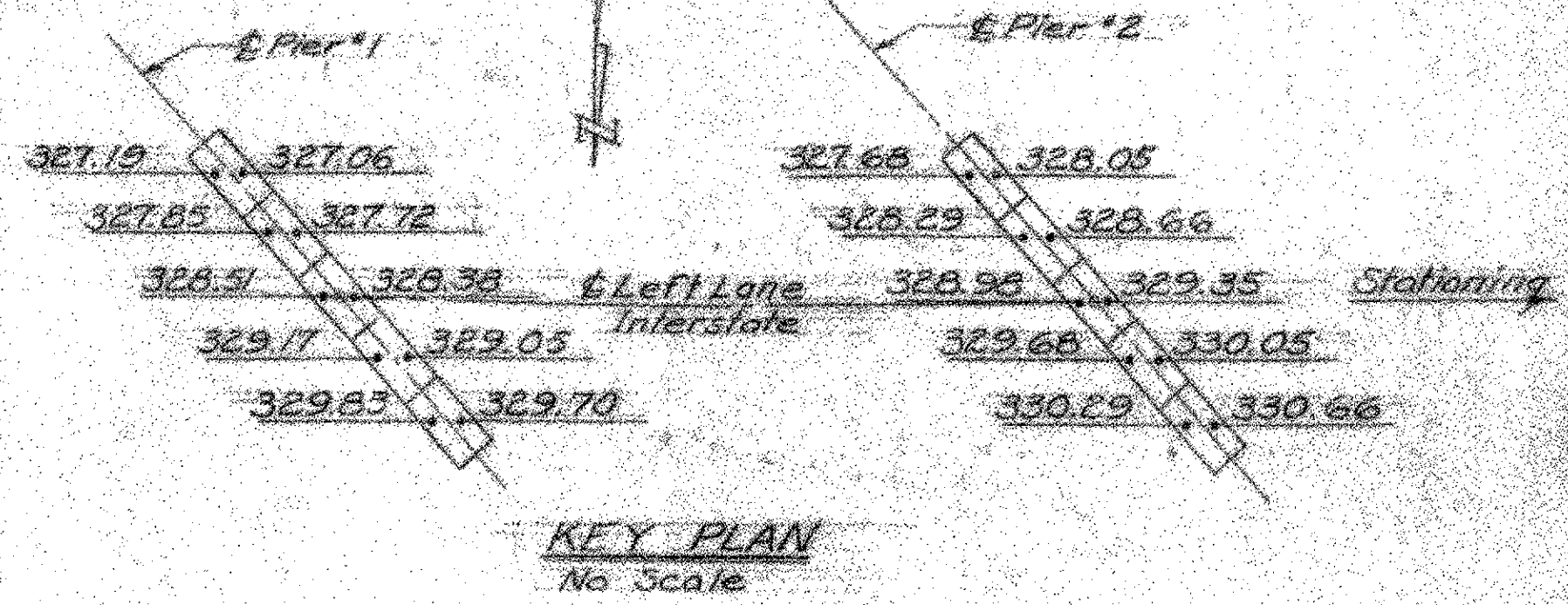
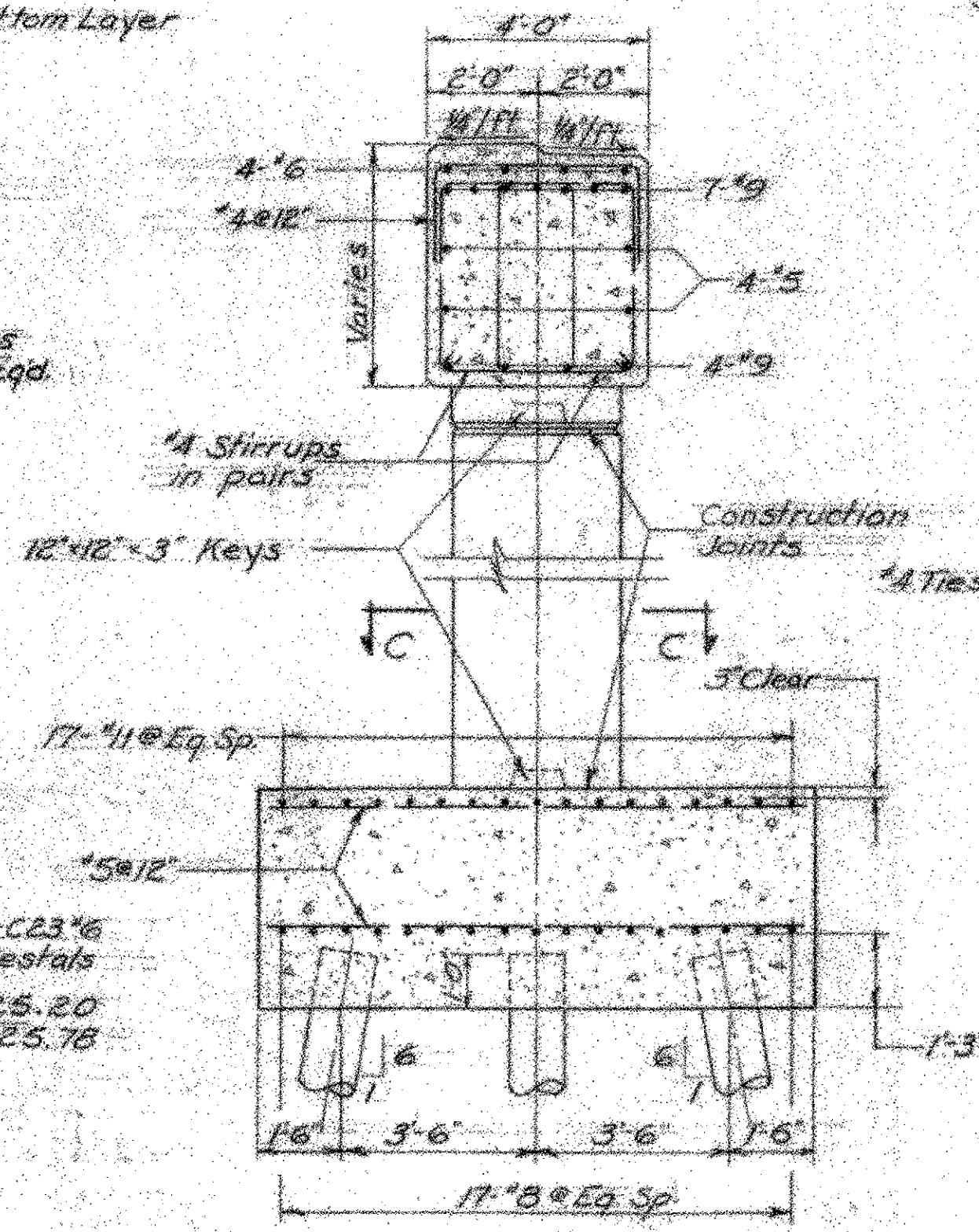
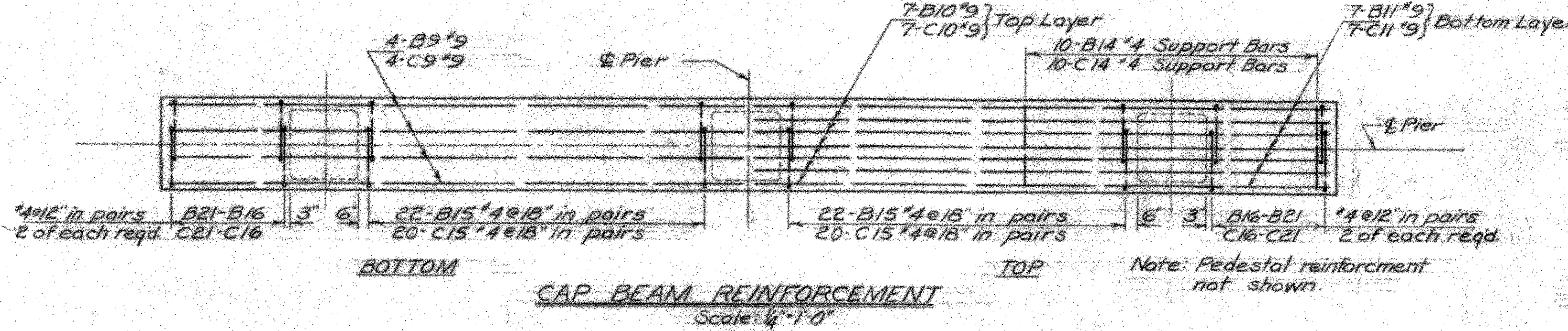


ESTIMATED QUANTITIES				
ITEM NO	ITEM	PIER NO	TOTAL	FINAL
107	Structure Excavation (cubic yards)	1	134	141
		2	44	32
401 B	Concrete Class B, Mod. (cubic yards)	1	119.7	117
		2	119.7	117
407	Asphaltic-Asbestos Coating (square yards)	1	22	21
		2	22	21
502 B	Treated Timber Piling (linear feet)	1	1000	1170
		2	1000	1000



- NOTES**
1. For General Notes see bridge sheet 2.
  2. For beam angles see Framing Plan, bridge sheet 11.
  3. Bridge seats to be sloped 1/8" per foot and coated with Asphaltic-Asbestos Coating Item 407, (1/2" thick) after super structure is in place.
  4. For design purposes the maximum pile load does not exceed 20 tons.
  5. For reinforcing bar schedule see bridge sheet 16.
  6. Pier #1 reinforcing bar marks begin with letter 'B'. Pier #2 reinforcing bar marks begin with letter 'C'.
  7. Estimated pile length - 30'

VERMONT  
STATE HIGHWAY DEPARTMENT  
TOWNS OF BOLTON - RICHMOND  
INTERSTATE ROUTE 89  
INTERSTATE BRIDGE OVER US-2  
RICHMOND INTERCHANGE  
PIERS  
LEFT LANE

M. FARLAND - JOHNSON  
CONSULTING ENGINEERS  
BINCHAMTON, NEW YORK

DESIGNED H.E.C. CHECKED J.M.S. DATE 7-22-21  
DRAWN D.A.S. IN CHARGE M.G.C. SCALE AS SHOWN

PROJECT NO. I 89-218) SH (OF 2) 21  
CONTRACT NO. 4 BRIDGE SHEET 9 OF 18

RICHMOND  
IM 089-2(38) - BR 56 N&S  
This sheet for information only.  
Sheet 32 of 43