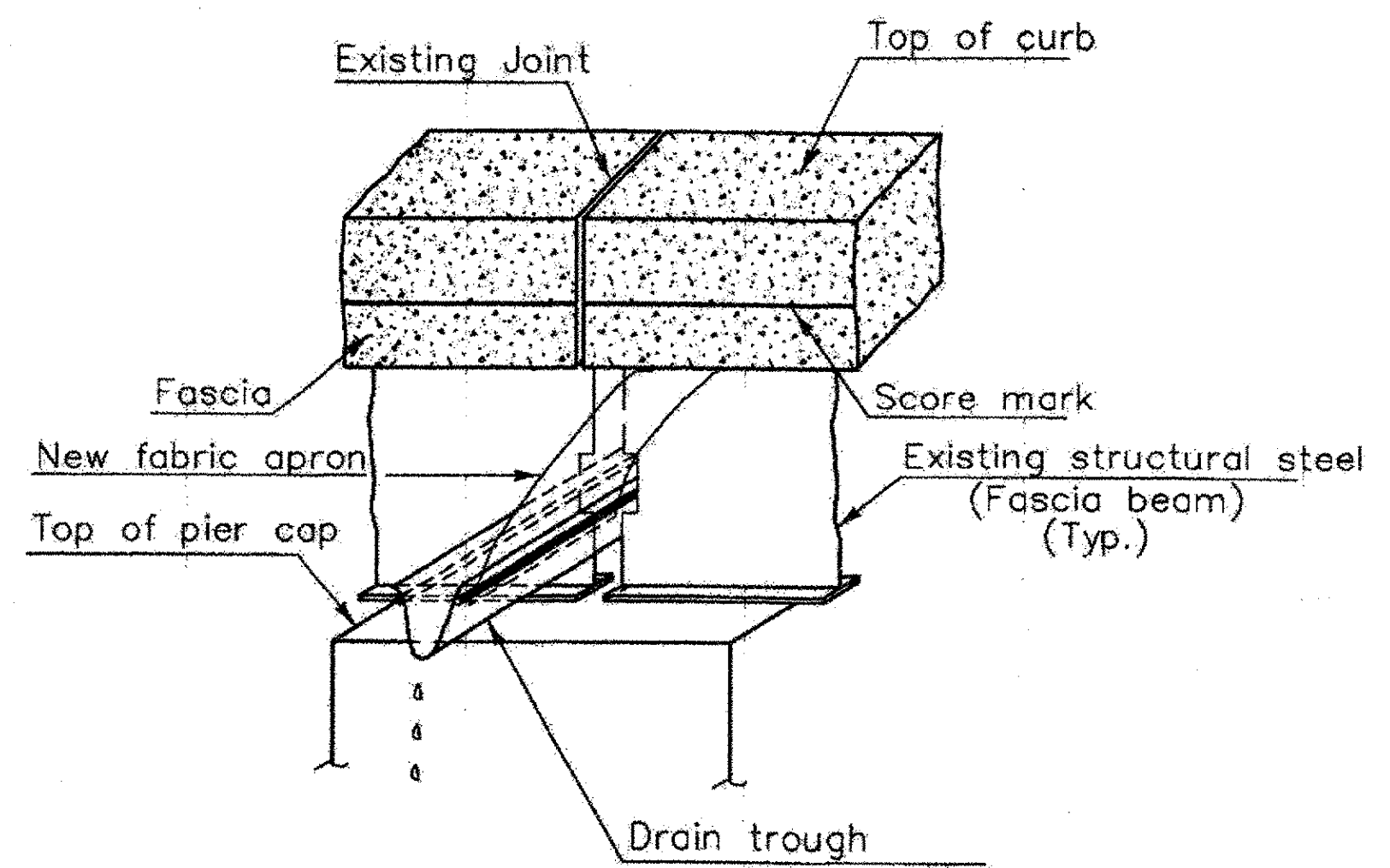
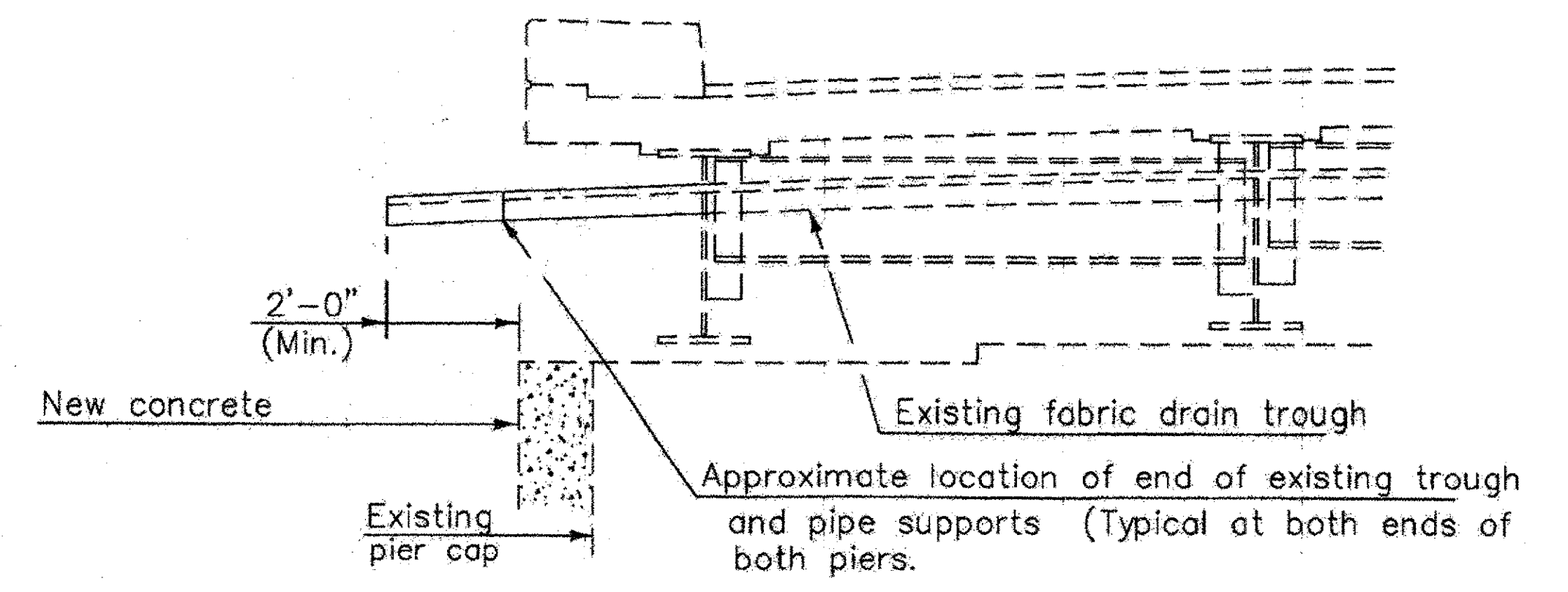


3/8" lag bolts with expansion anchorage shall be used to secure bar and apron to the bottom of the deck. Other methods of anchorage may be used with approval of the Resident Engineer.

TYPICAL PARTIAL PLAN VIEW AT PIER
N.T.S.



VIEW A-A
N.T.S.

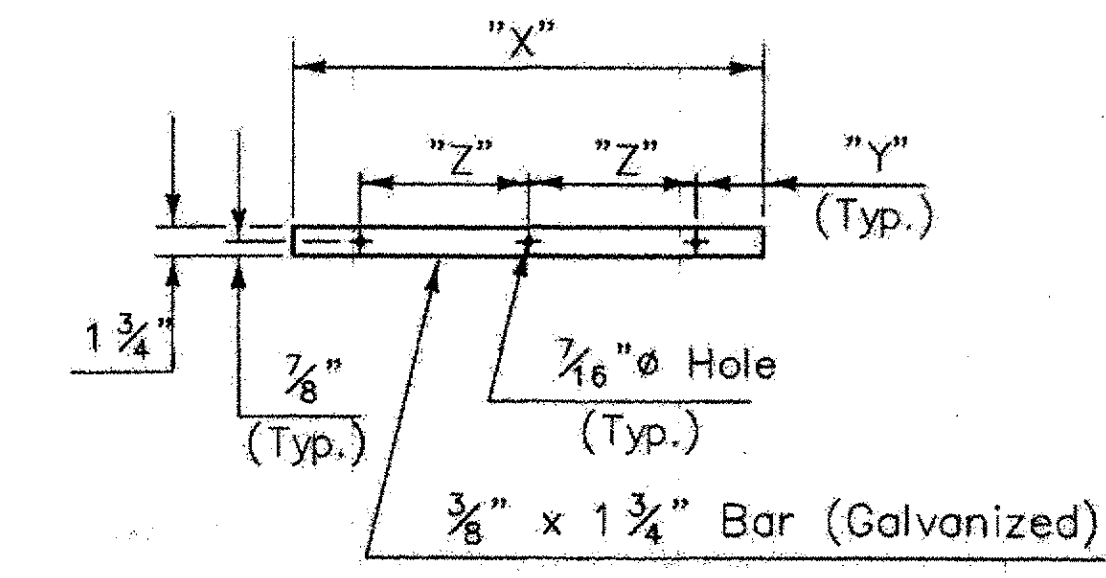


DETAILS FOR EXTENDING DRAIN TROUGH AND SUPPORT PIPES
N.T.S.

The cost of the 3/8" bar, adhesive and anchorage bolts shall be subsidiary to the Item 506.80, Drain Trough

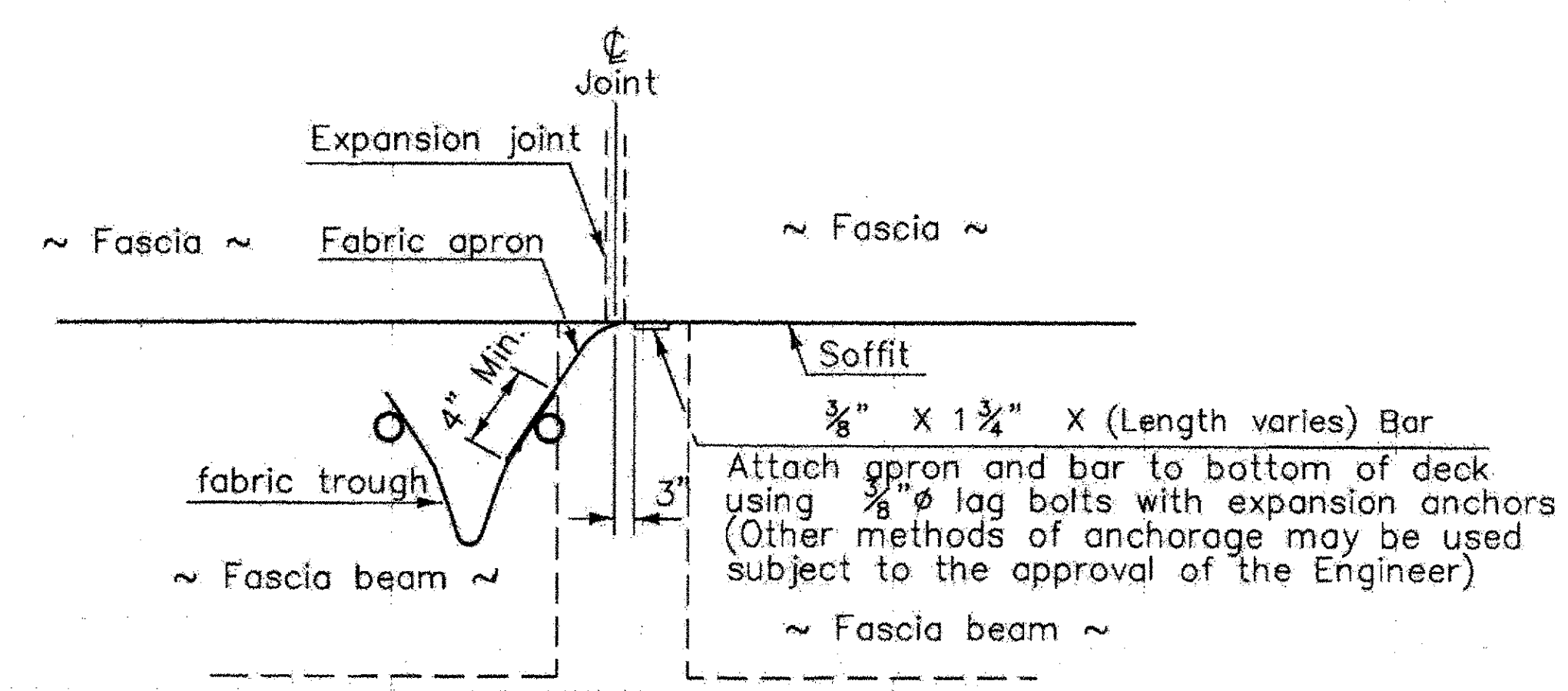
	"X"	"Y"	"Z"	NO. OF HOLES REQ'D	NO. OF BARS REQ'D
PIER 1	2'-6"	3"	8"	4	2
PIER 2	2'-6"	3"	8"	4	2
PIER 3	2'-4"	3 1/2"	7"	4	2
PIER 4	2'-2"	4"	9"	3	2

The Contractor shall field verify that the "X" dimension is correct prior to fabricating the bars

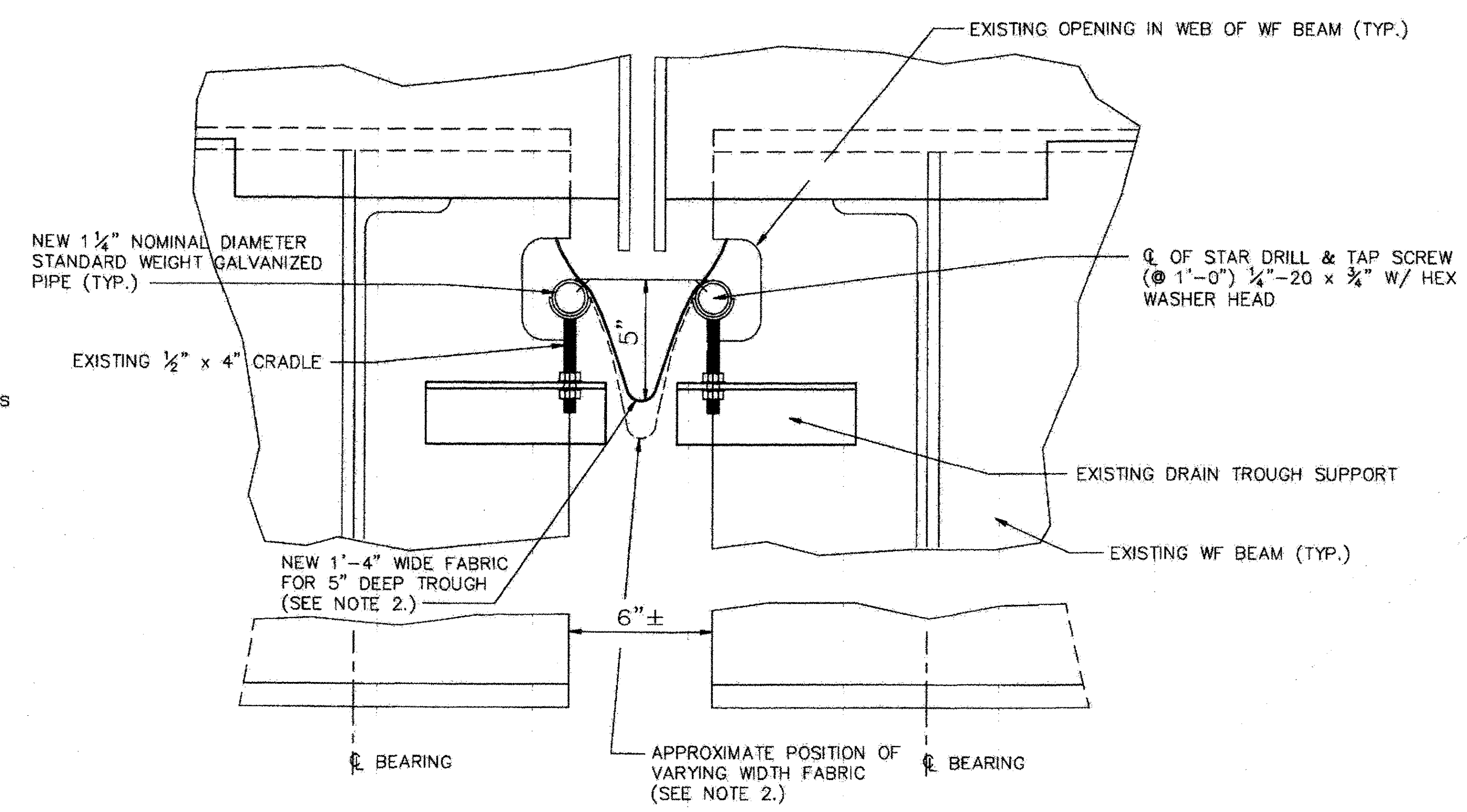


BAR DETAILS
SCALE: 1' = 1'-0"

- NOTES:
1. THE CONTRACTOR SHOULD BID ON THE COMPLETE REMOVAL AND TOTAL REPLACEMENT OF THE ENTIRE EXISTING DRAIN TROUGHS AND ALL RELATED HARDWARE AND COMPONENTS. THE ENGINEER WILL ONLY EVALUATE THE EXISTING CONDITIONS OF THE DRAIN TROUGH SUPPORTS ATTACHED TO THE BEAMS INCLUDING THE 1/2" X 4" CRADLES FOR POSSIBLE REUSE.
 2. FABRIC USED IN THE CONSTRUCTION OF THE DRAIN TROUGHS SHALL BE A THREE PLY PERFORMED FABRIC MATERIAL AS SPECIFIED IN SECTION 707.07. IT WILL BE ONE CONTINUOUS STRIP. THE APPROXIMATE WIDTH FOR A 5" DEEP TROUGH IS ABOUT 16". HOWEVER A VARYING WIDTH MAY BE REQUIRED TO MAINTAIN A MINIMUM FLOW LINE GRADE OF 1/2" PER FOOT. A STEEPER GRADE IS DESIRABLE. THE ENGINEER WILL DETERMINE THE GRADE FOR EACH TROUGH BASED ON FIELD CONDITIONS.
 3. 1/4" (NOMINAL DIAMETER) STANDARD WEIGHT GALVANIZED PIPE SHALL BE CONTINUOUS FOR THE ENTIRE LENGTH OF TROUGH. ALL COSTS FOR THE PIPE AND COUPLINGS, SUPPORTS, CRADLES, SCREWS AND RELATED HARDWARE SHALL BE INCLUDED IN THE UNIT BID PRICE FOR FABRIC DRAIN TROUGH.
 4. THE ENGINEER WILL DETERMINE THE CROSS SLOPE OF EACH DRAIN AND REQUIRED TOTAL LENGTH OF EACH NEW DRAIN TROUGH LOCATION PRIOR TO REMOVAL OF THE EXISTING TROUGH.



ELEVATION VIEW OF APRON AT FASCIA
N.T.S.



DRAIN TROUGH REPLACEMENT DETAIL
N.T.S.

STATE OF VERMONT AGENCY OF TRANSPORTATION	
Town Of RICHMOND	Bridge No. 56 N&S
Highway No. U.S.2	Log Sta. -
I-89 OVER U.S.ROUTE 2 AT EXIT II	
DRAIN TROUGH REPLACEMENT	
Designed By/TRANS	Drawn By/TRANS
Checked By G.SPILAK Date 02/06	Bridge Design Supervisor S.FARNSWORTH Date 02/06
PROJECT RICHMOND	PROJECT NO. 1M 089-2(38)
I.G.C. Info.	
Bridge Sheet No.	Sheet 13 of 43