

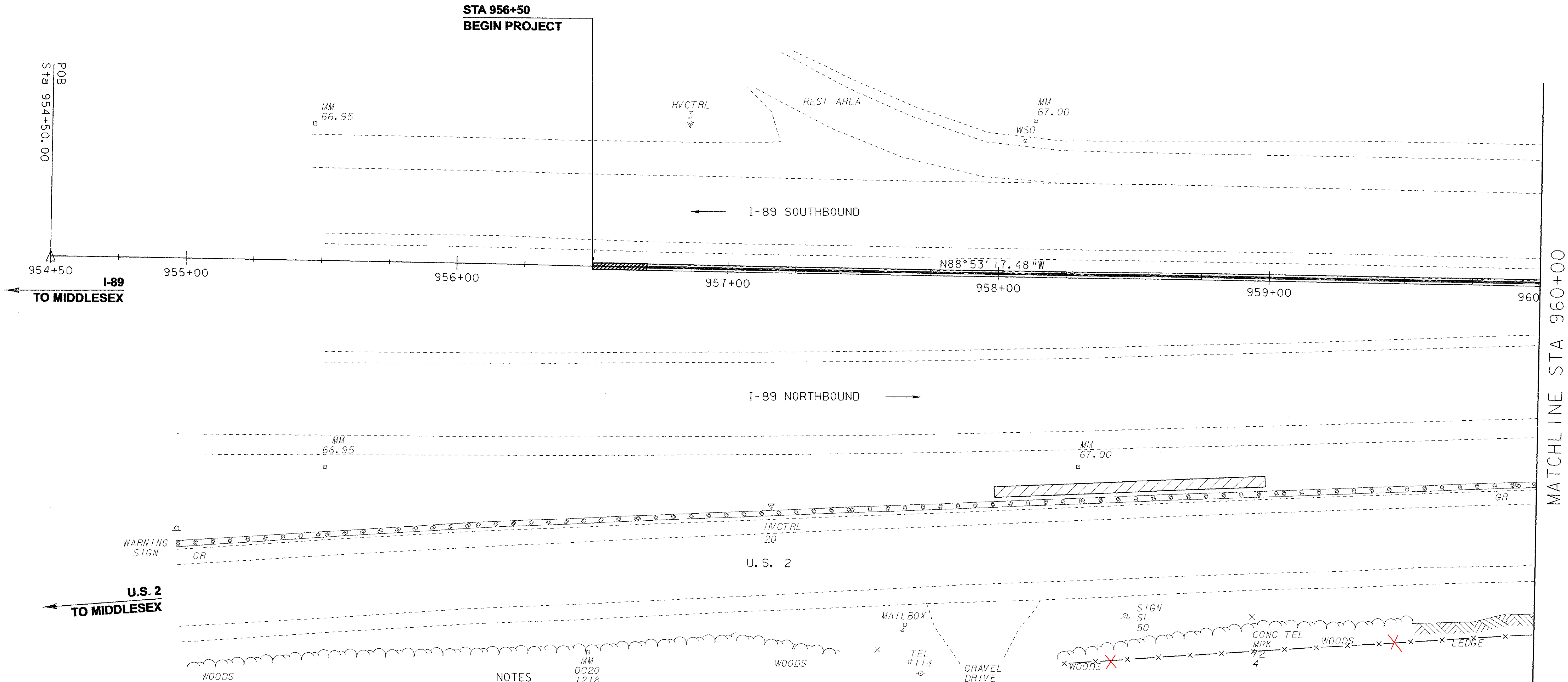
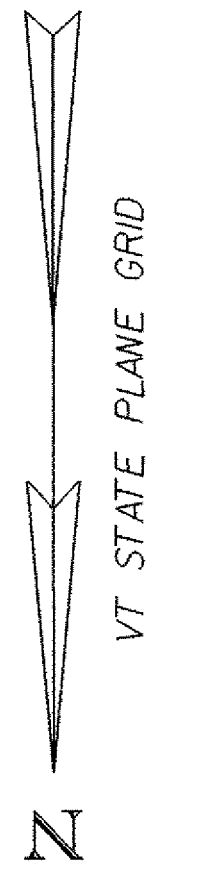
CONCRETE MEDIAN BARRIER (MOD - CAST IN PLACE)
956+70 - 960+00 CL

REMOVAL AND DISPOSAL OF GUARDRAIL (MOD - CONCRETE MEDIAN BARRIER)
956+50 - 960+00 CL

CHAIN-LINK FENCE (6')
958+27, 143.0' RT - 960+00, 130.0' RT
959+27 149.0'

ENERGY ABSORPTION ATTENUATOR - QUADGUARD
956+50 CL

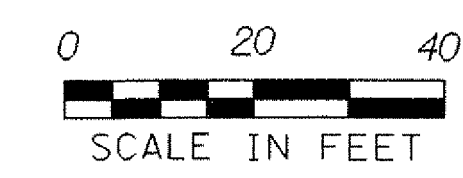
LANDSCAPING BED
958+00 - 959+00 RT



NOTES

1. ALL EXISTING STORM DRAINAGE PIPES AND STRUCTURES ARE SHOWN BASED ON PREVIOUS DESIGN PLANS. NO AS-BUILT INFORMATION WAS AVAILABLE, AND NO SURVEY WAS POSSIBLE DUE TO THEIR LOCATIONS UNDER THE EXISTING CONCRETE MEDIAN BARRIER.
2. FOR DETAILS OF LANDSCAPING BEDS, PLANT LISTS AND PLANTING DETAILS, SEE LANDSCAPING DETAIL SHEETS. BEDS ARE DESIGNED AS A 100' TYPICAL PATTERN WHICH WILL BE REPEATED FOR LONGER BEDS.
3. CONCRETE MEDIAN BARRIER AND DRAINAGE WORK SHALL BE CONSTRUCTED DURING THE FIRST CONSTRUCTION SEASON. CHAIN LINK FENCE, REHABING DI'S, AND LANDSCAPING SHALL BE CONSTRUCTED DURING THE SECOND CONSTRUCTION SEASON.

LEGEND	
CULVERT LINING	
LANDSCAPING BED	
CONCRETE MEDIAN BARRIER	
DROP INLET	
CATCH BASIN	



STA 954+50 - STA 960+00	
PROJECT NAME:	WATERBURY - BOLTON
PROJECT NUMBER:	IM 089 - 2(37)
FILE NAME:	d05a110bdr.dgn
PROJECT LEADER:	A.J. BOMBARDIER
DESIGNED BY:	J.L. SCHULTZ
CHECKED BY:	
LAYOUT SHEET 1	
PLOT DATE:	07-APR-2006
DRAWN BY:	J.L. SCHULTZ
CHECKED BY:	
SHEET	9 OF 80

CONCRETE MEDIAN BARRIER (MOD - CAST IN PLACE)
960+00 - 965+50 CL

REMOVE EXISTING DROP INLET
961+61 RT

LANDSCAPING BED
962+00 - 964+95 RT

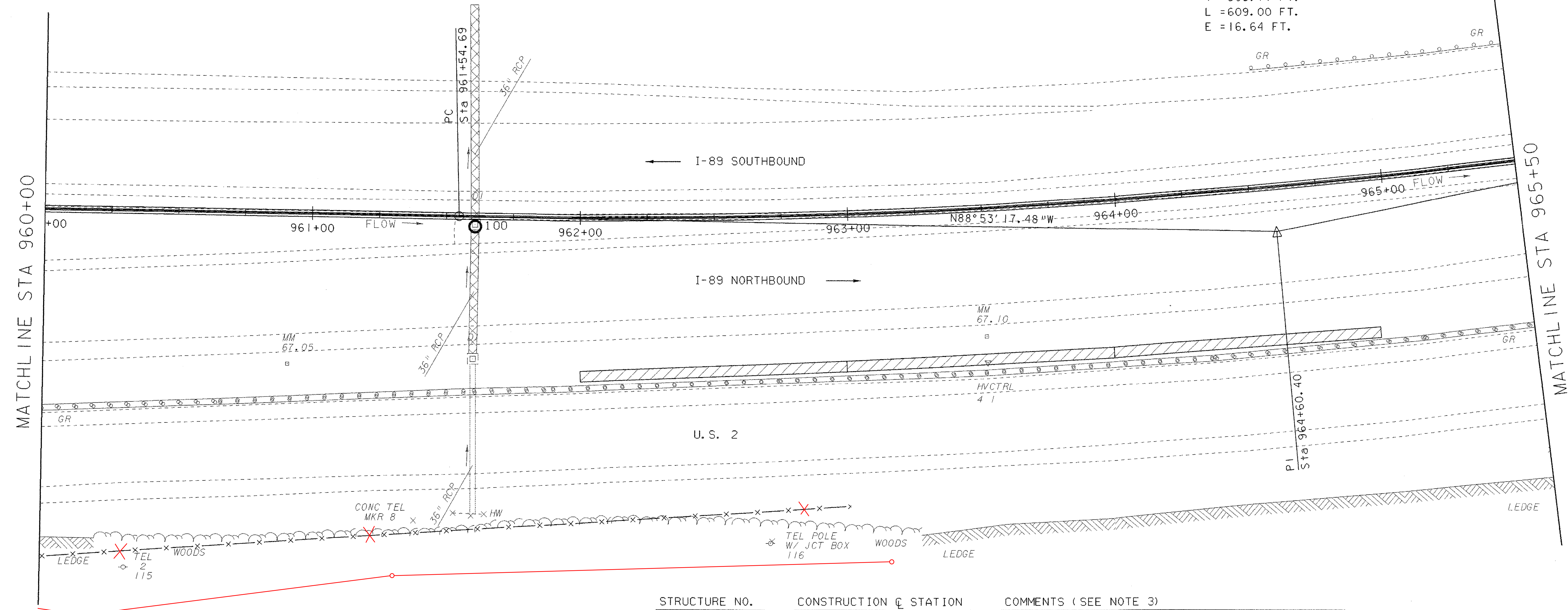
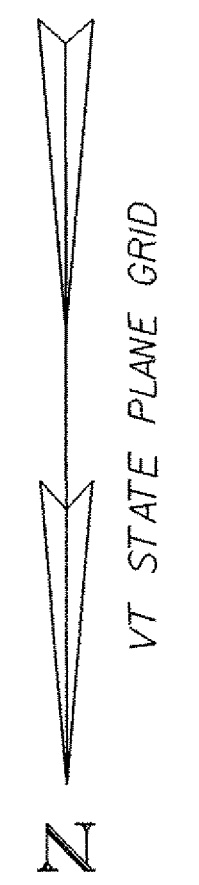
REHABING DI, CB, OR MH CLASS I
961+61, 53' RT

REMOVAL AND DISPOSAL OF GUARDRAIL (MOD - CONCRETE MEDIAN BARRIER)
960+00 - 965+50 CL

CHAIN-LINK FENCE (6')
960+00, 130.0' RT - 962+38, 109.0' RT
149.0' 963+08 129.0'

RELAYING PIPE CULVERTS (MOD. - LINING CULVERT, 36')
961+61 RT & LT

I-89 CURVE #1 DATA
DELTA= 12°27'43"LT
D = 2°02'47"
R = 2800.00 FT.
T = 305.71 FT.
L = 609.00 FT.
E = 16.64 FT.



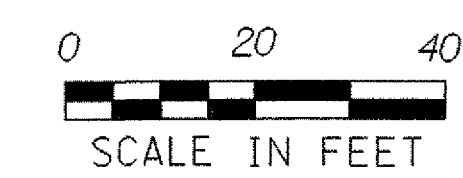
STRUCTURE NO.	CONSTRUCTION & STATION	COMMENTS (SEE NOTE 3)
100	961+61 RT.	CATCH BASIN, TYPE "A" GRATE, RIM 509.06 CONNECT TO EXIST. 36" ACC WITH 36" PCCSP STUB CONNECT TO EXIST. 36" RCP WITH 36" RCP STUB CONNECT TO EXIST. 6" UNDERDRAIN

NOTES

- ALL EXISTING STORM DRAINAGE PIPES AND STRUCTURES ARE SHOWN BASED ON PREVIOUS DESIGN PLANS. NO AS-BUILT INFORMATION WAS AVAILABLE, AND NO SURVEY WAS POSSIBLE DUE TO THEIR LOCATIONS UNDER THE EXISTING CONCRETE MEDIAN BARRIER.
- FOR DETAILS OF LANDSCAPING BEDS, PLANT LISTS AND PLANTING DETAILS, SEE LANDSCAPING DETAIL SHEETS. BEDS ARE DESIGNED AS A 100' TYPICAL PATTERN WHICH WILL BE REPEATED FOR LONGER BEDS.
- TYPE OF STUB REQUIRED TO CONNECT TO EXISTING STORM DRAIN PIPE IS ASSUMED FOR ALL LOCATIONS. THERE MAY BE LOCATIONS WHERE A STUB IS NOT REQUIRED. STUBS WILL BE USED AS DIRECTED BY THE ENGINEER.
- FOR DETAILS OF UNDERDRAIN CONNECTION AND CLEAN OUT SEE MISC. DRAINAGE DETAILS 2.
- ALL REHABING OF DI, CB, OR MH CLASS I ARE LOCATED BETWEEN I-89 NORTHBOUND AND U.S. 2.

LEGEND

CULVERT LINING	
LANDSCAPING BED	
CONCRETE MEDIAN BARRIER	
DROP INLET	
CATCH BASIN	



STA 960+00 - STA 965+50

PROJECT NAME: WATERBURY - BOLTON
PROJECT NUMBER: IM 089 - 2(37)

FILE NAME: d05a110bdr.dgn
PROJECT LEADER: A.J. BOMBARDIER
DESIGNED BY: J.L. SCHULTZ
LAYOUT SHEET 2

PLOT DATE: 29-MAR-2006
DRAWN BY: J.L. SCHULTZ
CHECKED BY:
SHEET 11 OF 80

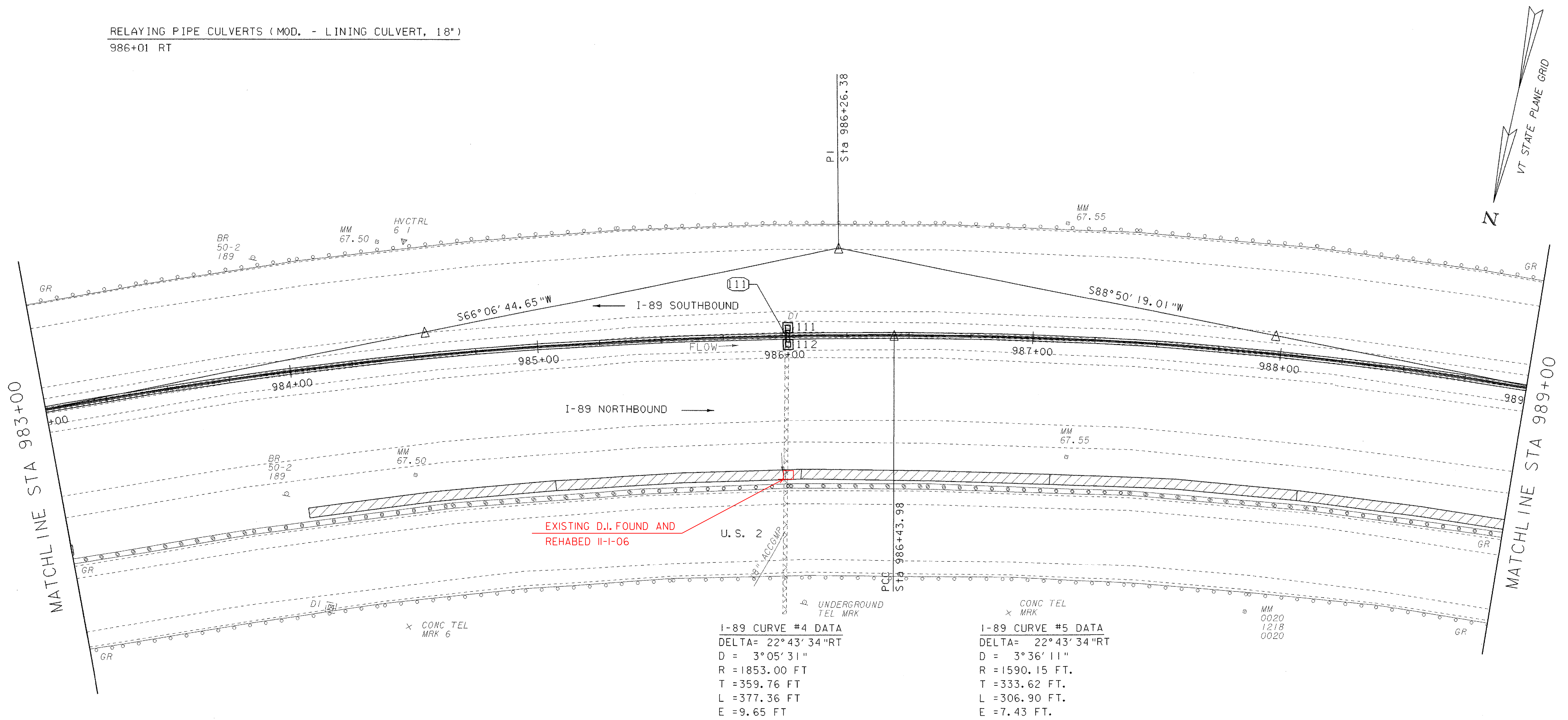
CONCRETE MEDIAN BARRIER (MOD - CAST IN PLACE)
983+00 - 989+00 CL

REMOVAL AND DISPOSAL OF GUARDRAIL (MOD - CONCRETE MEDIAN BARRIER)
983+00 - 989+00 CL

REMOVE EXISTING DROP INLET
986+01 LT

LANDSCAPING BED
984+00 - 989+00 RT

RELAYING PIPE CULVERTS (MOD. - LINING CULVERT, 18")
986+01 RT



STRUCTURE NO.	CONSTRUCTION & STATION	COMMENTS (SEE NOTE 3)
111	986+01 LT.	DROP INLET, TYPE 'B' GRATE, RIM 439.82
112	986+01 RT.	DROP INLET, TYPE 'B' GRATE, RIM 439.83, CONNECT TO EXIST. 18" ACC WITH 18" PCCSP STUB CONNECT TO EXIST. 6" UNDERDRAIN

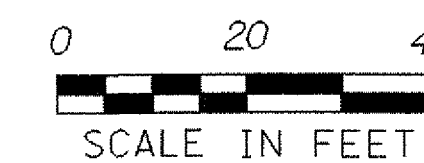
111 CONST. @ 986+01 LT. TO 986+01 RT.
NEW 18" X 5' CPEP CONNECTING TO
NEW DI'S AT 986+01 LT, RT.

NOTES

- ALL EXISTING STORM DRAINAGE PIPES AND STRUCTURES ARE SHOWN BASED ON PREVIOUS DESIGN PLANS. NO AS-BUILT INFORMATION WAS AVAILABLE, AND NO SURVEY WAS POSSIBLE DUE TO THEIR LOCATIONS UNDER THE EXISTING CONCRETE MEDIAN BARRIER.
- FOR DETAILS OF LANDSCAPING BEDS, PLANT LISTS AND PLANTING DETAILS, SEE LANDSCAPING DETAIL SHEETS. BEDS ARE DESIGNED AS A 100' TYPICAL PATTERN WHICH WILL BE REPEATED FOR LONGER BEDS.
- TYPE OF STUB REQUIRED TO CONNECT TO EXISTING STORM DRAIN PIPE IS ASSUMED FOR ALL LOCATIONS. THERE MAY BE LOCATIONS WHERE A STUB IS NOT REQUIRED, STUBS WILL BE USED AS DIRECTED BY THE ENGINEER.
- FOR DETAILS OF UNDERDRAIN CONNECTION AND CLEAN OUT SEE MISC. DRAINAGE DETAILS 2.

LEGEND

CULVERT LINING	
LANDSCAPING BED	
CONCRETE MEDIAN BARRIER	
DROP INLET	
CATCH BASIN	



STA 983+00 - STA 989+00

PROJECT NAME: WATERBURY - BOLTON
PROJECT NUMBER: IM 089 - 2(37)

FILE NAME: d05a110bdr.dgn
PROJECT LEADER: A.J. BOMBARDIER
DESIGNED BY: J.L. SCHULTZ
LAYOUT SHEET 6

PLOT DATE: 29-MAR-2006
DRAWN BY: J.L. SCHULTZ
CHECKED BY:
SHEET 19 OF 80

CONCRETE MEDIAN BARRIER (MOD - CAST IN PLACE)
989+00 - 995+00 CL

REMOVAL AND DISPOSAL OF GUARDRAIL (MOD - CONCRETE MEDIAN BARRIER)
989+00 - 995+00 CL

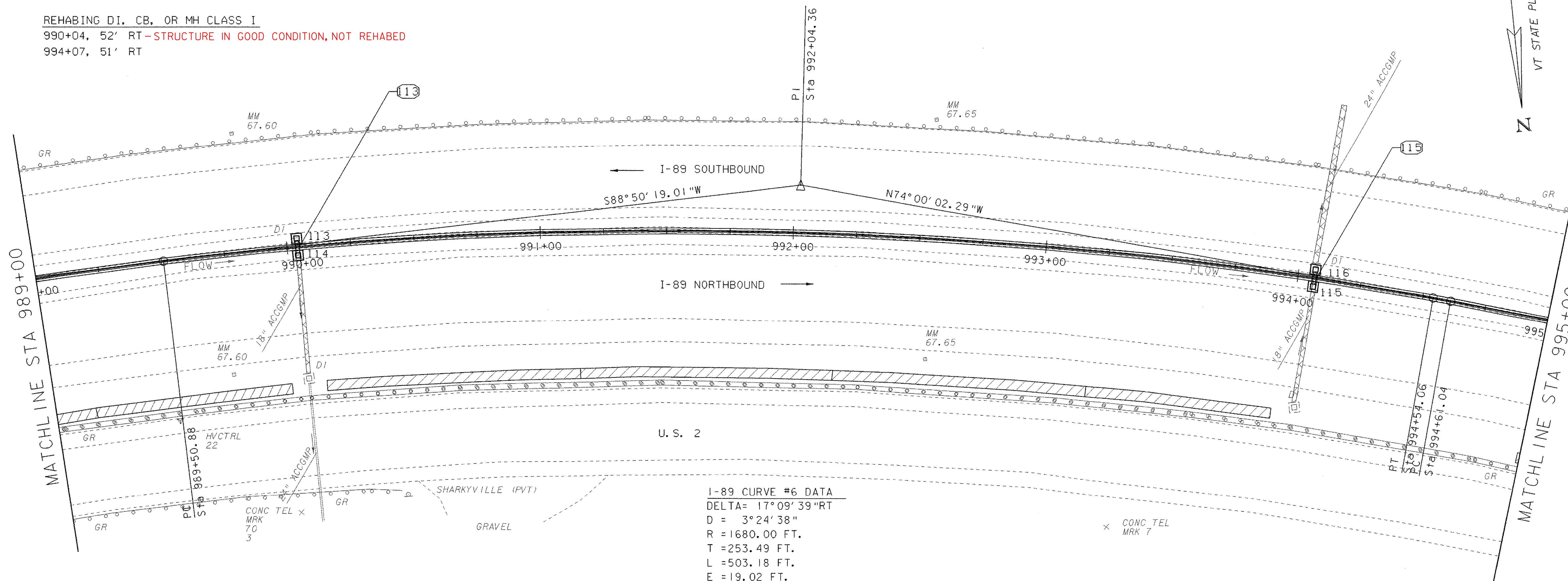
REMOVE EXISTING DROP INLET
990+04 LT
994+07 LT

LANDSCAPING BED
989+00 - 993+99 RT

RELAYING PIPE CULVERTS (MOD. - LINING CULVERT, 18")
990+04 RT
994+07 RT

RELAYING PIPE CULVERTS (MOD. - LINING CULVERT, 24")
994+07 LT

REHABING DI, CB, OR MH CLASS I
990+04, 52' RT - STRUCTURE IN GOOD CONDITION, NOT REHABED
994+07, 51' RT



I-89 CURVE #6 DATA
DELTA= 17°09'39"RT
D = 3°24'38"
R = 1680.00 FT.
T = 253.49 FT.
L = 503.18 FT.
E = 19.02 FT.

STRUCTURE NO.	CONSTRUCTION & STATION	COMMENTS (SEE NOTE 3)
113	990+04 LT.	DROP INLET, TYPE "B" GRATE, RIM 427.85
114	990+04 RT.	DROP INLET, TYPE "B" GRATE, RIM 427.89, CONNECT TO EXIST. 18" ACC WITH 18" PCCSP STUB
115	994+07 RT.	DROP INLET, TYPE "B" GRATE, RIM 416.02, CONNECT TO EXIST. 18" RCP WITH 18" RCP STUB
116	994+07 LT.	DROP INLET, TYPE "B" GRATE, RIM 415.78, CONNECT TO EXIST. 18" RCP WITH 18" RCP STUB

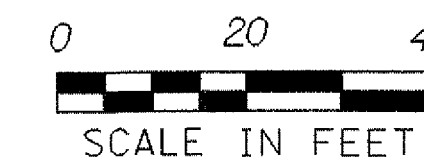
- 13 CONST. @ 990+04 LT. TO 990+04 RT.
NEW 18" X 5' CPEP CONNECTING TO
NEW DI'S AT 990+04 LT, RT.
- 15 CONST. @ 994+07 RT. TO 994+07 LT.
NEW 18" X 5' CPEP CONNECTING TO
NEW DI'S AT 994+07 RT, LT.

NOTES

1. ALL EXISTING STORM DRAINAGE PIPES AND STRUCTURES ARE SHOWN BASED ON PREVIOUS DESIGN PLANS. NO AS-BUILT INFORMATION WAS AVAILABLE, AND NO SURVEY WAS POSSIBLE DUE TO THEIR LOCATIONS UNDER THE EXISTING CONCRETE MEDIAN BARRIER.
2. FOR DETAILS OF LANDSCAPING BEDS, PLANT LISTS AND PLANTING DETAILS, SEE LANDSCAPING DETAIL SHEETS. BEDS ARE DESIGNED AS A 100' TYPICAL PATTERN WHICH WILL BE REPEATED FOR LONGER BEDS.
3. TYPE OF STUB REQUIRED TO CONNECT TO EXISTING STORM DRAIN PIPE IS ASSUMED FOR ALL LOCATIONS. THERE MAY BE LOCATIONS WHERE A STUB IS NOT REQUIRED. STUBS WILL BE USED AS DIRECTED BY THE ENGINEER.
4. FOR DETAILS OF UNDERDRAIN CONNECTION AND CLEAN OUT SEE MISC. DRAINAGE DETAILS 2.
5. ALL REHABING OF DI, CB, OR MH CLASS I ARE LOCATED BETWEEN I-89 NORTHBOUND AND U.S. 2.

LEGEND

CULVERT LINING	
LANDSCAPING BED	
CONCRETE MEDIAN BARRIER	
DROP INLET	
CATCH BASIN	



STA 989+00 - STA 995+00

PROJECT NAME: WATERBURY - BOLTON
PROJECT NUMBER: IM 089 - 2(37)

FILE NAME: d05a110bdr.dgn
PROJECT LEADER: A.J. BOMBARDIER
DESIGNED BY: J.L. SCHULTZ
LAYOUT SHEET 7

PLOT DATE: 29-MAR-2006
DRAWN BY: J.L. SCHULTZ
CHECKED BY:
SHEET 21 OF 80

CONCRETE MEDIAN BARRIER (MOD - CAST IN PLACE)
995+00 - 1001+00 CL

REMOVAL AND DISPOSAL OF GUARDRAIL (MOD - CONCRETE MEDIAN BARRIER)
995+00 - 1001+00 CL

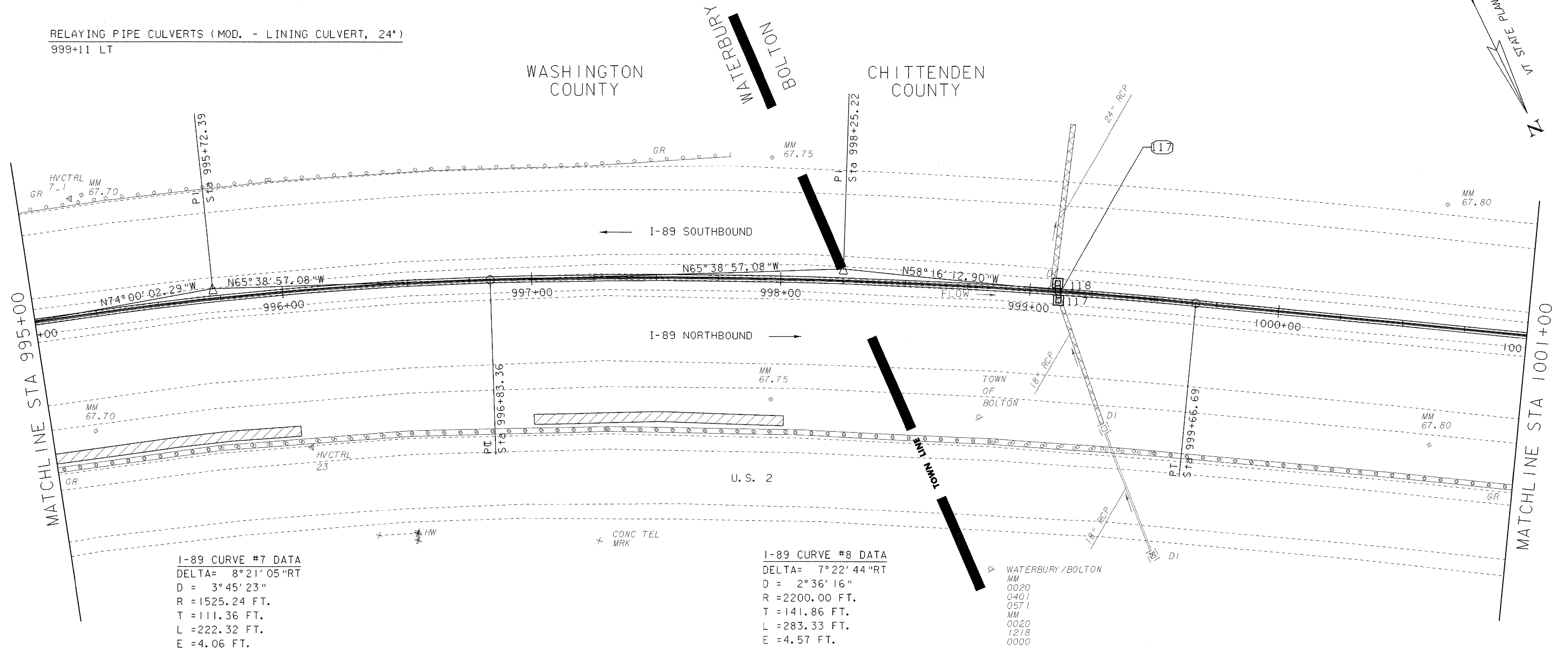
REMOVE EXISTING DROP INLET
999+11 LT

LANDSCAPING BED
995+00 - 996+00 RT
997+00 - 998+00 RT

RELAYING PIPE CULVERTS (MOD. - LINING CULVERT, 18")
999+12 RT

REHABING DI, CB, OR MH CLASS I
999+38, 53' RT - STRUCTURE IN GOOD CONDITION, NOT REHABED

RELAYING PIPE CULVERTS (MOD. - LINING CULVERT, 24")
999+11 LT



I-89 CURVE #7 DATA
DELTA= 8°21'05"RT
D = 3°45'23"
R = 1525.24 FT.
T = 111.36 FT.
L = 222.32 FT.
E = 4.06 FT.

I-89 CURVE #8 DATA
DELTA= 7°22'44"RT
D = 2°36'16"
R = 2200.00 FT.
T = 141.86 FT.
L = 283.33 FT.
E = 4.57 FT.

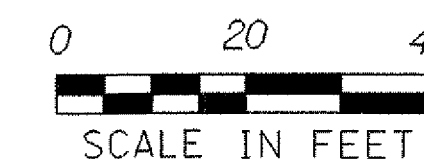
WATERBURY/BOLTON
MM
0020
0401
0571
MM
0020
1218
0000

STRUCTURE NO.	CONSTRUCTION @ STATION	COMMENTS (SEE NOTE 3)
117	999+12 RT.	DROP INLET, TYPE "A" GRATE, RIM 403.34, CONNECT TO EXIST. 18" RCP WITH 18" RCP STUB
118	999+11 LT.	DROP INLET, TYPE "A" GRATE, RIM 403.42, CONNECT TO EXIST. 24" RCP WITH 24" RCP STUB CONNECT TO EXIST. 6" UNDERDRAIN

117 CONST. @ 999+12 RT. TO 999+11 LT.
NEW 24" X 5' CPEP CONNECTING TO
NEW DI'S AT 999+12 RT, 999+11 LT.

NOTES

- ALL EXISTING STORM DRAINAGE PIPES AND STRUCTURES ARE SHOWN BASED ON PREVIOUS DESIGN PLANS. NO AS-BUILT INFORMATION WAS AVAILABLE, AND NO SURVEY WAS POSSIBLE DUE TO THEIR LOCATIONS UNDER THE EXISTING CONCRETE MEDIAN BARRIER.
- FOR DETAILS OF LANDSCAPING BEDS, PLANT LISTS AND PLANTING DETAILS, SEE LANDSCAPING DETAIL SHEETS. BEDS ARE DESIGNED AS A 100' TYPICAL PATTERN WHICH WILL BE REPEATED FOR LONGER BEDS.
- TYPE OF STUB REQUIRED TO CONNECT TO EXISTING STORM DRAIN PIPE IS ASSUMED FOR ALL LOCATIONS. THERE MAY BE LOCATIONS WHERE A STUB IS NOT REQUIRED. STUBS WILL BE USED AS DIRECTED BY THE ENGINEER.
- FOR DETAILS OF UNDERDRAIN CONNECTION AND CLEAN OUT SEE MISC. DRAINAGE DETAILS 2.
- ALL REHABING OF DI, CB, OR MH CLASS I ARE LOCATED BETWEEN I-89 NORTHBOUND AND U.S. 2.



LEGEND

CULVERT LINING	
LANDSCAPING BED	
CONCRETE MEDIAN BARRIER	
DROP INLET	
CATCH BASIN	

STA 995+00 - STA 1001+00

PROJECT NAME: WATERBURY - BOLTON
PROJECT NUMBER: IM 089 - 2(37)

FILE NAME: d05a110bdr.dgn
PROJECT LEADER: A.J. BOMBARDIER
DESIGNED BY: J. L. SCHULTZ
LAYOUT SHEET 8

PLOT DATE: 29-MAR-2006
DRAWN BY: J. L. SCHULTZ
CHECKED BY:
SHEET 23 OF 80

CONCRETE MEDIAN BARRIER (MOD - CAST IN PLACE)
1001+00 - 1007+00 CL

REMOVAL AND DISPOSAL OF GUARDRAIL (MOD - CONCRETE MEDIAN BARRIER)
1001+00 - 1007+00 CL

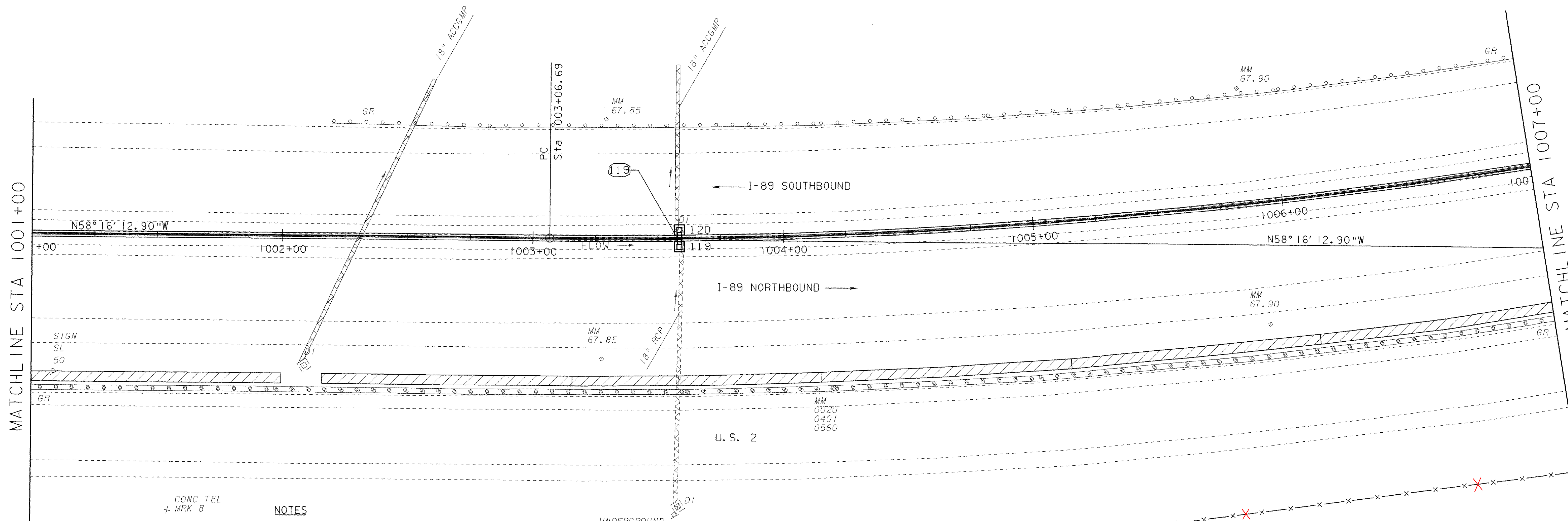
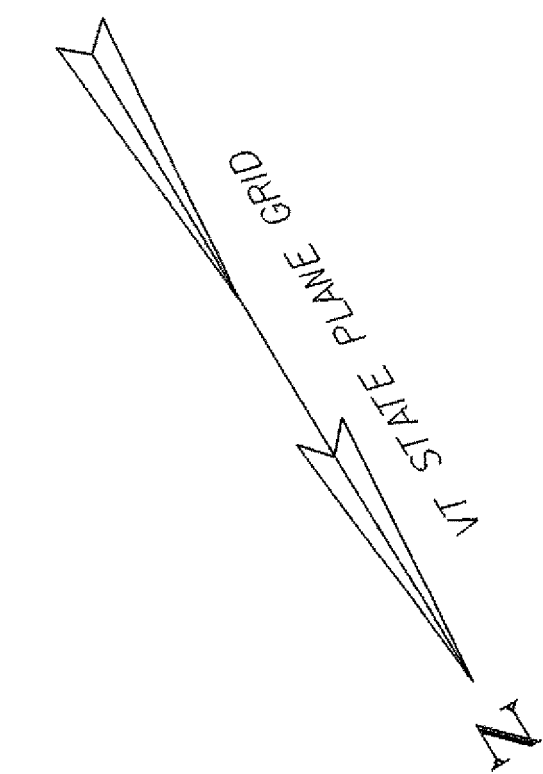
CHAIN-LINK FENCE (6')
1005+44, ~~124.0'~~ RT - 1007+00, ~~123.0'~~ RT
137.0' 156.0'

REMOVE EXISTING DROP INLET
1003+59 LT

LANDSCAPING BED
1001+00 - 1007+00 RT

REHABING DI, CB, OR MH CLASS I
1002+12, 52' RT

RELAYING PIPE CULVERTS (MOD. - LINING CULVERT, 18")
1002+17 RT - LT
1003+59 RT & LT



CONC TEL
+ MRK 8

NOTES

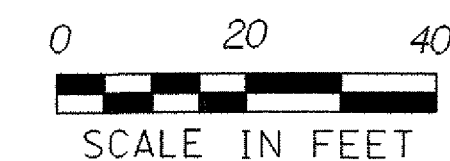
1. ALL EXISTING STORM DRAINAGE PIPES AND STRUCTURES ARE SHOWN BASED ON PREVIOUS DESIGN PLANS. NO AS-BUILT INFORMATION WAS AVAILABLE, AND NO SURVEY WAS POSSIBLE DUE TO THEIR LOCATIONS UNDER THE EXISTING CONCRETE MEDIAN BARRIER.
2. FOR DETAILS OF LANDSCAPING BEDS, PLANT LISTS AND PLANTING DETAILS, SEE LANDSCAPING DETAIL SHEETS. BEDS ARE DESIGNED AS A 100' TYPICAL PATTERN WHICH WILL BE REPEATED FOR LONGER BEDS.
3. TYPE OF STUB REQUIRED TO CONNECT TO EXISTING STORM DRAIN PIPE IS ASSUMED FOR ALL LOCATIONS. THERE MAY BE LOCATIONS WHERE A STUB IS NOT REQUIRED. STUBS WILL BE USED AS DIRECTED BY THE ENGINEER.
4. FOR DETAILS OF UNDERDRAIN CONNECTION AND CLEAN OUT SEE MISC. DRAINAGE DETAILS 2.
5. ALL REHABING OF DI, CB, OR MH CLASS I ARE LOCATED BETWEEN I-89 NORTHBOUND AND U.S. 2.

STRUCTURE NO.	CONSTRUCTION @ STATION	COMMENTS (SEE NOTE 3)
119	1003+59 RT.	DROP INLET, TYPE "A" GRATE, RIM 398.88, CONNECT TO EXIST. 18" ACC WITH 18" PCCSP STUB
120	1003+59 LT.	DROP INLET, TYPE "A" GRATE, RIM 398.43, CONNECT TO EXIST. 18" ACC WITH 18" PCCSP STUB
		CONNECT TO EXIST. 6" UNDERDRAIN

CONST. @ 1003+59 RT. TO 1003+59 LT.
NEW 18" X 5' CPEP CONNECTING TO
NEW DI'S AT 1003+59 RT, LT.

LEGEND

CULVERT LINING	
LANDSCAPING BED	
CONCRETE MEDIAN BARRIER	
DROP INLET	
CATCH BASIN	



STA 1001+00 - STA 1007+00

PROJECT NAME: WATERBURY - BOLTON	PROJECT NUMBER: IM 089 - 2(37)
FILE NAME: d05a110bdr.dgn	PLOT DATE: 29-MAR-2006
PROJECT LEADER: A.J. BOMBARDIER	DRAWN BY: J.L. SCHULTZ
DESIGNED BY: J.L. SCHULTZ	CHECKED BY:
LAYOUT SHEET 9	SHEET 25 OF 80

CONCRETE MEDIAN BARRIER (MOD - CAST IN PLACE)
1007+00 - 1013+00 CL

REMOVAL AND DISPOSAL OF GUARDRAIL (MOD - CONCRETE MEDIAN BARRIER)
1007+00 - 1013+00 CL

LANDSCAPING BED
1007+00 - 1010+14 RT
1012+00 - 1013+00 RT

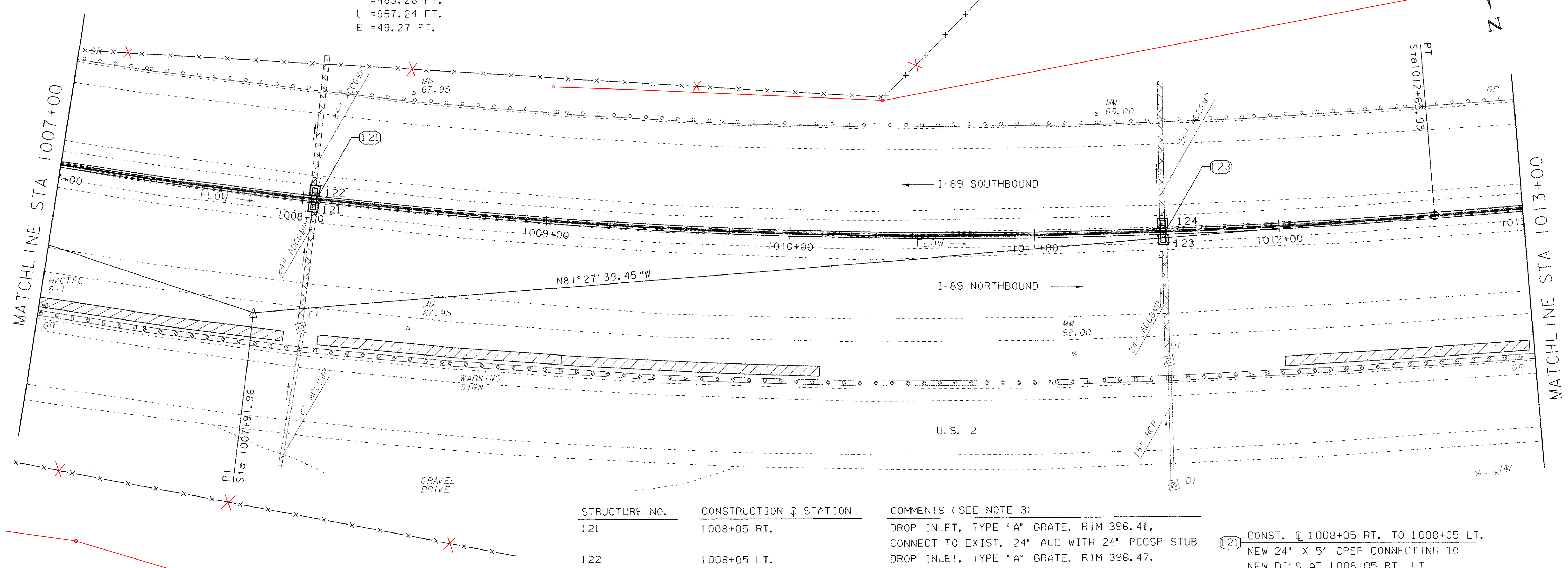
REMOVE EXISTING DROP INLET
1008+05 LT
1011+53 LT

CHAIN-LINK FENCE (6')
156.0' 1007+00, 123.0' RT - 1009+00, 138.0' RT 1012+65 92.0' +/-
1007+00, 47.0' LT - 1010+37, 53.5' LT - 1011+00, 117.4' LT
1009+00 53.0'

REHABING DI, CB, OR MH CLASS I
1008+05, 53' RT
1011+53, 53' RT

I-89 CURVE #9 DATA
DELTA= 23° 11' 27" LT
D = 2° 25' 22"
R = 2365.00 FT.
T = 485.26 FT.
L = 957.24 FT.
E = 49.27 FT.

RELAYING PIPE CULVERTS (MOD. - LINING CULVERT, 24")
1008+05 RT & LT
1011+53 RT & LT



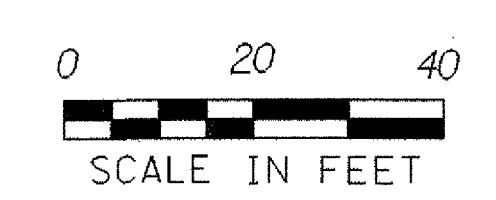
STRUCTURE NO.	CONSTRUCTION @ STATION	COMMENTS (SEE NOTE 3)
121	1008+05 RT.	DROP INLET, TYPE "A" GRATE, RIM 396.41, CONNECT TO EXIST. 24" ACC WITH 24" PCCSP STUB
122	1008+05 LT.	DROP INLET, TYPE "A" GRATE, RIM 396.47, CONNECT TO EXIST. 24" ACC WITH 24" PCCSP STUB
123	1011+53 RT.	CONNECT TO EXIST. 6" UNDERDRAIN DROP INLET, TYPE "A" GRATE, RIM 394.84, CONNECT TO EXIST. 24" RCP WITH 24" RCP STUB
124	1011+53 LT.	DROP INLET, TYPE "A" GRATE, RIM 395.28 CONNECT TO EXIST. 24" ACC WITH 24" PCCSP STUB CONNECT TO EXIST. 6" UNDERDRAIN

- 121 CONST. @ 1008+05 RT. TO 1008+05 LT.
NEW 24" X 5' CPEP CONNECTING TO NEW DI'S AT 1008+05 RT, LT.
- 123 CONST. @ 1011+53 RT. TO 1011+53 LT.
NEW 24" X 5' CPEP CONNECTING TO NEW DI'S AT 1011+53 RT, LT.

- NOTES**
- ALL EXISTING STORM DRAINAGE PIPES AND STRUCTURES ARE SHOWN BASED ON PREVIOUS DESIGN PLANS. NO AS-BUILT INFORMATION WAS AVAILABLE, AND NO SURVEY WAS POSSIBLE DUE TO THEIR LOCATIONS UNDER THE EXISTING CONCRETE MEDIAN BARRIER.
 - FOR DETAILS OF LANDSCAPING BEDS, PLANT LISTS AND PLANTING DETAILS, SEE LANDSCAPING DETAIL SHEETS. BEDS ARE DESIGNED AS A 100' TYPICAL PATTERN WHICH WILL BE REPEATED FOR LONGER BEDS.
 - TYPE OF STUB REQUIRED TO CONNECT TO EXISTING STORM DRAIN PIPE IS ASSUMED FOR ALL LOCATIONS. THERE MAY BE LOCATIONS WHERE A STUB IS NOT REQUIRED, STUBS WILL BE USED AS DIRECTED BY THE ENGINEER.
 - FOR DETAILS OF UNDERDRAIN CONNECTION AND CLEAN OUT SEE MISC. DRAINAGE DETAILS 2.
 - ALL REHABING OF DI, CB, OR MH CLASS I ARE LOCATED BETWEEN I-89 NORTHBOUND AND U.S. 2.

LEGEND

- CULVERT LINING
- LANDSCAPING BED
- CONCRETE MEDIAN BARRIER
- DROP INLET
- CATCH BASIN



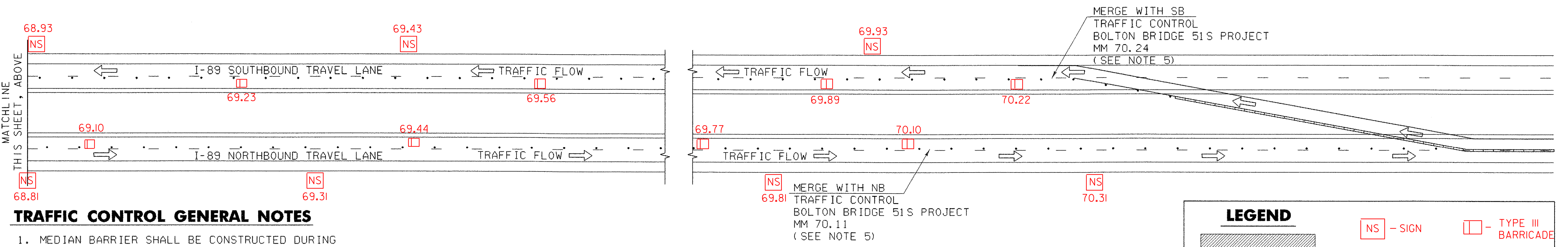
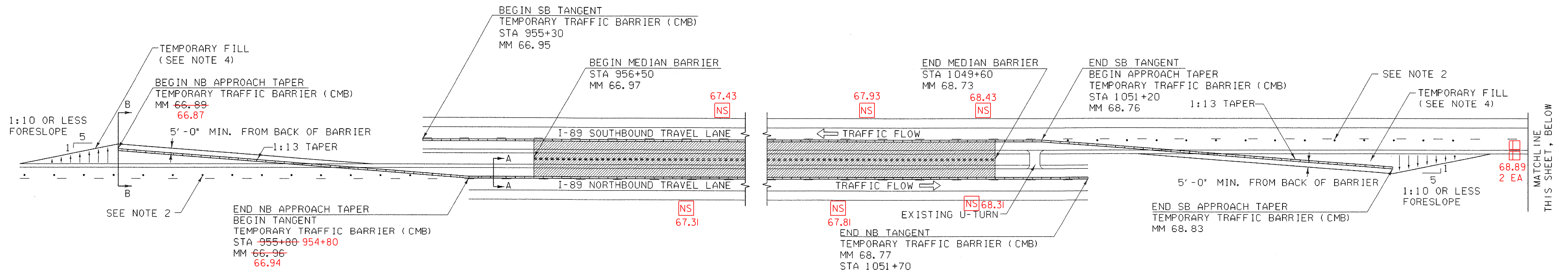
STA 1007+00 - STA 1013+00

PROJECT NAME: WATERBURY - BOLTON
PROJECT NUMBER: IM 089 - 2(37)

FILE NAME: d05a110bdr.dgn
PROJECT LEADER: A.J. BOMBARDIER
DESIGNED BY: J. L. SCHULTZ

PLOT DATE: 29-MAR-2006
DRAWN BY: J. L. SCHULTZ
CHECKED BY:
SHEET 27 OF 80

LAYOUT SHEET 10



TRAFFIC CONTROL GENERAL NOTES

- MEDIAN BARRIER SHALL BE CONSTRUCTED DURING THE FIRST CONSTRUCTION SEASON. CHAIN LINK FENCE, REHABING DI'S BETWEEN I-89 NB AND U.S. 2, AND LANDSCAPING SHALL BE CONSTRUCTED DURING THE SECOND CONSTRUCTION SEASON.
- TRAFFIC CONTROL SIGNS, BARRICADES, REFLECTORIZED PLASTIC DRUMS, AND OTHER TRAFFIC CONTROL DEVICES SHALL BE PLACED IN ACCORDANCE WITH STANDARD E-103.
- WHERE ROADWAY CAPACITY IS REDUCED TO A SINGLE LANE DUE TO TEMPORARY TRAFFIC CONTROL MEASURES, A "NO STOPPING ON SHOULDER" SIGN SHALL BE PLACED AT 1/2 MILE INCREMENTS ON BOTH NB AND SB LANES OF I-89 THROUGH THE LENGTH OF THE PROJECT, AND TO THE BOLTON BRIDGE 51S PROJECT. THIS SIGN IS DETAILED ON TRAFFIC CONTROL SHEET 2.
- TEMPORARY FILL SHALL MEET THE SPECIFICATIONS FOR EARTH BORROW AND SHALL NOT BE PAID FOR DIRECTLY, BUT WILL BE INCIDENTAL TO THE ITEM TEMPORARY TRAFFIC BARRIER (CMB).
- THE ENGINEER AND CONTRACTOR SHALL COORDINATE WITH THE ENGINEER FOR THE BOLTON BRIDGE 51S PROJECT REGARDING REFLECTORIZED PLASTIC DRUM PLACEMENT TO ENSURE SEAMLESS TRAFFIC CONTROL BETWEEN PROJECTS.

FENCE AND LANDSCAPING

- WHILE CONSTRUCTING THE CHAIN LINK FENCE AND LANDSCAPING PORTION OF THE PROJECT, THE CONTRACTOR SHALL PLACE TRAFFIC CONTROL IN ACCORDANCE WITH STANDARD E-111.

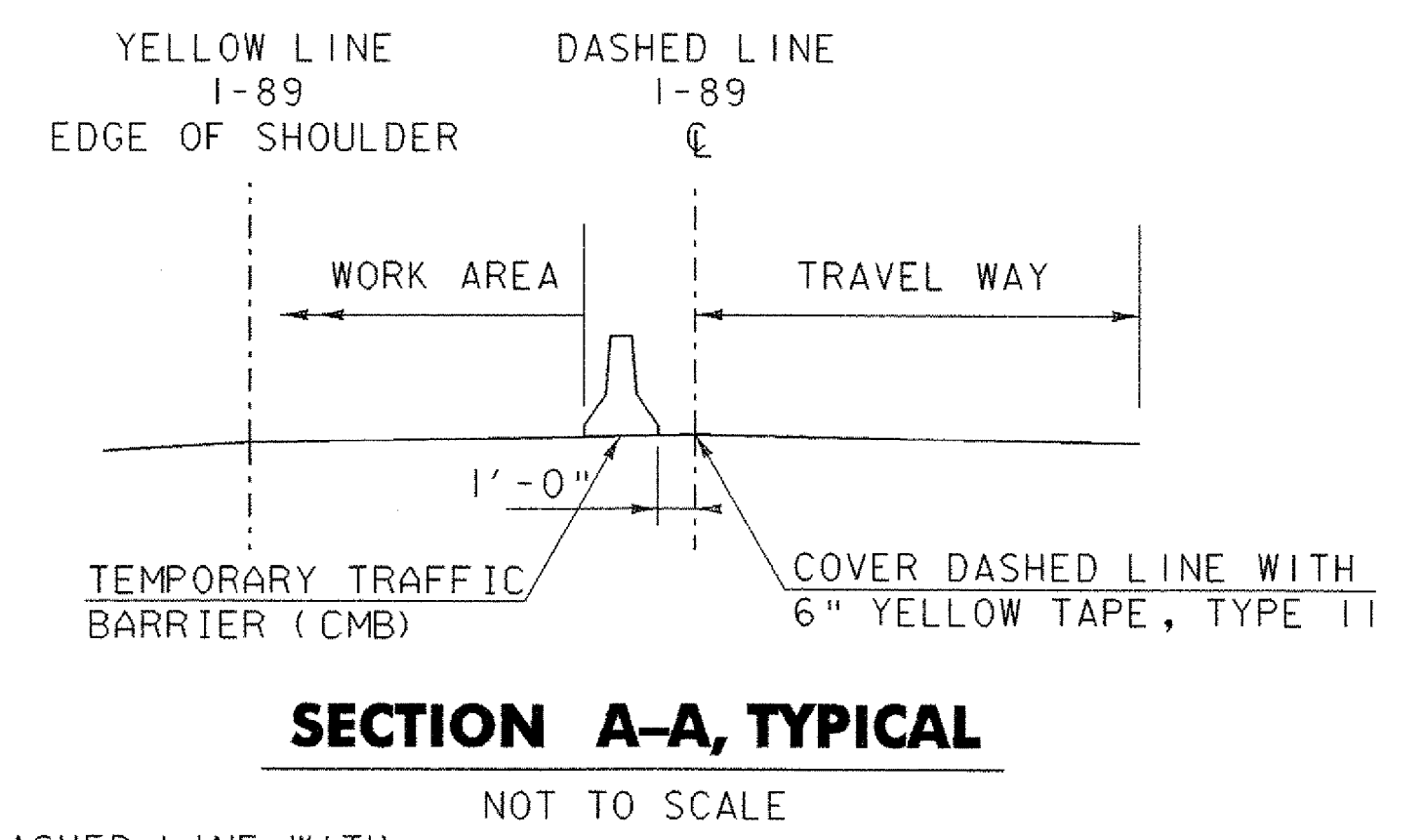
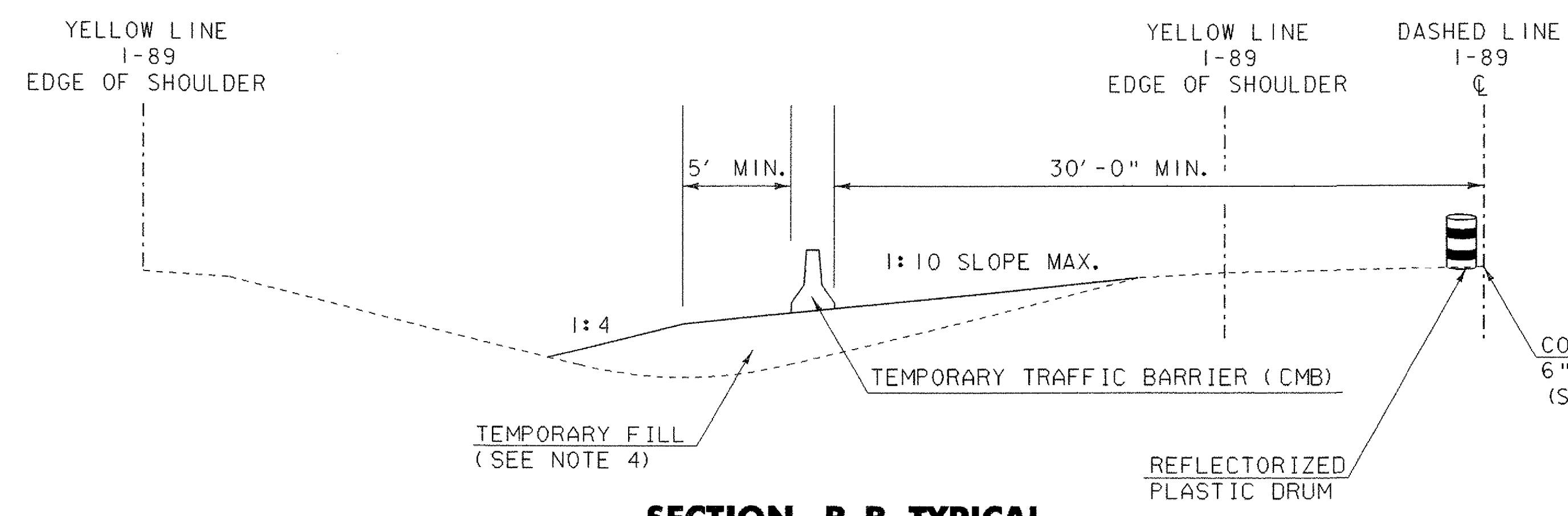
MEDIAN BARRIER TRAFFIC CONTROL, PLAN VIEW

NOT TO SCALE

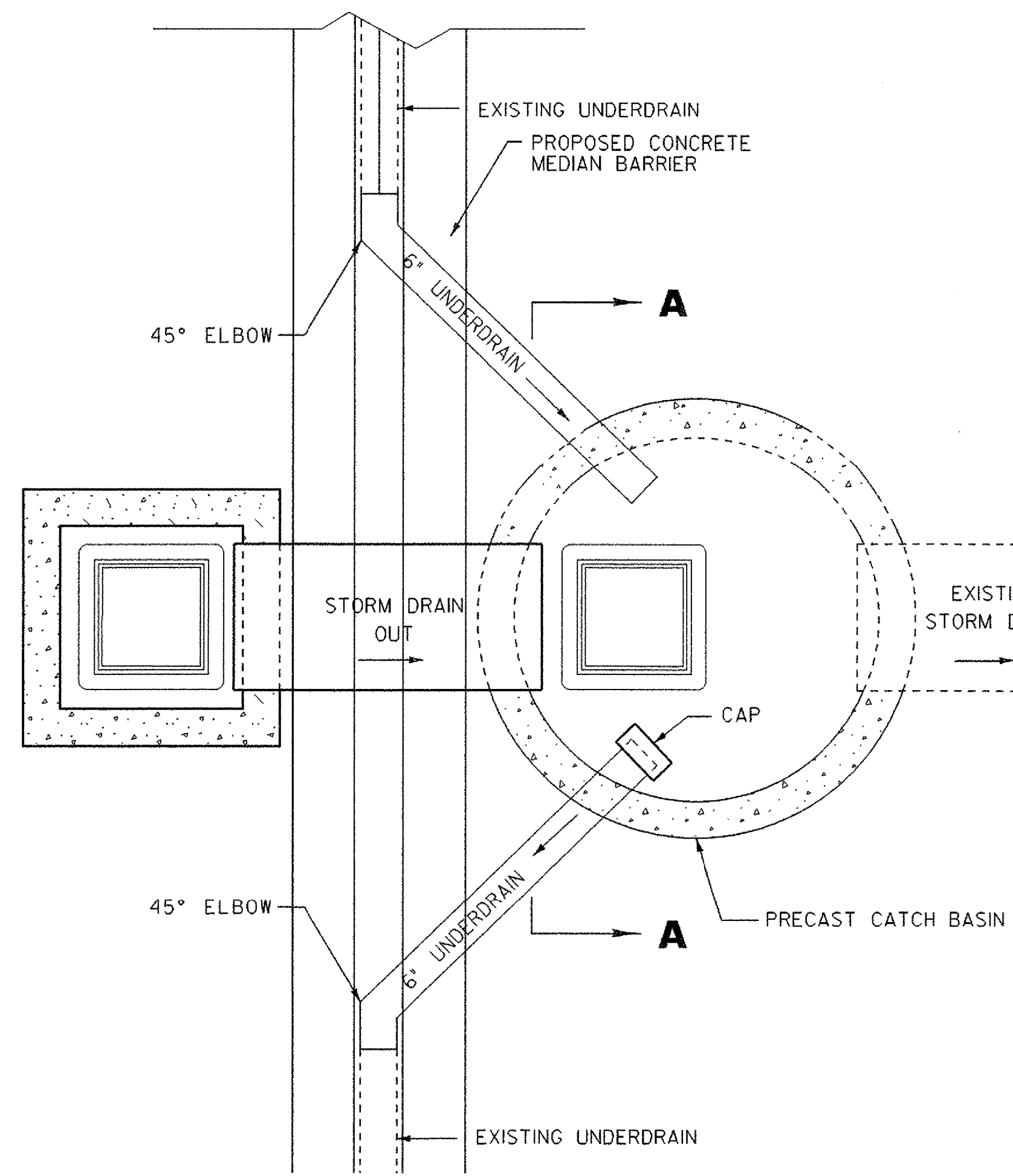
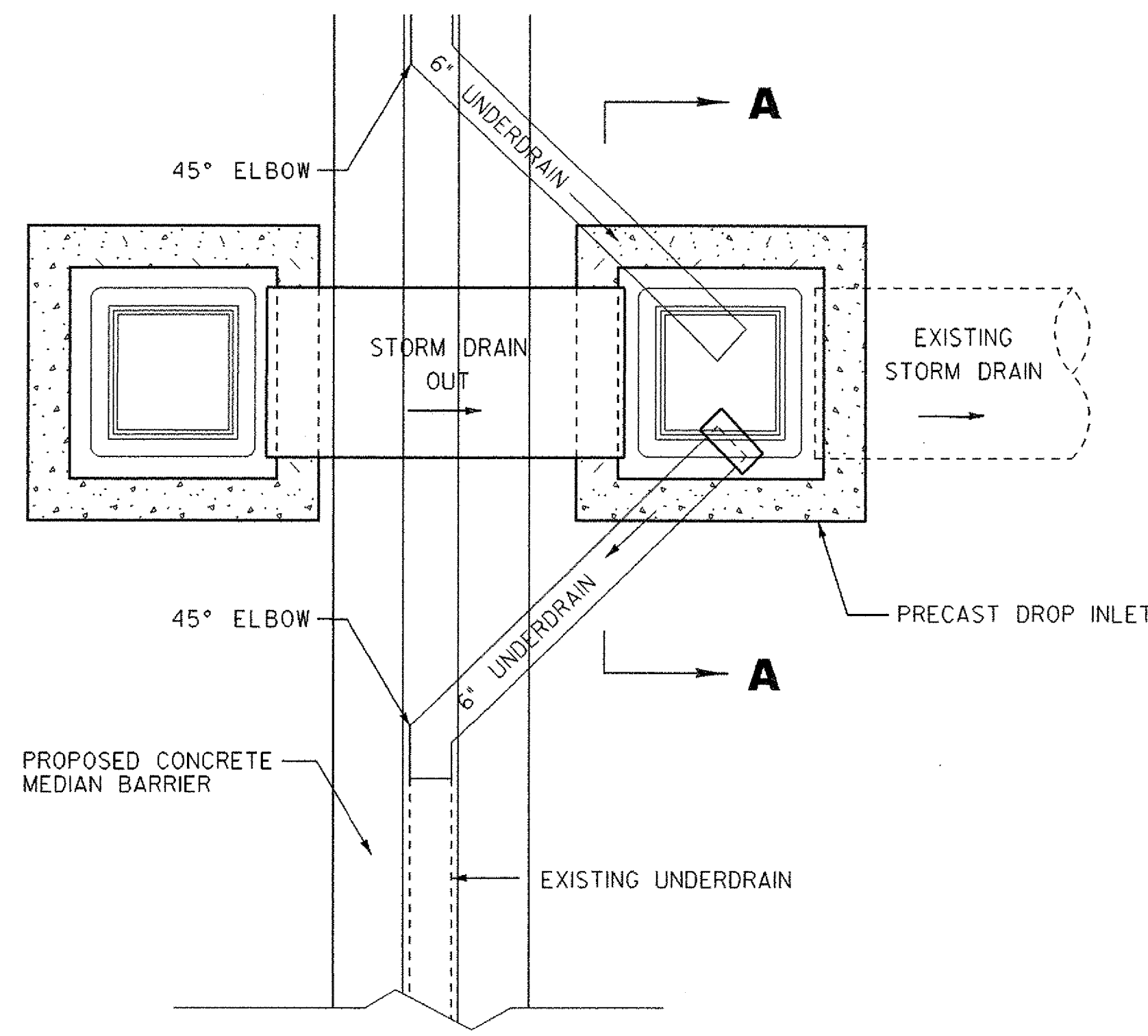
NO STOPPING SIGNS - 13 EA
 TYPE III BARRICADES - 12 EA

LEGEND

- SIGN
 - TYPE III BARRICADE
 - MEDIAN BARRIER WORK ZONE
 - REFLECTORIZED PLASTIC DRUMS

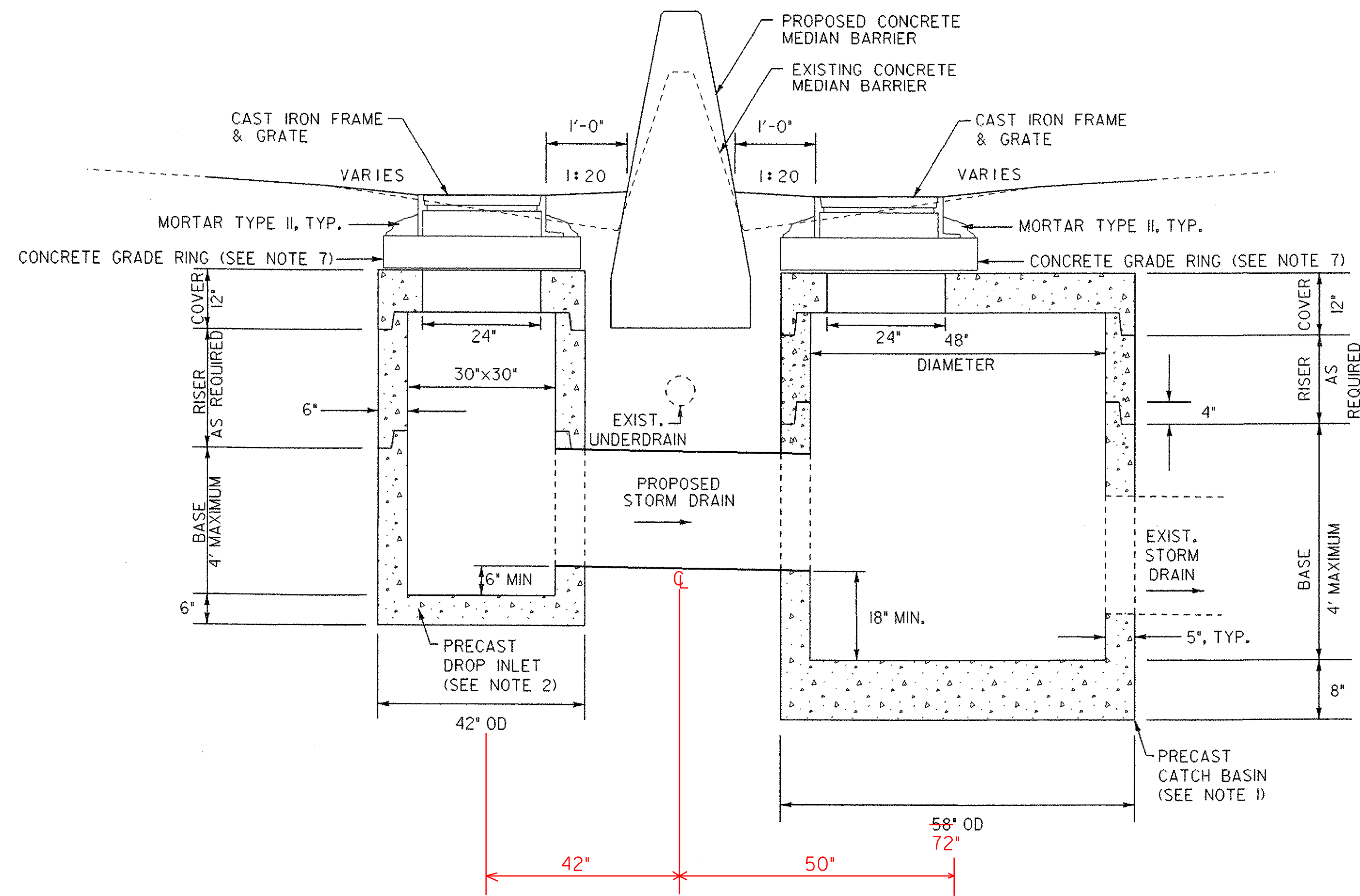


PROJECT NAME:	WATERBURY - BOLTON
PROJECT NUMBER:	IM 089 - 2(37)
FILE NAME:	d05a110+c.dgn
PROJECT LEADER:	A. J. BOMBARDIER
DESIGNED BY:	J. L. SCHULTZ
TRAFFIC CONTROL SHEET 1	
PLOT DATE:	29-MAR-2006
DRAWN BY:	T. GUAZZONI
CHECKED BY:	J. L. SCHULTZ
SHEET 49	OF 80



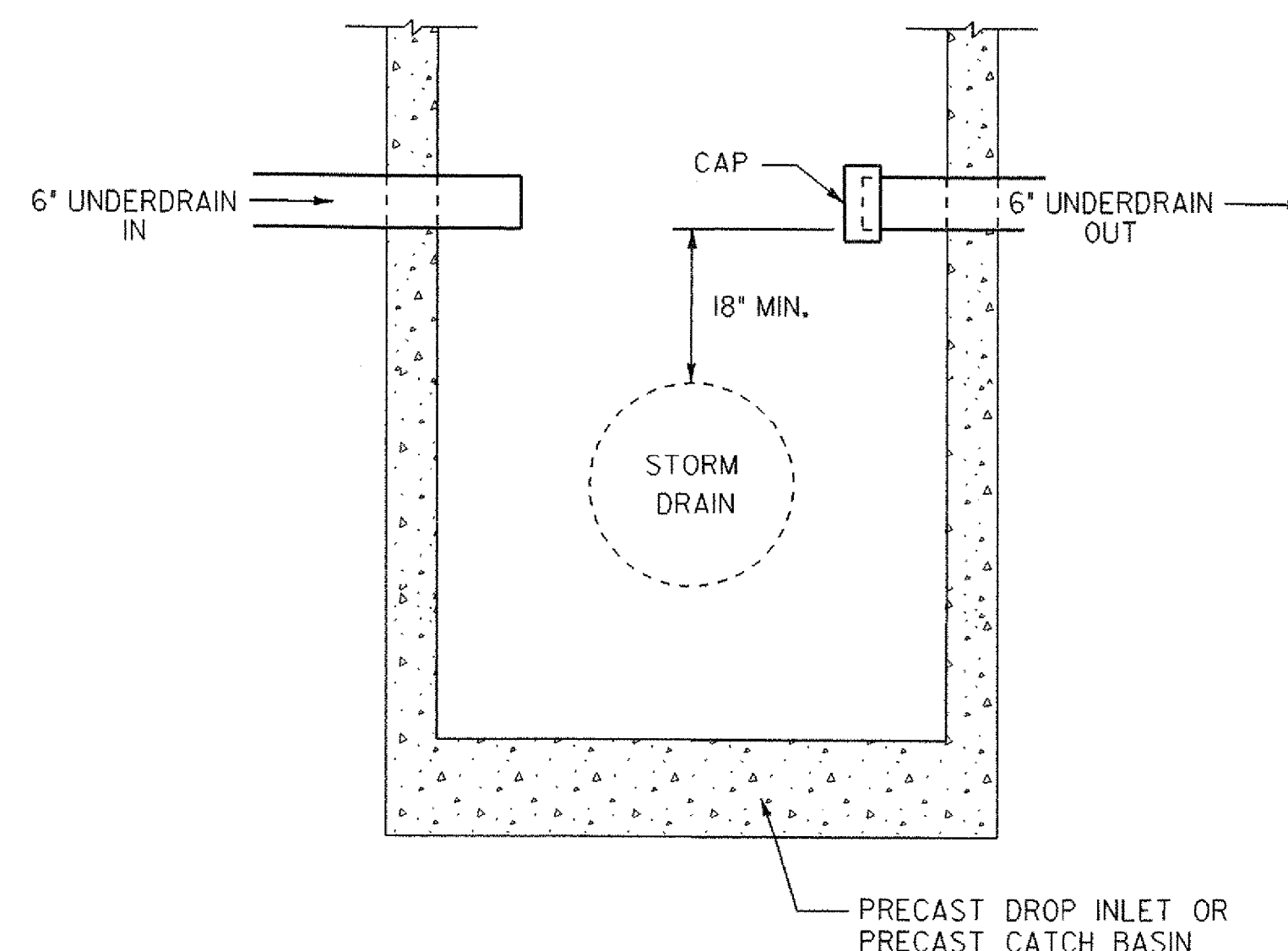
UNDERDRAIN CONNECTION AND CLEANOUT

N. T. S.



MEDIAN BARRIER DRAINAGE

N. T. S.



SECTION A-A

N. T. S.

NOTES:

1. PRECAST CATCH BASIN SECTIONS SHALL BE BUILT TO ASTM SPECIFICATION C478-88. IN ADDITION, THE FOLLOWING REQUIREMENTS SHALL BE MET:
 - A. 4000 PSI CONCRETE, 28 DAY STRENGTH
 - B. STEEL REINFORCED TO MEET ASTM SPECIFICATIONS.
 - C. STEEL REINFORCED COPOLYMER POLYPROPYLENE LADDER RUNGS AT 12" O.C.
 - D. COVER SHALL MEET H20 LOADING.
2. PRECAST DROP INLET SECTIONS SHALL BE BUILT TO ASTM SPECIFICATION C478-88. IN ADDITION, THE FOLLOWING REQUIREMENTS SHALL BE MET:
 - A. 4000 PSI CONCRETE, 28 DAY STRENGTH
 - B. STEEL REINFORCED TO MEET ASTM SPECIFICATIONS.
 - C. COVER SHALL MEET H20 LOADING.
3. CAST IRON FRAME AND GRATE, MORTAR TYPE II, CONCRETE GRADE RINGS, EXCAVATION AND BACKFILL SHALL BE PAID INCIDENTAL TO PRECAST DROP INLETS AND PRECAST CATCH BASINS.
4. 6" UNDERDRAIN, 45° ELBOWS AND CAPS SHALL BE PAID AS 6" UNDERDRAIN CARRIER PIPE.
5. CONNECTION TO EXISTING STORM DRAIN SHALL BE MADE WITH A STUB AS REQUIRED. STUB SIZES AND MATERIALS ARE TO BE AS SHOWN ON THE LAYOUT SHEETS AND THE DRAINAGE DETAIL SHEETS, OR AS DIRECTED BY THE ENGINEER.
6. EXISTING STORM DRAIN PIPES TO BE LINED ARE CALLED OUT ON THE LAYOUT PLANS. INSTALL CULVERT LINING IN EXISTING STORM DRAIN PIPES SUCH THAT LINING EXTENDS TO THE END OF THE EXISTING PIPE AND BACK THROUGH THE NEW STUB AND TO THE NEW DRAINAGE STRUCTURE.
7. CONCRETE GRADE RINGS SHALL BE USED TO SET FRAME AND GRATE TO PROPER ELEVATIONS AS REQUIRED. MAXIMUM TOTAL GRADE RING HEIGHT USED SHALL BE 12". GRADE RINGS SHALL BE MORTARED IN PLACE WITH MORTAR, TYPE II.

PROJECT NAME: WATERBURY - BOLTON

PROJECT NUMBER: IM 089 - 2(37)

FILE NAME: d05a110DET.dgn

PROJECT LEADER: A. J. BOMBARDIER

DESIGNED BY: J. L. SCHULTZ

MISC. DRAINAGE DETAILS 2

PLOT DATE: 29-MAR-2006

DRAWN BY: T. GUAZZONI

CHECKED BY:

SHEET 55 OF 80

