

CONCRETE MEDIAN BARRIER (MOD - CAST IN PLACE)
960+00 - 965+50 CL

REMOVE EXISTING DROP INLET
961+61 RT

LANDSCAPING BED
962+00 - 964+95 RT

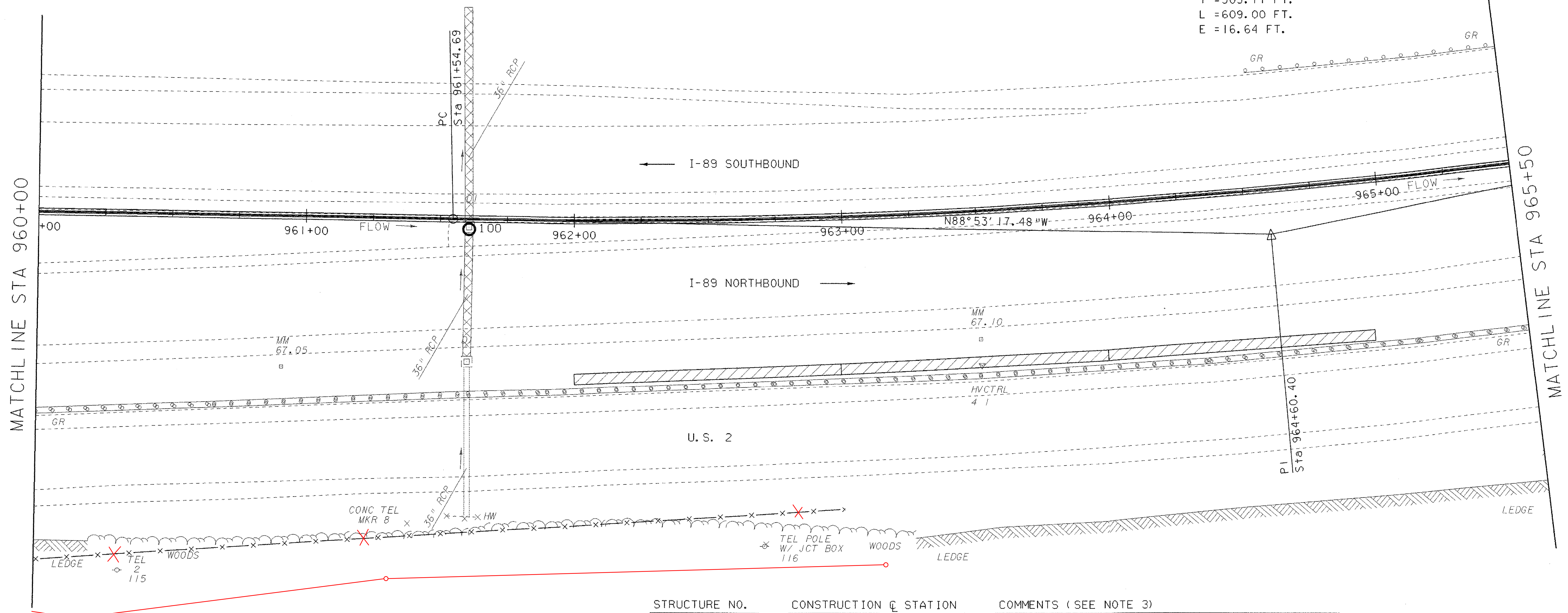
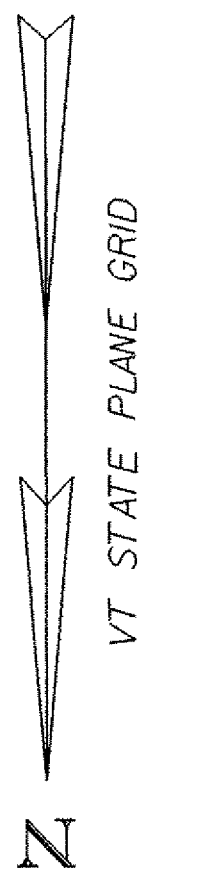
REHABING DI, CB, OR MH CLASS I
961+61, 53' RT

REMOVAL AND DISPOSAL OF GUARDRAIL (MOD - CONCRETE MEDIAN BARRIER)
960+00 - 965+50 CL

CHAIN-LINK FENCE (6')
960+00, 130.0' RT - 962+38, 109.0' RT
149.0' 963+08 129.0'

RELAYING PIPE CULVERTS (MOD. - LINING CULVERT, 36')
961+61 RT & LT

I-89 CURVE #1 DATA
DELTA= 12°27'43"LT
D = 2°02'47"
R = 2800.00 FT.
T = 305.71 FT.
L = 609.00 FT.
E = 16.64 FT.

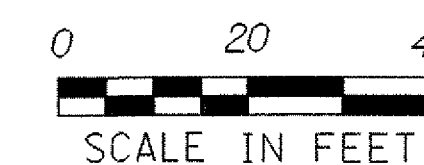


STRUCTURE NO.	CONSTRUCTION & STATION	COMMENTS (SEE NOTE 3)
100	961+61 RT.	CATCH BASIN, TYPE "A" GRATE, RIM 509.06 CONNECT TO EXIST. 36" ACC WITH 36" PCCSP STUB CONNECT TO EXIST. 36" RCP WITH 36" RCP STUB CONNECT TO EXIST. 6" UNDERDRAIN

NOTES

- ALL EXISTING STORM DRAINAGE PIPES AND STRUCTURES ARE SHOWN BASED ON PREVIOUS DESIGN PLANS. NO AS-BUILT INFORMATION WAS AVAILABLE, AND NO SURVEY WAS POSSIBLE DUE TO THEIR LOCATIONS UNDER THE EXISTING CONCRETE MEDIAN BARRIER.
- FOR DETAILS OF LANDSCAPING BEDS, PLANT LISTS AND PLANTING DETAILS, SEE LANDSCAPING DETAIL SHEETS. BEDS ARE DESIGNED AS A 100' TYPICAL PATTERN WHICH WILL BE REPEATED FOR LONGER BEDS.
- TYPE OF STUB REQUIRED TO CONNECT TO EXISTING STORM DRAIN PIPE IS ASSUMED FOR ALL LOCATIONS. THERE MAY BE LOCATIONS WHERE A STUB IS NOT REQUIRED. STUBS WILL BE USED AS DIRECTED BY THE ENGINEER.
- FOR DETAILS OF UNDERDRAIN CONNECTION AND CLEAN OUT SEE MISC. DRAINAGE DETAILS 2.
- ALL REHABING OF DI, CB, OR MH CLASS I ARE LOCATED BETWEEN I-89 NORTHBOUND AND U.S. 2.

LEGEND	
CULVERT LINING	
LANDSCAPING BED	
CONCRETE MEDIAN BARRIER	
DROP INLET	
CATCH BASIN	



STA 960+00 - STA 965+50

PROJECT NAME: WATERBURY - BOLTON	PLOT DATE: 29-MAR-2006
PROJECT NUMBER: IM 089 - 2(37)	DRAWN BY: J. L. SCHULTZ
FILE NAME: d05a110bdr.dgn	CHECKED BY:
PROJECT LEADER: A. J. BOMBARDIER	SHEET 11 OF 80
DESIGNED BY: J. L. SCHULTZ	
LAYOUT SHEET 2	