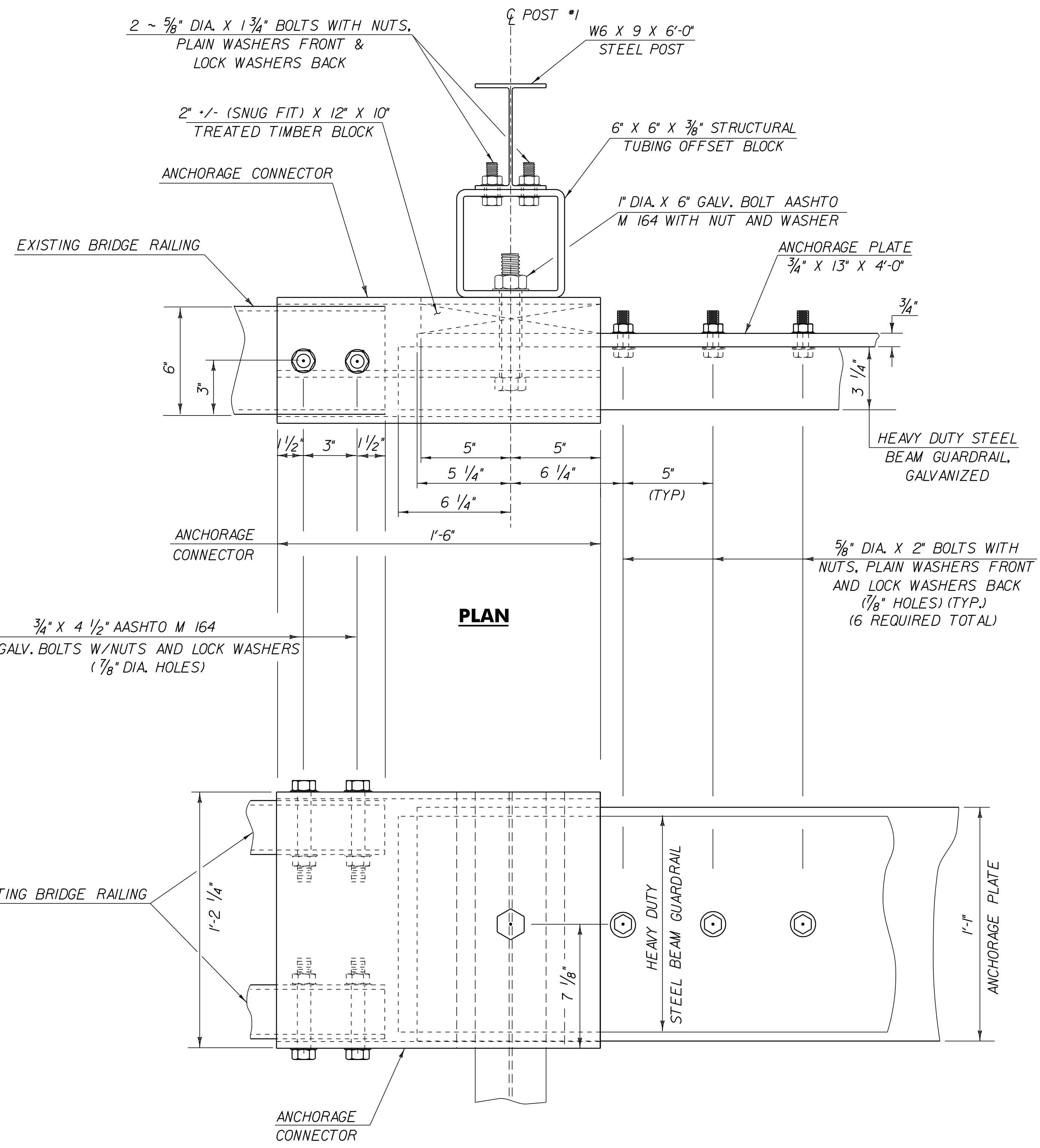


APPROACH RAIL NOTES:

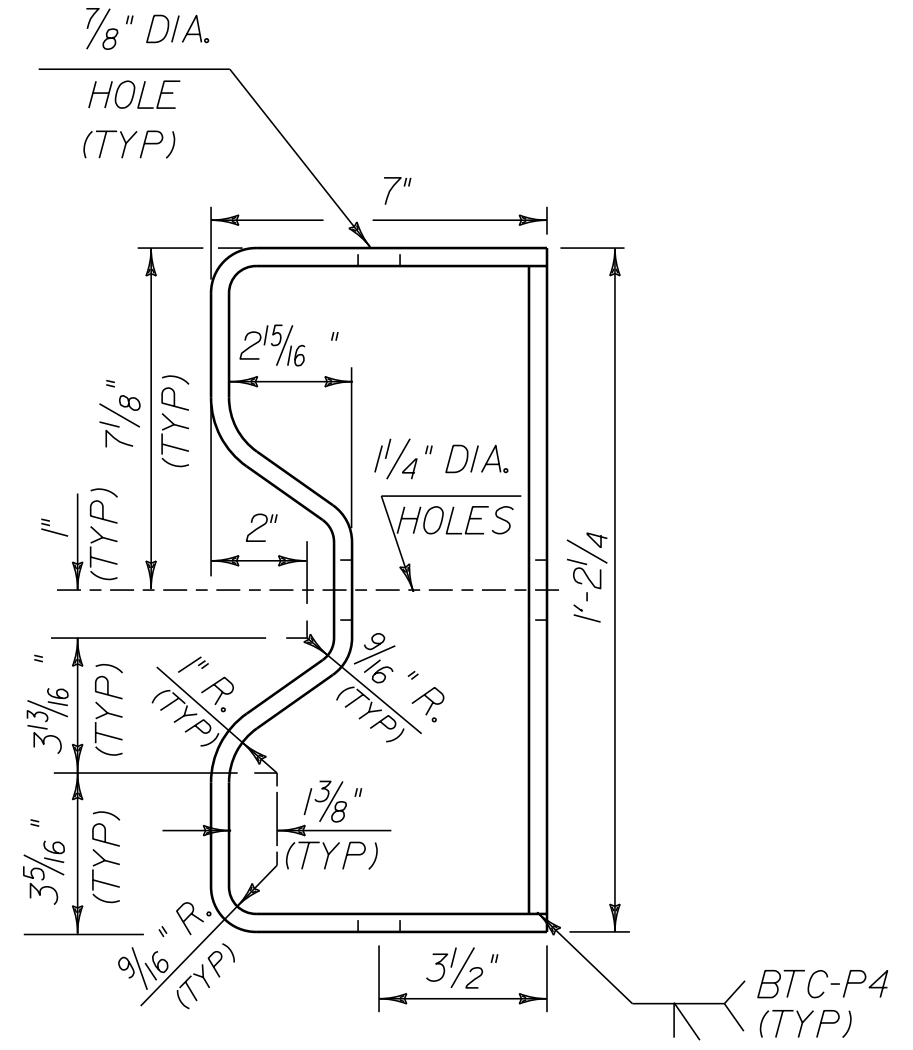
1. REFER TO STANDARD G-1 FOR ADDITIONAL RAIL DETAILS.
2. ALL POSTS FOR HEAVY DUTY STEEL BEAM GUARDRAIL SHALL BE STEEL, IN ACCORDANCE WITH SECTION 728 "GUARD RAIL, GUIDE POST AND BARRIERS" UNLESS OTHERWISE SPECIFIED IN THE CONTRACT.
3. APPROACH RAIL SPLICES SHALL LAP IN DIRECTION OF TRAFFIC FLOW.
4. ANCHORAGE CONNECTOR AND ANCHORAGE PLATE SHALL BE AASHTO M 270, GRADE 250 GALVANIZED TO AASHTO M III AFTER FABRICATION.
5. ALL BOLTS, NUTS AND WASHERS SHALL BE AASHTO M 164 GALVANIZED TO AASHTO M 232 AFTER FABRICATION.
6. STRUCTURAL TUBING OFFSET BLOCK SHALL BE AASHTO M 183 GALVANIZED TO AASHTO M III AFTER FABRICATION.
7. APPROACH RAILING SHALL BE HEAVY DUTY STEEL BEAM FOR 50'-0" FROM THE CL OF POST #1 FOR TYPE I AND 12'-6" FROM THE CL OF POST #1 FOR TYPE II.
8. ALLOWABLE DIMENSIONAL TOLERANCE FOR BENT SECTIONS IS +/- 1/16" OF AN INCH.
9. THE UNIT PRICES BID FOR EITHER TYPE OF GUARDRAIL APPROACH SECTION SHALL INCLUDE ANCHORAGE CONNECTOR, ANCHORAGE PLATE, HEAVY DUTY STEEL BEAM GUARDRAIL, POSTS, OFFSET BLOCKS, BLOCKING, BOLTS, AND ALL NECESSARY HARDWARE.



PLAN

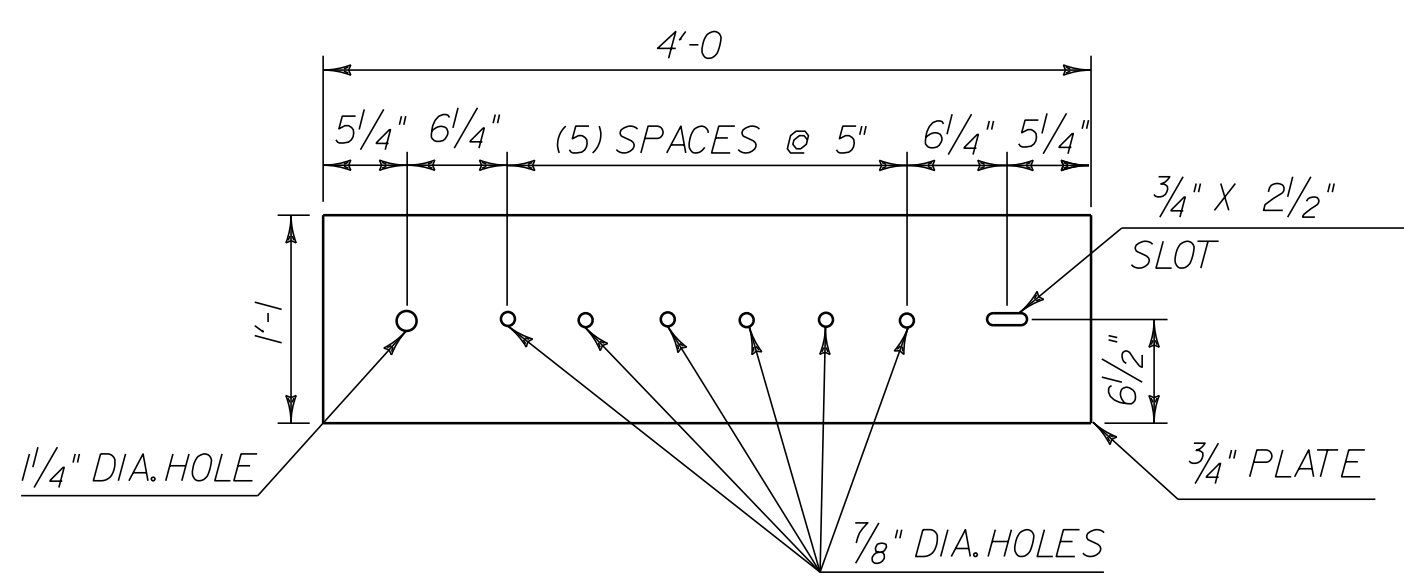
ELEVATION

CONNECTION/TRANSITION DETAILS AT POST NO. 1

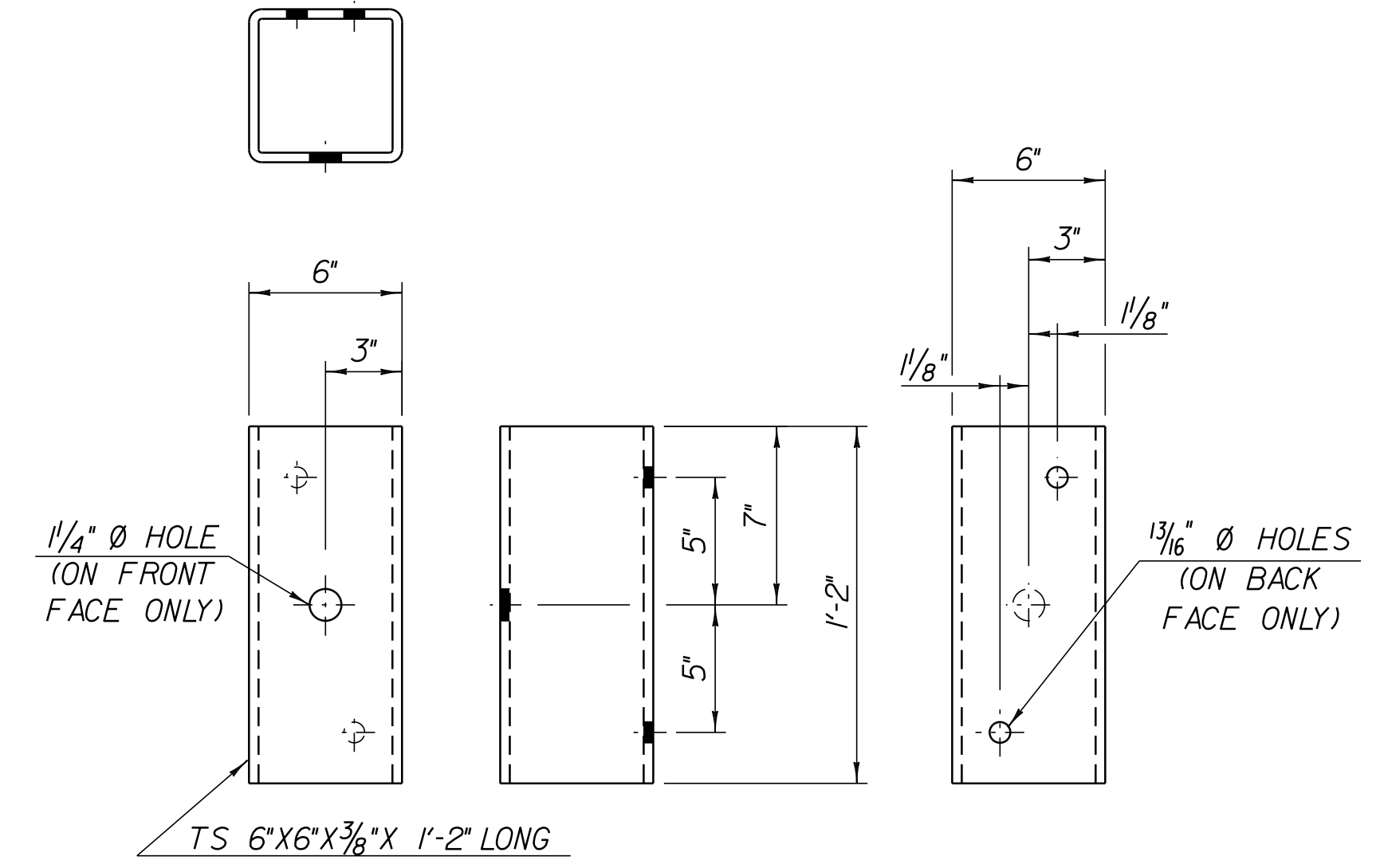


ANCHORAGE CONNECTOR DETAIL

(SEE NOTE 8)



ANCHOR PLATE DETAIL



STRUCTURAL TUBING OFFSET BLOCK DETAILS

(OCCURS AT POST #1 WHEN USING APPROACH RAIL UTILIZING STEEL POSTS.)

DETAILS ARE NOT TO SCALE

GUARDRAIL APPROACH SECTION DETAIL SHEET 2

PROJECT NAME:	SO. BURLINGTON - COLCHESTER	
PROJECT NUMBER:	IM 089-3(60)	
FILE NAME:	p05a012.dgn	PLOT DATE: \$\$\$\$\$\$DATE\$\$\$
PROJECT LEADER:	EPD	DRAWN BY: SANZ
DESIGNED BY:	JDA	CHECKED BY: EPD
PLOT FILE:	p05a012gasds2.i	SHEET 45 OF 91