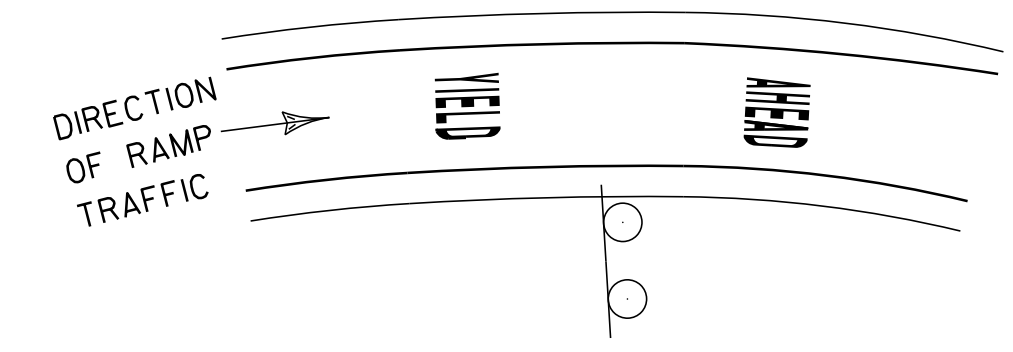
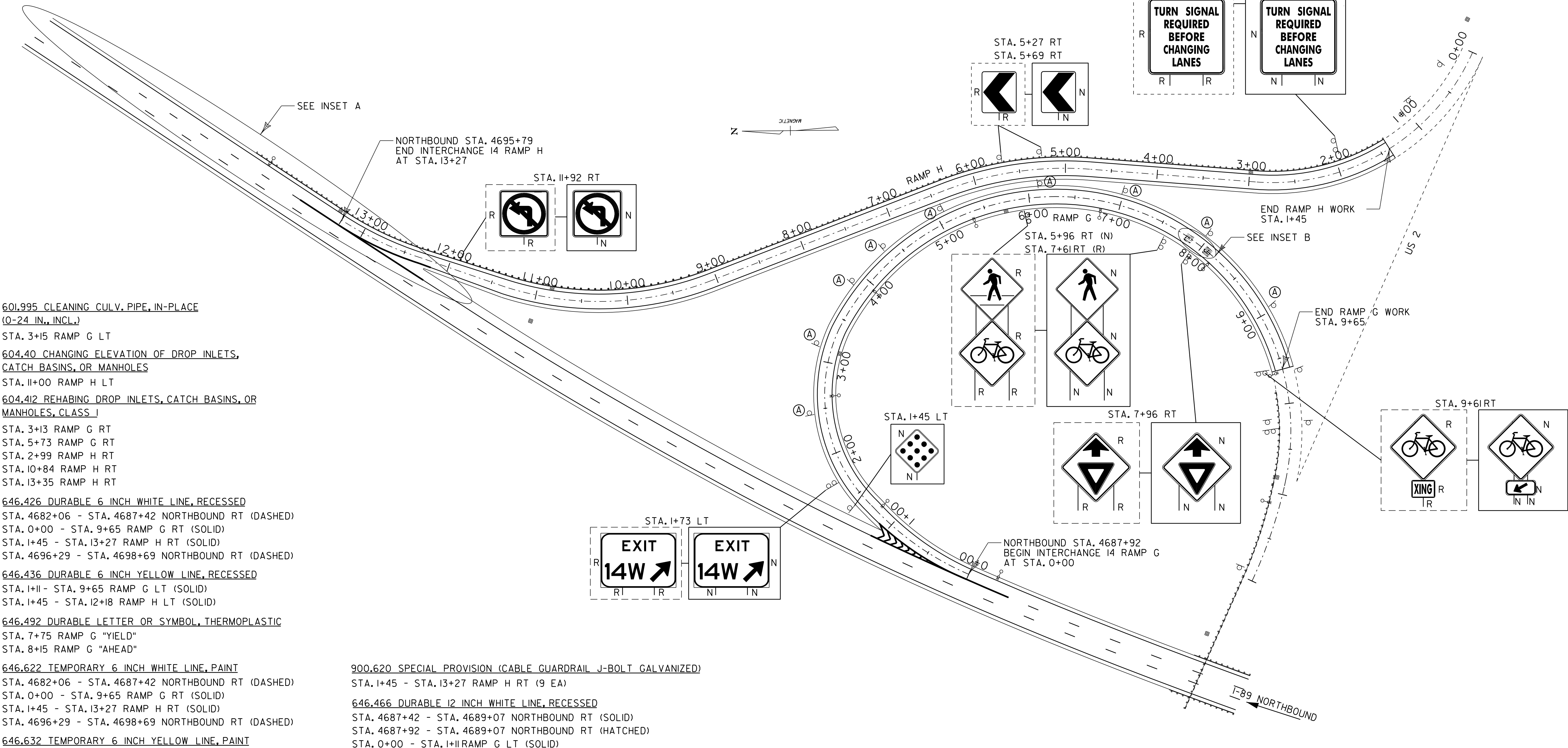


INSET A - GORE DETAIL AT EXIT 14 RAMP H



INSET B - PAVEMENT MARKING DETAIL



EXIT 14 RAMPS G & H

- 601.995 CLEANING CULV. PIPE, IN-PLACE (0-24 IN., INCL.)
- STA. 3+15 RAMP G LT
- 604.40 CHANGING ELEVATION OF DROP INLETS, CATCH BASINS, OR MANHOLES
- STA. 11+00 RAMP H LT
- 604.412 REHABING DROP INLETS, CATCH BASINS, OR MANHOLES, CLASS I
- STA. 3+13 RAMP G RT
- STA. 5+73 RAMP G RT
- STA. 2+99 RAMP H RT
- STA. 10+84 RAMP H RT
- STA. 13+35 RAMP H RT
- 646.426 DURABLE 6 INCH WHITE LINE, RECESSED
- STA. 4682+06 - STA. 4687+42 NORTHBOUND RT (DASHED)
- STA. 0+00 - STA. 9+65 RAMP G RT (SOLID)
- STA. 1+45 - STA. 13+27 RAMP H RT (SOLID)
- STA. 4696+29 - STA. 4698+69 NORTHBOUND RT (DASHED)
- 646.436 DURABLE 6 INCH YELLOW LINE, RECESSED
- STA. 1+11 - STA. 9+65 RAMP G LT (SOLID)
- STA. 1+45 - STA. 12+18 RAMP H LT (SOLID)
- 646.492 DURABLE LETTER OR SYMBOL, THERMOPLASTIC
- STA. 7+75 RAMP G "YIELD"
- STA. 8+15 RAMP G "AHEAD"
- 646.622 TEMPORARY 6 INCH WHITE LINE, PAINT
- STA. 4682+06 - STA. 4687+42 NORTHBOUND RT (DASHED)
- STA. 0+00 - STA. 9+65 RAMP G RT (SOLID)
- STA. 1+45 - STA. 13+27 RAMP H RT (SOLID)
- STA. 4696+29 - STA. 4698+69 NORTHBOUND RT (DASHED)
- 646.632 TEMPORARY 6 INCH YELLOW LINE, PAINT
- STA. 1+11 - STA. 9+65 RAMP G LT (SOLID)
- STA. 1+45 - STA. 12+18 RAMP H LT (SOLID)
- 646.662 TEMPORARY 12 INCH WHITE LINE, PAINT
- STA. 4687+42 - STA. 4689+07 NORTHBOUND RT (SOLID)
- STA. 4687+92 - STA. 4689+07 NORTHBOUND RT (HATCHED)
- STA. 0+00 - STA. 1+11 RAMP G LT (SOLID)
- STA. 12+18 - STA. 13+27 RAMP H LT (SOLID)
- STA. 4694+69 - STA. 4696+29 NORTHBOUND RT (SOLID)
- 646.692 TEMPORARY LETTER OR SYMBOL, PAINT
- STA. 7+75 RAMP G "YIELD"
- STA. 8+15 RAMP G "AHEAD"
- 675.50 REMOVING SIGNS AS SHOWN - 20

- 900.620 SPECIAL PROVISION (CABLE GUARDRAIL J-BOLT GALVANIZED)
- STA. 1+45 - STA. 13+27 RAMP H RT (9 EA)
- 646.466 DURABLE 12 INCH WHITE LINE, RECESSED
- STA. 4687+42 - STA. 4689+07 NORTHBOUND RT (SOLID)
- STA. 4687+92 - STA. 4689+07 NORTHBOUND RT (HATCHED)
- STA. 0+00 - STA. 1+11 RAMP G LT (SOLID)
- STA. 12+18 - STA. 13+27 RAMP H LT (SOLID)
- STA. 4694+69 - STA. 4696+29 NORTHBOUND RT (SOLID)

RAMP RADII INFORMATION

RAMP	RADII, FT	DESCRIPTION
G	302	NEAR I-89 END
	151	ALONG MIDDLE OF RAMP
	249	NEAR US2 END
H	521	NEAR I-89 END
	302	ALONG MIDDLE OF RAMP
	521	NEAR US2 END

NOTES:

1. ONLY SIGNS BEING REMOVED/ REPLACED OR NEW SIGNS ARE SHOWN, SIGNS BEING RETAINED ARE NOT SHOWN
2. SINKHOLES EXIST ON THE RIGHT SIDE OF RAMP G SOUTH OF THE RAMP (RIGHT SIDE OF I-89) TO APPROXIMATE STA. 4+00 ALONG RAMP G. IN ADDITION, AN EROSION PROBLEM EXISTS IN THE AREA BETWEEN RAMP G, RAMP H, AND I-89. PLACE FILL IN THESE AREAS USING WASTED DITCHING MATERIAL. IF NEEDED, EARTH BORROW MAY BE USED IN THESE AREAS. AN ESTIMATED QUANTITY OF 50 CUBIC YARDS HAS BEEN INCLUDED IN THE QUANTITIES TO BE USED AS NEEDED IN THESE AREAS. FILL SHALL BE PLACED IN THESE AREAS SUCH THAT POSITIVE DRAINAGE IS ACHIEVED.

NOTE:
ALL CHEVRONS APPEARING ON RAMPS SHALL BE REMOVED AND REPLACED. PLACEMENT OF NEW CHEVRONS SHALL BE IN ACCORDANCE WITH VTRANS STANDARD DRAWING E-126.

LEGEND

- N = NEW
- R = REMOVE
- B-B = BACK TO BACK
- RET = RETAIN
- REFER TO STANDARDS E-191 & E-192 FOR ADDITIONAL DETAILS.

RAMP DETAIL SHEET 4 INTERCHANGE #14

PROJECT NAME: SO. BURLINGTON - COLCHESTER	
PROJECT NUMBER: IM 089-3(60)	
FILE NAME: p05a012.dgn	PLOT DATE: \$\$\$\$\$\$DATE\$\$\$
PROJECT LEADER: EPD	DRAWN BY: SJB
DESIGNED BY: JDA	CHECKED BY: EPD
PLOT FILE: p05a012rds15.dgn	SHEET 39 OF 91