

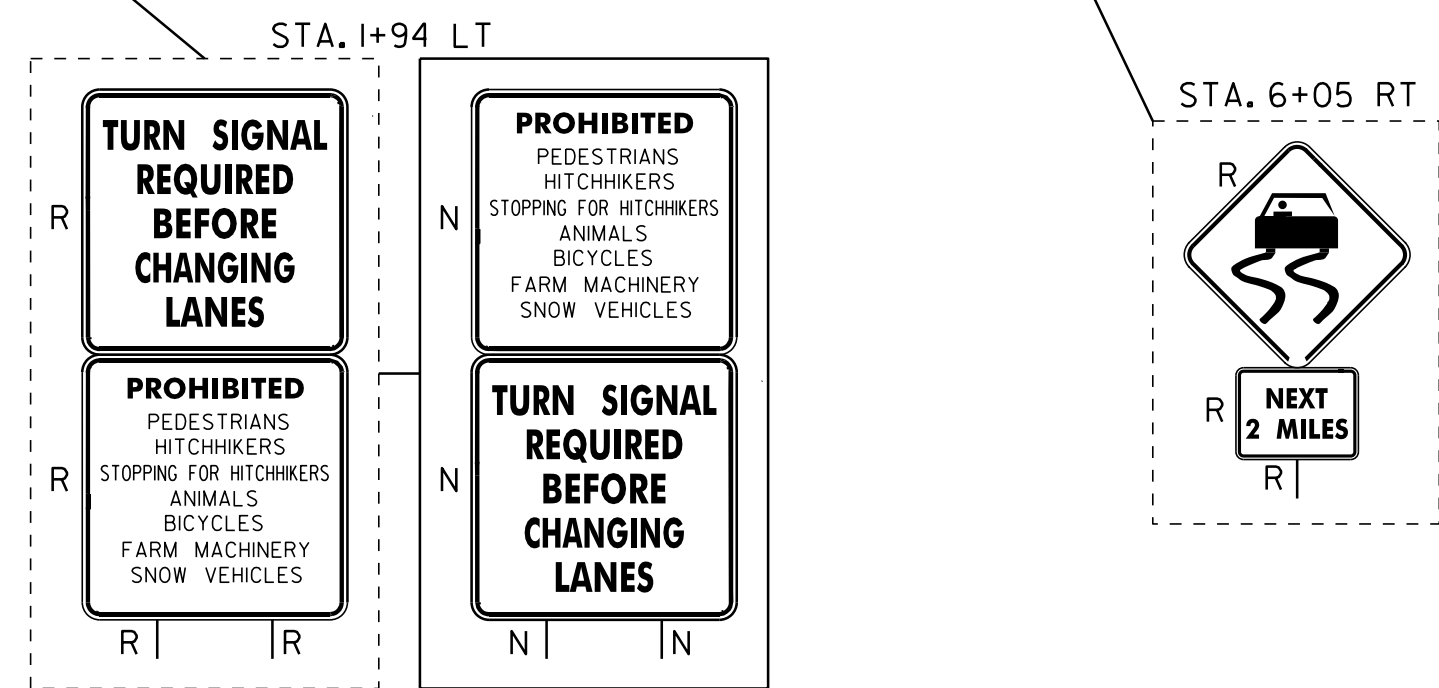
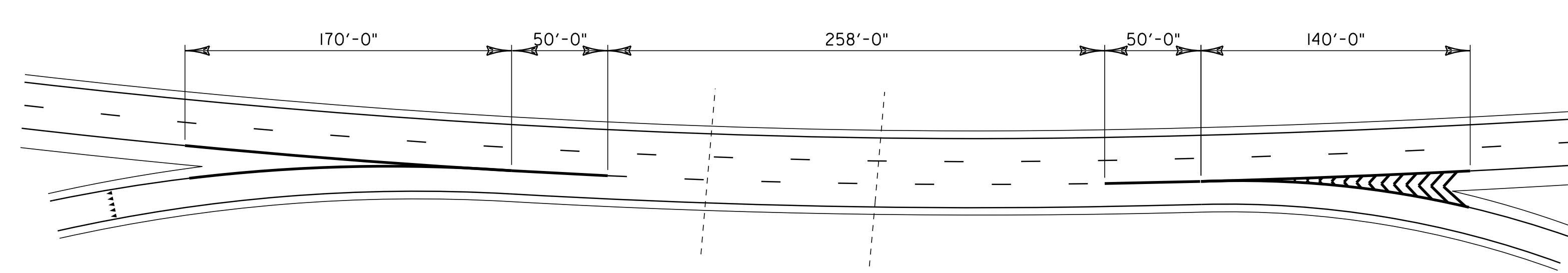
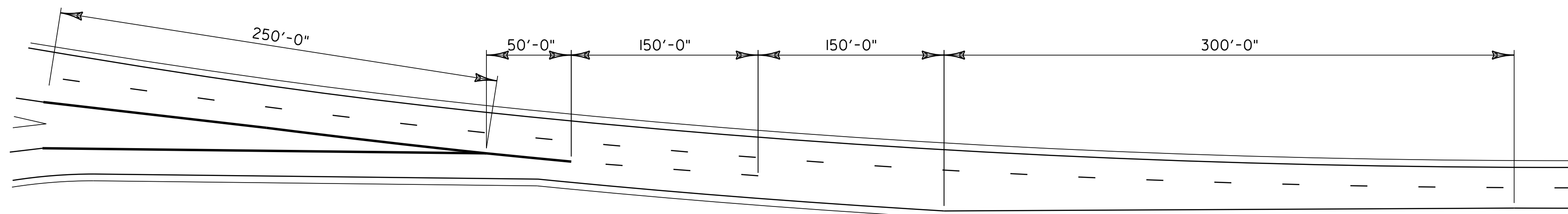
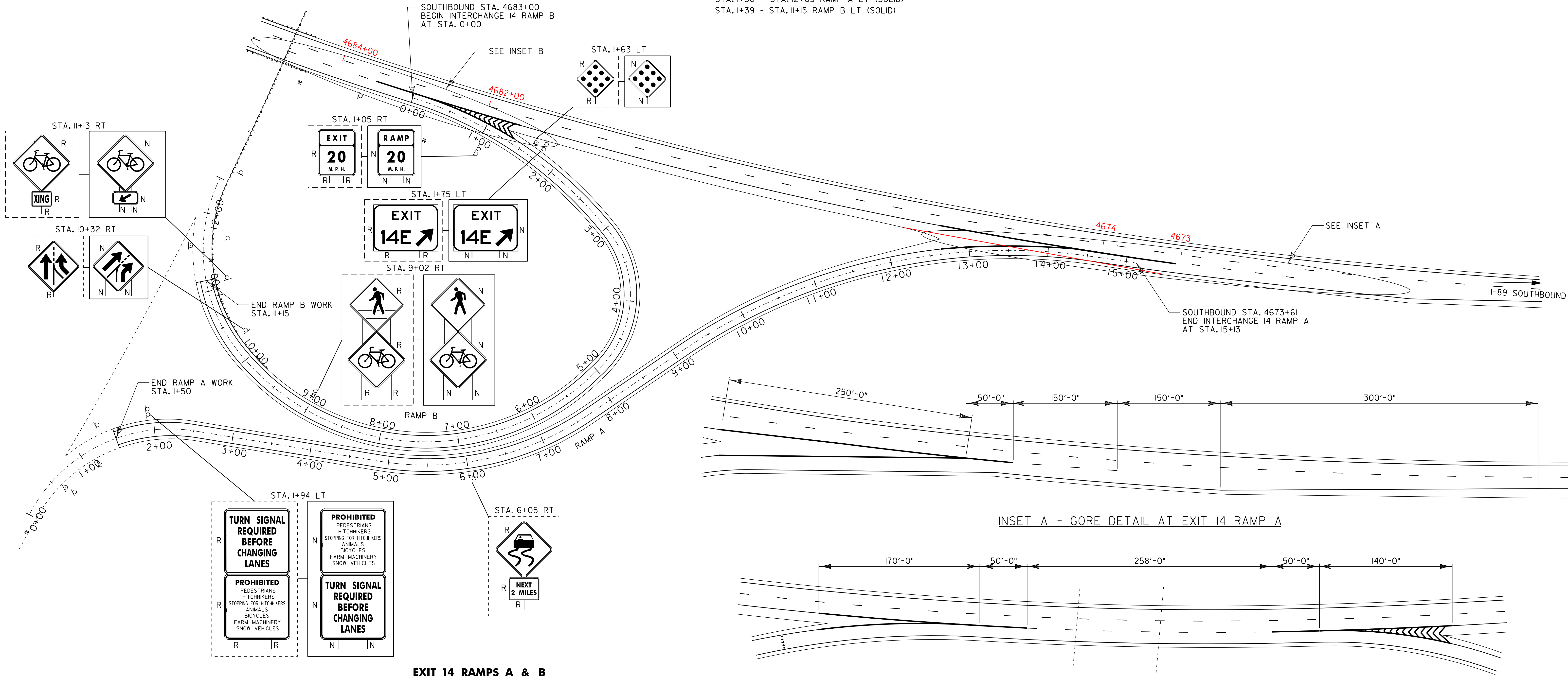
646.622 TEMPORARY 6 INCH WHITE LINE, PAINT
 STA. I+50 - STA. I5+13 RAMP A RT (SOLID)
 STA. 467I+6I - STA. 4673+II SOUTHBOUND LT (DASHED)
 STA. 0+00 - STA. II+I5 RAMP B RT (SOLID)
 STA. 4683+5I - STA. 4686+09 SOUTHBOUND LT (DASHED)
 646.632 TEMPORARY 6 INCH YELLOW LINE, PAINT
 STA. I+50 - STA. I2+65 RAMP A LT (SOLID)
 STA. I+39 - STA. II+I5 RAMP B LT (SOLID)

646.466 DURABLE 12 INCH WHITE LINE, RECESSED
 STA. I+50 - STA. I5+13 RAMP A RT (SOLID)
 STA. 467I+6I - STA. 4673+II SOUTHBOUND LT (DASHED)
 STA. 0+00 - STA. II+I5 RAMP B RT (SOLID)
 STA. 4683+5I - STA. 4686+09 SOUTHBOUND LT (DASHED)
 STA. 4673+II - STA. 4676+II SOUTHBOUND LT (SOLID)
 STA. I2+65 - STA. I5+13 RAMP A LT (SOLID)
 STA. 468I+6I - STA. 4683+5I SOUTHBOUND LT (SOLID)
 STA. 468I+6I - STA. 4683+0I SOUTHBOUND LT (HATCHED)
 STA. 0+00 - STA. I+39 RAMP B LT (SOLID)

646.662 TEMPORARY 12 INCH WHITE LINE, PAINT
 STA. 4673+II - STA. 4676+II SOUTHBOUND LT (SOLID)
 STA. I2+65 - STA. I5+13 RAMP A LT (SOLID)
 STA. 468I+6I - STA. 4683+5I SOUTHBOUND LT (SOLID)
 STA. 468I+6I - STA. 4683+0I SOUTHBOUND LT (HATCHED)
 STA. 0+00 - STA. I+39 RAMP B LT (SOLID)

675.50 REMOVING SIGNS
 AS SHOWN - I2

646.436 DURABLE 6 INCH YELLOW LINE, RECESSED
 STA. I+50 - STA. I2+65 RAMP A LT (SOLID)
 STA. I+39 - STA. II+I5 RAMP B LT (SOLID)



EXIT 14 RAMPS A & B

RAMP RADII INFORMATION

RAMP	RADII, FT	DESCRIPTION
A	521	NEAR I-89 END
	358	ALONG MIDDLE OF RAMP
	249	NEAR US2 END
B	302	NEAR I-89 END
	151	ALONG MIDDLE OF RAMP
	302	ALONG MIDDLE OF RAMP
	212	NEAR US2 END

NOTE:

I. ONLY SIGNS BEING REMOVED/REPLACED OR NEW SIGNS ARE SHOWN. SIGNS BEING RETAINED ARE NOT SHOWN.

LEGEND

N = NEW
 R = REMOVE
 B-B = BACK TO BACK
 RET = RETAIN
 REFER TO STANDARDS E-191 & E-192 FOR ADDITIONAL DETAILS.

RAMP DETAIL SHEET 1 INTERCHANGE #14

PROJECT NAME:	SO. BURLINGTON - COLCHESTER	
PROJECT NUMBER:	IM 089-3(60)	
FILE NAME:	p05a012.dgn	PLOT DATE: \$\$\$\$\$\$DATE\$\$\$
PROJECT LEADER:	EPD	DRAWN BY: SJB
DESIGNED BY:	JDA	CHECKED BY: EPD
PLOT FILE:	p05a012rds12.dgn	SHEET 36 OF 91