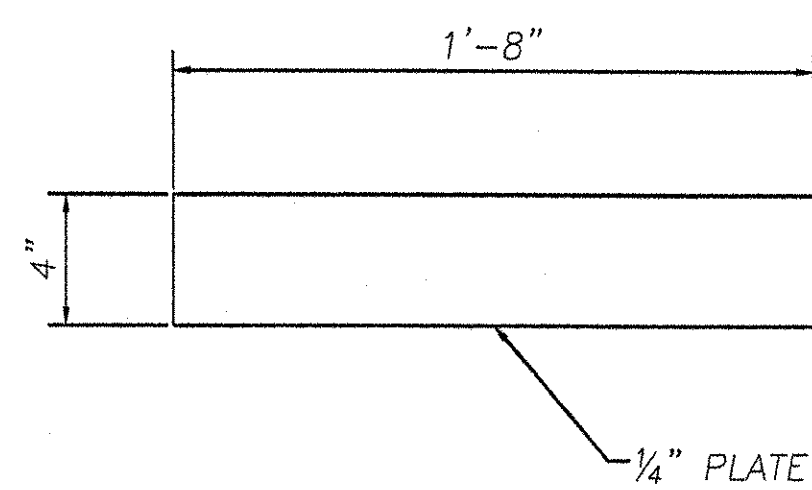
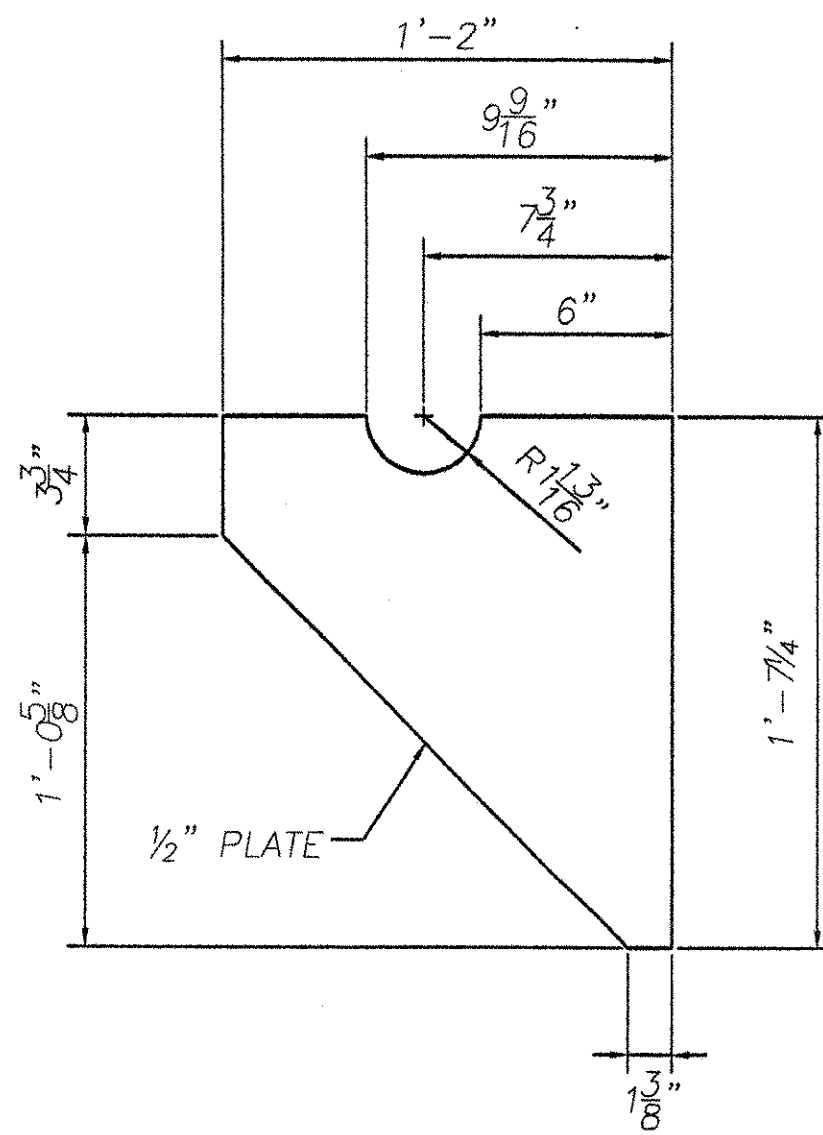


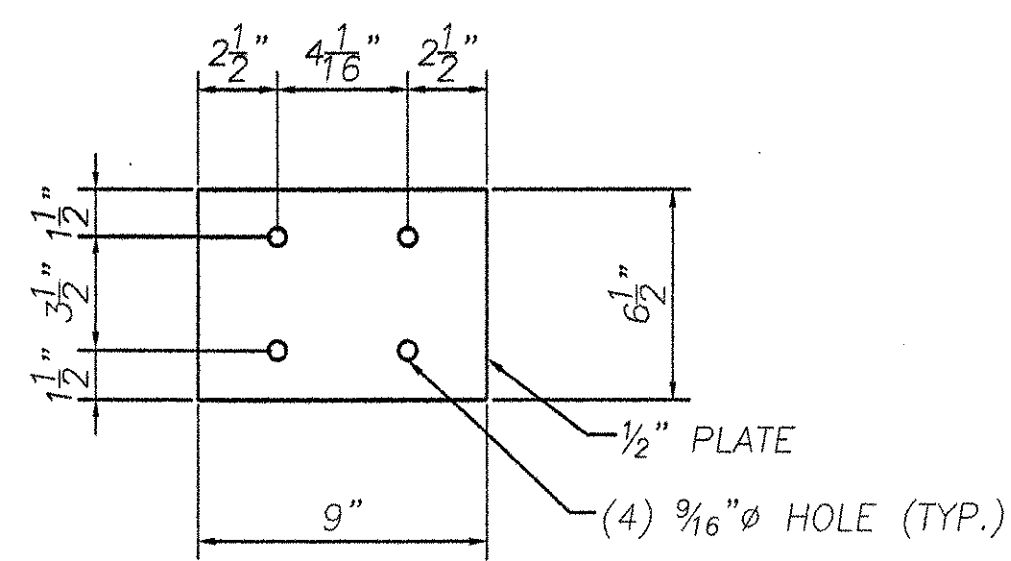
MK-p1



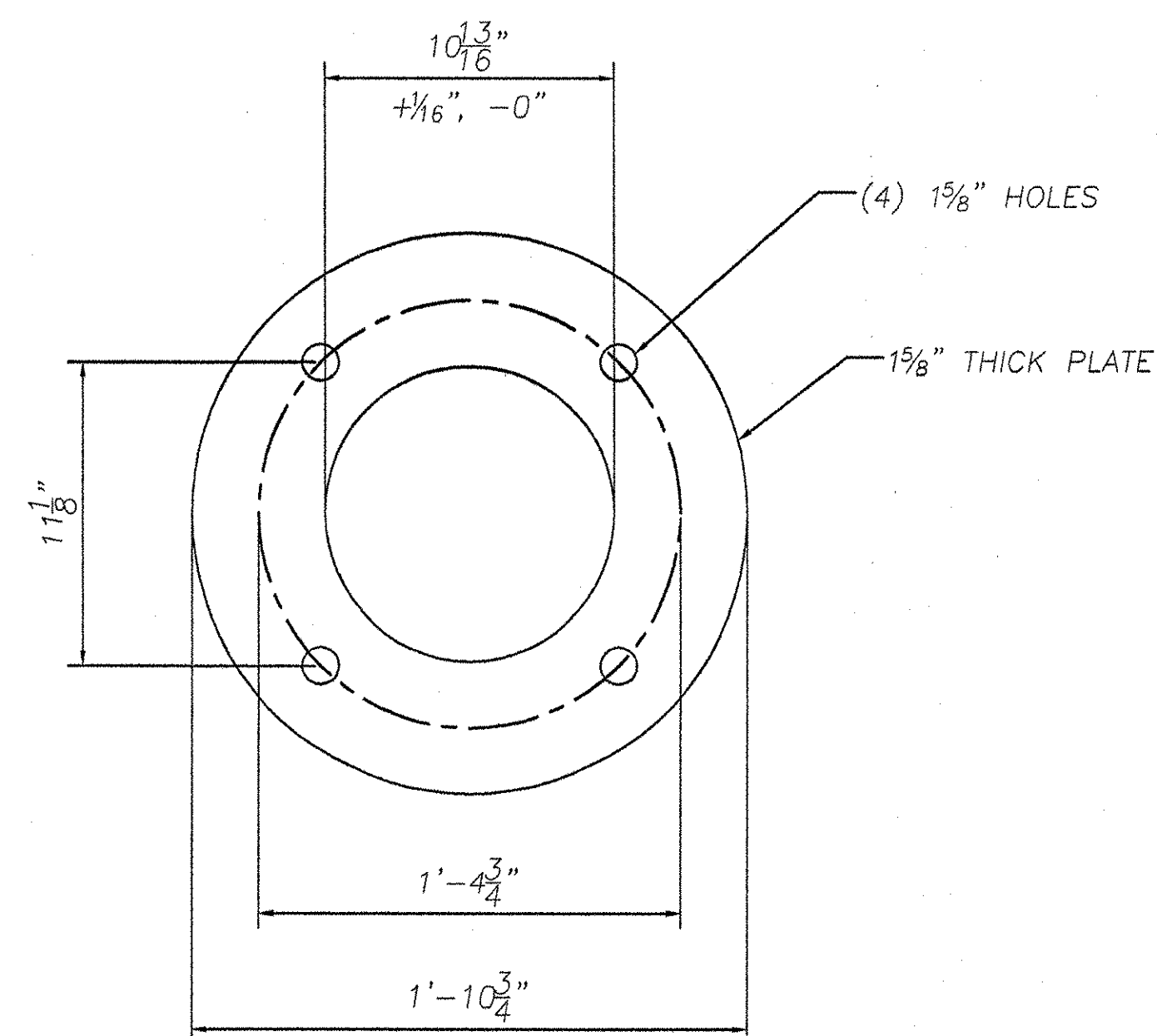
MK-p2



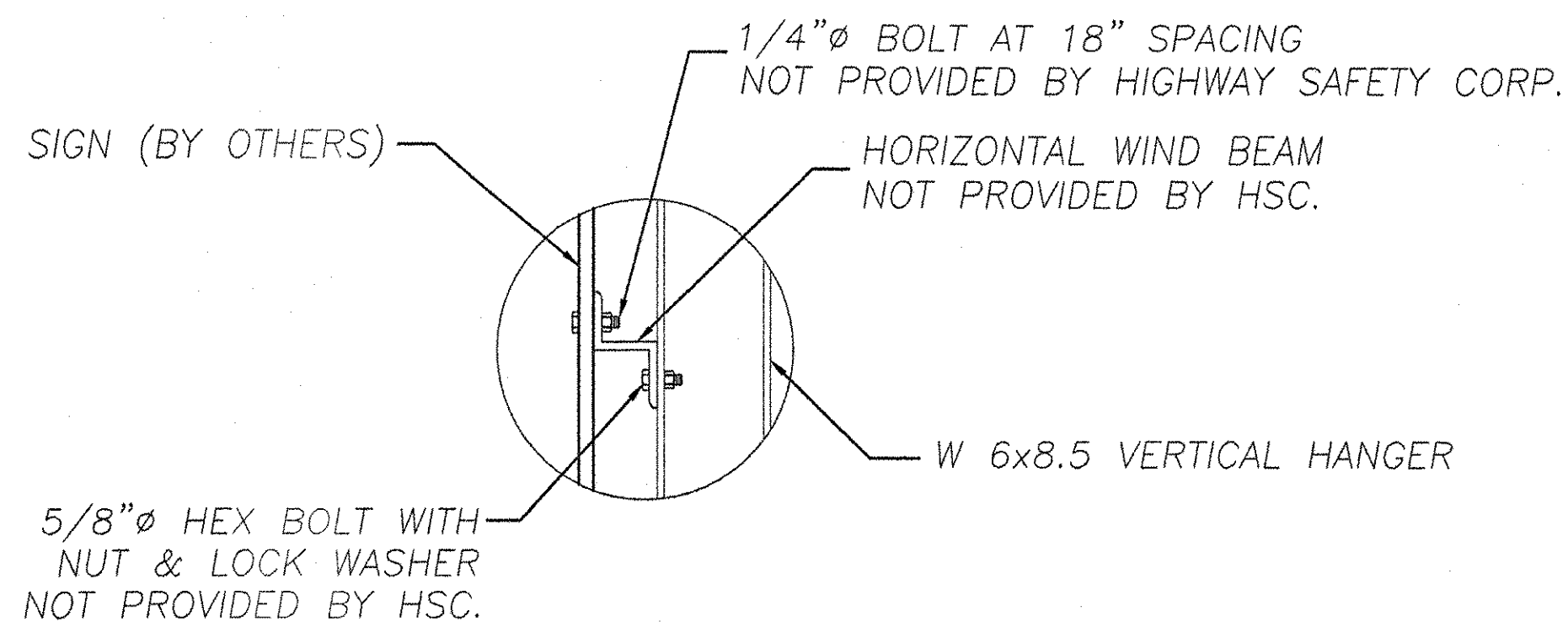
MK-p3



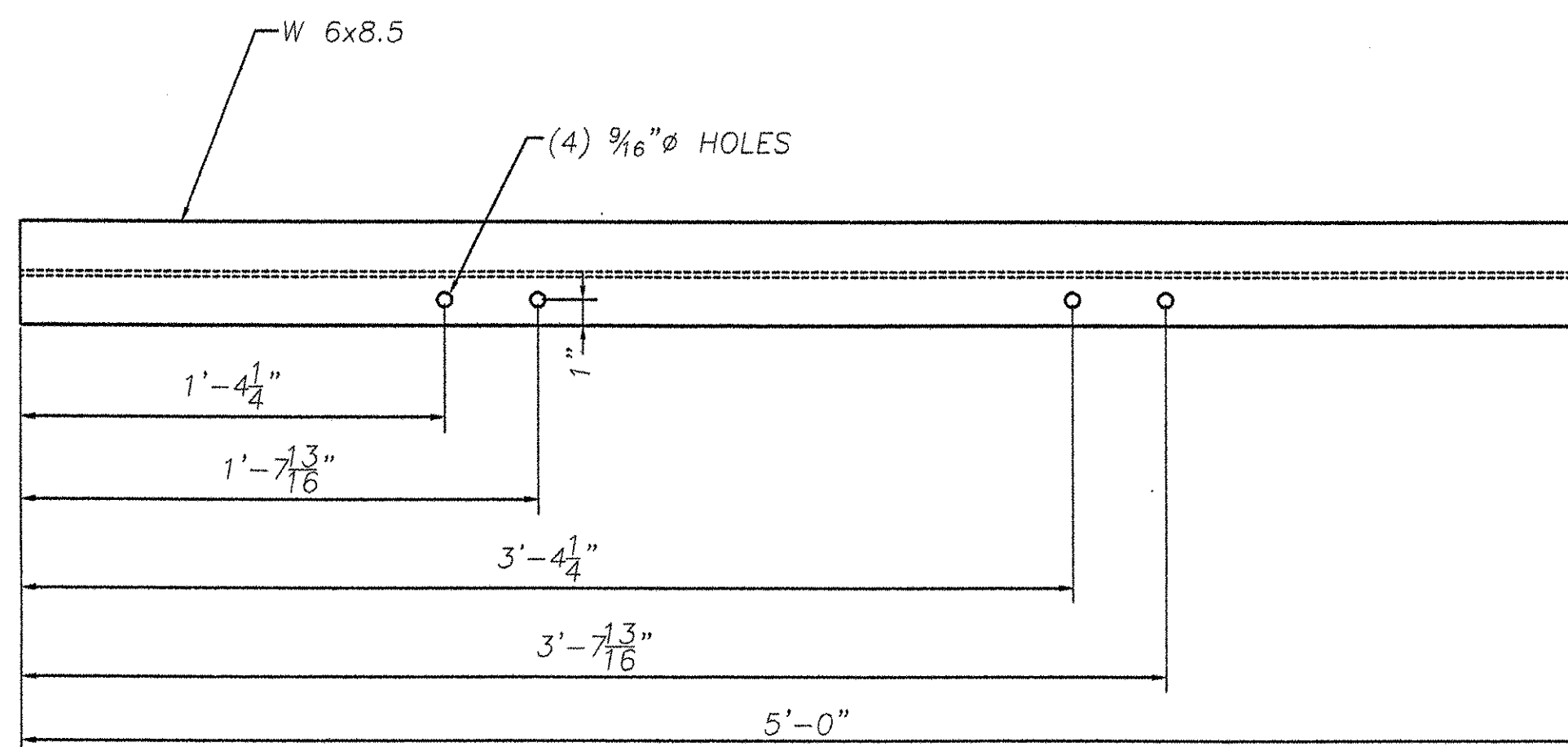
MK-p4



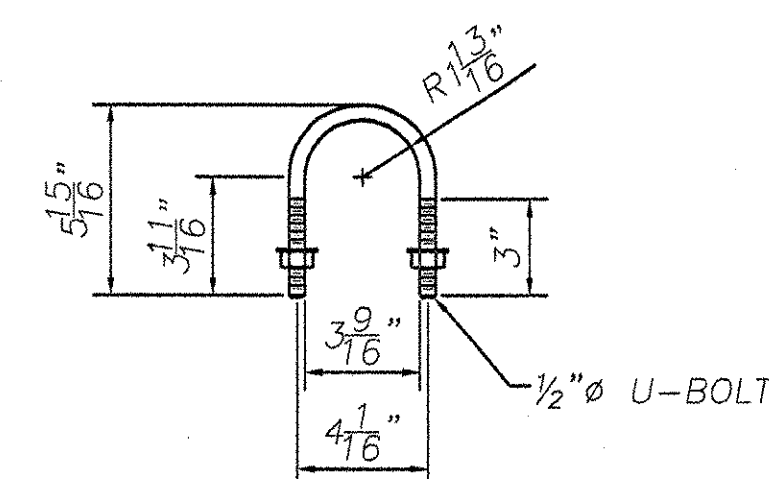
MK-bp



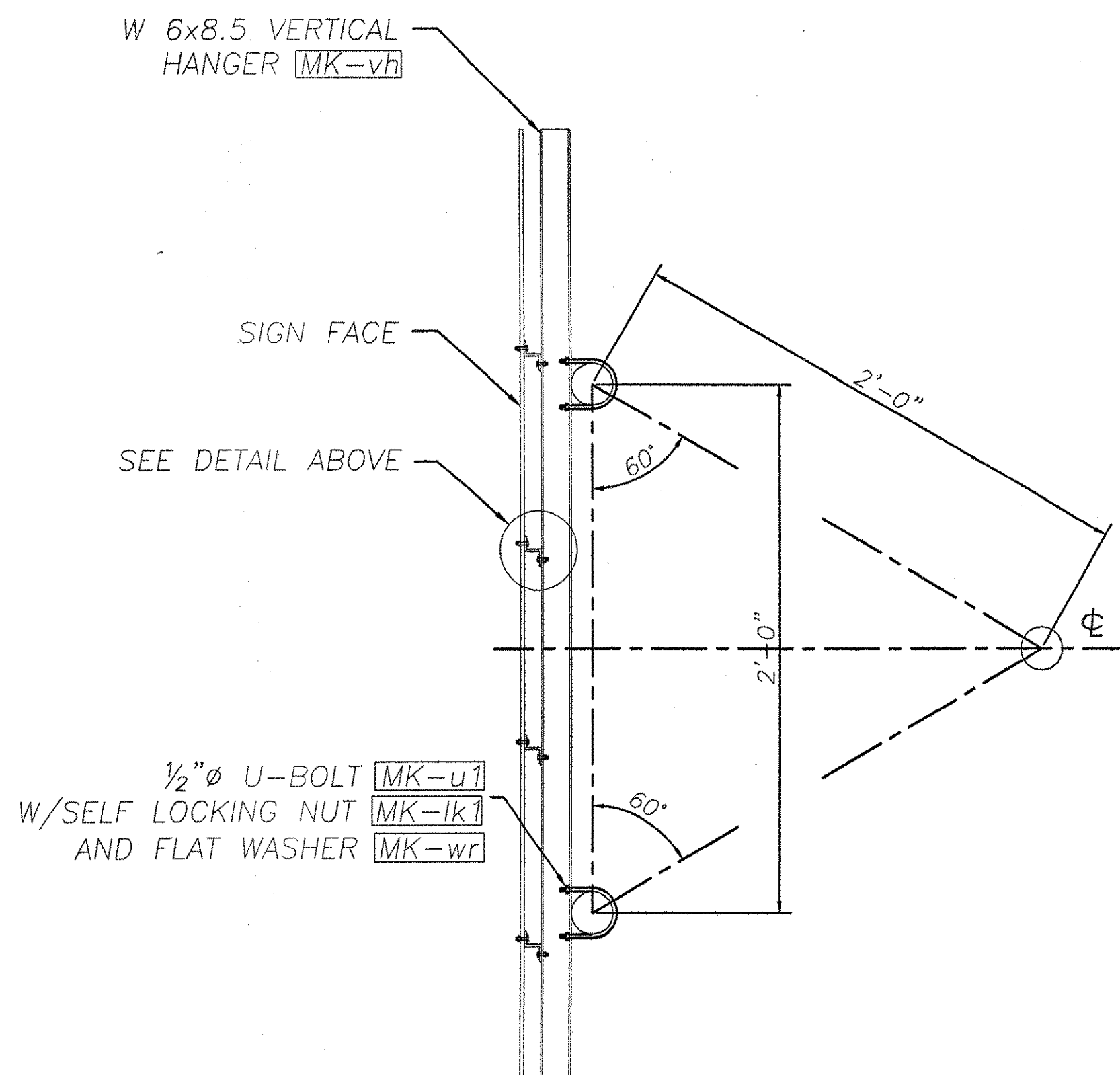
SIGN ATTACHMENT DETAIL



MK-vh

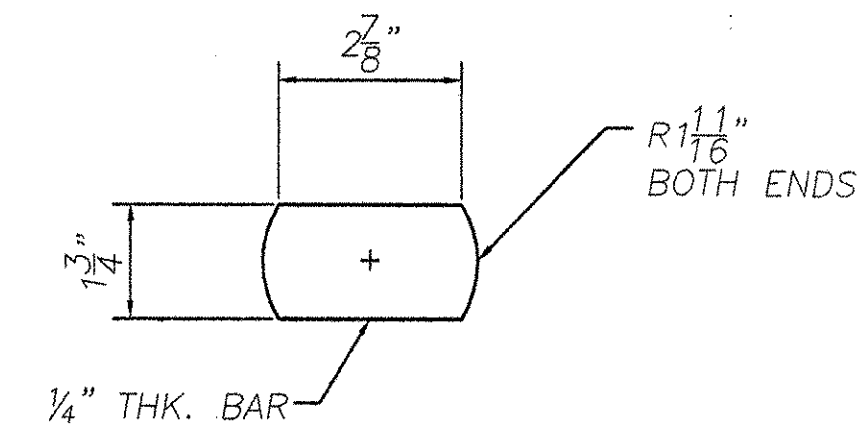


MK-u1



SIGN MOUNTING DETAIL

VERTICAL HANGER BEAMS & U-BOLTS INCLUDED



MK-br1



REVISIONS		
No.	Remarks	Date
0	Initial submittal	

Flosco

HIGHWAY SAFETY CORP.
GLASTONBURY, CT

TRI-CHORD SIGN STRUCTURE
I-89 EXIT 12 SB OFF RAMP
CHITTENDEN COUNTY, VERMONT
PROJECT No. IM 089-2(35)

1515

GENERAL CONTRACTOR: F.R. LAFAYETTE

DATE: 7/8/05

SCALE: NTS

REVISION: 0

SHEET NO: 6 of 8