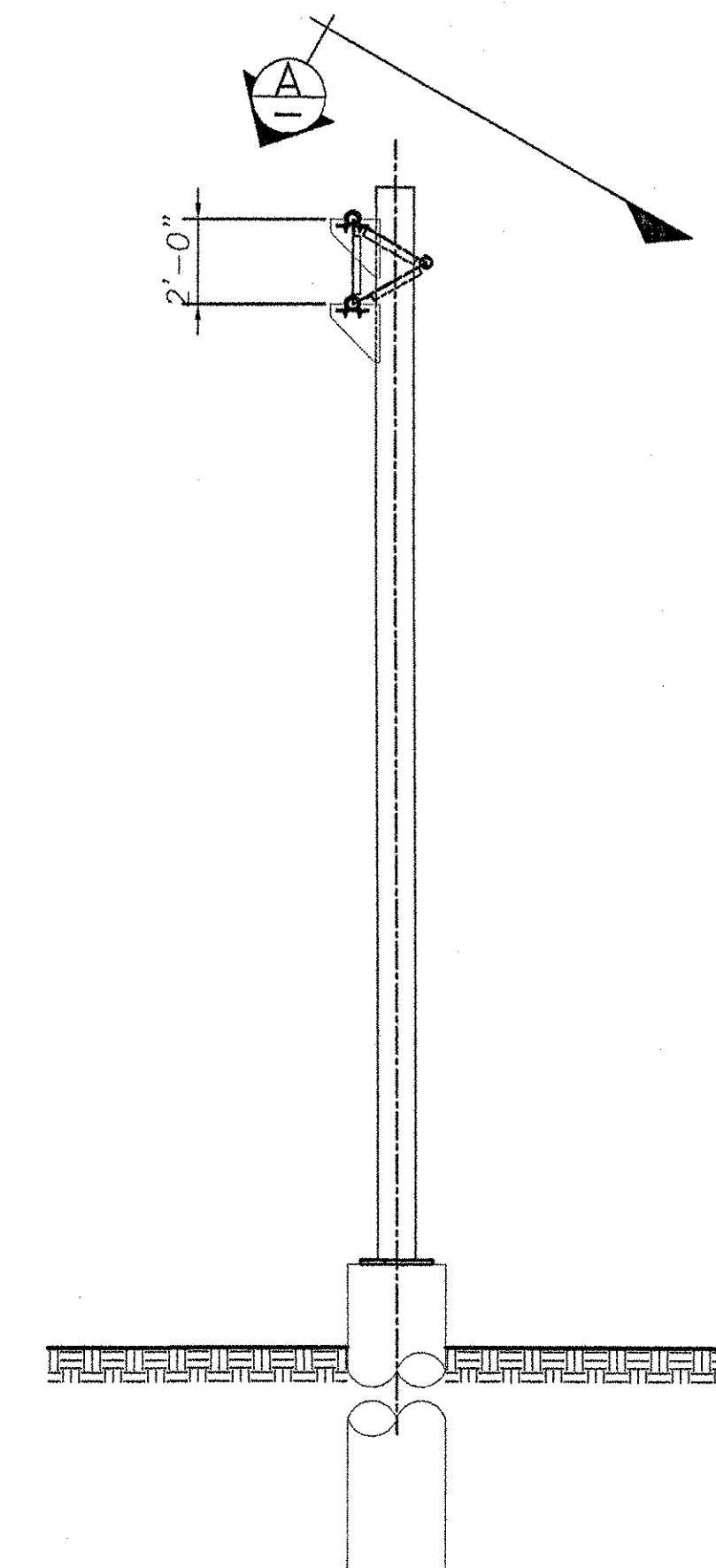
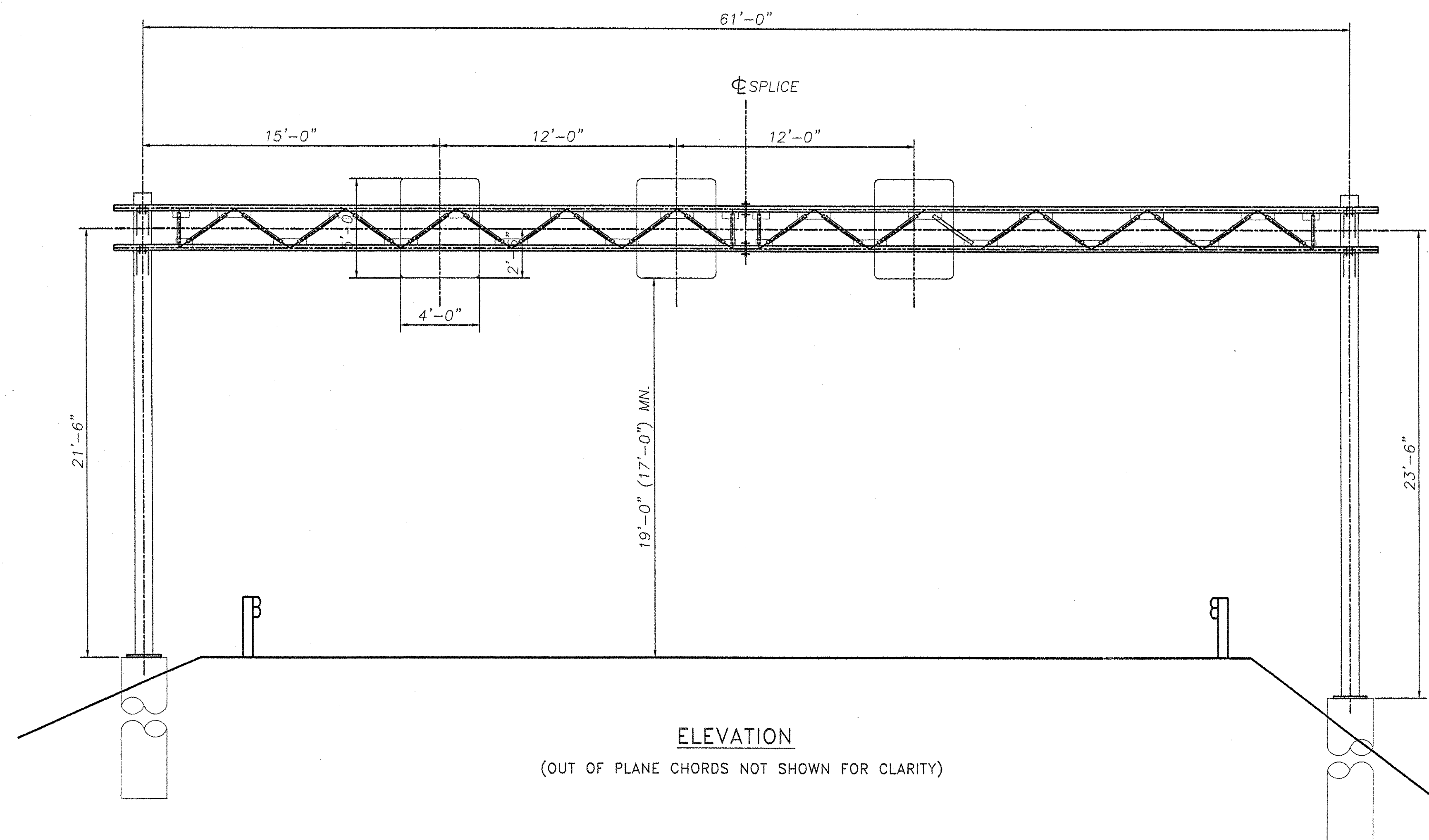


CAMBER DIAGRAM

NOTE:

CAMBER WILL BE ACHIEVED BY SHORTENING LOWER CHORD PIPES BY AN AMOUNT SUCH THAT POSITIVE UPWARD DEFLECTION IS PRODUCED WHEN TRUSSES ARE BROUGHT TOGETHER AT SPLICES.



ELEVATION

(OUT OF PLANE CHORDS NOT SHOWN FOR CLARITY)



HIGHWAY SAFETY CORP.
GLASTONBURY, CT

TRI-CHORD SIGN STRUCTURE
I-89 EXIT 12 SB OFF RAMP
CHITTENDEN COUNTY, VERMONT
PROJECT No. IM 089-2(35)

DRAWN: MHM
CHECKED: [Signature]
DATE: 7/8/05
SCALE: N.T.S.
HSC REFERENCE NO.: 1515

GENERAL CONTRACTOR: [Blank]
SUB CONTRACTOR: F.R. LAFAYETTE
SIZE: D REVISION: 0
SHEET NO.: 1 of 8

REVISIONS		
No.	Remarks	Date
0	Initial submittal	7-19-05

F.R. Lafayette