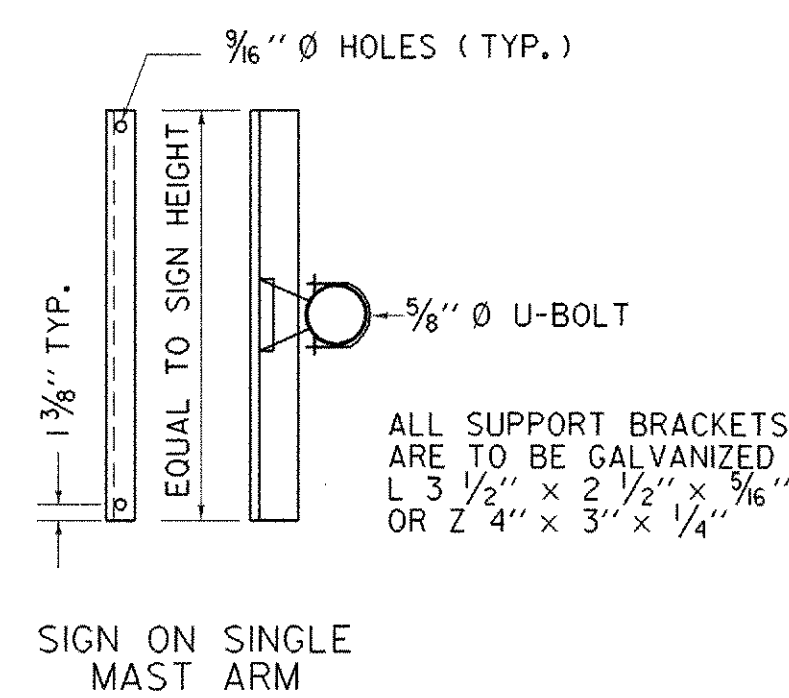


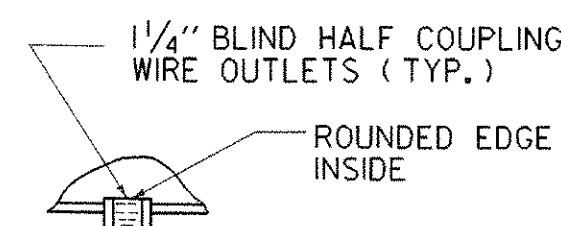
SIGN BRIDGE OPTIONS

NOTES:

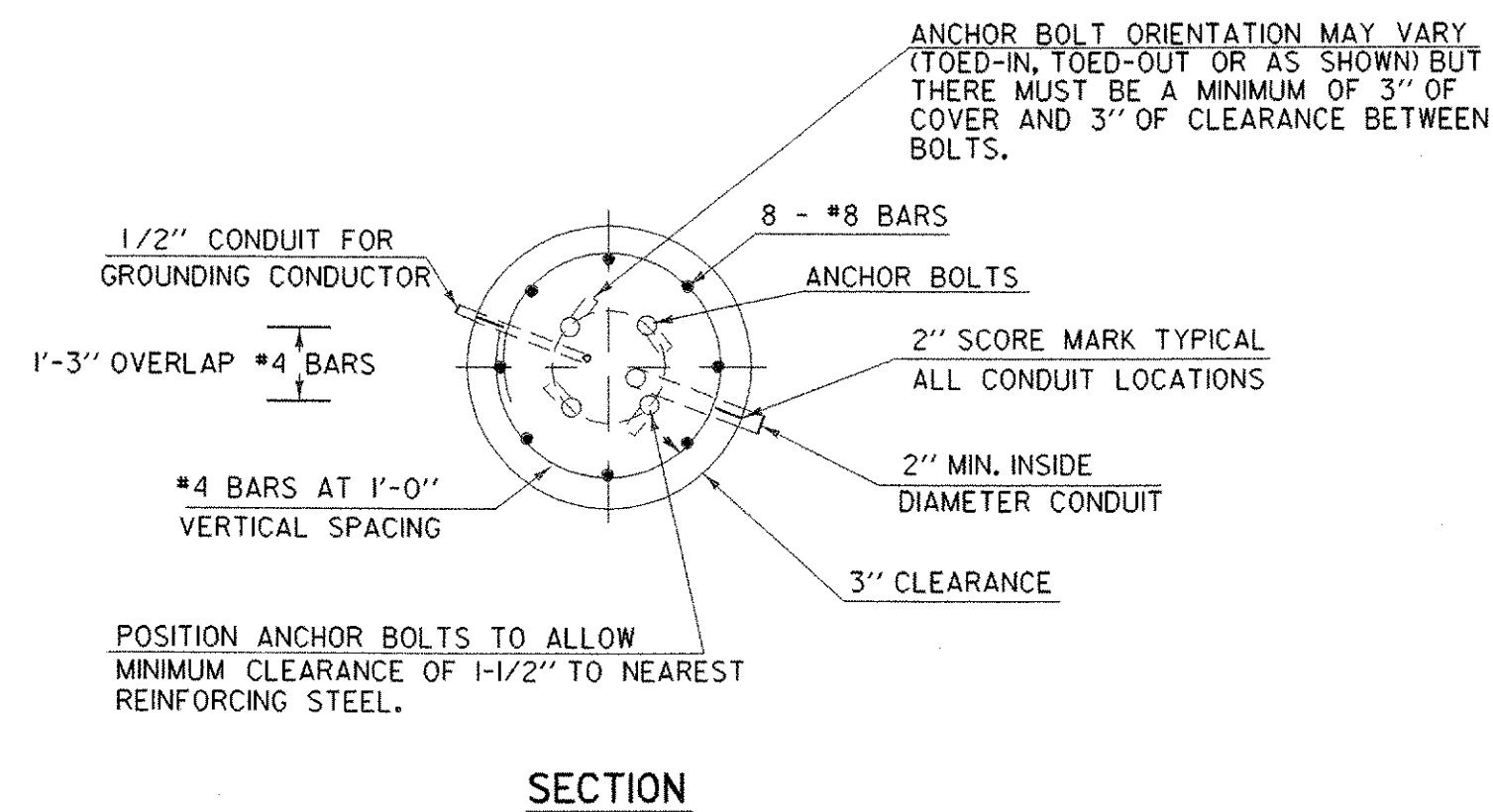
1. MANUFACTURER TO DETERMINE TYPE OF STRUCTURE REQUIRED.
2. MONOTUBES SHALL NOT BE USED FOR SIGNS OVER 10' IN HEIGHT.
3. MINIMUM CLEARANCE FROM SIGNS TO ROADWAY IS 17'.



SIGN BRACKET DETAILS

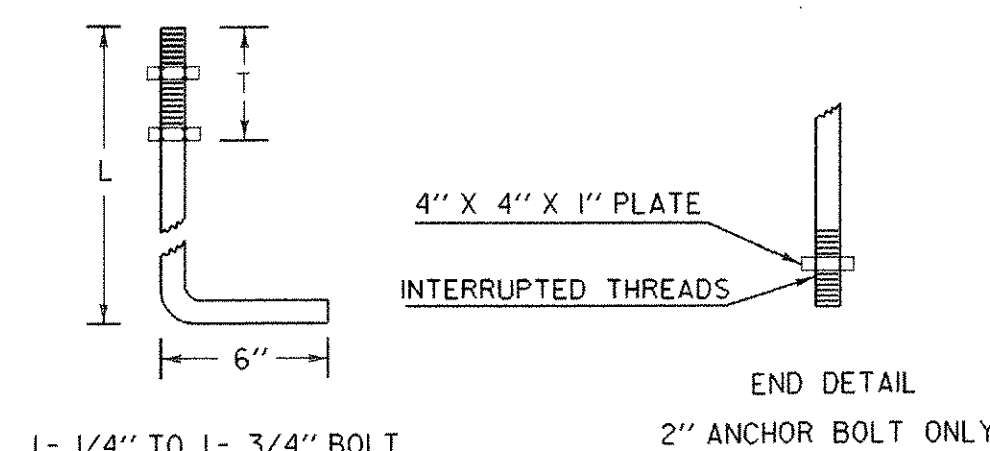


DETAIL A

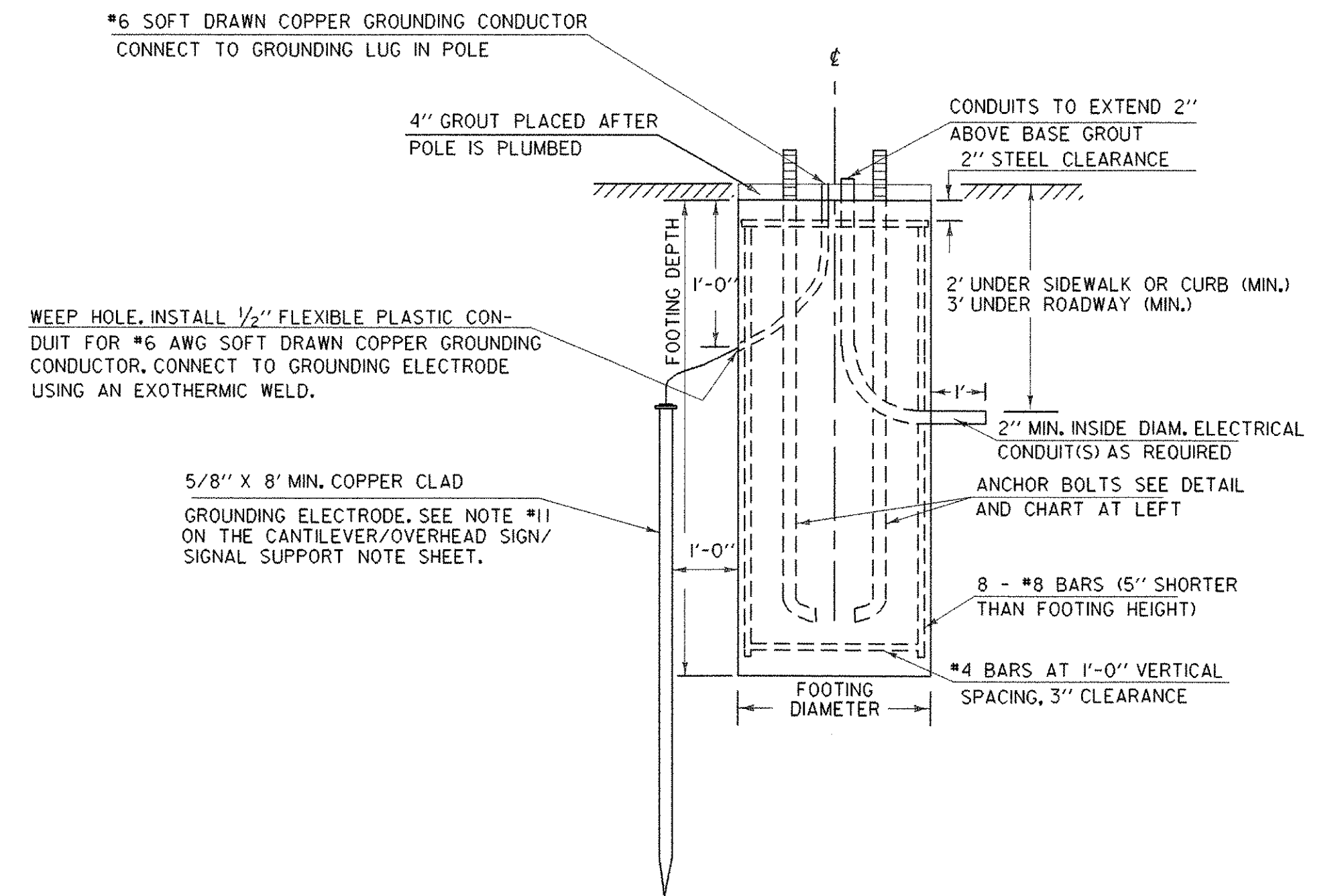


OVERHEAD TRAFFIC SIGN BRIDGE FOOTING DETAIL
(SPREAD FOOTINGS OR PILES ARE OPTIONAL)

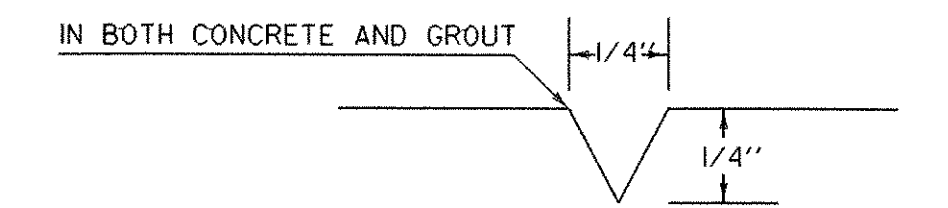
ANCHOR BOLT DETAIL		
SIZE	L (IN)	T (IN)
1- 1/4" X 48"	42	8
1- 1/2" X 60"	54	9
1- 3/4" X 90"	84	9
2" X 96"	96	9



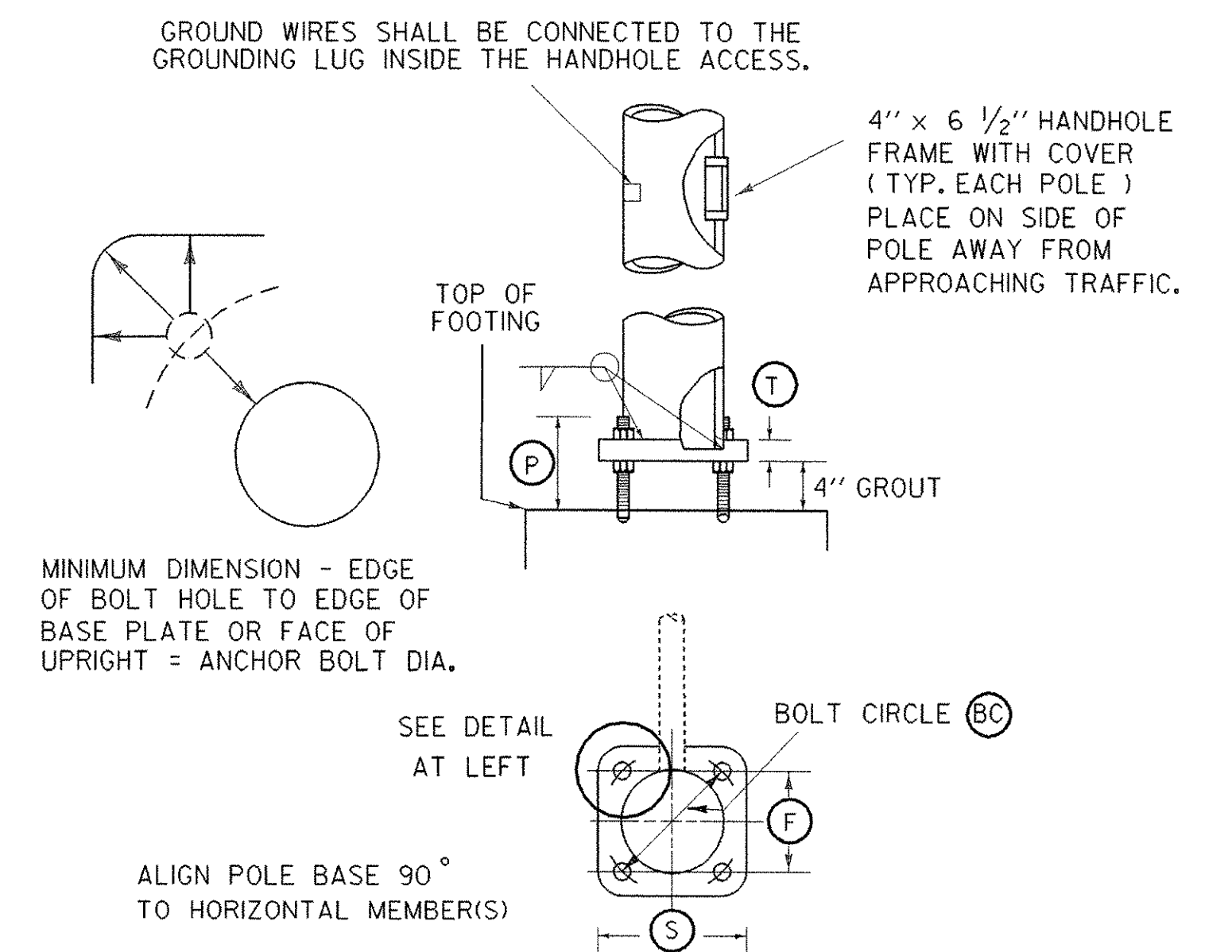
ANCHOR BOLT DETAIL



ELEVATION



2" SCORE MARK DETAIL



POLE BASE AND BASE PLATE DETAIL

PROJECT NAME: I-89 EXIT 12 SB OFF RAMP
PROJECT NUMBER: IM 089-2(35)

FILE NAME: 618800F4DT02.dgn PLOT DATE: 17-MAY-2005
PROJECT LEADER: EPD DRAWN BY: JDA / PGJ
DESIGNED BY: JDA CHECKED BY: EPD
SIGN BRIDGE DETAILS SHEET 66 OF 76